



Syrian Crisis, Urgent Call

Flash Report on Camps Situation in Idlib Governorate

Northern Syria

04 OCTOBER 2014



وحدة تنسيق الدعم
ASSISTANCE COORDINATION UNIT

The protracted crisis in Syria has caused mass internal displacement of populations throughout the country. In Northern Syria, large numbers of internally displaced persons (IDPs) have been forced to leave their area of origin due to intensification of the conflict. IDPs from Hama have mainly settled in camps and informal settlements located close to the border with Turkey.

Through its network of key informants and field coordinators, ACU Information Management Unit (IMU) received alerts about new waves of displacements from rural Hama towards Idlib camp clusters. Some of displaced families have been settled down in 3 IDP's camp clusters, where they have been hosted by original IDPs in those camps, where other families are still without shelter.

It should be noted that the higher ratio of displaced families from rural Hama spend their nights in the open in unstable gatherings spread all over the road from the source of displacement to camps, that's why IMU unit couldn't specify the real numbers of displaced families.

ACU has called for support on 23rd of September 2014 to all humanitarian working organizations to present the required assistance.

2035 HOUSEHOLDS DISPLACED WITHIN IDLIB SINCE 13TH OF SEPTEMBER

300 DISPLACED FAMILIES ARE STAYING IN THE OPEN AIR WITH NO SHELTER

Until the moment of release of this report, IMU field coordinators did not record any single response towards this displacement wave, especially in shelter sector. Aggravation of humanitarian situation inside camps, which were already suffering from dire humanitarian conditions, was the inevitable result after new displacements.

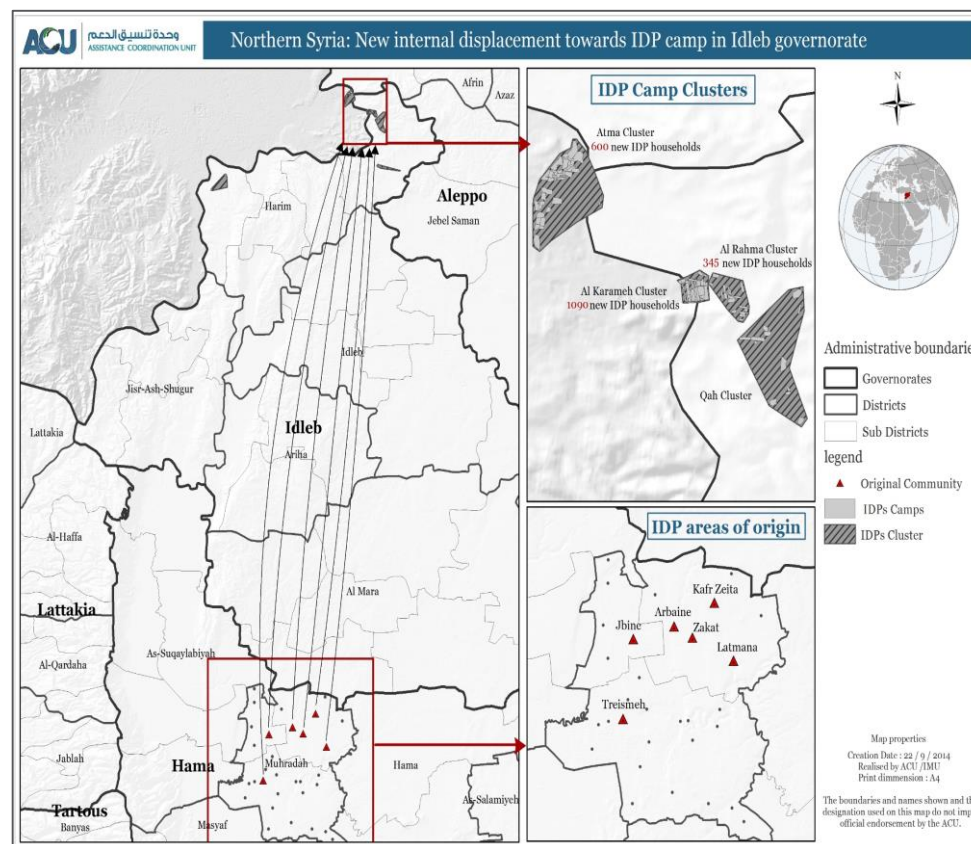
This Red Flag Report is released to rapidly share initial data with aid actors supporting the response for populations affected by the crisis in Syria. ACU-IMU will share updated information as more data is collected and processed.

This new displacement wave has increased IDPs suffering and added additional burden on the limited essential resources. The general situation of all camps is bad in all sectors (food security, health, WASH, and shelter). Food need still form the first priority for 84% of IDPs, health care is still below appropriate level, deceases are spread due to lack and sometimes unavailability of medical points and health services in some clusters. Shelter sector also needs

support, where 50% of tents have to be replaced or maintained as soon as possible. Many camps suffer from severe shortage in health facilities and could not reach minimum level of humanitarian standards.

In spite of aggravation of the humanitarian situation inside camps, humanitarian organizations have stopped providing their support and meet the essential needs of the IDPs. In addition to the withdrawal of many of the organizations working in the camps, after IDPs protests against them due to their failure in fulfilling their mission to provide shelter as an urgent need and first priority in these circumstances.

ACU IS CALLING FOR SUPPORT IN ORDER TO ASSIST NEWLY DISPLACED SYRIAN FAMILIES IN IDLIB AND PROVIDE SHELTER AND HUMANITARIAN NEEDS AS SOON AS POSSIBLE



For more information: imu@acu-sy.org / mohamad.a@acu-sy.org / +90 342 220 10-77/88/99 / www.acu-sy.org