

Syrian Crisis

Flash Report on new displacements

Northern Syria

23 SEPTEMBER 2014

The protracted crisis in Syria has caused mass internal displacement of populations throughout the country. In Northern Syria, large numbers of internally displaced persons (IDPs) throughout Hama governorate¹ have been forced to leave their area of origin due to intensification of the conflict. IDPs from Hama have mainly settled in camps and informal settlements located close to the border with Turkey.

Through its network of key informants and field coordinators, ACU Information Management Unit (IMU) received alerts about new waves of displacements from Hama governorate towards Idlib camp clusters. ACU-IMU is currently gathering more information about the situation.

This Red Flag Report is released to rapidly share initial data with aid actors supporting the response for populations affected by the crisis in Syria. ACU-IMU will share updated information as more data is collected and processed.

2035 HOUSEHOLDS DISPLACED WITHIN IDLIB SINCE 13TH OF SEPTEMBER

300 DISPLACED FAMILIES ARE STAYING IN THE OPEN AIR WITH NO SHELTER

¹ For more information about IDP movement refer to (IMU Dynamic Monitoring Report) [DYNAMO 3](#)



وحدة تنسيق الدعم
ASSISTANCE COORDINATION UNIT

Between the 13th and 15th September, a reported 500 Syrian households left their place of origin in the area of Rural Hama. More specifically these IDPs are originating from: the following six villages: Kafer zieta, Zakat, Altreemseh, Alarbaeen, Aljabeen, and mainly from Lataminnah. By 21st September, this number increased over four times.

The majority of newly displaced households have settled in 3 IDP camp clusters (see table and map below) where they are being hosted by family relatives. However, a small proportion of IDPs had no alternative than staying in open-air sites.

IDP CAMP CLUSTERS	ATMA	ALKARAMEH	ALRAHMA	TOTAL
# DISPLACED HOUSEHOLDS	600	1090	345	2035

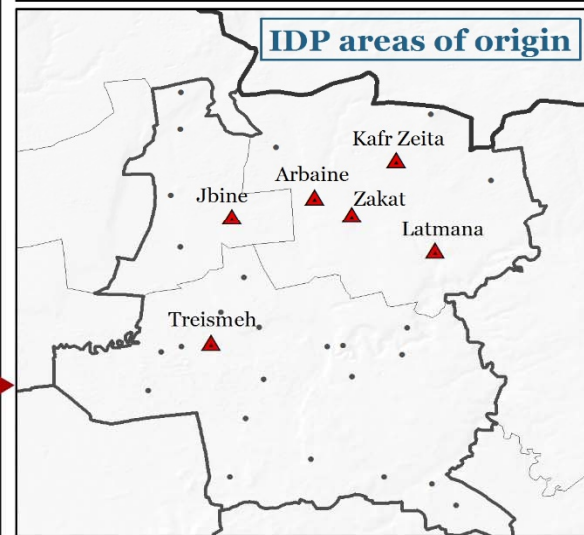
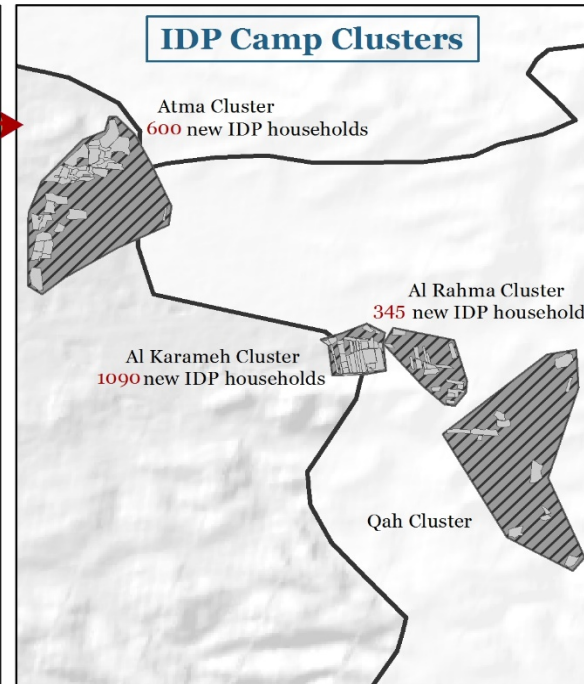
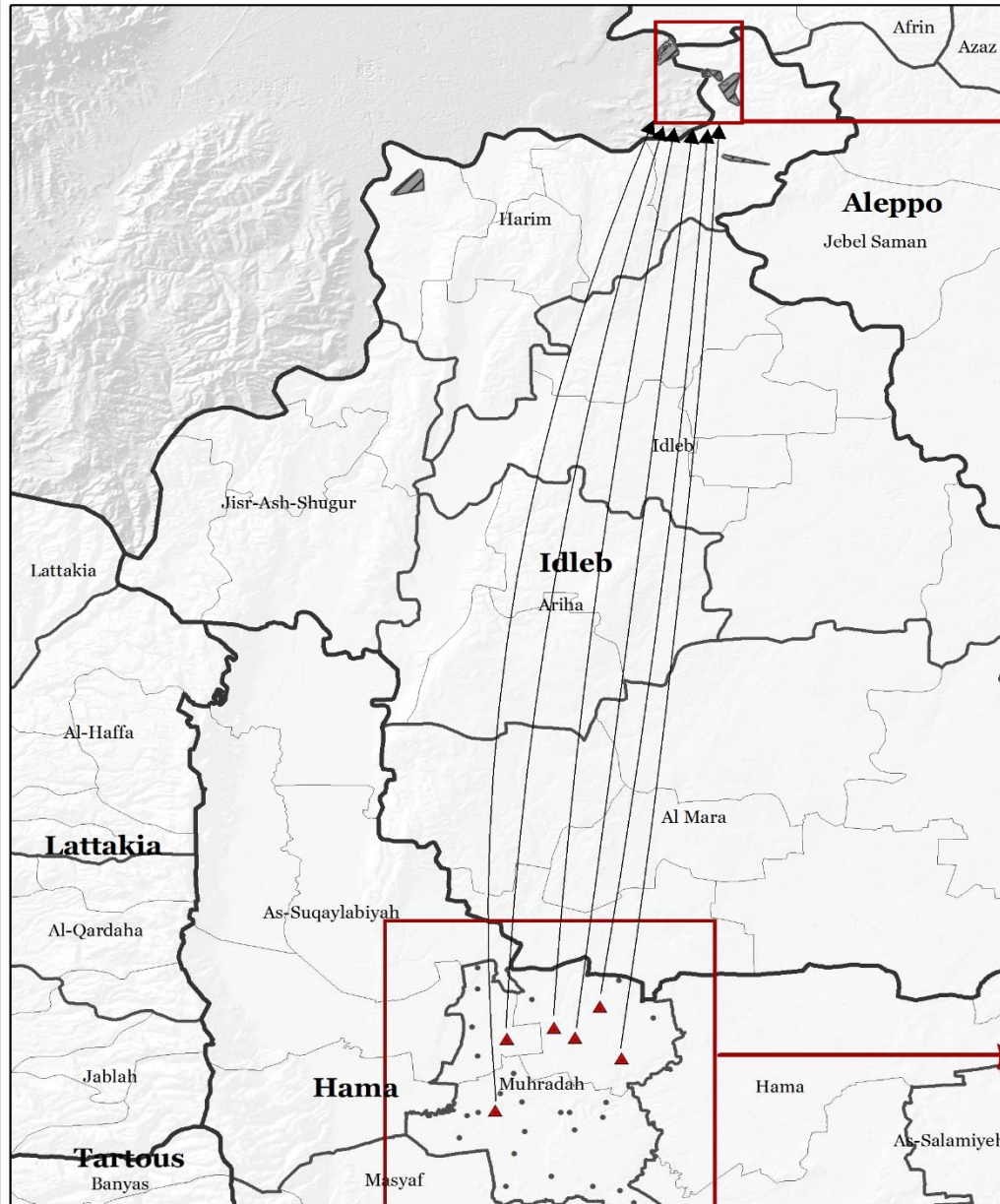
As of 21st September, 760 tents have been distributed by ACU and other aid actors, but this is insufficient to cover the shelter needs of IDP families. Further, assistance is also needed to cover other humanitarian needs such as food, health and water.

ACU IS CALLING FOR SUPPORT IN ORDER TO ASSIST NEWLY DISPLACED SYRIAN FAMILIES IN IDLIB

For more information: imu@acu-sy.org / mohamad.a@acu-sy.org / +90 342 220 10-77/88/99 / www.acu-sy.org



Northern Syria: New internal displacement towards IDP camp in Idlib governorate



Administrative boundaries

- Governorates
- Districts
- Sub Districts

legend

- Original Community
- IDPs Camps
- IDPs Cluster

Map properties

Creation Date : 22 / 9 / 2014
 Realised by ACU / IMU
 Print dimension : A4

The boundaries and names shown and the designation used on this map do not imply official endorsement by the ACU.