

Oct, 2021

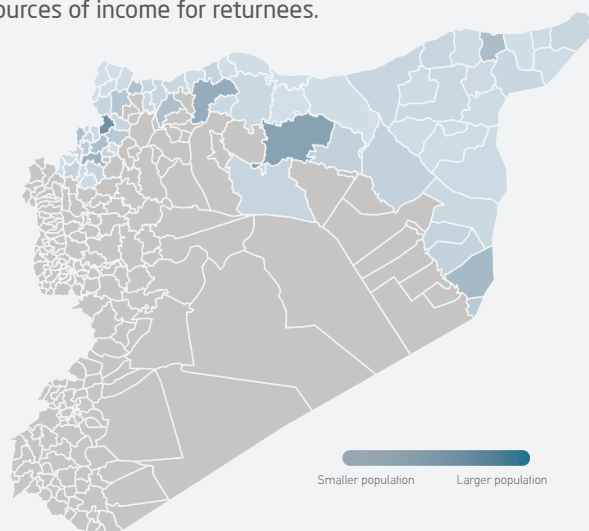
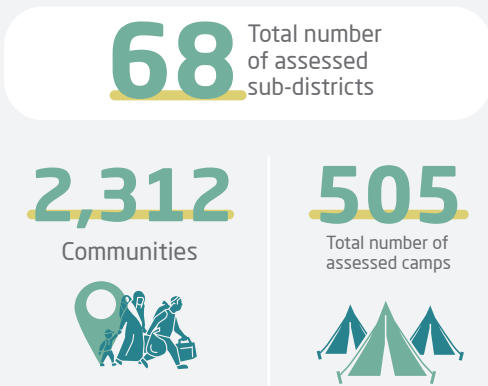
Study of Population Displacement & Return Movements

INTRODUCTION

Despite the deteriorating conditions in Syria, some refugees and IDPs return to their original places. This infographic presents information on these populations in areas outside the regime control. ACU's enumerators constantly track these populations, along with movements of displacement and return.

This study presents the total number of populations and gender ratio, the total number of old and new IDPs and their types of shelters, the number of those who left and the reasons for leaving, and the number of returnees last month with their most critical needs.

The study also presents information on local councils in the return areas last month, availability and evaluation of basic services, decision-makers and primary service providers, and sources of income for returnees.



TOTAL STATISTICS



TOP DISTRICTS WITH THE LARGEST NUMBER OF IDPS



GENDER



DEPARTURES

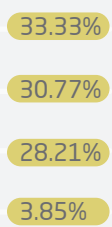
9,247
TOTAL NUMBER OF DEPARTURES



Reasons for Departing

- 1 Accessibility of services is limited
- 2 Looking for job opportunities
- 3 Accessibility of assistance is limited
- 4 Shelling and clashes

Camps



SHELTER TYPES FOR IDPs



SERVICES

