

November, 2021

## IDP's Camps Monitoring Study

The IDPs camps monitoring interactive study includes information about the situation of IDPs in northern Syria camps, with regard to sources of income, the sectors of Health, WASH, Nutrition, Education, Shelter, in addition to some demographic information.

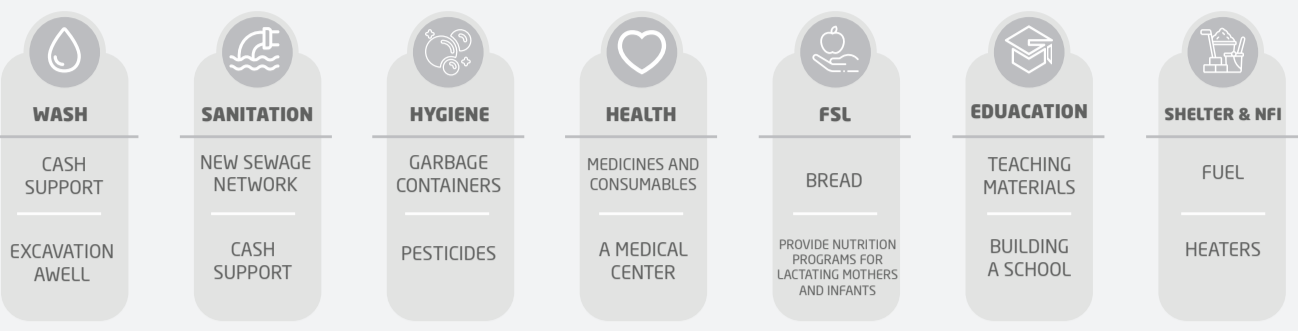
Individuals per cluster

**812,006**

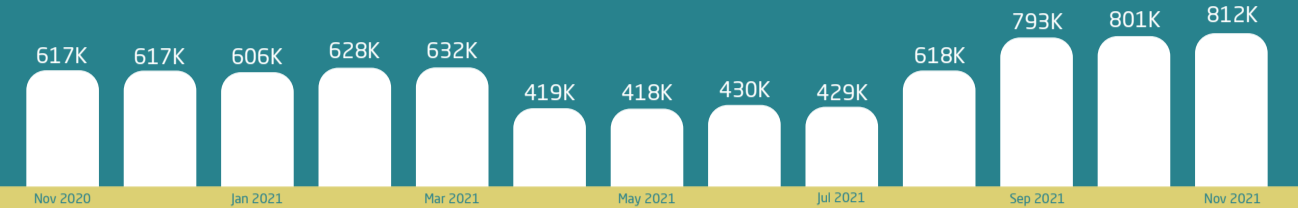
Camps per cluster

**587**

### Camps Priorities for The Month of November 2021



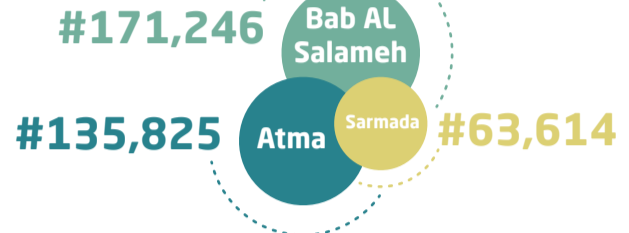
### Population Census for the past 12 Months



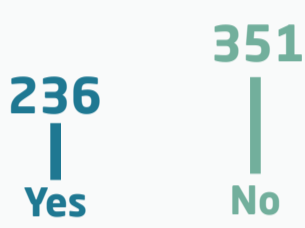
### Population by Gender



### Population by Region



Do IDPs pay fees to live in the camp?



892

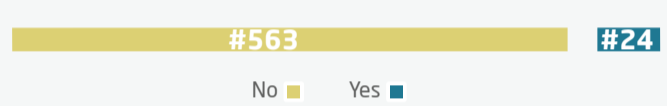
Families left without shelter in the assessed camp

### Health

Medical staff in the camps



Is there a medical point inside the camp?



Assessing health services during the past month



Diseases by month

409 Acute diarrhea

124 Leishmaniasis

2,052 Chronic respiratory diseases

1,534 Hypertension

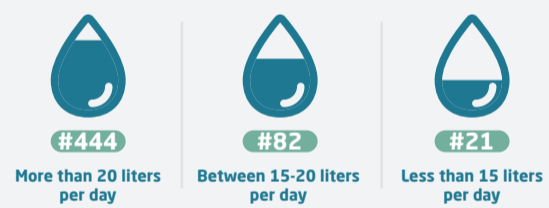
2,531 Diabetes

### WASH

The mechanisms of water delivery



The average share of drinking water



The sewage system in tents, caravans, and build rooms



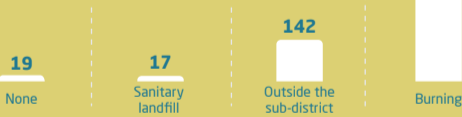
Water sterilization



Regular Garbage Removal



Disposal mechanism of domestic waste after removal its transport outside the camp

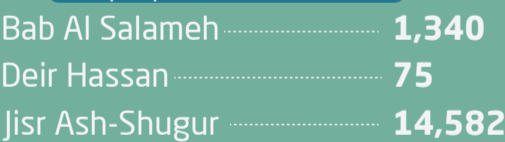


Reasons for public bathrooms' non-functionality

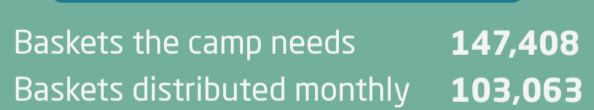


### FSL

People provided with meals



Need for food baskets vs. distributor



### Priorities



### Education

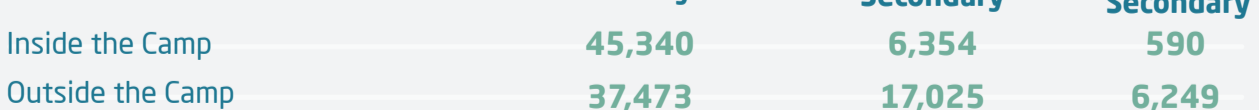
Teachers by Gender



Formal and volunteer teachers in camps



Students who attend schools



### Shelter & NFI

