

October, 2021

## IDPs Camps Monitoring Study - September, 2021

The IDPs camps monitoring interactive study includes information about the situation of IDPs in northern Syria camps, with regard to sources of income, the sectors of Health, WASH, Nutrition, Education, Shelter, in addition to some demographic information.

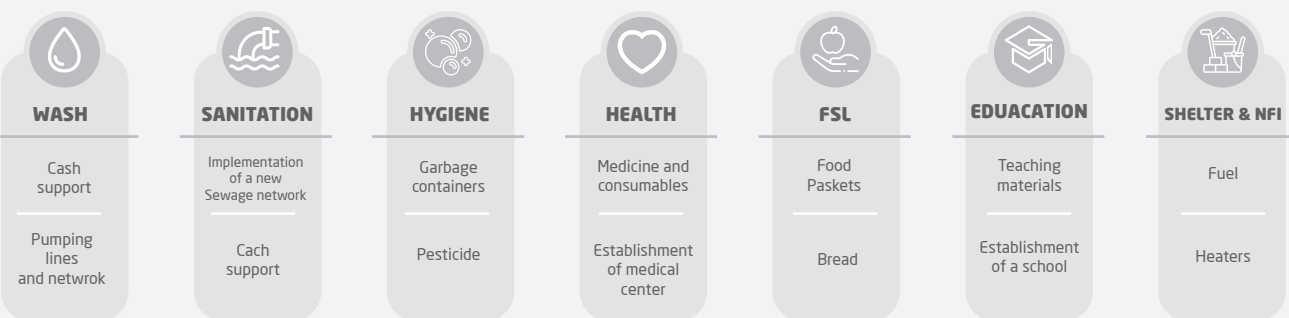
Individuals per cluster

**800,565**

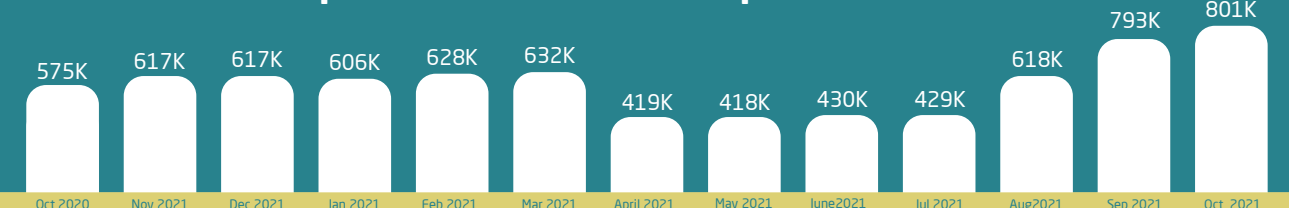
Camps per cluster

**575**

### 2021 camps priorities for the month of October



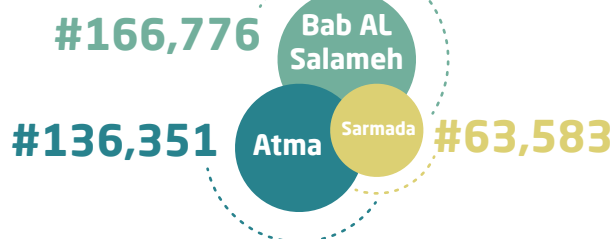
### Population census for the past 12 months



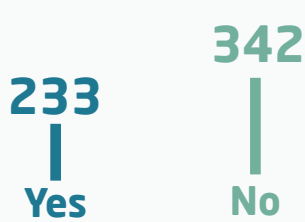
### Population by gender



### Population by region



### Do IDPs pay fees to live in the camp?



**943**

Families left without shelter in the assessed camp

## Health

### Medical staff in the camps

**38**

Midwives

**139**

Nurses

**104**

Doctors

### Is there a medical point inside the camp?

#551

No

#24

Yes

### Assessing health services during the past month

**4%**

Good

**67%**

Average

**29%**

Bad

### Diseases by month

**371**

Acute diarrhea

**149**

Leishmaniasis

**2,110**

Chronic respiratory diseases

**1,609**

Hypertension

**2,687**

Diabetes

## WASH

### Mechanisms of water delivery



Tankers

**115,874**



Water network

**44,170**

### Average share of drinking water



#431

More than 20 liters per day



#77

15 - 20 liters per day

### Water sterilization

Yes #487

NO #88

The sewage system in tents, caravans, and built rooms

**66,519**

Regular sewage system

**78,418**

Cesspools

**15,153**

None/ Out in the open

### Regular garbage removal



Yes #532

No #43

### Disposal mechanism of domestic waste after removal outside the camp

**19**

None

**17**

Sanitary landfill

**121**

Outside the sub-district

**418**

Burning

### Reasons for public bathrooms' non-functionality

#562

Cabin was damaged

#325

Failures in pipelines

#139

Failures in watertaps

#109

Water not available

#85

Waste accumulation

## FSL

### People provided with meals

Bab Al Salameh: 1,340

Deir Hassan: 475

Qah: 83

### Food baskets needed vs. distributed

Baskets the camp needs: 148,302

Baskets distributed monthly: 96,231

### Priorities

Cooking equipment

Cooking fuel

Nutrition programs for lactating mothers and infants

Bread

Food baskets

## Education

### Teachers by gender

Female **56%**

Male **44%**

### Formal and volunteer teachers in camps

Formal teachers: #2,050

Volunteer teachers: #276

### Students who attend schools

	Primary	Lower Secondary	Upper Secondary
Inside the camp	44,818	3,970	223
Outside the camp	34,778	16,942	5,744

## Shelter & NFI

Tents that need rain insulators (tarps): **31,652**

Tents that need ground insulators: **23,559**

Tents that need replacement: **8,917**

**51,241** Built rooms

**9,471** Caravans

**99,341** Tents

