

IDP CAMP MONITORING REPORT NORTHERN SYRIA

Data Covers
October 2014
Issue No.15



PREPARED BY
THE INFORMATION MANAGEMENT UNIT (IMU)
OF THE ASSISTANCE COORDINATION UNIT (ACU)



THE REPORT COVERS:

POPULATION

HUMANITARIAN SITUATION

FOOD SECURITY

HEALTH

WASH

EDUCATION

SHELTER AND NFIS

PRIORITIES

HUMANITARIAN ACTORS

ANNEXES

CLUSTER LOCATIONS AND CODES

LIST OF CAMPS

CAMP MAPS

CONTENTS

CONTENTS.....	1
SUMMARY.....	2
LIST OF ACRONYMS AND ABBREVIATIONS	3
LIST OF TABLES AND FIGURES	3
INTRODUCTION	4
METHODOLOGY.....	4
ASSESSMENT SAMPLE.....	4
ASSESSMENT TOOLS	4
DATA COLLECTION	5
DATA MANAGEMENT AND ANALYSIS	5
POPULATION.....	5
HUMANITARIAN SITUATION	6
FOOD SECURITY	6
HEALTH.....	7
WATER AND SANITATION AND HYGIENE (WASH).....	8
EDUCATION.....	10
SHELTER AND NON FOOD ITEMS (NFIS).....	10
PRIORITIES.....	12
HUMANITARIAN ACTORS.....	13
ANNEX I.....	13
ANNEX II.....	14
ANNEX III.....	17

The **Information Management Unit (IMU)** aims to strengthen the decision-making capacity of aid actors responding to the Syrian crisis by collecting, processing, and sharing information about the humanitarian situation in Syria. For this purpose, the IMU has a wide network of enumerators who have been recruited depending on specific criteria such as their level of education, the web of their social relationships with different key sources of information, as well as their ability to work under pressure and to communicate in an efficient manner. IMU collects data which is difficult to access by international aid actors, and it releases different types of information outputs including maps, daily situation reports, flash reports on specific issues, camp monitoring reports, monthly reports (food-price index), and thematic reports.

For more information and to access to IMU products, please visit: www.acu-sy.org. You can also write to us directly at: imu@acu-sy.org and call us on: +90-342-22-010/77/88/99.

SUMMARY

Assistance Coordination Unit (ACU) launched the 15th edition of its monthly IDP camp monitoring report. The report was prepared to assess the IDPs living conditions in camps during October 2014.

Most of the camps went through difficult situations during October due to heavy rains at the beginning of this month. Because of the lack of infrastructure, drainage systems and road gravelling a lot of tents were drowned, and the streets were flooded. Moving around between the tents was almost impossible. IDPs lost many of their possessions along with the tent furniture. It is very important to think of the structure of these random camps and work seriously to come up with a drastic solution for the problem of drainage systems especially during winter.

The huge influx in the northern countryside of Hama led to changing the status of 9 camps from unstable into stable in addition to the forming of three new camps (two camps in Al Karama Cluster and another one in Al Rahma Cluster). The IDP number went up with (9% - 10,719 IDPs) reaching a total of 129,009 IDPs.

However, the IDP number in Jarabulus camps is still going down since a lot of IDPs there are moving into Turkey.

A total of 133 camps in 10 camp clusters were assessed during October 2014. Data collection was carried out through IMU's network of 22 enumerators and funded by ACU. Key findings presented in further details in this report include:

During this month there was a significant reduction in food aids going into camps, especially in Atma camps. Furthermore, many bakeries serving camps suffered from flour shortages.

The health situation in camps is still the same without achieving any progress. ACU's Health Department conducted an assessment of the health situation in order to inform a proper response.

Despite the slight improvement in the education sector and the entrance of some aids, the majority of school-aged children are still out of schools.

The low number of toilets and showers is still one of the main problems in WASH sector, and with the advent of winter it forms a real problem for IDPs.

Due to heavy rains at the beginning of winter, there is a critical need of heaters, plastic sheets to protect tents and possessions, as well as of other winterization needs.

FIGURE 1, CLUSTERS AND NUMBER OF CAMPS

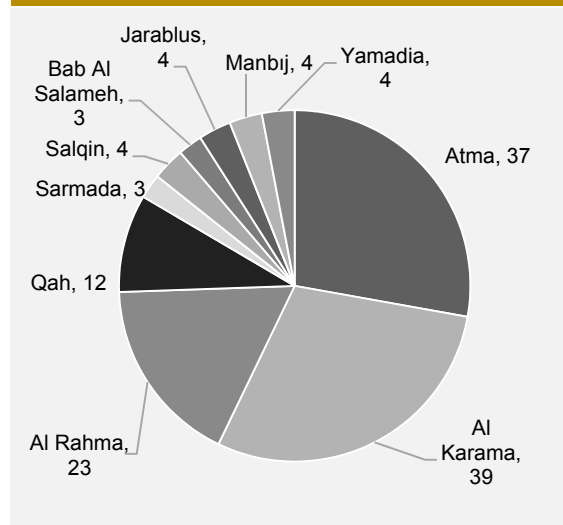


TABLE 1, STATUS OF CAMPS AND ABILITY TO COLLECT DATA

Status	Ability to Collect Data	Atma	Al Karama	Al Rahma	Qah	Sarmada	Salqin	Bab Al Salameh	Jarabulus	Manbij	Yamadia	Grand Total
Functional	Yes	36	38	22	12	3	3	1	4		1	120
	No						1	2		4		7
Unstable	Yes	1	1	1							3	6
	No											
Grand Total		37	39	23	12	3	4	3	4	4	4	133

LIST OF ACRONYMS AND ABBREVIATIONS

ACU	Assistance Coordination Unit
GIS	Geographic Information System
HC	Host Communities
IDP	Internally Displaced Person
IMU	Information Management Unit
INGO	International Non-Governmental Organization
KI	Key Informant
LC	Local Council
LNGO	Local Non-Governmental Organization
MT	Metric Ton
NFI	Non-Food Item
NGO	Non-governmental Organization
OCHA	Office for the Coordination of Humanitarian Affairs
RC	Relief Council
SARC	Syrian Arab Red Crescent
SBF	Syrian Business Forum
SHARP	Syrian Arab Republic Humanitarian Assistance Response Plan
UN	United Nations
UNHCR	United Nations High Commissioner for Refugees
UNICEF	United Nations Children's Fund
WFP	World Food Program
CCCM	Camp Coordination and Camp Management

LIST OF TABLES AND FIGURES

TABLE 1, STATUS OF CAMPS AND ABILITY TO COLLECT DATA.....	2
TABLE 2, POPULATION IN CAMP CLUSTERS IN OCTOBER 2014	6
TABLE 3, VULNERABLE POPULATION IN CAMP CLUSTERS IN OCTOBER 2014	6
TABLE 4, DOCTORS AND MEDICAL POINTS.	7
TABLE 5, BIRTHS AND DEATHS IN CAMP CLUSTERS IN OCTOBER 2014.....	7
TABLE 6, DAILY WATER SITUATION IN CAMP CLUSTERS DURING OCTOBER 2014	8
TABLE 7, WATER POINT NUMBERS IN CAMP CLUSTERS IN OCTOBER 2014	8
TABLE 8, NUMBER OF SHOWERS IN CAMP CLUSTERS IN OCTOBER 2014	9
TABLE 9, NUMBER OF TOILETS IN CAMP CLUSTERS IN OCTOBER 2014.....	9
TABLE 10, NUMBER OF GARBAGE BINS IN CAMP CLUSTERS IN OCTOBER 2014.....	9
TABLE 11, NUMBER OF SCHOOLS IN CAMP CLUSTERS IN OCTOBER 2014	10
TABLE 12, FIRST PRIORITIES FOR IDPS IN THE CAMPS IN OCTOBER 2014	12
TABLE 13, SECOND PRIORITIES FOR IDPS IN THE CAMPS IN OCTOBER 2014	12
TABLE 14, THIRD PRIORITIES FOR IDPS IN THE CAMPS IN OCTOBER 2014.....	12
TABLE 15, CLUSTER INFORMATION IN OCTOBER 2014.....	13
TABLE 16, CLUSTER AND CAMP NAMES AND INFORMATION IN OCTOBER 2014	14
FIGURE 1, CLUSTERS AND NUMBER OF CAMPS.....	2
FIGURE 2, POPULATION DEMOGRAPHY IN CAMPS FROM AUGUST 2013 TO OCTOBER 2014	5
FIGURE 3, FOOD PRIORITIES FOR IDPS IN ALL CAMP CLUSTERS DURING OCTOBER 2014	7
FIGURE 4, HEALTH PRIORITIES IN CAMP CLUSTERS IN OCTOBER 2014	8
FIGURE 5, WASH PRIORITIES IN CAMP CLUSTERS IN OCTOBER 2014	9
FIGURE 6, EDUCATION PRIORITIES FOR CAMP CLUSTERS IN OCTOBER 2014	10
FIGURE 7, SHELTER PRIORITIES IN CAMP CLUSTERS IN OCTOBER 2014	11
FIGURE 8, NFI PRIORITIES FOR CAMP CLUSTERS IN OCTOBER 2014.....	11
FIGURE 9, HUMANITARIAN ASSISTANCE ACTORS IN CAMP CLUSTERS IN OCTOBER 2014.....	13

INTRODUCTION

One of ACU's main mandates is to coordinate humanitarian aid for affected IDPs in northern Syria camps. This duty involves providing accurate information in certain periods about the humanitarian situation in those camps, especially in the environments where security issues limit the access to information. Therefore, the 15th edition of the camp monitoring monthly report is released; it presents an assessment about the living conditions inside one hundred thirty-three camps in ten different camp clusters in northern Syria.

This report keeps the donors, neighbouring country governments, and other humanitarian agencies up to date with actual changes during October 2014.

The report's first objective is to provide decision makers with comprehensive and operational information about IDP camps, in order to get the best responses about the dynamic situation of those camps, and to setup a continuous monitoring system to evaluate the effects of these responses on the living standards of the IDPs in those camps. Secondly, the report aims to support the coordination among all relevant humanitarian agencies including communities, international NGOs and the UN that play a role in responding to the Syrian crisis and to promote accountability across them.

This report is divided into four main parts:

The first part shows the population demography, and thus clarifies the impacts of war on IDPs.

The humanitarian situation analysis is covered in the second part showing the food situation, health services, water and sanitation, education, shelter and NFIs.

The third part tackles "need priorities" in camps assessing the needs, analysing them, then classifying them into first, second and third priority ranks.

The fourth part is assigned to talk about humanitarian actors who play a big role in providing humanitarian aid to all camps.

Annexes II and I include tables with details of camps in each cluster, number of families, and number of persons in each camp.

Annex III includes detailed maps for the geographical sites of most camps in northern Syria, where the IMU's enumerators traced the boundaries of these camps in order to install the geographical locations of these camps to facilitate the work of humanitarian organizations interested in aid delivery to those IDP camps.

METHODOLOGY

This section provides an overview of the methodology used for the assessment. The overall approach combines quantitative and qualitative methods. The assessment includes: 1) key informant interviews with people in charge of the camps, 2) direct field observations and sample testing done by enumerators, and 3) review of registration data available at camp management offices. Population information was gathered tent by tent. High priority needs of the IDPs were evaluated via live group meetings and observations with camp residents.

ASSESSMENT SAMPLE

This report covered 133 camps in northern Syria grouped within 10 clusters in three governorates (Aleppo, Idleb, and Lattakia).

ASSESSMENT TOOLS

The tools used in this assessment include a questionnaire designed depending on a questionnaire certified by OCHA.

The questionnaire was conducted by enumerators through key informant interviews with IDPs and camp managers.

DATA COLLECTION

The data collection phase started on October 20th, 2014 and was completed within 10 days. Data collection was carried out through IMU’s network of enumerators based at camps in northern Syria. In total, 22 enumerators, who are residents in the camps, contributed to this assessment. These enumerators have been recruited by IMU based on specific criteria such as their level of education, the web of their social relationships, notably with local community, camp managers and other key sources of information, as well as their ability to work under pressure and to communicate in an efficient manner.

Enumerators selected by IMU have an extensive knowledge of the camps where they are based. For instance, they were quickly able to get the contact information of each camp manager in the cluster, observe all details and monitor the conditions of IDPs.

DATA MANAGEMENT AND ANALYSIS

IMU Data Management Officer received the collected data on paper and proceeded with data entry, using excel sheets.

Upon consolidation of the collected data, IMU data analysis team proceeded with data visualization by identifying the required tables, graphs, and maps; which will feed into the analysis of assessment findings. Data visualization was conducted using MS Excel program. IMU GIS officer produced the maps using Arc GIS software. As for the frontiers of the camps, ACU’s enumerators worked hard to trace them, and they keep updating any related information.

POPULATION

There was a clear increase in the total IDP number in camps reaching (129,009 IDPs) i.e. a (9%) increase due to the intensified battles in the northern countryside of Hama. The huge influx from the northern countryside of Hama to the camp clusters of Atma, Al Karama and Al Rahma led to changing the status of 9 camps from unstable into stable in addition to the forming of three new camps (two in Al Karama Cluster, and one Al Rahma Cluster). The IDP number went up with (9% - 10,719 IDPs) reaching a total of 129,009 IDPs.

However, the IDP number in Jarablus camps is still going down since a lot of IDPs there are moving into Turkey.

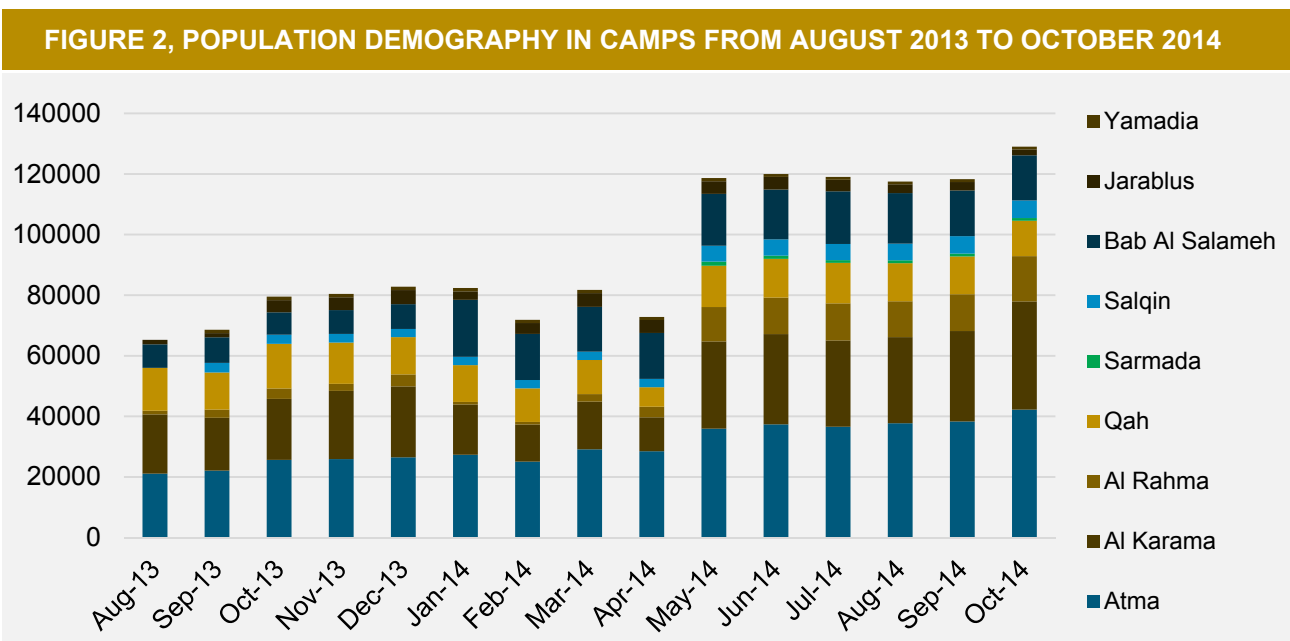


TABLE 2, POPULATION IN CAMP CLUSTERS IN OCTOBER 2014

Status	Atma	Al Karama	Al Rahma	Qah	Sarmada	Salqin	Bab Al Salameh	Jarablus	Yamadia	Grand Total
# of Families	6,381	6,143	2,639	2,172	172	1,233	2,294	393	171	21,598
# of Individuals	42,247	35,678	14,972	11,684	856	5,812	14,894	1,965	900	129,008
# of Male	19,953	17,128	7,457	5,715	430	2,649	7,283	967	460	62,042
# of Female	22,294	18,550	7,515	5,969	426	3,163	7,611	998	440	66,966
# of 0 - 2 Years	5,852	4,564	1,683	1,152	87	756	2,190	271	186	16,741
# of 2 - 6 Years	4,806	4,673	2,056	1,517	73	820	1,606	245	0	15,796
# of 6 - 12 Years	6,465	6,269	2,560	1,913	138	1,163	2,856	363	172	21,899
# of 12 - 18 Years	6,341	6,006	2,504	1,956	130	773	2,605	296	230	20,841
# of 18 - 50 Years	15,257	11,863	5,397	4,473	347	2,038	4,740	718	213	45,046
# of >50 Years	3,526	2,303	770	673	81	262	897	72	99	8,683

The table below refers to people with disabilities inside the camps:

- A total of 815 IDPs suffer from disabilities (physical disability, mental disability, birth defect, disability due to injury).
- A total of 1,446 women inside camps are responsible for supporting their families financially.

The following table also gives the number of unaccompanied minors and elders.

TABLE 3, VULNERABLE POPULATION IN CAMP CLUSTERS IN OCTOBER 2014

Cluster	Atma	Al Karama	Al Rahma	Qah	Sarmada	Salqin	Bab Al Salameh	Jarablus	Yamadia	Grand Total
#of Disables	157	296	155	105	4	88	0	4	6	815
# of Female headed households	454	411	322	130	14	77	0	23	15	1,446
# of Unaccompanied minors	18	80	7	5	0	33	0	4	0	147
#of Unaccompanied elders	58	106	47	6	1	24	0	6	2	250

HUMANITARIAN SITUATION

This section presents the key findings from the assessment and are structured into two sub-sections. The first one covers the humanitarian situation analysis in the camps and provides updated information about five sectors: food security, health, WASH, education, shelter and NFIs. The second sub-section talks about the humanitarian assistance that had been provided to camps inside Syria during October 2014.

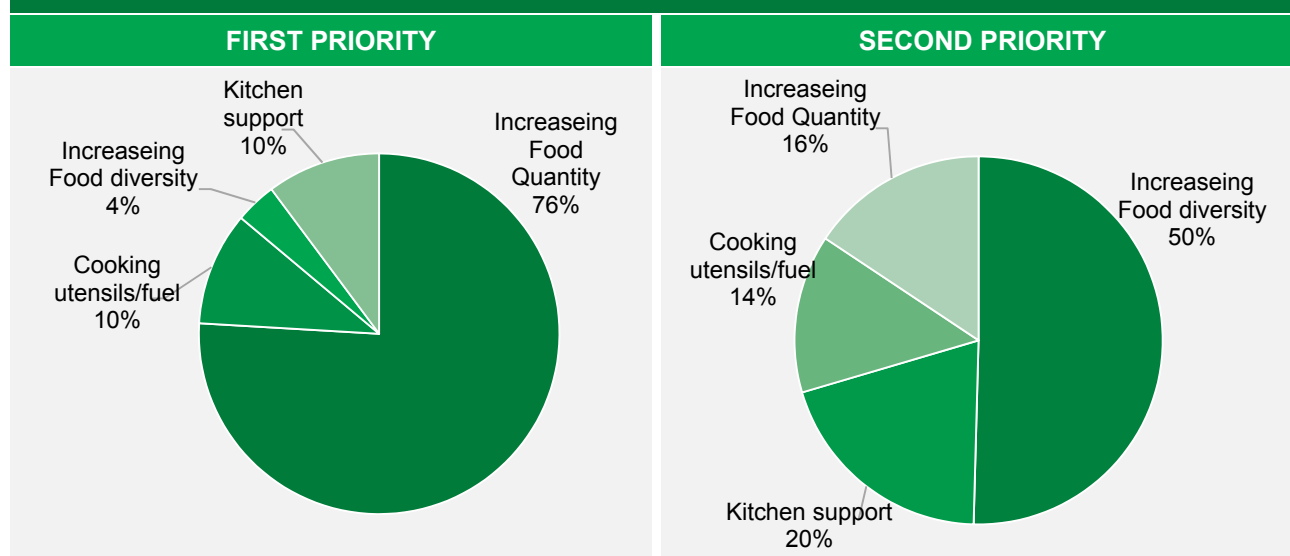


FOOD SECURITY

During this month there was a significant reduction in food aids going into camps, especially in Atma camps. Furthermore, many bakeries serving camps suffered from flour shortages.

Turning to bread situation, which is considered the main food item in Syria, some camps are still suffering from shortage of bread. Regarding Jarablus and Yamadia camps the situation did not change this month, these two camps are still suffering from complete absence of bread. The first priority was increasing food quantity for 76% while increasing food diversity was the second priority with 50%.

FIGURE 3, FOOD PRIORITIES FOR IDPS IN ALL CAMP CLUSTERS DURING OCTOBER 2014



HEALTH

ACU conducted an assessment about the health situation in IDP camps and their medical points. The most critical problems in the medical points were:

1. The shortage of medical staff
2. The shortage of some medicines especially those for lice, scabies and antidotes for the poisons of snakes and scorpions.
3. The shortage of medical laboratories and the available types of medical-lab tests.
4. The critical shortage of medical equipment such as radiographic, electrographic and echo equipment.
5. The shortage of ambulances to transfer patients from the medical points to hospitals.
6. Some doctors serve more than one medical point as in Al Nour Camp (Al Rahma Cluster), Al Midan and Al Forkan (Qah Cluster).

TABLE 4, DOCTORS AND MEDICAL POINTS

Cluster	Atma	Al Karama	Al Rahma	Qah	Sarmada	Salqin	Bab Al Salameh	Jarablus	Yamadia
# of Doctors	4	7	1	8	0	3	8	3	0
# of Medical points	3	2	1	6	0	2	2	1	1
Individuals/doctor	9,145	4,029	12,225	1,675		2,666	2,170	1,270	
Individuals/medical point	12,193	14,102	12,225	2,234		2,666	8,681	3,810	946

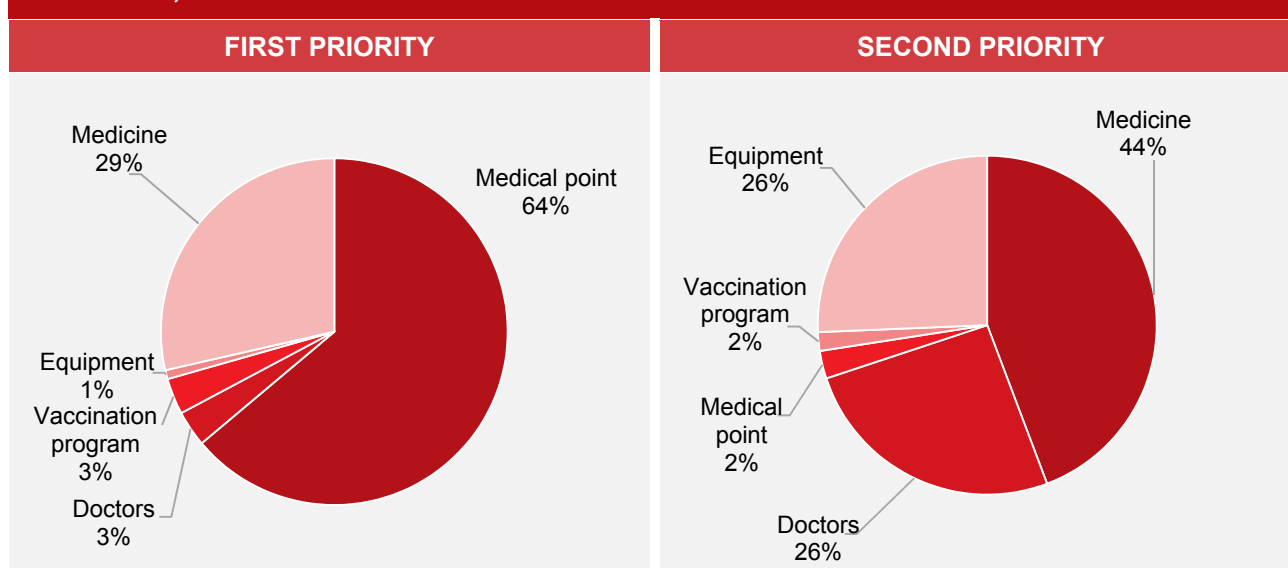
Number of births in the month of October reached 122 births, and there were 4 deaths among clusters, one of the deceased was a child under 5, and the other 3 were people more than 5 years old.

TABLE 5, BIRTHS AND DEATHS IN CAMP CLUSTERS IN OCTOBER 2014

Cluster	Atma	Al Karama	Al Rahma	Qah	Sarmada	Salqin	Bab Al Salameh	Jarablus	Yamadia	Grand Total
# of Births	38	41	14	12	1	2	10	4	0	122
# of Deaths under 5 years	0	0	0	0	0	0	0	1	0	1
# of Deaths over 5 years	1	0	1	0	0	0	1	0	0	3

Increasing the number of medical points was an urgent need for 64% of the camps and it came as the first priority, while providing medicine was the second priority for 44% of camps.

FIGURE 4, HEALTH PRIORITIES IN CAMP CLUSTERS IN OCTOBER 2014



WATER AND SANITATION AND HYGIENE (WASH)

This sector is on a continuous progress due to the intervention of several INGOs assessing and responding to the situation on different levels. Although we have not reached the world-class quality standards for all elements of this sector, the numbers indicate clear improvement in all camps' situations.

According to Sphere standards, each person needs (15 L) of clean water daily.

Fortunately, the average of daily water portion per person is sufficient in all clusters; as shown in the table below.

TABLE 6, DAILY WATER SITUATION IN CAMP CLUSTERS DURING OCTOBER 2014

Cluster	Atma	Al Karama	Al Rahma	Qah	Sarmada	Salqin	Bab Al Salameh	Jarablus	Yamadia
Liters of water trucking /dav	279,500	468,700	306,000	62,000	35,200	151,000	60,000		0
Liters of water from fixed source/dav	452,860	230,000	65,000	204,000	0	0	320,000	115,000	15,000
Liters/person/day	17.3	19.6	24.8	22.8	41.1	26.0	25.5	58.5	16.7

According to Sphere standards, every (250) persons should have access to at least one onsite water point.

The survey shows that all the clusters in study have sufficient number of water points as shown in the table below.

TABLE 7, WATER POINT NUMBERS IN CAMP CLUSTERS IN OCTOBER 2014

Cluster	Atma	Al Karama	Al Rahma	Qah	Sarmada	Salqin	Bab Al Salameh	Jarablus	Yamadia	Grand Total
# of Onsite water points	316	294	73	167	11	279	100	139	7	1,386
# of Persons/ onsite water point	134	121	205	70	78	21	149	14	129	93

The situation of showers has deteriorated in October, especially in Atma Cluster. A total of 2.112 individuals share only one shower in that cluster, and this is a big number compared to other clusters. In addition, Sarmada and Yamadia camps suffer from a complete absence of showers for more than four months.

TABLE 8, NUMBER OF SHOWERS IN CAMP CLUSTERS IN OCTOBER 2014

Cluster	Atma	Al Karama	Al Rahma	Qah	Sarmada	Salqin	Bab Al Salameh	Jarablus	Yamadia
#of Showers	40	228	130	105	0	103	129	69	0
# of Functioning showers	20	124	56	86	0	95	129	69	0
# of Persons/shower	2,112	288	267	136		61	115	28	

According to Sphere standards, every twenty (20) persons should have access to one proper toilet.

The numbers shown in the table below are much less than Sphere standards almost in all clusters, except Salqin cluster where 15 individuals share one toilet.

TABLE 9, NUMBER OF TOILETS IN CAMP CLUSTERS IN OCTOBER 2014

Cluster	Atma	Al Karama	Al Rahma	Qah	Sarmada	Salqin	Bab Al Salameh	Jarablus	Yamadia
# of Toilets	586	1,054	407	360	38	451	255	112	24
# of Functional toilets	582	984	395	331	38	391	255	112	18
# of Persons/toilet	73	36	38	35	23	15	58	18	50

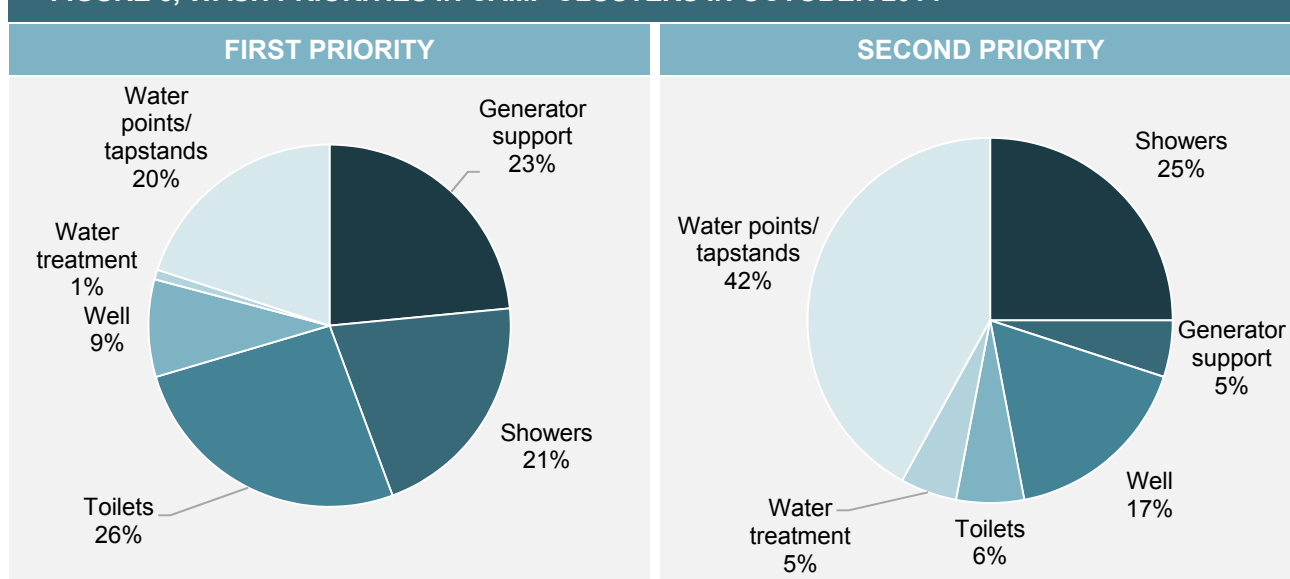
According to Sphere standards, every ten (10) families should be provided with one garbage bin.

It is obvious that all camps need more garbage bins except Salqin, Sarmada and Bab Al Salameh clusters where the number of bins is sufficient.

TABLE 10, NUMBER OF GARBAGE BINS IN CAMP CLUSTERS IN OCTOBER 2014

Cluster	Atma	Al Karama	Al Rahma	Qah	Sarmada	Salqin	Bab Al Salameh	Jarablus	Yamadia
# of Bins	222	51	112	45	17	127	325	11	9
# of Persons/bin	190	700	134	260	50	46	46	179	100

The first priority for 26% of IDPs is providing additional toilets, while the need for maintaining water points and improving their quality came as the second priority for 42% of the IDPs.

FIGURE 5, WASH PRIORITIES IN CAMP CLUSTERS IN OCTOBER 2014

Waste management: The vast majority of camps use soak pits in order to manage organic waste. Several INGOs provide assistance by emptying these soak pits and transporting waste to remote areas. However, no information about the disposal of this waste is available.



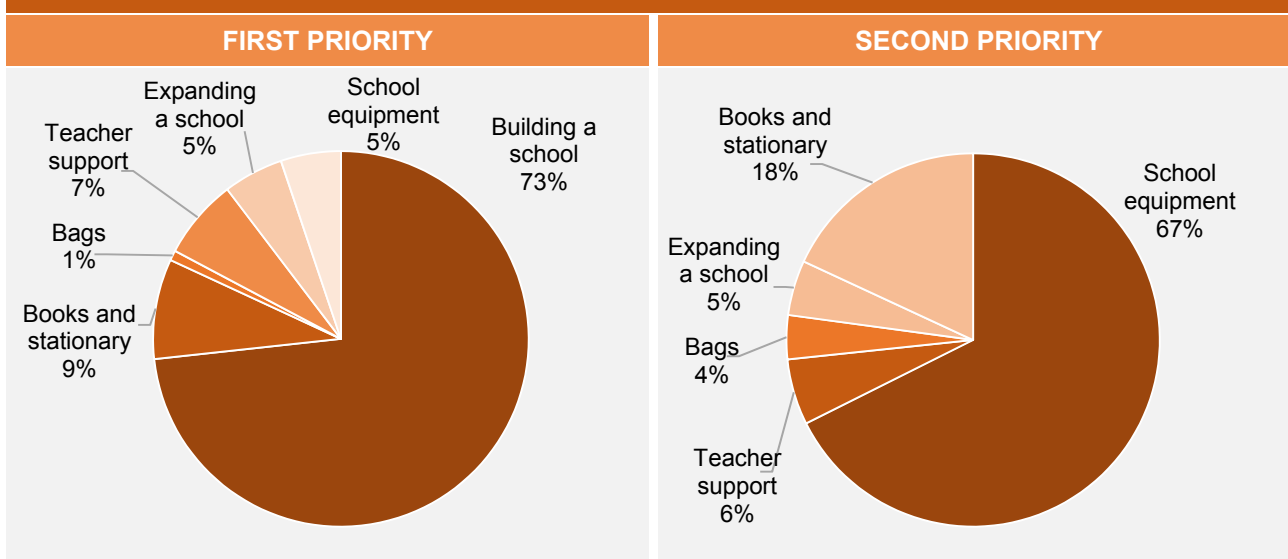
EDUCATION

Despite the slight improvement in the education sector and the entrance of some aids, the majority of school-aged children are still out of schools. The first high priority remains the same, building new schools for 73% of camps, while the second priority is to rehabilitate and equip existing schools for 67% of the camps, as it is shown in figure below.

TABLE 11, NUMBER OF SCHOOLS IN CAMP CLUSTERS IN OCTOBER 2014

Cluster	Atma	Al Karama	Al Rahma	Qah	Sarmada	Salqin	Bab Al Salameh	Jarablus	Yamadia	Grand Total
# of Schools	6	5	2	6	0	2	1	0	1	23
# of Children (6-12) attending school outside the camp	1,788	1,135	113	115	0	0	0	0	0	3,151
# of Children (6-12) attending school in the camp	1,930	779	735	740	0	993	1,825	0	175	7,177

FIGURE 6, EDUCATION PRIORITIES FOR CAMP CLUSTERS IN OCTOBER 2014

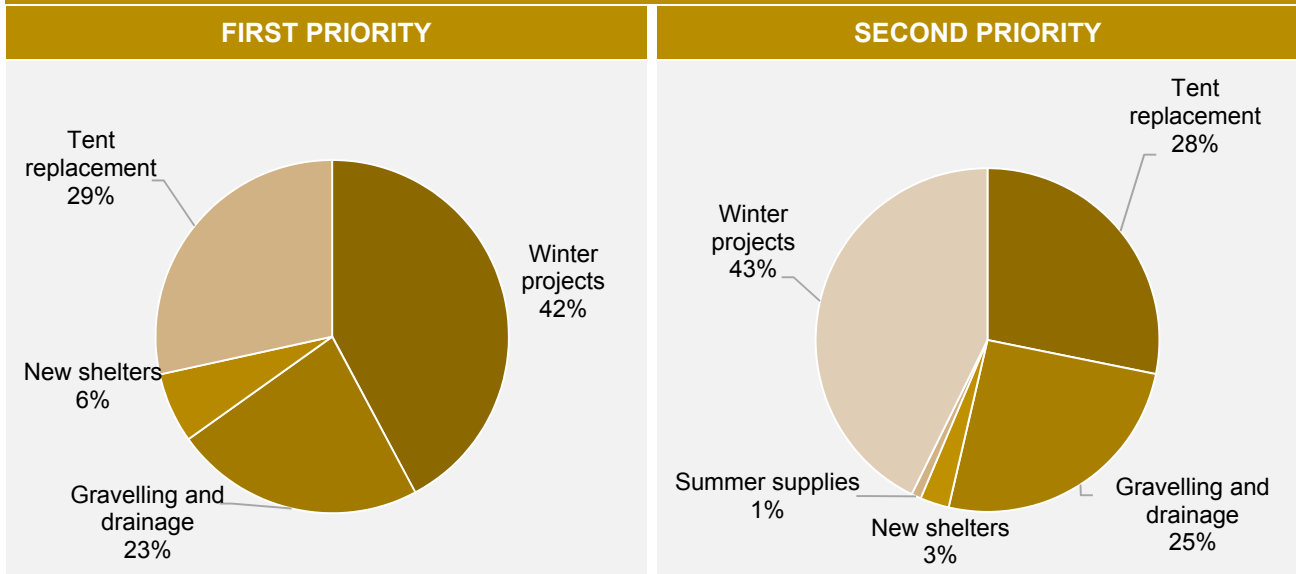


SHELTER AND NON FOOD ITEMS (NFIS)

The prolonged Syrian crisis and the continuous flow of IDPs from all Syrian governorates into camps in order to escape the daily bombing leads to the continuous need for tent replacement. The exposure to sun and high humidity accelerated the wearing out of the tents and made them inappropriate to withstand the expected changes during the winter.

Unfortunately, the ongoing appeals for replacing the uninhabitable tents before the advent of winter were not met. Winterization for the cold winter came as the first priority for 42% of the camps, and as the second priority as well for 43%.

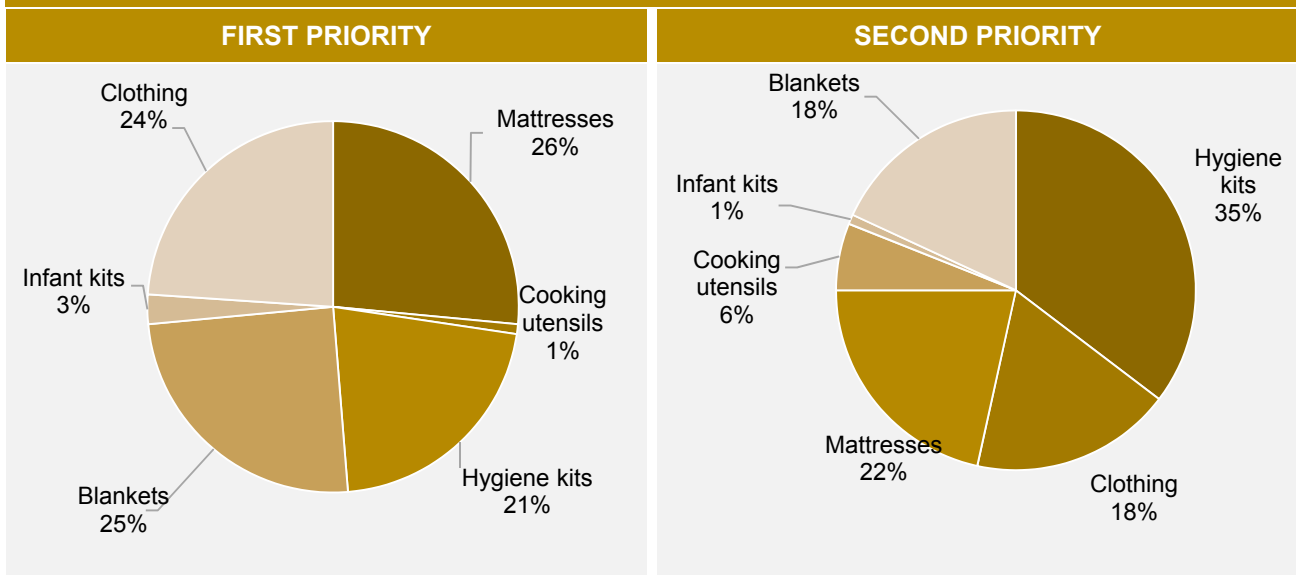
FIGURE 7, SHELTER PRIORITIES IN CAMP CLUSTERS IN OCTOBER 2014



A health awareness campaign was still going on among the camps, and large number of hygiene kits and women hygiene kits were distributed in all camps to prevent the spread of gynecological diseases that had appeared among the women there.

Figure 8 shows the top two priorities for the IDPs. Mattresses were ranked first priority for 26% of the camps, while hygiene kits were the second priority for 35% of the camps.

FIGURE 8, NFI PRIORITIES FOR CAMP CLUSTERS IN OCTOBER 2014



PRIORITIES

The Syrian crisis is now in its fourth year, and in spite of the large number of humanitarian relief organizations working on the Syrian ground; the first priority remains the same, food, for most IDPs. This result reflects the failure of humanitarian relief activity systems, to facilitate living conditions for Syrian people affected by the crisis.

Education was ranked as the second priority, while health services were ranked as the third priority among IDPs in camps, as shown in the following tables.

TABLE 12, FIRST PRIORITIES FOR IDPS IN THE CAMPS IN OCTOBER 2014

Cluster	Atma	Al Karama	Al Rahma	Qah	Sarmada	Salqin	Bab Al Salameh	Jarablus	Yamadia	Grand Total
Food	8	21	11	4		3		4		51
Education	3	4	3	3	1					14
WASH	3	2	5	3						13
Shelter	8	5		1			1			15
Health		3			1				1	5

TABLE 13, SECOND PRIORITIES FOR IDPS IN THE CAMPS IN OCTOBER 2014

Cluster	Atma	Al Karama	Al Rahma	Qah	Sarmada	Salqin	Bab Al Salameh	Jarablus	Yamadia	Grand Total
Education	10	6	10	2		1		1		30
Food	2	4	5	4	1		1			17
Health	2	8	1	5				3		19
NFIs	6	1								7
Shelter	14	4	1						1	20
WASH	1	10	2	1		2				16

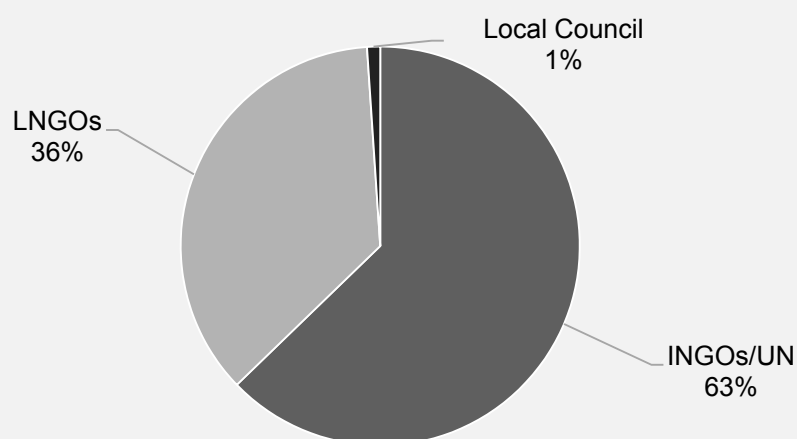
TABLE 14, THIRD PRIORITIES FOR IDPS IN THE CAMPS IN OCTOBER 2014

Cluster	Atma	Al Karama	Al Rahma	Qah	Sarmada	Salqin	Bab Al Salameh	Jarablus	Yamadia	Grand Total
Health		8	7	2	2	3		1		23
Education	5	3	3	4	1			2		18
NFIs	11	1								12
Shelter		5	3							8
Food	19	1	2	1					1	24
WASH		1	4	1			1	1		8

HUMANITARIAN ACTORS

There were not significant changes during October 2014 for the main humanitarian actors who play a big role in providing humanitarian aid to all camps. International Non-governmental Organizations (INGOs) and United Nations played the largest part 63% in delivering humanitarian aid to camps, Local Non-governmental Organizations contributed in 36% of aid delivery, while local councils role was limited to 1% among camps. Figure 9 below shows humanitarian actors' proportion during the month of October 2014.

FIGURE 9, HUMANITARIAN ASSISTANCE ACTORS IN CAMP CLUSTERS IN OCTOBER 2014



ANNEX I

TABLE 15, CLUSTER INFORMATION IN OCTOBER 2014

Cluster	Cluster code	Governorate	Governorate Code	District	District Code	Sub-District	Sub-District Code	Community	Community Code	Count of Camps
Atma	CL0701	Idleb	SY07	Harim	SY0703	Dana	SY070301	Atma	C4130	37
Al Karama	CL0702	Idleb	SY07	Harim	SY0703	Dana	SY070301	Qah	C4131	39
Al Rahma	CL0703	Idleb	SY07	Harim	SY0703	Dana	SY070301	Qah	C4131	23
Qah	CL0704	Idleb	SY07	Harim	SY0703	Dana	SY070301	Qah	C4131	12
Sarmada	CL0705	Idleb	SY07	Harim	SY0703	Dana	SY070301	Sarmada	C4121	3
Salqin	CL0706	Idleb	SY07	Harim	SY0703	Salqin	SY070302	Big Hir Jamus	C4141	4
Bab Al Salameh	CL0201	Aleppo	SY02	A'zaz	SY0204	A'zaz	SY020400	Salama	C1561	3
Jarablus	CL0202	Aleppo	SY02	Jarablus	SY0208	Jarablus	SY020800	Jarablus	C2227	4
Manbij	CL0203	Aleppo	SY02	Menbij	SY0205	Menbij	SY020500	Menbij	C1767	4
Yamadia	CL0601	Lattakia	SY06	Lattakia	SY0600	Rabee'a	SY060002	Qasab	C3506	4
Grand Total										133

GEOGRAPHICAL CLASSIFICATIONS

Governorate	Highest form of governance below the national level
District	Sub-division of a governorate in which government institutions operate
Sub-district	Sub-division of a district composed of towns and villages
Village	Lowest administrative unit

ANNEX II

TABLE 16, CLUSTER AND CAMP NAMES AND INFORMATION IN OCTOBER 2014

ID	Camp Name	Code	Cluster	Status	Collected Data	Families	Individuals
1	Bab Al Salameh	CM020101	Bab Al Salameh	Functional	Yes	2294	14894
2	Bab Al Eman	CM020102	Bab Al Salameh	Functional	No		
3	Bab Al Noor	CM020103	Bab Al Salameh	Functional	No		
4	Jarablus [stadium]	CM020201	Jarablus	Functional	Yes	85	409
5	Jarablus [Al	CM020203	Jarablus	Functional	Yes	40	212
6	Jarablus 4	CM020204	Jarablus	Functional	Yes	168	844
7	Jarablus 5	CM020205	Jarablus	Functional	Yes	100	500
8	Aataa	CM020301	Manbij	Functional	No		
9	Abden	CM020302	Manbij	Functional	No		
10	Om Al Sath	CM020303	Manbij	Functional	No		
11	Zakia	CM020304	Manbij	Functional	No		
12	Shams Al Horia	CM070102	Atma	Functional	Yes	53	402
13	Al Ehssan	CM070103	Atma	Functional	Yes	115	717
14	Al Zohour	CM070104	Atma	Functional	Yes	173	885
15	Al Jazeera	CM070105	Atma	Functional	Yes	384	2163
16	Ehssas1	CM070106	Atma	Functional	Yes	345	2111
17	Ehssas2	CM070107	Atma	Functional	Yes	123	855
18	Abi Al Fidaa	CM070108	Atma	Functional	Yes	136	897
19	Al Amana	CM070109	Atma	Functional	Yes	118	735
20	Al Anfal	CM070110	Atma	Functional	Yes	108	831
21	Al Ansar	CM070111	Atma	Functional	Yes	112	745
22	Al Arabiya	CM070112	Atma	Functional	Yes	680	4051
23	Al Bayan	CM070113	Atma	Functional	Yes	332	2238
24	Al Ber Wa Al Taqwaa	CM070114	Atma	Functional	Yes	76	455
25	Al Faroq Omar	CM070115	Atma	Functional	Yes	290	2118
26	Al Foqaraa Wa Al	CM070116	Atma	Functional	Yes	92	639
27	Al Gaith	CM070117	Atma	Functional	Yes	345	2343
28	Al Hamza	CM070118	Atma	Functional	Yes	79	545
29	Al khalil	CM070119	Atma	Functional	Yes	90	619
30	Al Manseen	CM070120	Atma	Functional	Yes	44	275
31	AL Muhajireen	CM070121	Atma	Functional	Yes	325	2270
32	Al Nada	CM070122	Atma	Functional	Yes	133	884
33	Al Resala	CM070123	Atma	Functional	Yes	134	939
34	Al Yarmook	CM070125	Atma	Functional	Yes	93	663
35	Atchan	CM070126	Atma	Functional	Yes	200	1319
36	Bashaer Al Nasser	CM070127	Atma	Functional	Yes	162	1044
37	Ebado Al Rhman	CM070128	Atma	Functional	Yes	120	849
38	Ebado Allah	CM070129	Atma	Functional	Yes	50	446
39	Om Al Qqora	CM070130	Atma	Functional	Yes	116	790
40	Oriant	CM070131	Atma	Functional	Yes	305	2180
41	Rama Allah	CM070132	Atma	Functional	Yes	138	875
42	Ryad Al Haramen	CM070133	Atma	Functional	Yes	120	803
43	Shaza Al Horeea	CM070134	Atma	Functional	Yes	135	992

ID	Camp Name	Code	Cluster	Status	Collected Data	Families	Individuals
44	Al Itehad	CM070135	Atma	Unstable	Yes		
45	Al Yamama	CM070136	Atma	Functional	Yes	65	578
46	Reef Hama Al	CM070137	Atma	Functional	Yes	190	1336
47	Reef Halap Al Janoby	CM070138	Atma	Functional	Yes	195	1532
48	Al Hiba	CM070139	Atma	Functional	Yes	205	1123
49	Al Karama	CM070201	Al Karama	Functional	Yes	530	3176
50	Al Safa Wa Al Marwa	CM070202	Al Karama	Functional	Yes	155	1300
51	Taibah	CM070203	Al Karama	Functional	Yes	220	1892
52	Wa'eetasemo	CM070204	Al Karama	Functional	Yes	435	2413
53	Al Doaa	CM070205	Al Karama	Functional	Yes	303	1856
54	Shams Al Horia	CM070206	Al Karama	Functional	Yes	227	1309
55	Al Aqsa	CM070207	Al Karama	Functional	Yes	130	584
56	Al Faraj	CM070208	Al Karama	Functional	Yes	180	985
57	Al Haq	CM070209	Al Karama	Functional	Yes	132	643
58	Al Farook	CM070210	Al Karama	Functional	Yes	160	934
59	Al Ikhaa	CM070211	Al Karama	Functional	Yes	286	1827
60	Al Shuhada	CM070212	Al Karama	Functional	Yes	112	504
61	Ahl Al Sham	CM070213	Al Karama	Functional	Yes	140	716
62	Al Ahrar	CM070214	Al Karama	Functional	Yes	218	1570
63	Al Aseel	CM070215	Al Karama	Functional	Yes	129	704
64	Al Haramyn	CM070216	Al Karama	Functional	Yes	190	1450
65	Al Sedeq	CM070217	Al Karama	Functional	Yes	44	230
66	Noor Al Mustafa	CM070218	Al Karama	Functional	Yes	202	1031
67	Al Hejaz	CM070219	Al Karama	Functional	Yes	144	650
68	Al Mahabba	CM070220	Al Karama	Functional	Yes	88	546
69	Al Mostaqbal	CM070221	Al Karama	Functional	Yes	151	740
70	Al Shaheed Saleh	CM070222	Al Karama	Functional	Yes	126	677
71	Ataa	CM070223	Al Karama	Functional	Yes	118	704
72	Doaa Al Kuwait Wa	CM070224	Al Karama	Functional	Yes	150	935
73	Halap	CM070225	Al Karama	Functional	Yes	83	496
74	Homs	CM070226	Al Karama	Functional	Yes	74	345
75	Reef Hama Al	CM070227	Al Karama	Functional	Yes	95	475
76	Salah Al Dien	CM070228	Al Karama	Functional	Yes	208	972
77	Al Rajaa	CM070229	Al Karama	Functional	Yes	162	899
78	Al Manarah	CM070230	Al Karama	Functional	Yes	135	756
79	Al Rawda	CM070231	Al Karama	Functional	Yes	50	248
80	Atfal Al Ghad	CM070232	Al Karama	Functional	Yes	60	320
81	Fadl Allah	CM070233	Al Karama	Functional	Yes	115	538
82	Noor AL Shaam	CM070234	Al Karama	Functional	Yes	90	519
83	Yasmin Al Sham	CM070235	Al Karama	Unstable	Yes		
84	Zahret Al Madaaen	CM070236	Al Karama	Functional	Yes	125	572
85	Noor Al Mostaqbal	CM070237	Al Karama	Functional	Yes	163	1003
86	Salah Al Dien2	CM070238	Al Karama	Functional	Yes	171	918
87	Mogamaa Al	CM070239	Al Karama	Functional	Yes	42	241
88	Al Madinah Al	CM070301	Al Rahma	Functional	Yes	95	550
89	Al Nour	CM070302	Al Rahma	Functional	Yes	132	927
90	Al Rahma	CM070303	Al Rahma	Functional	Yes	135	667

ID	Camp Name	Code	Cluster	Status	Collected Data	Families	Individuals
91	Al Waleed	CM070304	Al Rahma	Functional	Yes	104	638
92	Al Muatesm	CM070305	Al Rahma	Functional	Yes	72	320
93	Leeajlecom	CM070306	Al Rahma	Functional	Yes	176	1064
94	Al Fardoos	CM070307	Al Rahma	Functional	Yes	150	991
95	Al Intesar	CM070308	Al Rahma	Functional	Yes	78	528
96	Al Nwaeer	CM070309	Al Rahma	Functional	Yes	225	1403
97	Al Aasi	CM070310	Al Rahma	Functional	Yes	117	635
98	Al Anssar	CM070311	Al Rahma	Functional	Yes	103	471
99	Al Immam	CM070312	Al Rahma	Functional	Yes	156	732
100	Al Qora Al Mankoba	CM070313	Al Rahma	Functional	Yes	110	602
101	Atfal Shuhada Al	CM070314	Al Rahma	Functional	Yes	80	483
102	Hibat Allah	CM070315	Al Rahma	Functional	Yes	105	637
103	Dar Al Aytam	CM070316	Al Rahma	Functional	Yes	123	580
104	Shabab Al Khayr	CM070317	Al Rahma	Functional	Yes	204	1127
105	Toeor Al Jana	CM070318	Al Rahma	Functional	Yes	90	442
106	Abo Bkr Alseedeq	CM070319	Al Rahma	Functional	Yes	125	824
107	Al Mohajerin	CM070320	Al Rahma	Unstable	Yes		
108	Al Qadisya	CM070321	Al Rahma	Functional	Yes	117	564
109	Bany Omayya	CM070322	Al Rahma	Functional	Yes	67	343
110	Al Arbayeen	CM070323	Al Rahma	Functional	Yes	75	444
111	Al Jolan	CM070401	Qah	Functional	Yes	235	1353
112	Al Nasser	CM070403	Qah	Functional	Yes	255	1606
113	Al Salam	CM070404	Qah	Functional	Yes	345	1889
114	Al Midan	CM070405	Qah	Functional	Yes	200	1118
115	Bab Al Hawa Upper	CM070406	Qah	Functional	Yes	97	478
116	Qah	CM070407	Qah	Functional	Yes	312	1592
117	Al Forkan	CM070408	Qah	Functional	Yes	245	1363
118	Dar Al Reayah	CM070409	Qah	Functional	Yes	198	973
119	Al Majed	CM070410	Qah	Functional	Yes	89	394
120	Al Tawheed	CM070411	Qah	Functional	Yes	40	178
121	Al khalij Al Arabi	CM070412	Qah	Functional	Yes	73	375
122	Sham Al Izza	CM070413	Qah	Functional	Yes	83	365
123	Al Dana	CM070501	Sarmada	Functional	Yes	37	151
124	Al Shahbba	CM070502	Sarmada	Functional	Yes	87	475
125	Areaha	CM070503	Sarmada	Functional	Yes	48	230
126	Ayidoun	CM070601	Salqin	Functional	Yes	662	2766
127	Kadimon	CM070602	Salqin	Functional	Yes	393	2145
128	Sameddon	CM070603	Salqin	Functional	Yes	178	901
129	Omhat Al Moomenin	CM070604	Salqin	Functional	No		
130	Yamadia	CM060101	Yamadia	Functional	Yes	171	900
131	Kherbat Al Joz	CM060102	Yamadia	Unstable	Yes		
132	Manhale	CM060103	Yamadia	Unstable	Yes		
133	Zaytona	CM060104	Yamadia	Unstable	Yes		

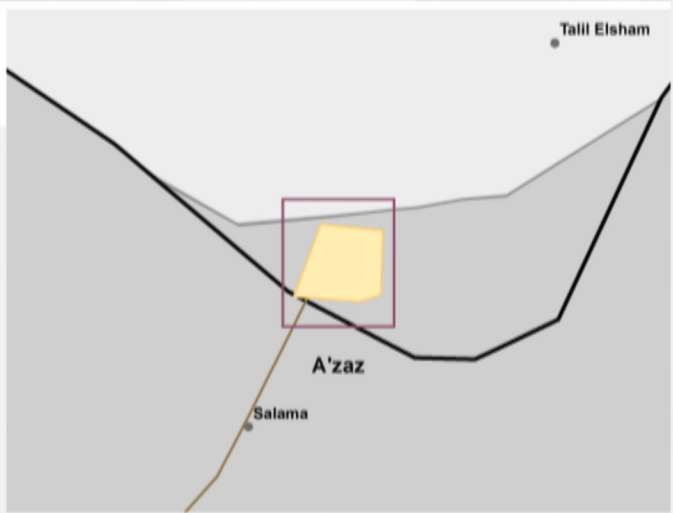
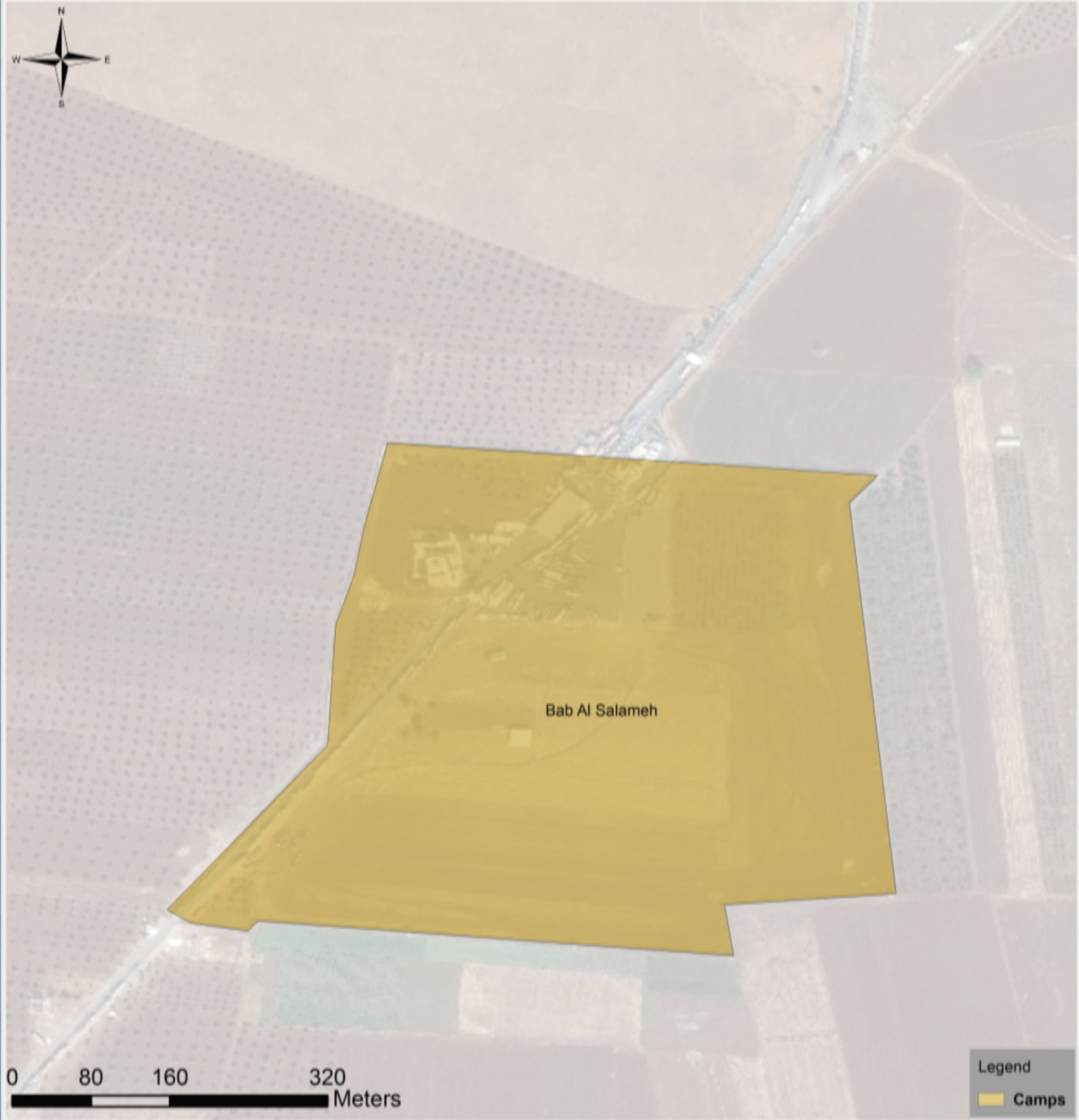
ANNEX III

IDP Camp monitoring report: Bab Al Salameh Cluster

CMR-03-00 5-Oct-2014



وحدة تنسيق الدعم
ASSISTANCE COORDINATION UNIT

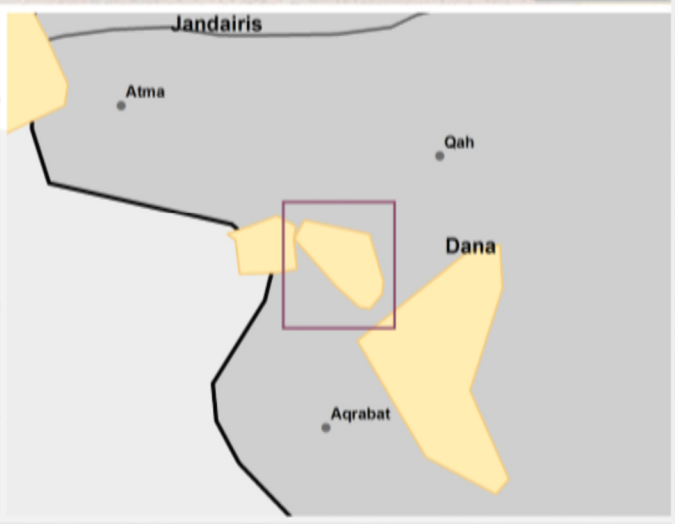
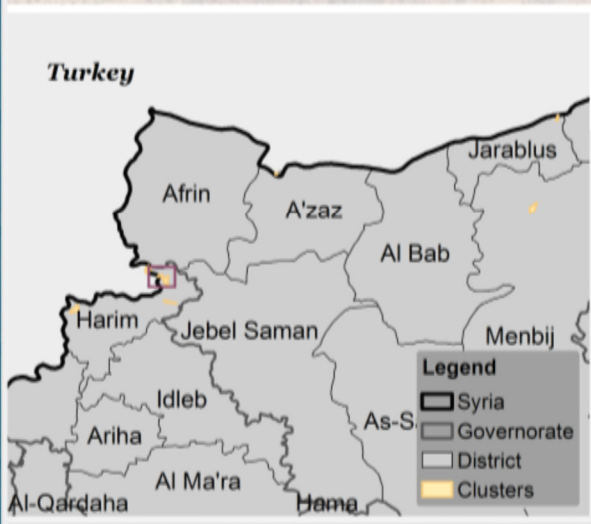
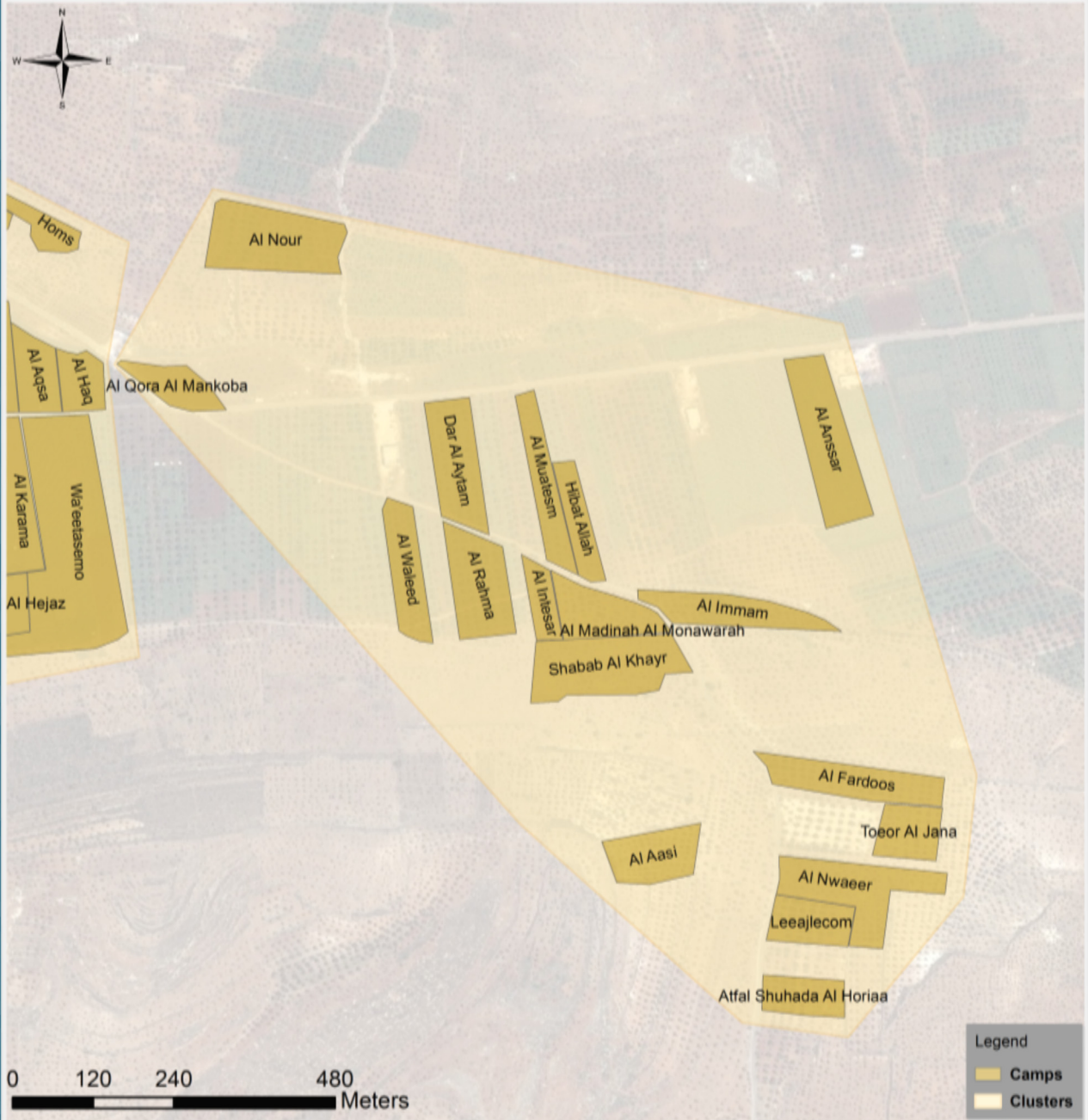


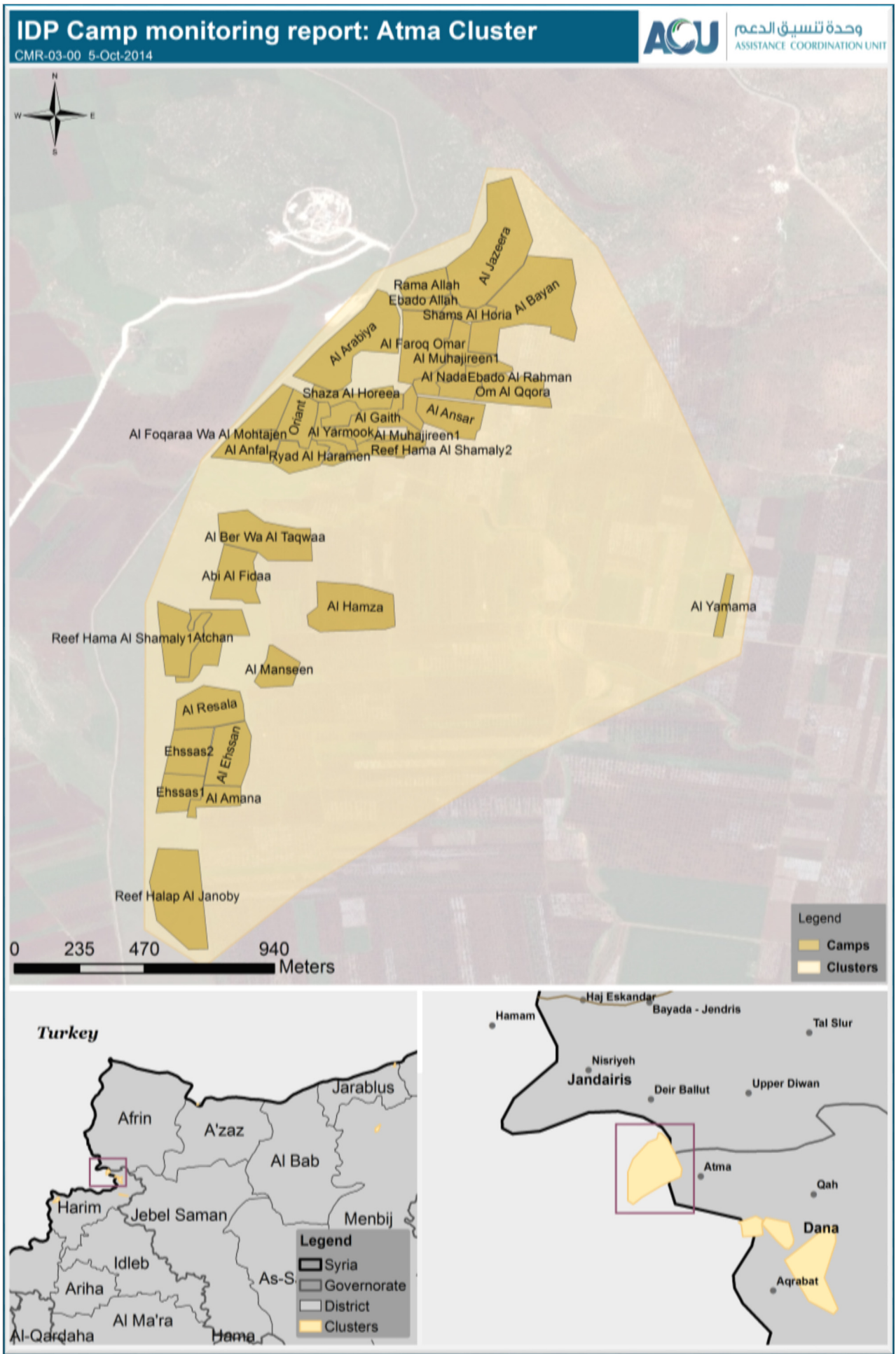
IDP Camp monitoring report: Al Rahma Cluster

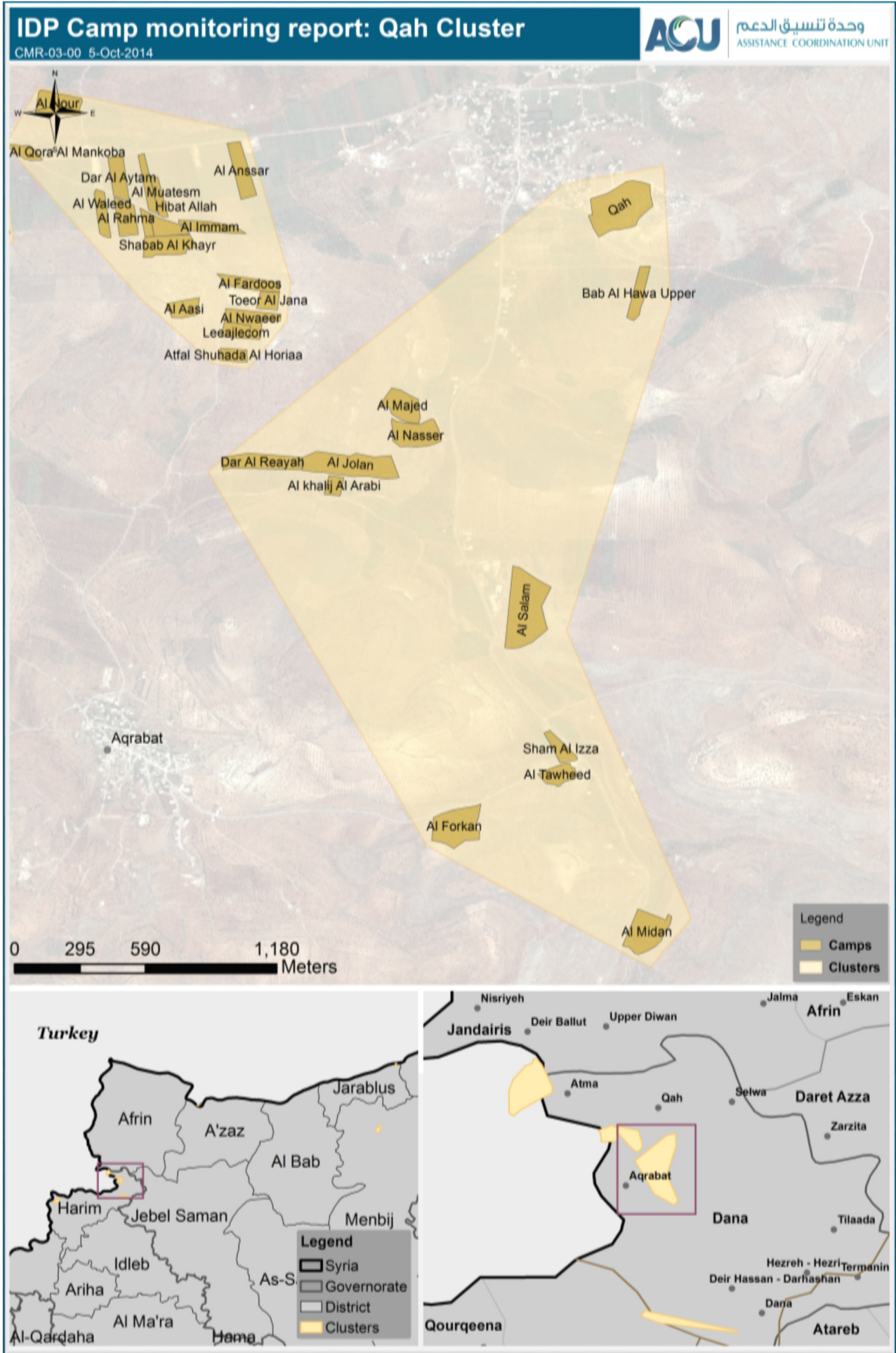
CMR-03-00 5-Oct-2014



وحدة تنسيق الدعم
ASSISTANCE COORDINATION UNIT





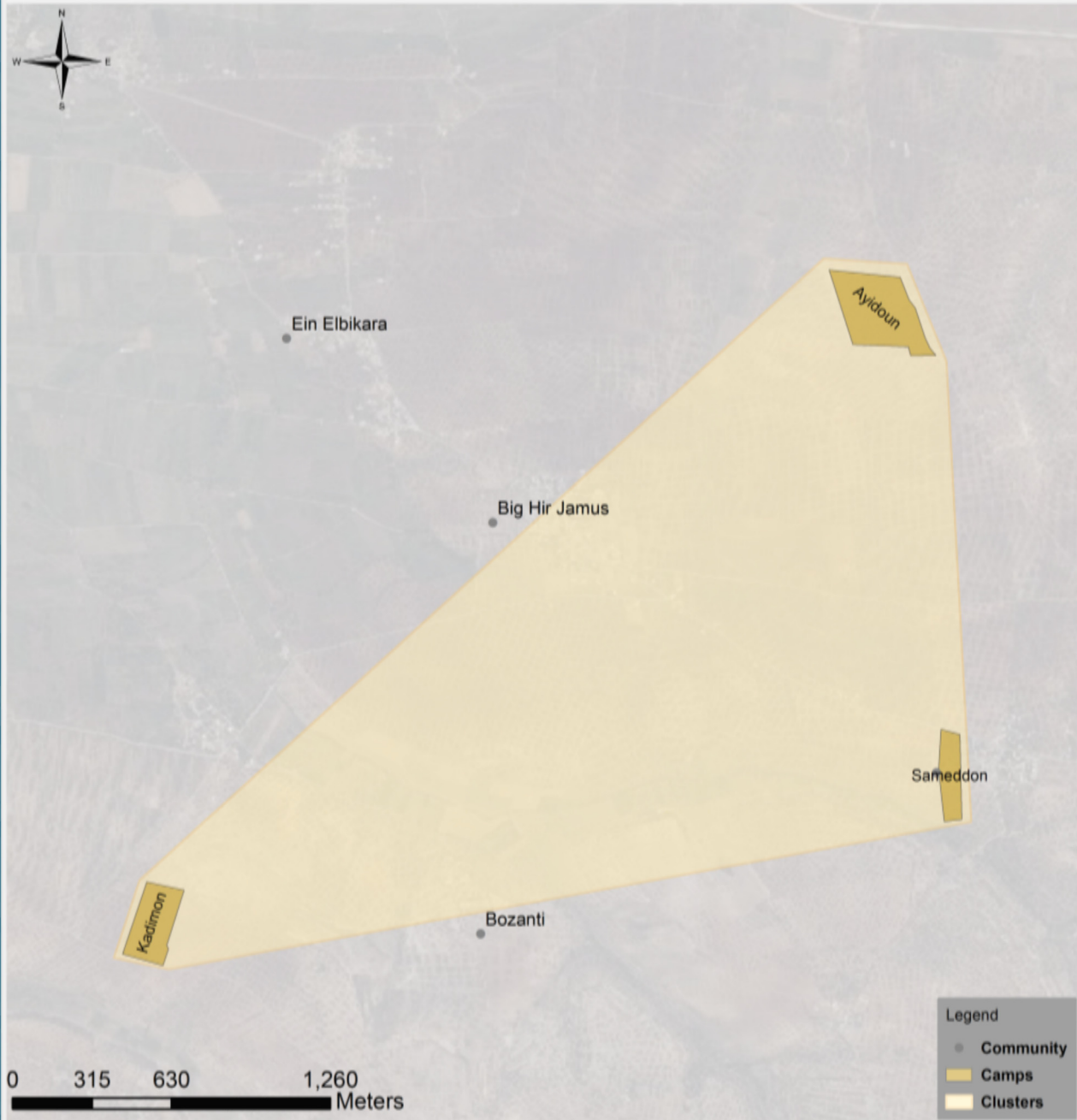


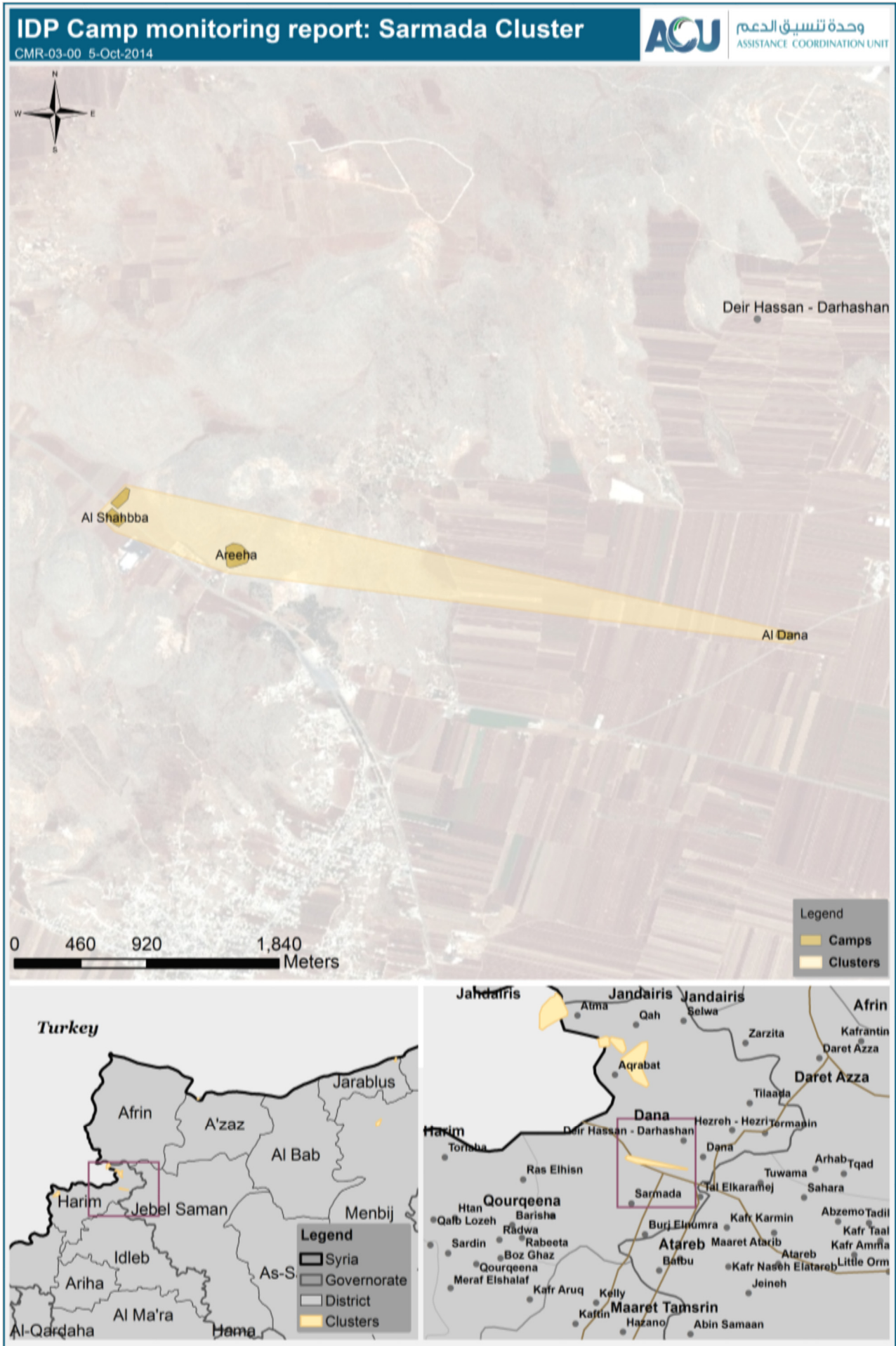
IDP Camp monitoring report: Salqin Cluster

CMR-03-00 5-Oct-2014



وحدة تنسيق الدعم
ASSISTANCE COORDINATION UNIT





IDP Camp monitoring report: Jarablus Cluster

CMR-03-00 5-Oct-2014



وحدة تنسيق الدعم
ASSISTANCE COORDINATION UNIT

