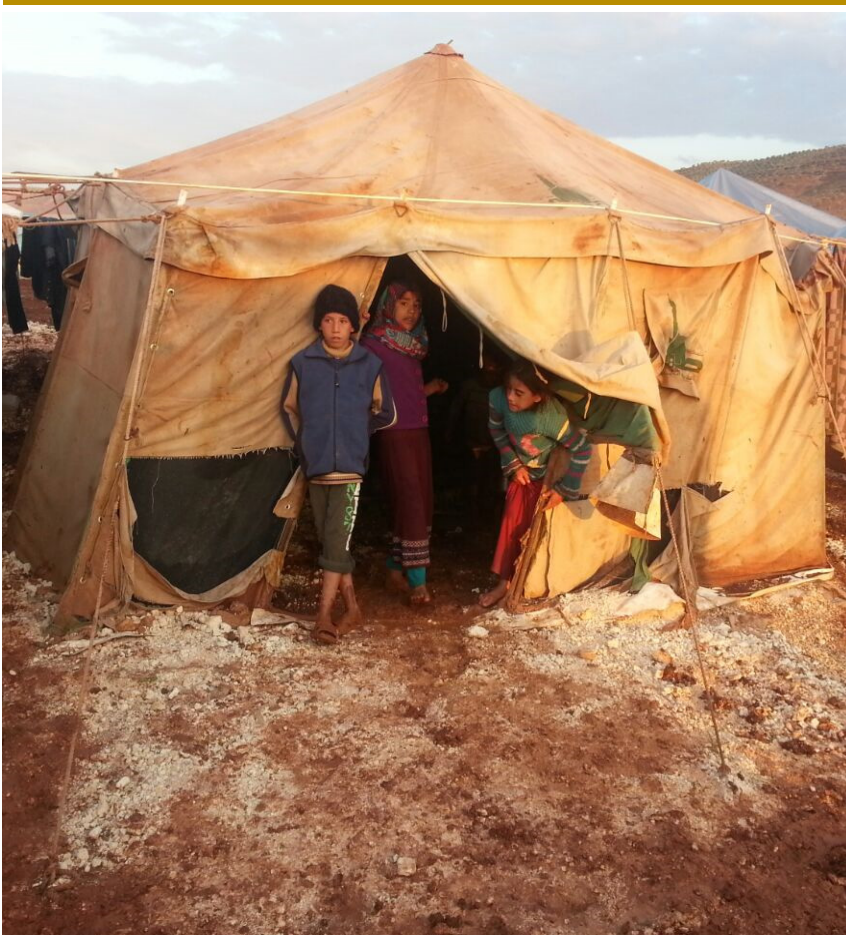


# IDP CAMP MONITORING REPORT NORTHERN SYRIA

Data Covers  
**November 2014**  
Issue No.16



## THE REPORT COVERS:

### DEMOGRAPHICS

### HUMANITARIAN SITUATION

FOOD SECURITY

HEALTH

WASH

EDUCATION

SHELTER AND NFIs

### PRIORITIES

### HUMANITARIAN ACTORS

### ANNEXES

CLUSTER LOCATIONS AND CODES

LIST OF CAMPS

CAMP MAPS

PREPARED BY  
THE INFORMATION MANAGEMENT UNIT (IMU)  
OF THE ASSISTANCE COORDINATION UNIT (ACU)





## CONTENTS

SUMMARY .....	1
LIST OF ACRONYMS AND ABBREVIATIONS .....	2
LIST OF TABLES AND FIGURES .....	2
INTRODUCTION .....	3
METHODOLOGY .....	3
ASSESSMENT SAMPLE .....	3
ASSESSMENT TOOLS.....	3
DATA COLLECTION .....	4
DATA MANAGEMENT AND ANALYSIS.....	4
DEMOGRAPHICS .....	6
HUMANITARIAN SITUATION .....	5
FOOD SECURITY .....	5
HEALTH.....	6
WATER AND SANITATION AND HYGIENE (WASH) .....	7
EDUCATION .....	9
SHELTER AND NON FOOD ITEMS (NFIS) .....	9
PRIORITIES .....	11
HUMANITARIAN ACTORS .....	12
ANNEX I, CLUSTER INFORMATION .....	12
ANNEX II, CLUSTER AND CAMP NAMES AND INFORMATION .....	13
ANNEX III, CLUSTER MAPS .....	16

The **Information Management Unit (IMU)** aims to strengthen the decision-making capacity of aid actors responding to the Syrian crisis by collecting, processing, and sharing information about the humanitarian situation in Syria. For this purpose, the IMU has a wide network of enumerators who have been recruited depending on specific criteria such as their level of education, the web of their social relationships with different key sources of information, as well as their ability to work under pressure and to communicate in an efficient manner. IMU collects data which is difficult to access by international aid actors, and it releases different types of information outputs including maps, daily situation reports, flash reports on specific issues, camp monitoring reports, monthly reports (food-price index), and thematic reports.

For more information and to access to IMU products, please visit: [www.acu-sy.org](http://www.acu-sy.org). You can also write to us directly at: [imu@acu-sy.org](mailto:imu@acu-sy.org) and call us on: +90-342-22-010/77/88/99.

## SUMMARY

Assistance Coordination Unit (ACU) launched the 16th edition of its monthly IDP Camp Monitoring assessment. The assessment was conducted to assess the IDPs living conditions in camps during November 2014.

There was no significant displacement during November due to the cold weather and the low intensity on some frontlines. There was a slight decrease in IDP numbers (660 IDPs) who most likely moved out of Jarablus camps into Turkey. Some IDPs moved from Bab Al Salameh Camp into new camps (Bab Al Eman and Sijjo) which were organised by the Turkish NGO I.H.H. However, the number of camps in Atma Cluster increased from 39 to 41 because of the split of some camps forming new ones with new administration. Al Karama Cluster had a new camp as well.

The food sector improved significantly during November due to the distribution of appropriate numbers of food baskets in addition to some other food items and rice bags to many camps.

The health sector was still suffering from the shortage of medical points and medical staff. There was a spread of epidemics and an increase in fever and respiratory diseases due to bad weather conditions.

The education sector had the same problems due to the shortage of teaching staff with a slight improvement in Al Karama and Al Rahma clusters. The other clusters had no significant changes in this sector.

There was a distribution of heaters, thermal blankets, hygiene kits, some plastic sheets and kitchen kits to many camps.

FIGURE 1, CLUSTERS AND NUMBER OF CAMPS

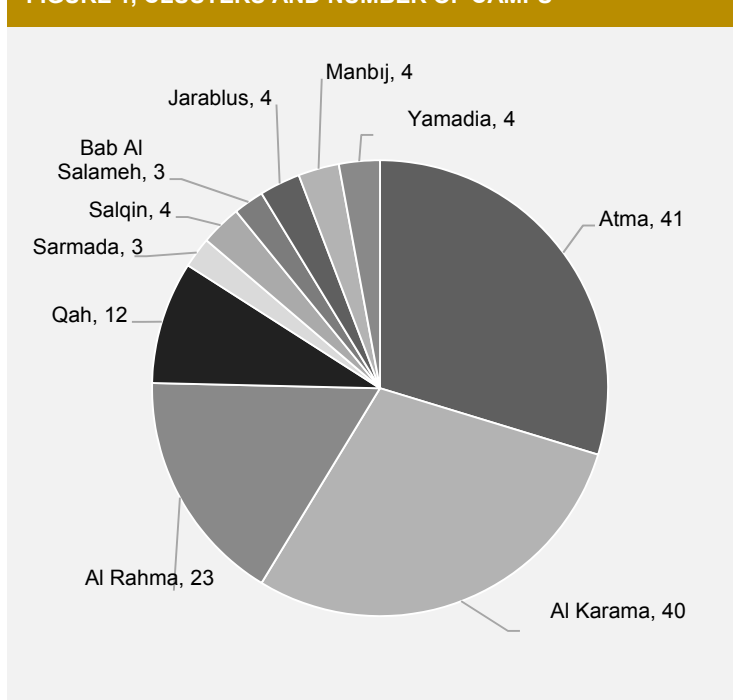


TABLE 1, STATUS OF CAMPS AND ABILITY TO COLLECT DATA

Status	Ability to Collect Data	Atma	Al Karama	Al Rahma	Qah	Sarmada	Salqin	Bab Al Salameh	Jarablus	Manbij	Yamadia	Total
Functioning	Yes	41	39	23	12	3	3	1	4		1	127
	No						1	2		4		7
Unstable	Yes		1								3	4
	No											
Total		41	40	23	12	3	4	3	4	4	4	138

## LIST OF ACRONYMS AND ABBREVIATIONS

<b>ACU</b>	Assistance Coordination Unit
<b>GIS</b>	Geographic Information System
<b>HC</b>	Host Communities
<b>IDP</b>	Internally Displaced Person
<b>IMU</b>	Information Management Unit
<b>INGO</b>	International Non-Governmental Organization
<b>KI</b>	Key Informant
<b>LC</b>	Local Council
<b>LNGO</b>	Local Non-Governmental Organization
<b>MT</b>	Metric Ton
<b>NFI</b>	Non-Food Item
<b>NGO</b>	Non-governmental Organization
<b>OCHA</b>	Office for the Coordination of Humanitarian Affairs
<b>RC</b>	Relief Council
<b>SARC</b>	Syrian Arab Red Crescent
<b>SBF</b>	Syrian Business Forum
<b>SHARP</b>	Syrian Arab Republic Humanitarian Assistance Response Plan
<b>UN</b>	United Nations
<b>UNHCR</b>	United Nations High Commissioner for Refugees
<b>UNICEF</b>	United Nations Children's Fund
<b>WFP</b>	World Food Program
<b>CCCM</b>	Camp Coordination and Camp Management

## LIST OF TABLES AND FIGURES

TABLE 1, STATUS OF CAMPS AND ABILITY TO COLLECT DATA.....	1
TABLE 2, POPULATION IN CAMP CLUSTERS IN NOVEMBER 2014 .....	5
TABLE 3, VULNERABLE POPULATION IN CAMP CLUSTERS IN NOVEMBER 2014 .....	5
TABLE 4, DOCTORS AND MEDICAL POINTS.....	6
TABLE 5, BIRTHS AND DEATHS IN CAMP CLUSTERS IN NOVEMBER 2014 .....	6
TABLE 6, DAILY WATER SITUATION IN CAMP CLUSTERS DURING NOVEMBER 2014 .....	7
TABLE 7, WATER POINTS NUMBERS IN CAMP CLUSTERS IN NOVEMBER 2014 .....	7
TABLE 8, NUMBER OF SHOWERS IN CAMP CLUSTERS IN NOVEMBER 2014 .....	8
TABLE 9, NUMBER OF TOILETS IN CAMP CLUSTERS IN NOVEMBER 2014.....	8
TABLE 10, NUMBER OF GARBAGE BINS IN CAMP CLUSTERS IN NOVEMBER 2014 .....	8
TABLE 11, NUMBER OF SCHOOLS IN CAMP CLUSTERS IN NOVEMBER 2014 .....	9
TABLE 12, FIRST PRIORITIES FOR IDPS IN THE CAMPS IN NOVEMBER 2014 .....	11
TABLE 13, SECOND PRIORITIES FOR IDPS IN THE CAMPS IN NOVEMBER 2014 .....	11
TABLE 14, THIRD PRIORITIES FOR IDPS IN THE CAMPS IN NOVEMBER 2014.....	11
TABLE 15, CLUSTERS INFORMATION IN NOVEMBER 2014 .....	12
TABLE 16, CLUSTER AND CAMP NAMES AND INFORMATION IN NOVEMBER 2014 .....	13
FIGURE 1, CLUSTERS AND NUMBER OF CAMPS.....	1
FIGURE 2, POPULATION DEMOGRAPHY IN CAMPS FROM AUGUST 2013 TO NOVEMBER 2014.....	4
FIGURE 3, FOOD PRIORITIES FOR IDPS IN ALL CAMP CLUSTERS DURING NOVEMBER 2014 .....	6
FIGURE 4, HEALTH PRIORITIES IN CAMP CLUSTERS IN NOVEMBER 2014.....	7
FIGURE 5, WASH PRIORITIES IN CAMP CLUSTERS IN NOVEMBER 2014 .....	8
FIGURE 6, EDUCATION PRIORITIES FOR CAMP CLUSTERS IN NOVEMBER 2014 .....	9
FIGURE 7, SHELTER PRIORITIES IN CAMP CLUSTERS IN NOVEMBER 2014 .....	10
FIGURE 8, NFI PRIORITIES FOR CAMP CLUSTERS IN NOVEMBER 2014 .....	10
FIGURE 9, HUMANITARIAN ASSISTANCE ACTORS IN CAMP CLUSTERS IN NOVEMBER 2014.....	12

## INTRODUCTION

One of ACU's main mandates is to coordinate humanitarian aid for affected IDPs in Northern Syria camps. This duty involves providing accurate information in certain periods about the humanitarian situation in those camps, especially in the environments where security issues limit the access to information. Therefore, the 16th edition of the camp monitoring monthly report is released; it presents an assessment about the living conditions inside one hundred thirty-eight camps in ten different camp clusters in northern Syria.

This report keeps the donors, neighbouring country governments, and other humanitarian agencies up to date with actual changes during November 2014.

The report's first objective is to provide decision makers with comprehensive and operational information about IDP camps, in order to get the best responses about the dynamic situation of those camps, and to setup a continuous monitoring system to evaluate the effects of these responses on the living standards of the IDPs in those camps. Secondly, the report aims to support the coordination between all relevant humanitarian agencies including communities, international NGOs and the UN that play a role in responding to Syrian crisis and to promote accountability across them.

This report is divided into four main parts:

The first part shows the population demography, and thus clarifies the impacts of war on IDPs.

The humanitarian situation analysis is covered in the second part showing the food situation, health services, water and sanitation, education, shelter and NFIs.

The third part tackles "need priorities" in camps assessing the needs, analysing them, then classifying them into first, second and third priority ranks.

The fourth part is assigned to talk about humanitarian actors who play a big role in providing humanitarian assistance to all camps.

Annexes II and I include tables with details of camps in each cluster, number of families, and number of persons in each camp.

Annex III includes detailed maps for the geographical sites for most camps in northern Syria, where the IMU's enumerators traced the boundaries of these camps in order to install the geographical locations of these camps to facilitate the work of humanitarian organizations interested in aid delivery to those IDP camps.

## METHODOLOGY

This section provides an overview of the methodology used for the assessment. The overall approach combines quantitative and qualitative methods. The assessment includes: 1) key informant interviews with people in charge of the camps, 2) direct field observations and sample testing done by enumerators, and 3) review of registration data available at camp management offices. Population information was gathered tent by tent. High priority needs of the IDPs were evaluated via live group meetings and observations with camp residents.

### ASSESSMENT SAMPLE

This assessment covered 138 camps in northern Syria grouped within 10 clusters in three governorates (Aleppo, Idlib, and Latakia).

### ASSESSMENT TOOLS

The tools used in this assessment include a questionnaire designed by the IMU staff. Then, enumerators conducted it through key informant interviews with IDPs and camp managers.

## DATA COLLECTION

The data collection phase started on November 20th, 2014 and was completed within 10 days. Data collection was carried out through IMU’s network of enumerators based at camps in northern Syria. In total, 22 enumerators, who are residents in the camps, contributed to this assessment. These enumerators have been recruited by IMU based on specific criteria such as their level of education, the web of their social relationships, notably with local community, camp managers and other key sources of information, as well as their ability to work under pressure and to communicate in an efficient manner.

Enumerators selected by IMU have an extensive knowledge of the camps where they are based. For instance, they were quickly able to get the contact information of each camp manager in the cluster, observe all details and monitor the conditions of IDPs.

## DATA MANAGEMENT AND ANALYSIS

IMU Data Management Officer received the collected data on paper and proceeded with data entry, using excel sheets.

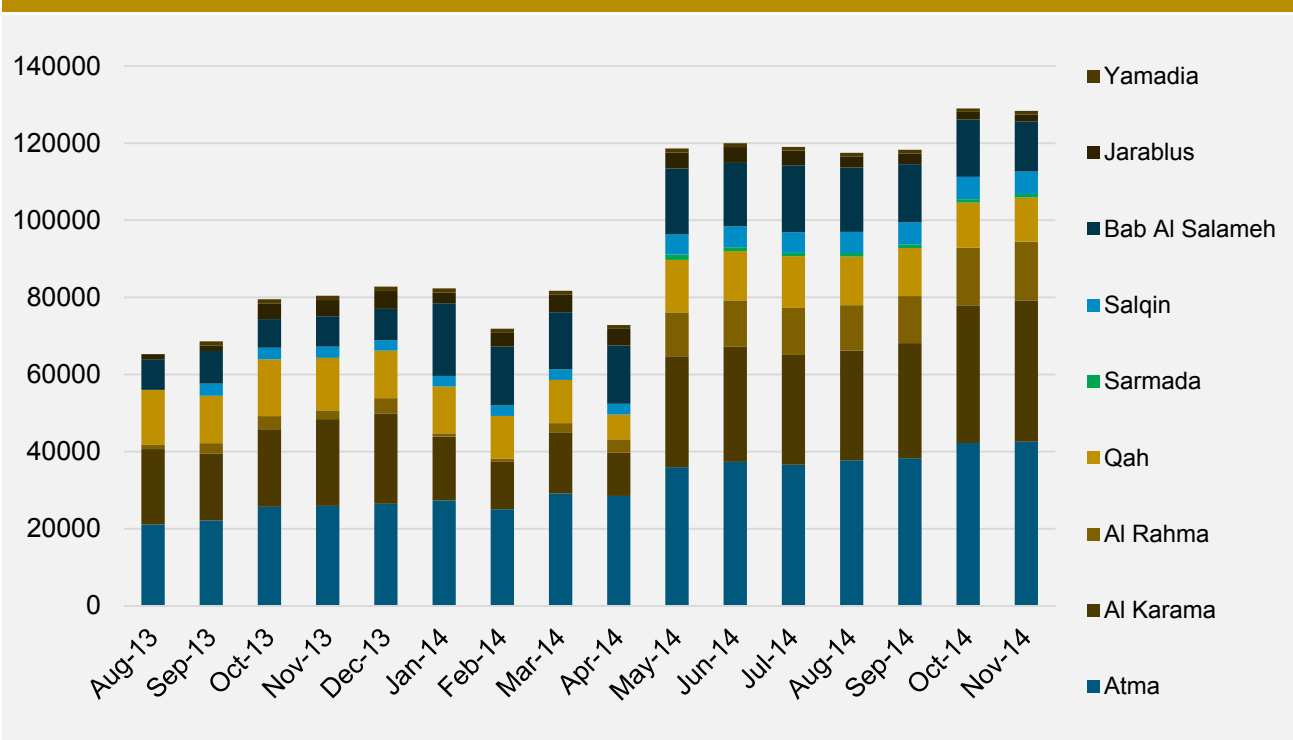
Upon consolidation of the collected data, IMU data analysis team proceeded with data visualization by identifying the required tables, graphs, and maps; which will feed into the analysis of assessment findings. Data visualization was conducted using MS Excel program. IMU GIS Officer produced the maps using Arc GIS software. As for the borders of the camps, ACU’s enumerators worked hard to trace them, and they keep updating any related information.

## DEMOGRAPHICS

IDP numbers were relatively stable with a slight decrease to reach 128,348 IDPs. A total of 660 IDPs moved into Turkey. Some IDPs moved from Bab Al Salameh Camp into new, better organized camps (Bab Al Eman and Sijjo) which were set up by the Turkish NGO I.H.H.

However, the IDP number in Jarablus camps is still going down since a lot of IDPs there are moving into Turkey.

FIGURE 2, POPULATION DEMOGRAPHY IN CAMPS FROM AUGUST 2013 TO NOVEMBER 2014



**TABLE 2, POPULATION IN CAMP CLUSTERS IN NOVEMBER 2014**

Cluster	Atma	Al Karama	Al Rahma	Qah	Sarmada	Salqin	Bab Al Salameh	Jarablus	Yamadia	Total
# of Families	6,436	6,261	2,685	2,147	184	1,233	1,994	374	170	21,484
# of Individuals	42,581	36,638	15,219	11,461	920	5,812	12,966	1,867	884	128,348
# of Male	20,032	17,670	7,584	5,555	458	2,649	6,353	918	450	61,669
# of Female	22,549	18,968	7,635	5,906	462	3,163	6,613	949	424	66,669
# of 0 - 2 Years	5,723	4,486	1,741	1,117	96	756	1,908	245	60	16,132
# of 2 - 6 Years	4,761	4,768	2,078	1,495	80	820	1,402	236	120	15,760
# of 6 - 12 Years	6,422	6,465	2,609	1,884	146	1,163	2,489	356	169	21,703
# of 12 - 18 Years	6,477	6,183	2,535	1,960	138	773	2,269	288	228	20,851
# of 18 - 50 Years	15,978	12,436	5,462	4,348	377	2,038	4,124	680	209	45,652
# of >50 Years	3,515	2,300	794	657	83	262	774	62	98	8,545

The table below refers to cases with disabilities inside the camps:

- A total of 838 IDPs suffer from disabilities (physical disability, mental disability, birth defect, disability due to injury).
- A total of 1,366 women are responsible for supporting their families financially.

The following table gives also the number of unaccompanied minors and elders.

**TABLE 3, VULNERABLE POPULATION IN CAMP CLUSTERS IN NOVEMBER 2014**

Cluster	Atma	Al Karama	Al Rahma	Qah	Sarmada	Salqin	Bab Al Salameh	Jarablus	Yamadia	Total
#of Disables	170	276	155	108	4	88	22	5	10	838
# of Female headed households	410	341	336	122	16	77	19	29	16	1,366
# of Unaccompanied minors	17	12	7	2	0	33	0	7	0	78
#of Unaccompanied elders	49	84	44	5	1	24	0	7	2	216

## HUMANITARIAN SITUATION

This section presents the key findings from the assessment and are structured into two sub-sections. The first one covers the humanitarian situation analysis in the camps and provides updated information about five sectors: food security, health, WASH, education, shelter and NFIs. The second sub-section talks about the humanitarian assistance that was provided to camps inside Syria during November 2014.



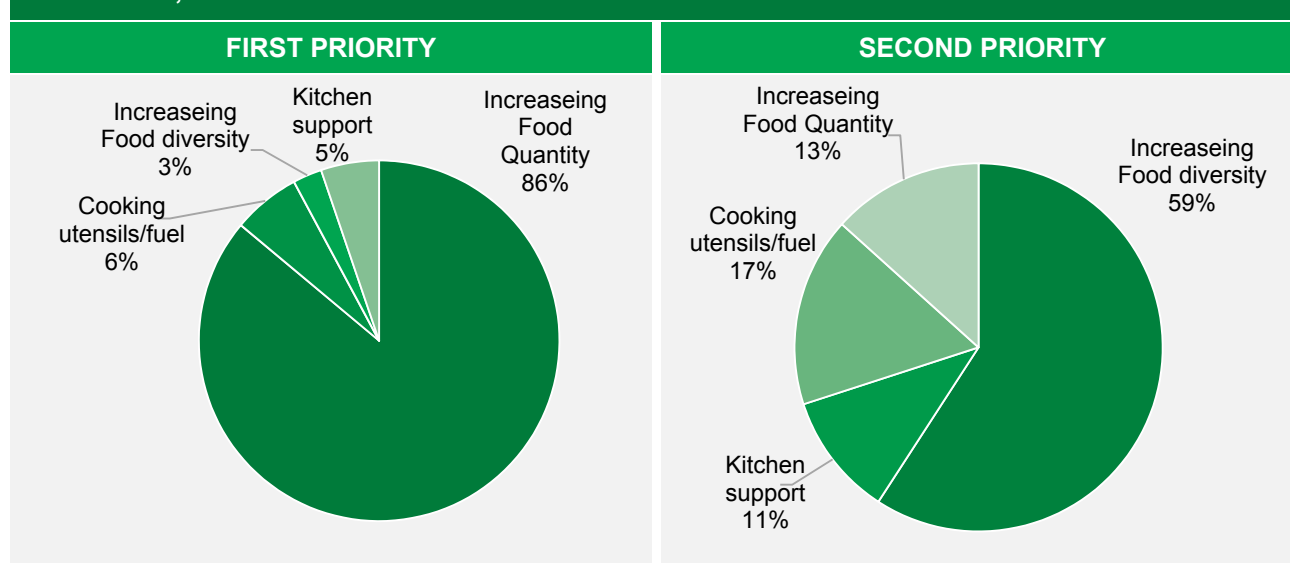
### FOOD SECURITY

Food sector improved significantly during this month due to the distribution of appropriate numbers of food baskets in addition to some other food items and rice bags to many camps. However, Atma Cluster is still suffering from the shortage of bread while Jarablus and Bab Al Salameh clusters completely lack in this item.

Increasing food quantity was still the first priority with 86%, while increasing food diversity was the second priority with 59%.



FIGURE 3, FOOD PRIORITIES FOR IDPS IN ALL CAMP CLUSTERS DURING NOVEMBER 2014



## HEALTH

The health situation is still the same with no significant changes. IDP camps are still suffering from shortages in medical staff, medical points and medical laboratories. Furthermore, there is a notable increase in fever and respiratory diseases because of the bad weather conditions, especially among children with 17% infected.

TABLE 4, DOCTORS AND MEDICAL POINTS

Cluster	Atma	Al Karama	Al Rahma	Qah	Sarmada	Salqin	Bab Al Salameh	Jarablus	Yamadia
# of Doctors	4	7	1	8	0	3	8	3	0
# of Medical points	3	2	1	6	0	2	2	1	1
Individuals/doctor	9,145	4,029	12,225	1,675		2,666	2,170	1,270	
Individuals/medical point	12,193	14,102	12,225	2,234		2,666	8,681	3,810	946

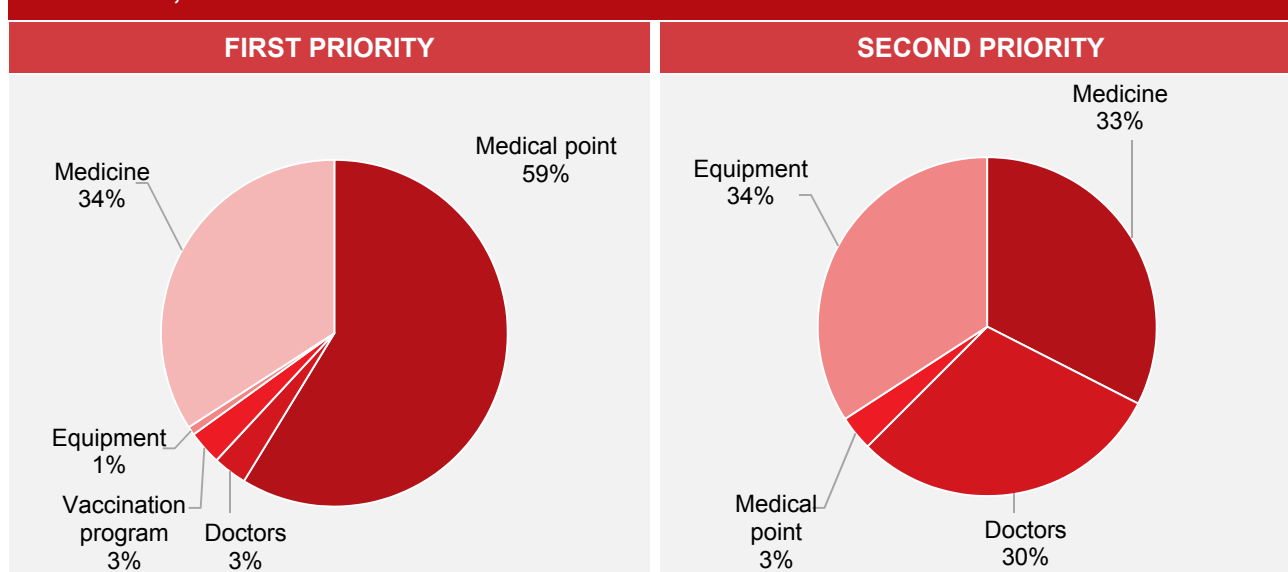
The number of births in the month of November reached 142 births, and there were 10 death cases among clusters, 2 of the deceased were children under 5 years old, and the other 8 were people more than 5 years old.

TABLE 5, BIRTHS AND DEATHS IN CAMP CLUSTERS IN NOVEMBER 2014

Cluster	Atma	Al Karama	Al Rahma	Qah	Sarmada	Salqin	Bab Al Salameh	Jarablus	Yamadia	Total
# of Births	53	21	27	4	0	2	24	8	3	142
# of Deaths under 5 years	0	0	1	0	0	0	0	1	0	2
# of Deaths over 5 years	4	2	0	0	0	0	0	2	0	8

Increasing the number of medical points was an urgent need for 59% of the camps and it came as the first priority, while providing medical equipment was the second priority for 34% of camps.

FIGURE 4, HEALTH PRIORITIES FOR IDPS IN ALL CAMP CLUSTERS IN NOVEMBER 2014



## WATER AND SANITATION AND HYGIENE (WASH)

This sector is on continuous progress due to the intervention of several INGOs assessing and responding to the situation on different levels. Although we have not reached the world-class quality standards for all elements of this sector, the numbers indicate clear improvement in all camps' situations.

**According to Sphere standards, each person needs (15 L) of clean water daily.**

Fortunately, the average of daily water portion per person is sufficient in all clusters; as shown in the table below.

TABLE 6, DAILY WATER SITUATION IN CAMP CLUSTERS DURING NOVEMBER 2014

Cluster	Atma	Al Karama	Al Rahma	Qah	Sarmada	Salqin	Bab Al Salameh	Jarablus	Yamadia
Liters of water trucking /day	308,500	466,700	299,000	94,000	31,200	151,000	60,000	0	0
Liters of water from fixed source/day	463,860	207,000	55,000	175,000	0	0	320,000	20,500	10,000
Liters per person/day	18.1	18.4	23.3	23.5	33.9	26.0	29.3	11.0	11.3

**According to Sphere standards, every (250) persons should have access to at least one onsite water point.**

The survey shows that all the clusters in study have sufficient number of water points as shown in the table below.

TABLE 7, WATER POINTS NUMBERS IN CAMP CLUSTERS IN NOVEMBER 2014

Cluster	Atma	Al Karama	Al Rahma	Qah	Sarmada	Salqin	Bab Al Salameh	Jarablus	Yamadia	Total
# of Onsite water points	345	287	90	165	11	279	100	139	7	1,423
# of Persons/ onsite water point	123	128	169	69	84	21	130	13	126	90

The situation of showers has deteriorated in November, especially in Atma Cluster. A total of 2,129 individuals share only one shower in that cluster, and this is a big number compared to other clusters. In addition, Yamadia camps suffer from complete absence of showers for more than five months.

TABLE 8, NUMBER OF SHOWERS IN CAMP CLUSTERS IN NOVEMBER 2014

Cluster	Atma	Al Karama	Al Rahma	Qah	Sarmada	Salqin	Bab Al Salameh	Jarablus	Yamadia
#of Showers	40	198	178	109	2	103	129	69	0
# of Functional showers	20	125	142	90	2	95	129	69	0
Persons per shower	2,129	293	107	127	460	61	101	27	

**According to Sphere standards, every twenty (20) persons should have access to one proper toilet.**

The numbers shown in the table below are much less than Sphere standards almost in all clusters, except Salqin cluster where number of toilets is sufficient.

TABLE 9, NUMBER OF TOILETS IN CAMP CLUSTERS IN NOVEMBER 2014

Cluster	Atma	Al Karama	Al Rahma	Qah	Sarmada	Salqin	Bab Al Salameh	Jarablus	Yamadia
# of Toilets	657	1,070	507	392	42	451	255	112	28
# of Functional toilets	643	1,000	446	355	42	391	255	112	16
Persons/toilet	66	37	34	32	22	15	51	17	55

**According to Sphere standards, every ten (10) families should be provided with one garbage bin.**

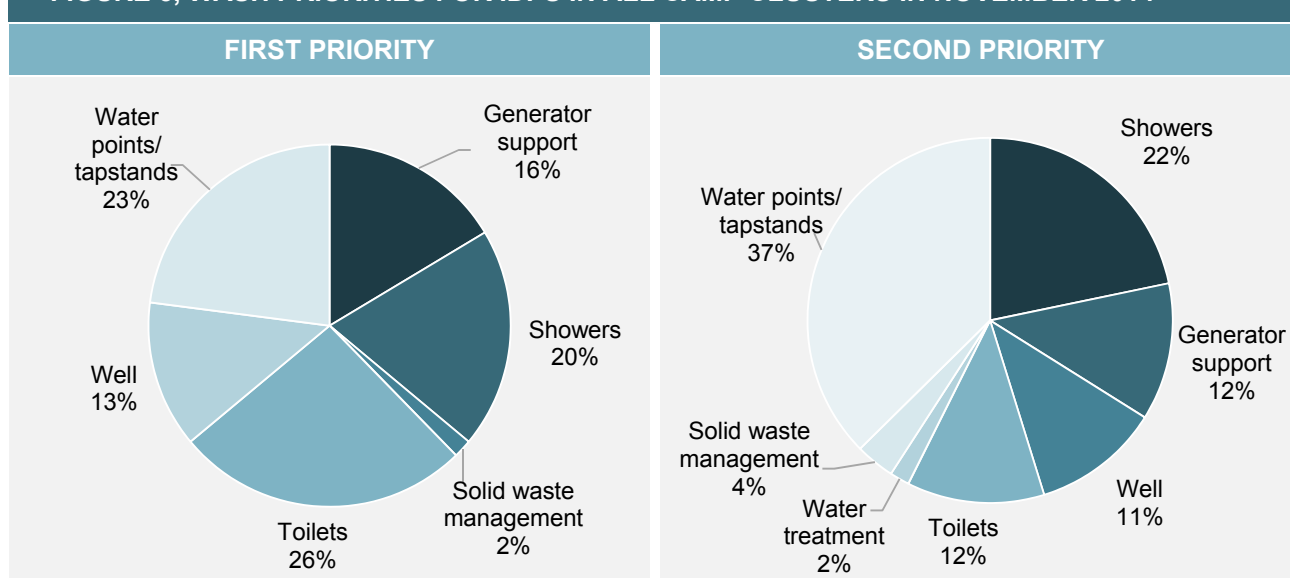
It is obvious that all camps need more garbage bins except Sarmada, Salqin, and Bab Al Salameh clusters where the number of bins is sufficient.

TABLE 10, NUMBER OF GARBAGE BINS IN CAMP CLUSTERS IN NOVEMBER 2014

Cluster	Atma	Al Karama	Al Rahma	Qah	Sarmada	Salqin	Bab Al Salameh	Jarablus	Yamadia
# of Bins	243	62	125	42	16	127	325	11	9
Persons/bin	175	591	122	273	58	46	40	170	98

The first priority for 26% of IDPs is providing additional toilets, while the need for maintaining water points and improving their quality came as the second priority for 37% of the IDPs.

FIGURE 5, WASH PRIORITIES FOR IDPS IN ALL CAMP CLUSTERS IN NOVEMBER 2014



**Waste management:** The vast majority of camps use soak pits in order to manage organic waste. Several INGOs provide assistance by emptying these soak pits and transporting waste to remote areas. However, no information about the disposal of this waste is available.



## EDUCATION

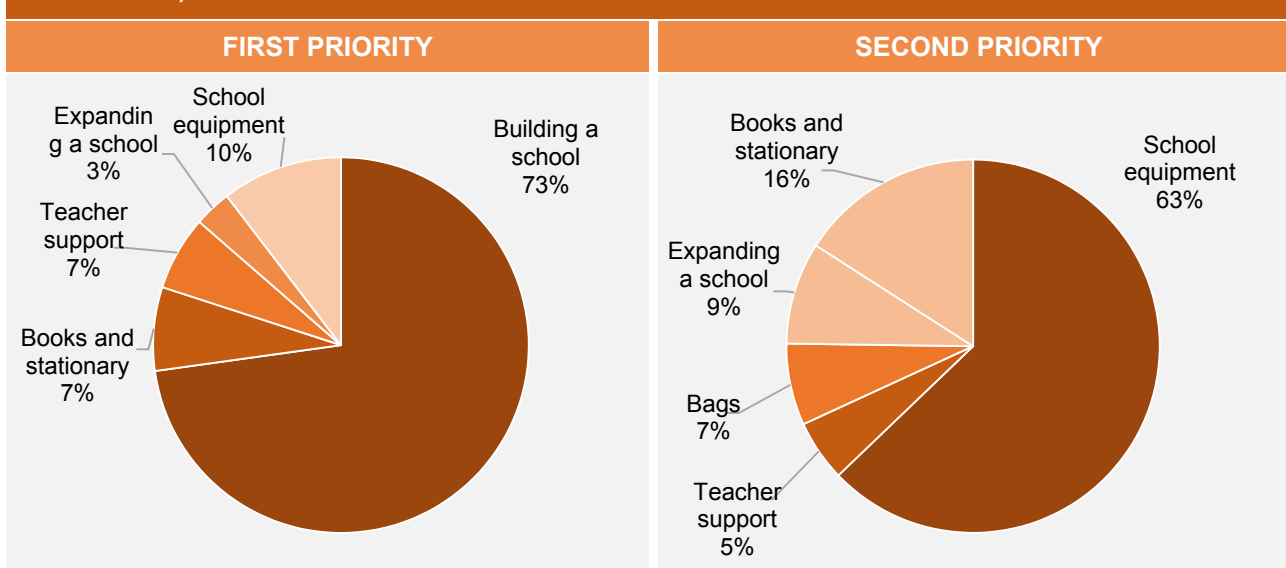
The lack of schools and the increase in the numbers of students out of school is still the main feature for the education sector. Some in-kind aids were distributed to schools in Al Karama and Al Rahma clusters. In addition, “To Learn Campaign” conducted by ACU met the needs for stationaries in some schools.

The first high priority remains the same, building new schools for 73% of camps, while the second priority is to rehabilitate and equip existing schools for 63% of the camps, as it is shown in figure below.

**TABLE 11, NUMBER OF SCHOOLS IN CAMP CLUSTERS IN OCTOBER 2014**

Cluster	Atma	Al Karama	Al Rahma	Qah	Sarmada	Salqin	Bab Al Salameh	Jarablus	Yamadia	Total
# of Schools	6	5	2	6	0	2	1	0	1	23
# of Children (6-12) attending school outside the	1,788	1,135	113	115	0	0	0	0	0	3,151
# of Children (6-12) attending school in the camp	1,930	779	735	740	0	993	1,825	0	175	7,177

**FIGURE 6, EDUCATION PRIORITIES FOR IDPS IN ALL CAMP CLUSTERS IN NOVEMBER 2014**

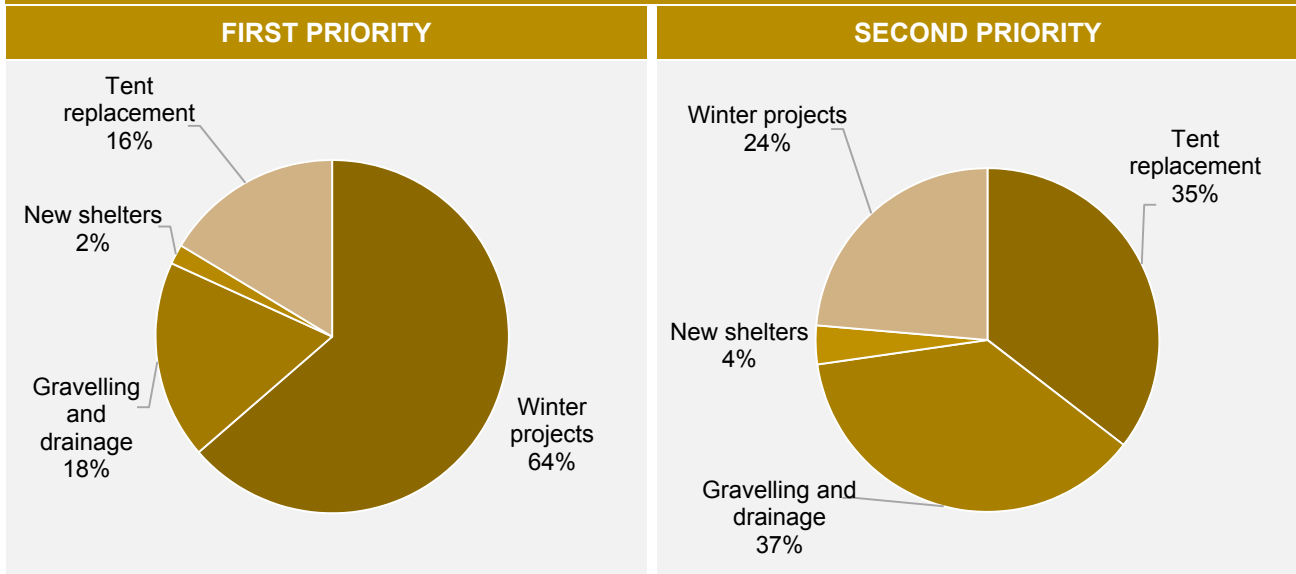


## SHELTER AND NON FOOD ITEMS (NFIS)

The prolonged Syrian crisis and the continuous flow of IDPs from all Syrian governorates into camps in order to escape the daily bombing leads to the continuous need for tent replacement.

Unfortunately, the ongoing appeals for replacing the uninhabitable tents before the advent of winter were not met. Winterization for the cold winter came as the first priority for 64% of the camps. The second priority was for gravelling and drainage with 37%.

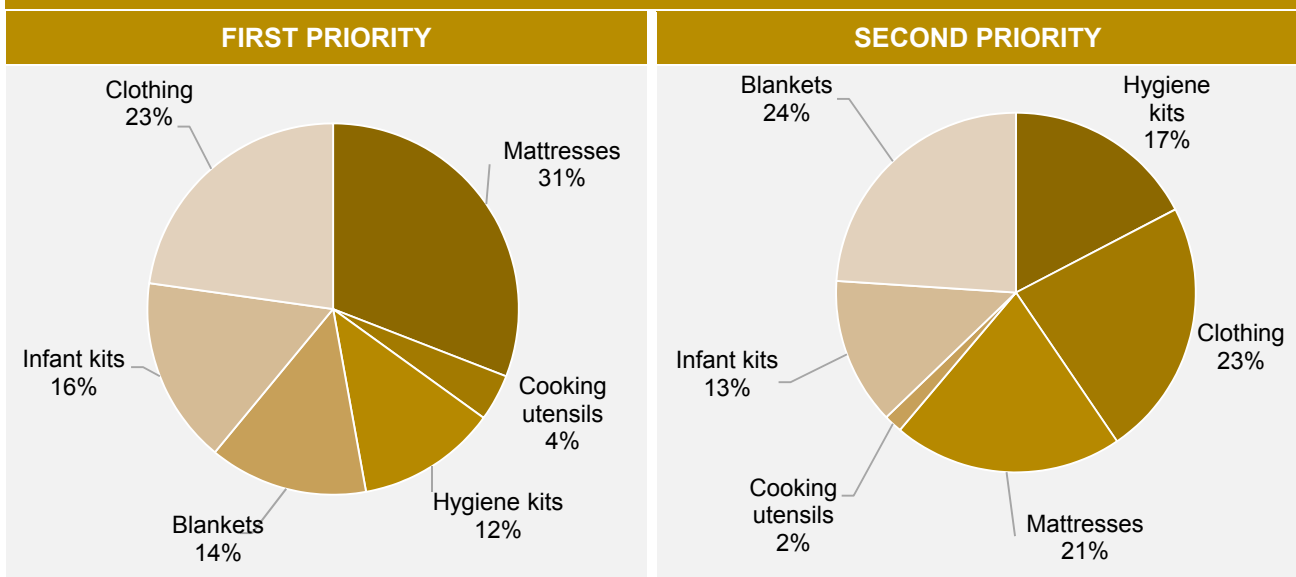
FIGURE 7, SHELTER PRIORITIES IN CAMP CLUSTERS IN NOVEMBER 2014



Many camps were provided with big quantities of hygiene kits as well as women hygiene kits. In addition, some winter needs were provided such as heaters, blankets, plastic sheets, warm clothes and shoes.

Figure 8 shows the top two NFI priorities for the IDPs. Mattresses were ranked first priority for 31% of the camps, while blankets were the second priority for 24% of the camps

FIGURE 8, NFI PRIORITIES FOR IDPS IN ALL CAMP CLUSTERS IN NOVEMBER 2014



## PRIORITIES

The Syrian crisis is currently in its fourth year, and in spite of the large number of humanitarian relief organizations working on the Syrian ground; the first priority remains the same, food, for most IDPs. This result reflects the failure of humanitarian relief activity systems, to facilitate living conditions for Syrian people affected by the crisis.

Education was ranked as the second priority, while health services were ranked as the third priority among IDPs in camps, as shown in the following tables.

**TABLE 12, FIRST PRIORITIES FOR IDPS IN THE CAMPS IN NOVEMBER 2014**

Cluster	Atma	Al Karama	Al Rahma	Qah	Sarmada	Salqin	Bab Al Salameh	Jarablus	Yamadia	Total
Food	21	24	10	2	1	3		4		65
Education	2	8	2	2						14
WASH		1	5	4					1	11
Health		3	1	1	1					6
Shelter	1			1			1			3

**TABLE 13, SECOND PRIORITIES FOR IDPS IN THE CAMPS IN NOVEMBER 2014**

Cluster	Atma	Al Karama	Al Rahma	Qah	Sarmada	Salqin	Bab Al Salameh	Jarablus	Yamadia	Total
Education	12	9	7	1	1	1				31
Shelter	17	3		2					1	23
Food	2	8	4	4			1			19
Health		9	3	3				4		19
WASH		8	4		1	2				15
NFIs	10		2	1						13

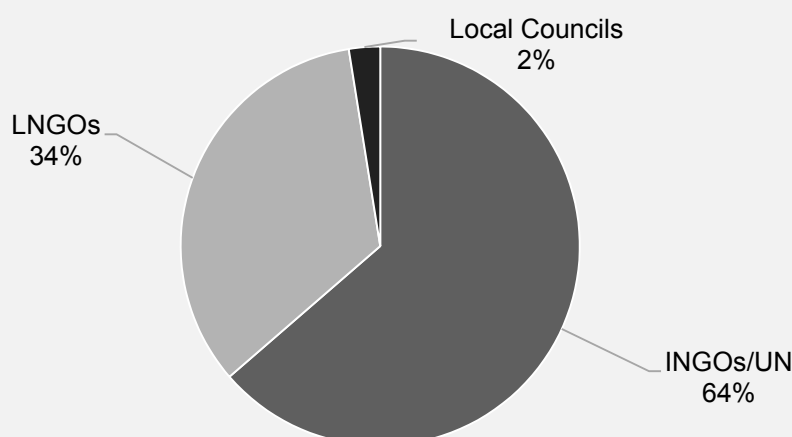
**TABLE 14, THIRD PRIORITIES FOR IDPS IN THE CAMPS IN NOVEMBER 2014**

Cluster	Atma	Al Karama	Al Rahma	Qah	Sarmada	Salqin	Bab Al Salameh	Jarablus	Yamadia	Total
Health	1	15	5	2		3				26
Education	2	8	7	6				3		26
Food	16	2	2	2	1					23
NFIs	12								1	13
Shelter	7	2	3							12
WASH	3	2	2		1		1	1		10

## HUMANITARIAN ACTORS

There were not significant changes during November 2014 for main humanitarian actors who play a big role in providing humanitarian assistance to all camps. International Non-governmental Organizations (INGOs) and the United Nations played the largest part 64% in delivering humanitarian aid to camps, Local Non-governmental Organizations contributed in 34% of aid delivery, while local councils role was limited to 2% among camps. Figure 9 below shows humanitarian actors' proportion during the month of November 2014.

FIGURE 9, HUMANITARIAN ASSISTANCE ACTORS IN CAMP CLUSTERS IN NOVEMBER 2014



## ANNEX I

TABLE 15, CLUSTER INFORMATION IN NOVEMBER 2014

Cluster	Cluster code	Governorate	Governorate Code	District	District Code	Sub-District	Sub-District	Community	Community Code	Count of Camps
Atma	CL0701	Idleb	SY07	Harim	SY0703	Dana	SY070301	Atma	C4130	41
Al Karama	CL0702	Idleb	SY07	Harim	SY0703	Dana	SY070301	Qah	C4131	40
Al Rahma	CL0703	Idleb	SY07	Harim	SY0703	Dana	SY070301	Qah	C4131	23
Qah	CL0704	Idleb	SY07	Harim	SY0703	Dana	SY070301	Qah	C4131	12
Sarmada	CL0705	Idleb	SY07	Harim	SY0703	Dana	SY070301	Sarmada	C4121	3
Salqin	CL0706	Idleb	SY07	Harim	SY0703	Salqin	SY070302	Big Hir Jamus	C4141	4
Bab Al Salameh	CL0201	Aleppo	SY02	A'zaz	SY0204	A'zaz	SY020400	Salama	C1561	3
Jarablus	CL0202	Aleppo	SY02	Jarablus	SY0208	Jarablus	SY020800	Jarablus	C2227	4
Manbij	CL0203	Aleppo	SY02	Menbij	SY0205	Menbij	SY020500	Menbij	C1767	4
Yamadia	CL0601	Lattakia	SY06	Lattakia	SY0600	Rabee'a	SY060002	Qasab	C3506	4
Total										138

## GEOGRAPHICAL CLASSIFICATIONS

<b>Governorate</b>	Highest form of governance below the national level
<b>District</b>	Sub-division of a governorate in which government institutions operate
<b>Sub-district</b>	Sub-division of a district composed of towns and villages
<b>Village</b>	Lowest administrative unit

## ANNEX II

TABLE 16, CLUSTER AND CAMP NAMES AND INFORMATION IN NOVEMBER 2014

ID	Camp Name	Code	Cluster	Status	Collected Data	Families	Individuals
1	Bab Al Salameh	CM020101	Bab Al Salameh	Functional	Yes	1994	12966
2	Bab Al Eman	CM020102	Bab Al Salameh	Functional	No		
3	Bab Al Noor	CM020103	Bab Al Salameh	Functional	No		
4	Jarablus [stadium]	CM020201	Jarablus	Functional	Yes	80	385
5	Jarablus [Al shabeeba]	CM020203	Jarablus	Functional	Yes	39	206
6	Jarablus 4	CM020204	Jarablus	Functional	Yes	160	800
7	Jarablus 5	CM020205	Jarablus	Functional	Yes	95	476
8	Aataa	CM020301	Manbij	Functional	No		
9	Abden	CM020302	Manbij	Functional	No		
10	Om Al Sath	CM020303	Manbij	Functional	No		
11	Zakia	CM020304	Manbij	Functional	No		
12	Shams Al Horia	CM070102	Atma	Functional	Yes	60	475
13	Al Ehssan	CM070103	Atma	Functional	Yes	100	632
14	Al Zohour	CM070104	Atma	Functional	Yes	173	888
15	Al Jazeera	CM070105	Atma	Functional	Yes	384	2163
16	Ehssas1	CM070106	Atma	Functional	Yes	220	1335
17	Ehssas2	CM070107	Atma	Functional	Yes	120	839
18	Abi Al Fidaa	CM070108	Atma	Functional	Yes	120	795
19	Al Amana	CM070109	Atma	Functional	Yes	110	687
20	Al Anfal	CM070110	Atma	Functional	Yes	108	838
21	Al Ansar	CM070111	Atma	Functional	Yes	112	748
22	Al Arabiya	CM070112	Atma	Functional	Yes	625	3697
23	Al Bayan	CM070113	Atma	Functional	Yes	332	2239
24	Al Ber Wa Al Taqwaa	CM070114	Atma	Functional	Yes	45	269
25	Al Faroq Omar	CM070115	Atma	Functional	Yes	150	1110
26	Al Foqaraa Wa Al	CM070116	Atma	Functional	Yes	92	639
27	Al Gaith	CM070117	Atma	Functional	Yes	400	2673
28	Al Hamza	CM070118	Atma	Functional	Yes	79	545
29	Al khalil	CM070119	Atma	Functional	Yes	125	798
30	Al Manseen	CM070120	Atma	Functional	Yes	44	291
31	AL Muhajireen	CM070121	Atma	Functional	Yes	325	2275
32	Al Nada	CM070122	Atma	Functional	Yes	133	884
33	Al Resala	CM070123	Atma	Functional	Yes	103	753
34	Al Yarmook	CM070125	Atma	Functional	Yes	93	663
35	Atchan	CM070126	Atma	Functional	Yes	225	1444
36	Bashaer Al Nasser	CM070127	Atma	Functional	Yes	180	1135
37	Ebado Al Rhman	CM070128	Atma	Functional	Yes	120	855
38	Ebado Allah	CM070129	Atma	Functional	Yes	60	486
39	Om Al Qqora	CM070130	Atma	Functional	Yes	116	790
40	Oriant	CM070131	Atma	Functional	Yes	205	1676
41	Rama Allah	CM070132	Atma	Functional	Yes	170	1120
42	Ryad Al Haramen	CM070133	Atma	Functional	Yes	120	805
43	Shaza Al Horeea	CM070134	Atma	Functional	Yes	135	1001



ID	Camp Name	Code	Cluster	Status	Collected Data	Families	Individuals
44	Al Itehad	CM070135	Atma	Functional	Yes	100	564
45	Al Yamama	CM070136	Atma	Functional	Yes	70	611
46	Reef Hama Al Shamaly	CM070137	Atma	Functional	Yes	220	1511
47	Reef Halap Al Janoby	CM070138	Atma	Functional	Yes	110	1028
48	Al Hiba	CM070139	Atma	Functional	Yes	200	1105
49	Zamzam	CM070140	Atma	Functional	Yes	62	372
50	Al Wahdah	CM070141	Atma	Functional	Yes	140	1016
51	Saedona	CM070142	Atma	Functional	Yes	60	366
52	Al Reh Al Morsalah	CM070143	Atma	Functional	Yes	90	460
53	Al Karama	CM070201	Al Karama	Functional	Yes	545	3247
54	Al Safa Wa Al Marwa	CM070202	Al Karama	Functional	Yes	155	1301
55	Taibah	CM070203	Al Karama	Functional	Yes	220	1892
56	Wa'eetasemo	CM070204	Al Karama	Functional	Yes	405	2218
57	Al Doaa	CM070205	Al Karama	Functional	Yes	303	1856
58	Shams Al Horia	CM070206	Al Karama	Functional	Yes	227	1311
59	Al Aqsa	CM070207	Al Karama	Functional	Yes	120	559
60	Al Faraj	CM070208	Al Karama	Functional	Yes	150	900
61	Al Haq	CM070209	Al Karama	Functional	Yes	132	643
62	Al Farook	CM070210	Al Karama	Functional	Yes	150	920
63	Al Ikhaa	CM070211	Al Karama	Functional	Yes	288	1839
64	Al Shuhada	CM070212	Al Karama	Functional	Yes	112	504
65	Ahl Al Sham	CM070213	Al Karama	Functional	Yes	140	718
66	Al Ahrar	CM070214	Al Karama	Functional	Yes	210	1570
67	Al Aseel	CM070215	Al Karama	Functional	Yes	129	704
68	Al Haramyn	CM070216	Al Karama	Functional	Yes	190	1450
69	Al Sedeq	CM070217	Al Karama	Functional	Yes	43	218
70	Noor Al Mustafa	CM070218	Al Karama	Functional	Yes	221	1084
71	Al Hejaz	CM070219	Al Karama	Functional	Yes	129	645
72	Al Mahabba	CM070220	Al Karama	Functional	Yes	102	645
73	Al Mostaqbal	CM070221	Al Karama	Functional	Yes	153	748
74	Al Shaheed Saleh	CM070222	Al Karama	Functional	Yes	136	681
75	Ataa	CM070223	Al Karama	Functional	Yes	118	704
76	Doaa Al Kuwait Wa Al	CM070224	Al Karama	Functional	Yes	150	935
77	Halap	CM070225	Al Karama	Functional	Yes	90	526
78	Homs	CM070226	Al Karama	Functional	Yes	76	360
79	Reef Hama Al Mankop	CM070227	Al Karama	Functional	Yes	97	508
80	Salah Al Dien	CM070228	Al Karama	Functional	Yes	203	955
81	Al Rajaa	CM070229	Al Karama	Functional	Yes	151	849
82	Al Manarah	CM070230	Al Karama	Functional	Yes	135	756
83	Al Rawda	CM070231	Al Karama	Functional	Yes	85	452
84	Atfal Al Ghad	CM070232	Al Karama	Functional	Yes	94	443
85	Fadl Allah	CM070233	Al Karama	Functional	Yes	110	538
86	Noor AL Shaam	CM070234	Al Karama	Functional	Yes	90	521
87	Yasmin Al Sham	CM070235	Al Karama	Unstable	Yes		
88	Zahret Al Madaaen	CM070236	Al Karama	Functional	Yes	129	623
89	Noor Al Mostaqbal	CM070237	Al Karama	Functional	Yes	163	1003
90	Salah Al Dien2	CM070238	Al Karama	Functional	Yes	174	932
91	Mogamaa Al taaqwaa	CM070239	Al Karama	Functional	Yes	42	241
92	Al Ikhlas	CM070240	Al Karama	Functional	Yes	94	639

ID	Camp Name	Code	Cluster	Status	Collected Data	Families	Individuals
93	Al Madinah Al	CM070301	Al Rahma	Functional	Yes	95	551
94	Al Nour	CM070302	Al Rahma	Functional	Yes	140	967
95	Al Rahma	CM070303	Al Rahma	Functional	Yes	135	667
96	Al Waleed	CM070304	Al Rahma	Functional	Yes	104	638
97	Al Muatesm	CM070305	Al Rahma	Functional	Yes	72	320
98	Leeajlecom	CM070306	Al Rahma	Functional	Yes	176	1064
99	Al Fardoos	CM070307	Al Rahma	Functional	Yes	150	991
100	Al Intesar	CM070308	Al Rahma	Functional	Yes	78	528
101	Al Nwaeer	CM070309	Al Rahma	Functional	Yes	257	1542
102	Al Aasi	CM070310	Al Rahma	Functional	Yes	120	635
103	Al Anssar	CM070311	Al Rahma	Functional	Yes	103	471
104	Al Immam	CM070312	Al Rahma	Functional	Yes	160	789
105	Al Qora Al Mankoba	CM070313	Al Rahma	Functional	Yes	110	603
106	Atfal Shuhada Al	CM070314	Al Rahma	Functional	Yes	75	454
107	Hibat Allah	CM070315	Al Rahma	Functional	Yes	114	665
108	Dar Al Aytam	CM070316	Al Rahma	Functional	Yes	123	580
109	Shabab Al Khayr	CM070317	Al Rahma	Functional	Yes	204	1127
110	Toeor Al Jana	CM070318	Al Rahma	Functional	Yes	90	442
111	Abo Bkr Alseedeq	CM070319	Al Rahma	Functional	Yes	125	824
112	Al Mohajerin	CM070320	Al Rahma	Functional	Yes	85	462
113	Al Qadisia	CM070321	Al Rahma	Functional	Yes	117	564
114	Bany Omayya	CM070322	Al Rahma	Functional	Yes	67	344
115	Al Arbayeen	CM070323	Al Rahma	Functional	Yes	75	433
116	Al Jolan	CM070401	Qah	Functional	Yes	235	1353
117	Al Nasser	CM070403	Qah	Functional	Yes	255	1606
118	Al Salam	CM070404	Qah	Functional	Yes	345	1889
119	Al Midan	CM070405	Qah	Functional	Yes	188	1040
120	Bab Al Hawa Upper	CM070406	Qah	Functional	Yes	97	479
121	Qah	CM070407	Qah	Functional	Yes	294	1415
122	Al Forkan	CM070408	Qah	Functional	Yes	245	1363
123	Dar Al Reayah	CM070409	Qah	Functional	Yes	198	973
124	Al Majed	CM070410	Qah	Functional	Yes	89	394
125	Al Tawheed	CM070411	Qah	Functional	Yes	40	178
126	Al khalij Al Arabi	CM070412	Qah	Functional	Yes	78	406
127	Sham Al Izza	CM070413	Qah	Functional	Yes	83	365
128	Al Dana	CM070501	Sarmada	Functional	Yes	40	166
129	Al Shahbba	CM070502	Sarmada	Functional	Yes	95	519
130	Areeha	CM070503	Sarmada	Functional	Yes	49	235
131	Ayidoun	CM070601	Salqin	Functional	Yes	662	2766
132	Kadimon	CM070602	Salqin	Functional	Yes	393	2145
133	Sameddon	CM070603	Salqin	Functional	Yes	178	901
134	Omhat Al Moomenin	CM070604	Salqin	Functional	No		
135	Yamadia	CM060101	Yamadia	Functional	Yes	170	884
136	Kherbat Al Joz	CM060102	Yamadia	Unstable	Yes		
137	Manhale	CM060103	Yamadia	Unstable	Yes		
138	Zaytona	CM060104	Yamadia	Unstable	Yes		

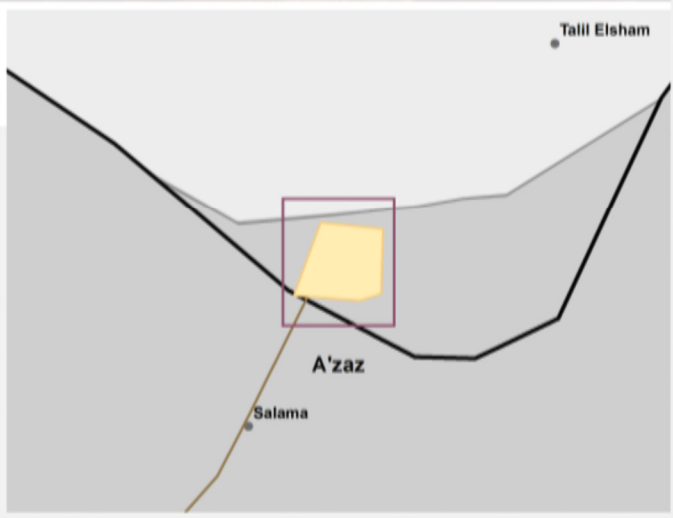
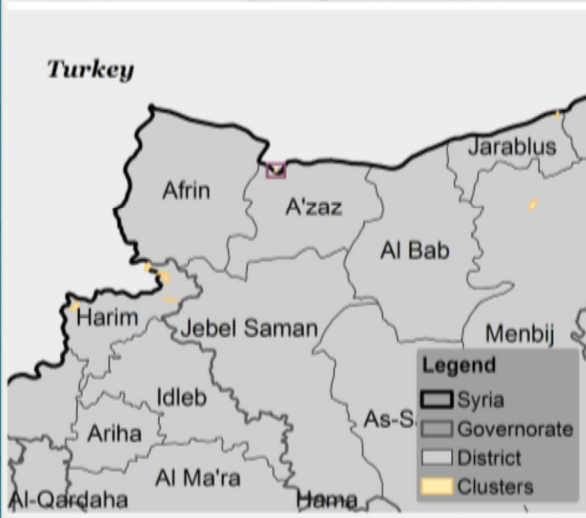
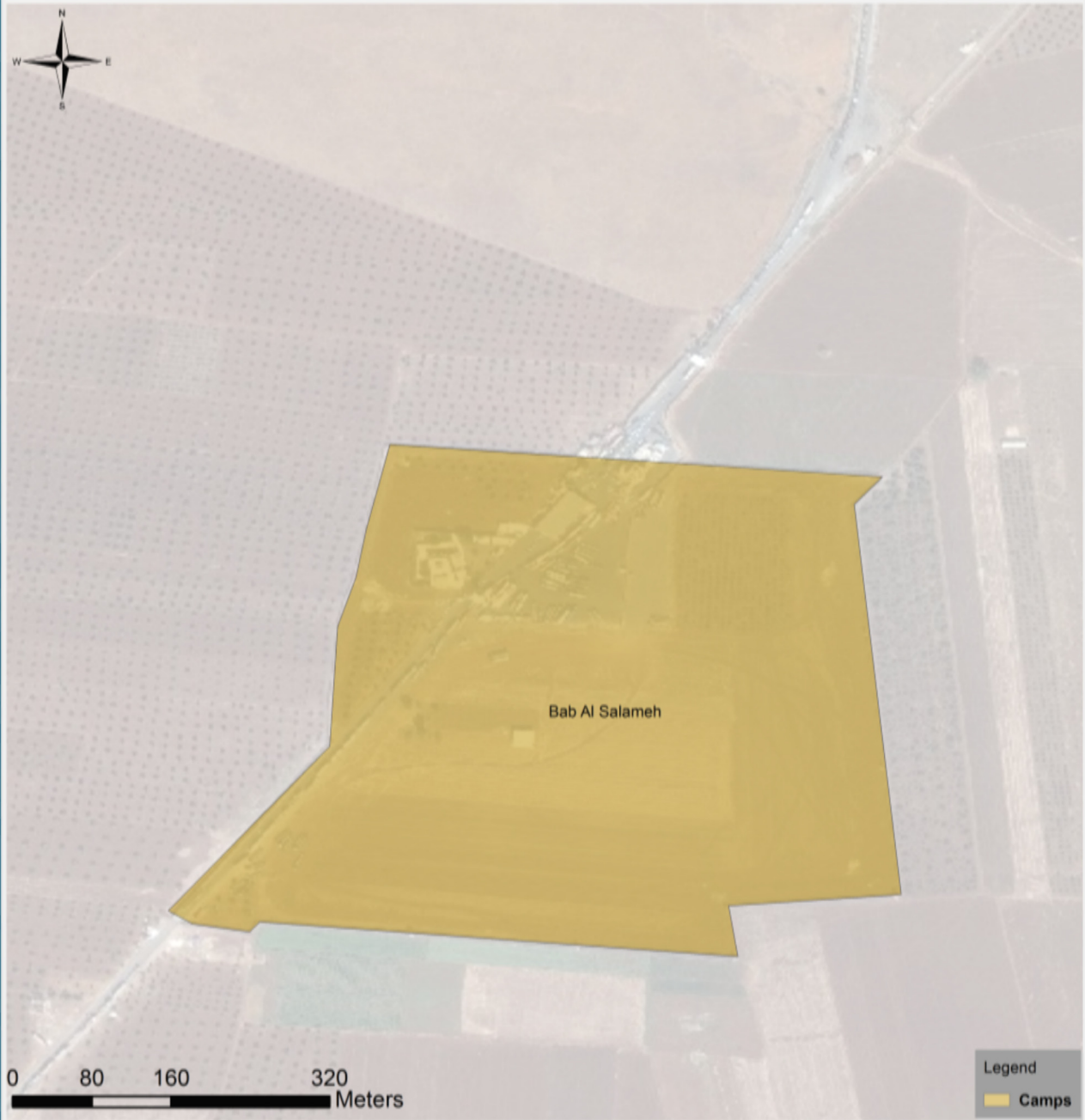
**ANNEX III**

**IDP Camp monitoring report: Bab Al Salameh Cluster**

CMR-03-00 5-Oct-2014



وحدة تنسيق الدعم  
ASSISTANCE COORDINATION UNIT

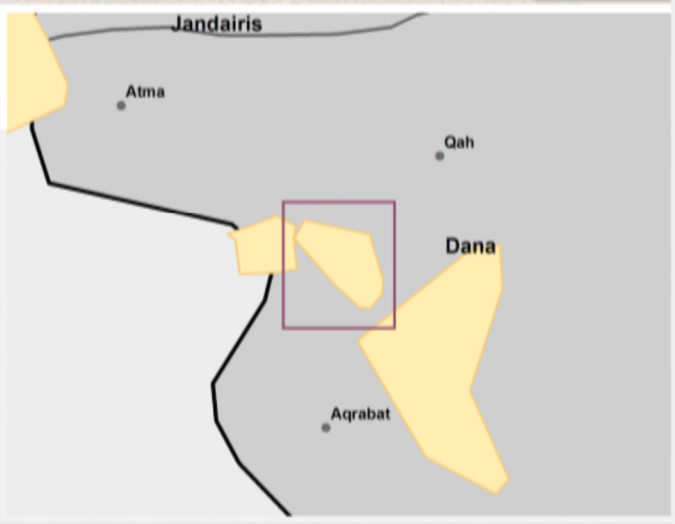
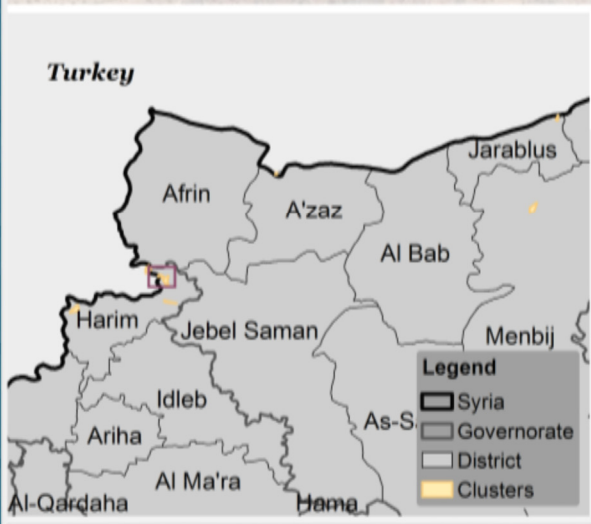
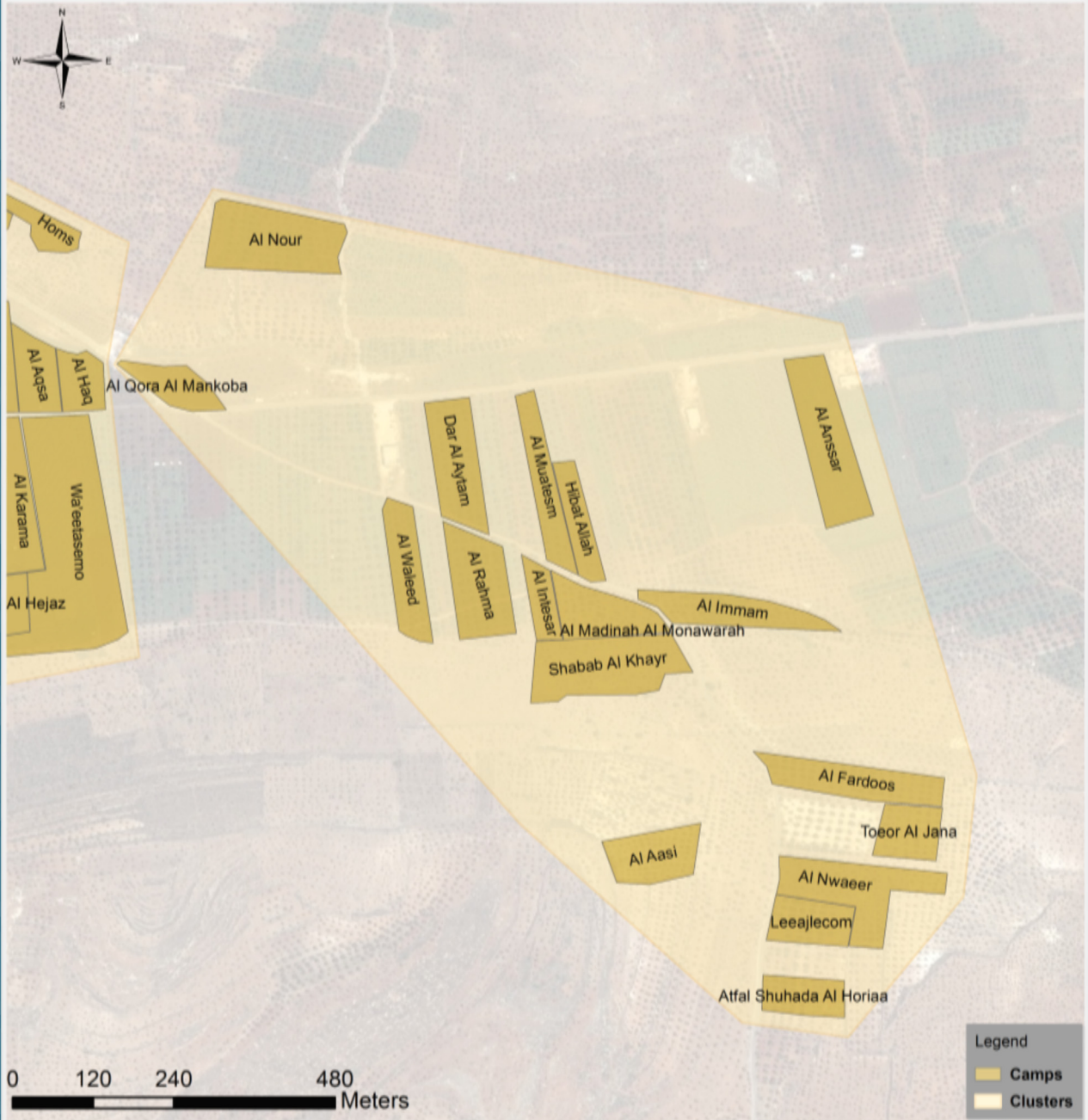


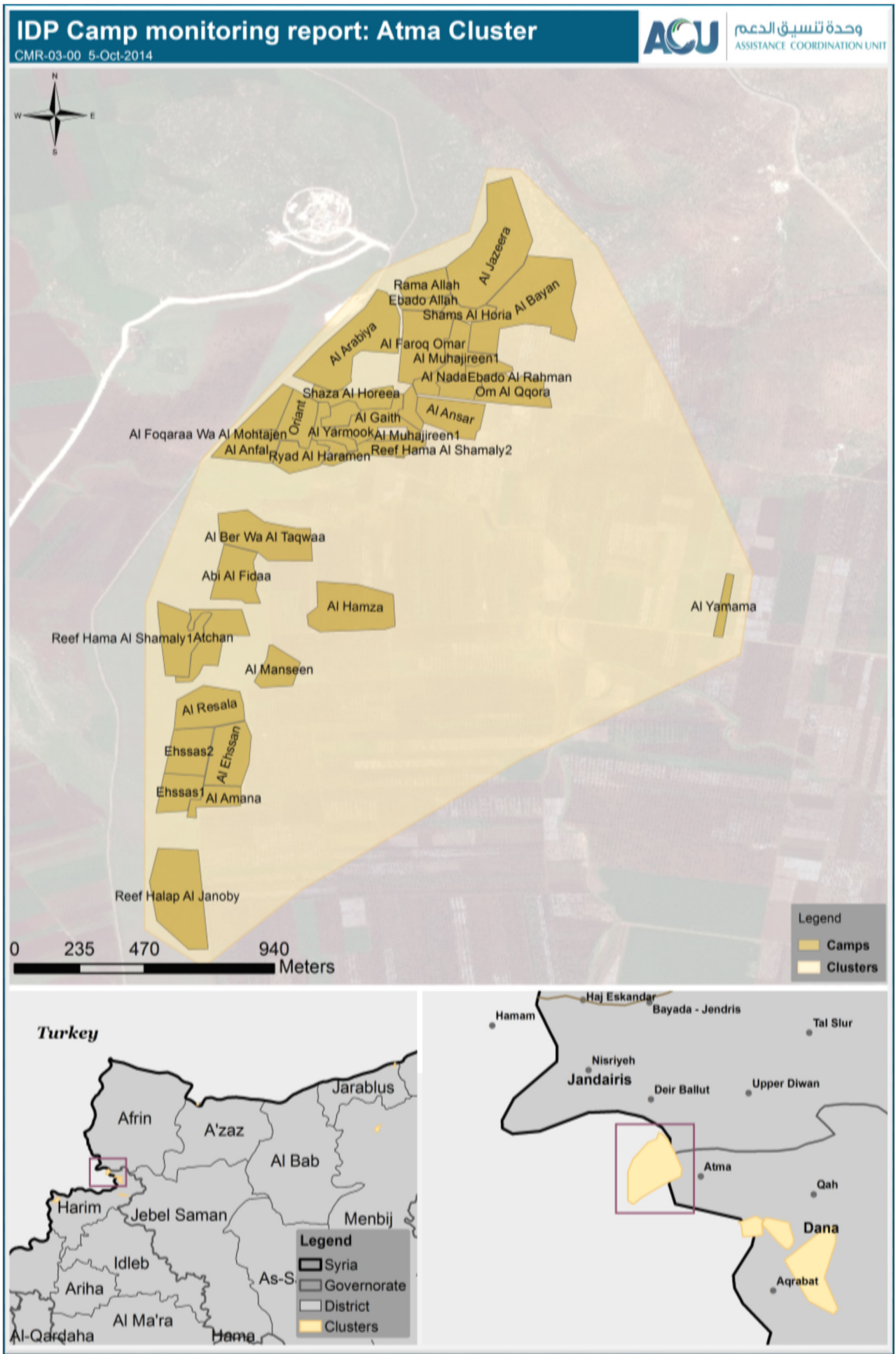
# IDP Camp monitoring report: Al Rahma Cluster

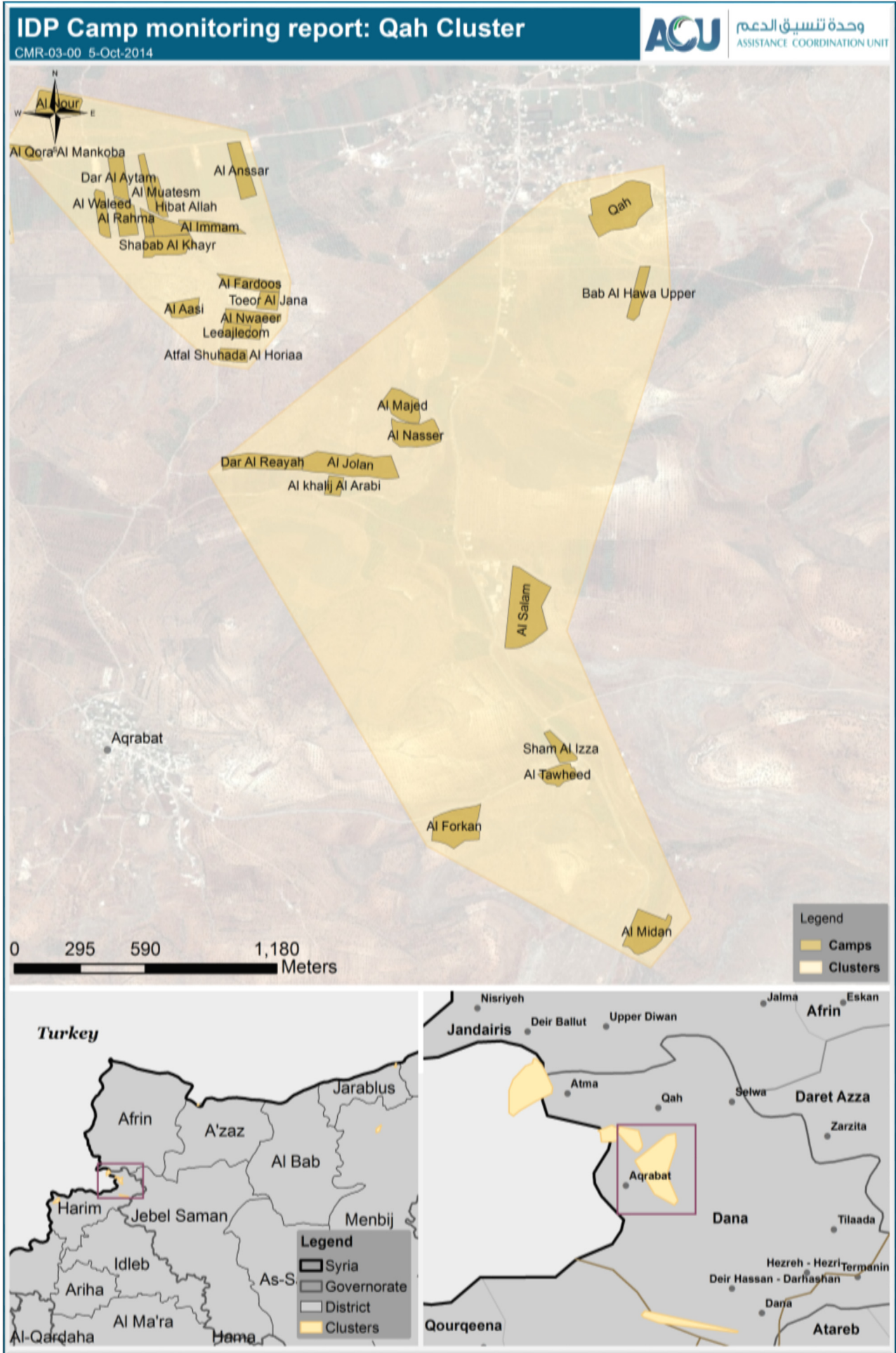
CMR-03-00 5-Oct-2014



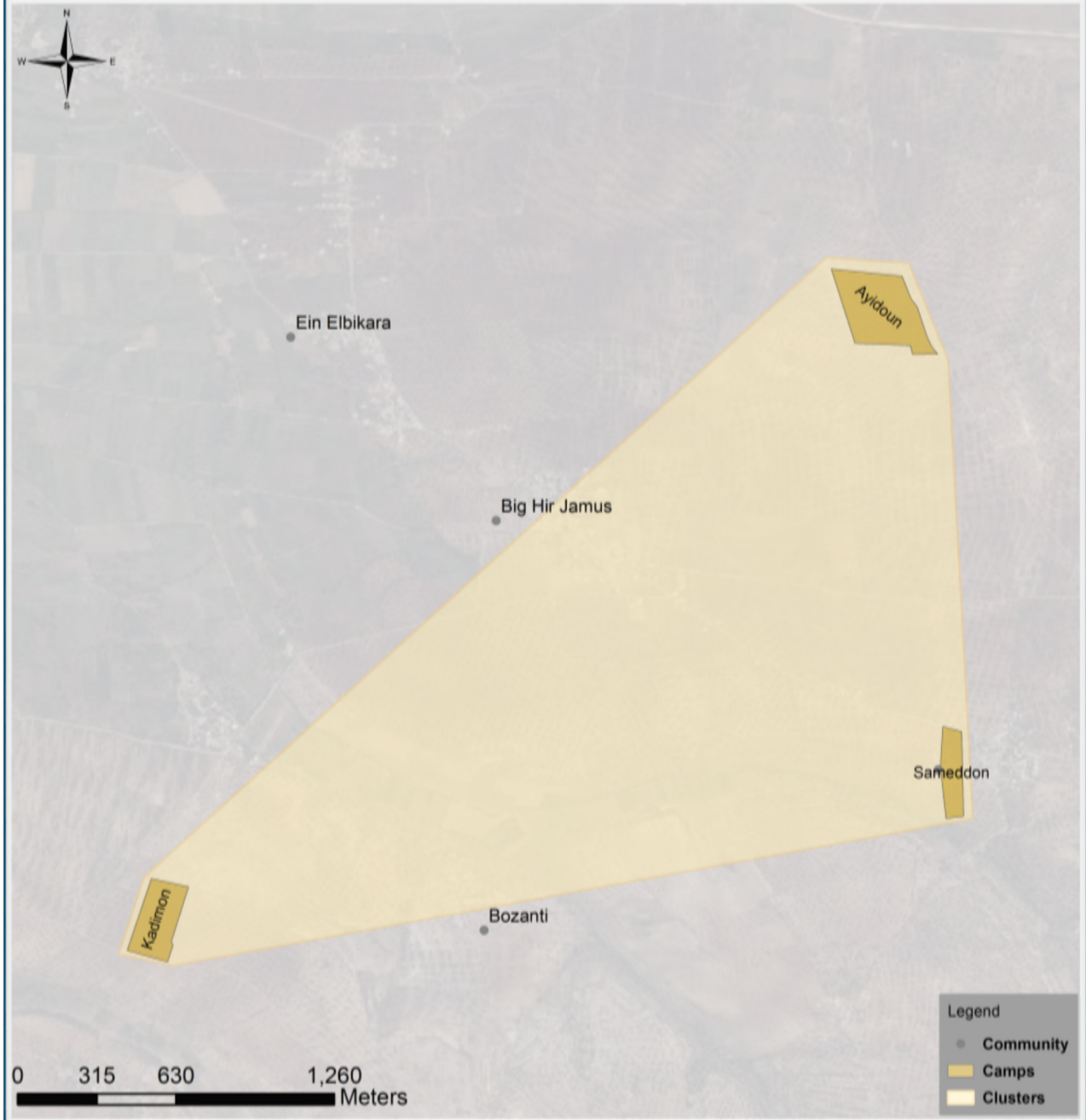
وحدة تنسيق الدعم  
ASSISTANCE COORDINATION UNIT

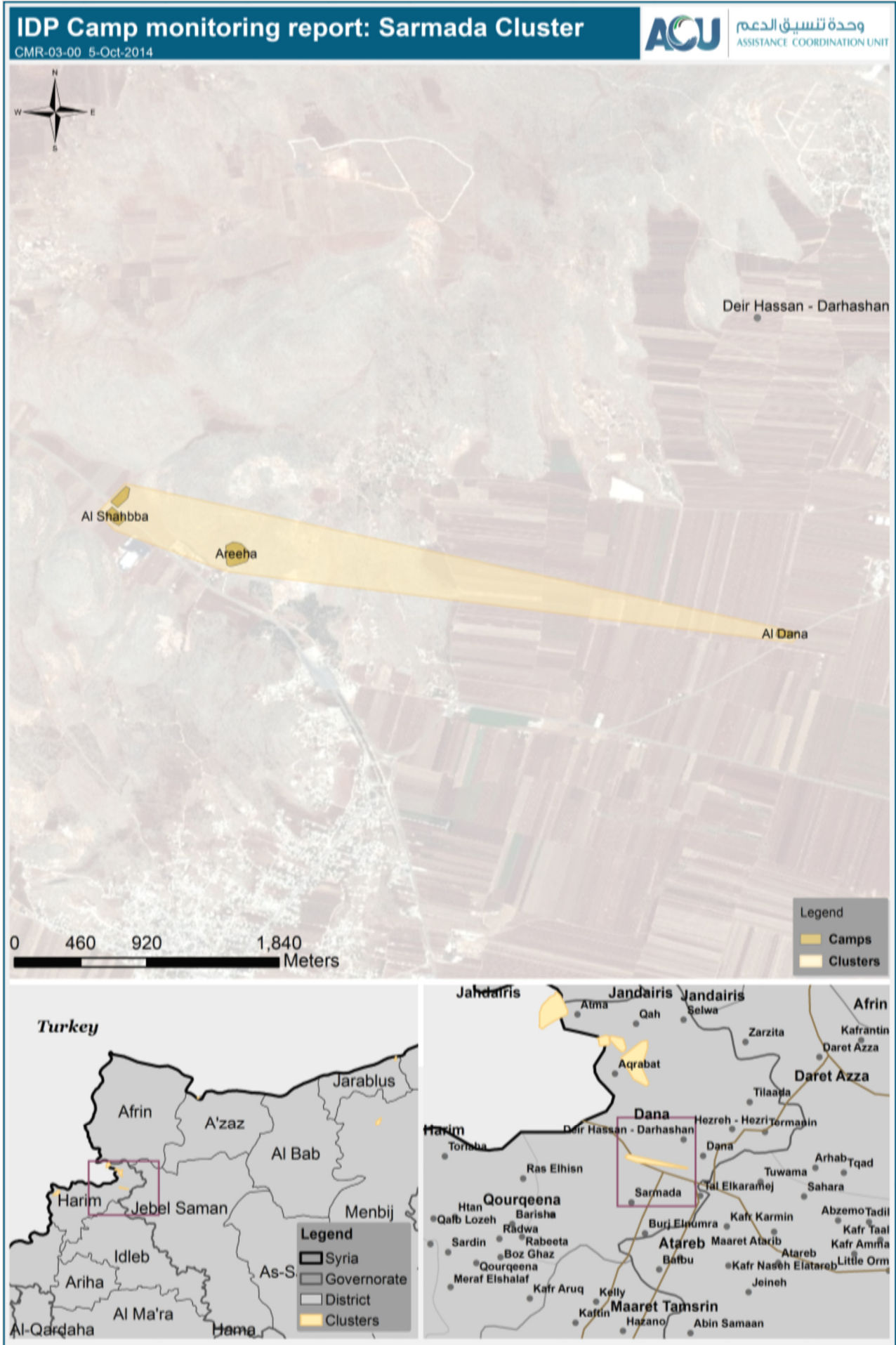






**IDP Camp monitoring report: Salqin Cluster**  **وحدة تنسيق الدعم**  
 ASSISTANCE COORDINATION UNIT







# IDP Camp monitoring report: Jarablus Cluster

CMR-03-00 5-Oct-2014



وحدة تنسيق الدعم  
ASSISTANCE COORDINATION UNIT

