



IMU
INFORMATION
MANAGEMENT
UNIT

ANNUAL REPORT

2021- 2022

THE PRODUCTS OF THE INFORMATION
MANAGEMENT UNIT (IMU)







ASSISTANCE COORDINATION UNIT (ACU)

Assistance Coordination Unit (ACU) is a local Syrian non-government, non-political, non-profit institution established in 2012. ACU focuses on maximizing the impact of assistance delivered to the Syrian people by coordinating the efforts of donors, implementing agencies, and community representatives. ACU has many local and international partners with more than 2,200 memorandums of understanding that have been signed.

ACU aims to strengthen the decision-making capacity of the actors responding to the Syrian crisis by collecting, analyzing, and sharing information on the humanitarian situation in Syria. To this end, ACU's Information Management Unit (IMU) established a network of enumerators recruited depending on specific criteria such as education level, association with information sources, and the ability to work and communicate under various conditions. IMU collects data that other active international actors find difficult to reach and publishes different types of information products such as Assessments, Thematic Reports, Maps, Flash Reports, Dynamic Monitoring (DYNAMO), and Interactive Studies.



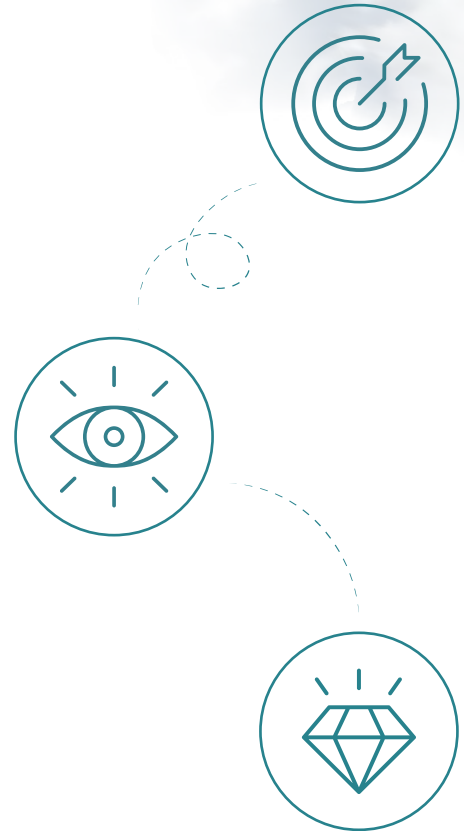
Mission

We work for a decent life for all Syrians by managing and coordinating information and support.

Vision

To be a leading institution for planning and supporting decision-making for humanitarian aid, early recovery, and sustainable development of Syria.

Values



Transparency



Independence



Professionalism



Humanity



Impartiality



Accountability



Partnership

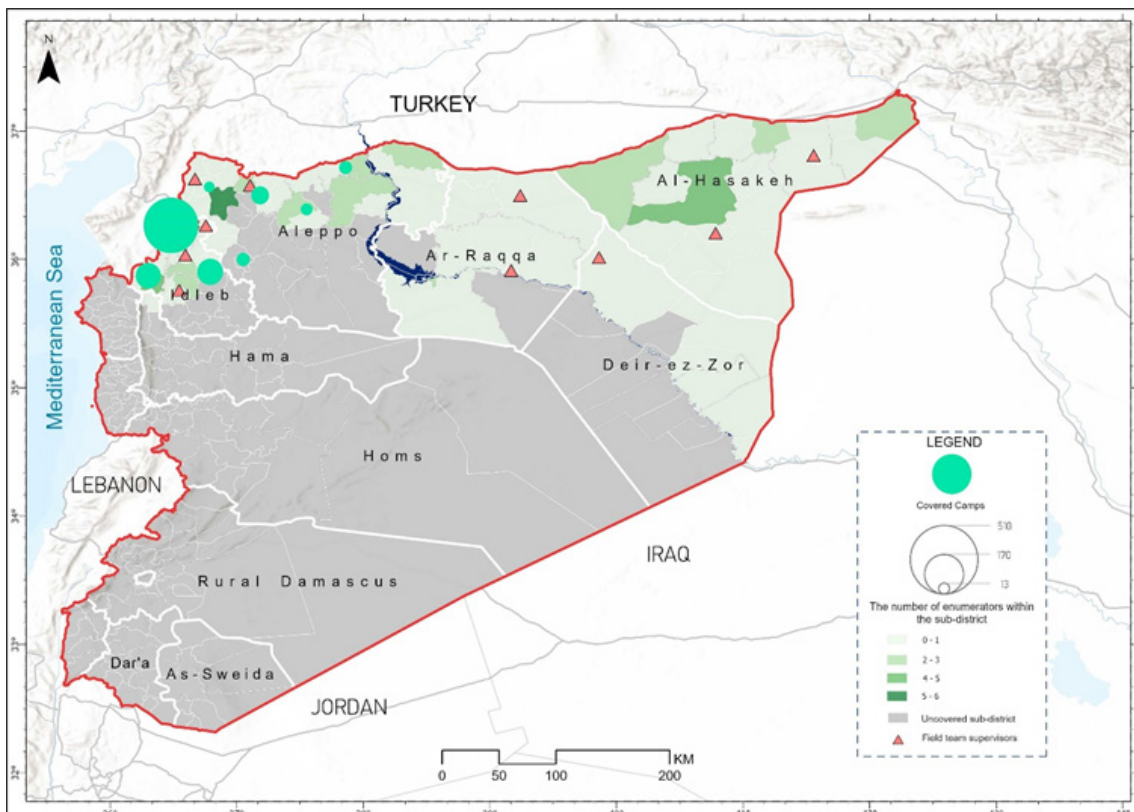


THE INFORMATION MANAGEMENT UNIT (IMU)

The IMU is a key department within ACU. It is the central source of information for many stakeholders like donors, UN agencies, and international and local organizations concerned with and operating within Syria. Since its establishment in 2012, the IMU has produced reports in a responsive, innovative, and effective way to shed light on the humanitarian situation in the war-affected areas inside Syria. The IMU issues various information products updated periodically depending on the data collected by a network of qualified enumerators spread across Syria. IMU publishes its products in two languages, mainly Arabic and English, and as per need, in Turkish.

IMU Coverage

The IMU field network of enumerators consists of 101 enumerators covering 68 sub-districts. Thirty-four out of them are camp enumerators who cover the camps of Aleppo and Idlib governorates. IMU coverage includes out of regime control areas in North Syria. IMU field enumerators are ACU full-time staff. They have substantial experience in data collection, and their main task is to collect primary data in all sectors. The Field enumerators are trained before each data collection, as shown on the map.



THEMATIC REPORTS

These reports assess the situation of a specific sector, such as Education, FSL, Health, etc., in terms of needs, priorities, and recommendations in areas outside the Syrian regime’s control.

Schools in Syria for the Academic Year 2021-2022

The IMU issued the 7th edition of its annual report entitled “Schools in Syria Report” in April 2022. The report sheds light on the education sector’s status in areas outside the Syrian regime’s control, highlighting the growing needs and priorities of schools and students impacted by the ongoing war. The data collection process involved collaboration with 17 humanitarian organizations from the education cluster.

This report edition covers 3,992 schools in 71 sub-districts across six governorates. A total of 28,462 surveys were collected, with 24,560 conducted with students, parents, teachers, and school principals. The report provides detailed information on operational school buildings, water, sanitation and hygiene, school supplies, schooling stages, school days, curricula, certificates, students’ and teachers’ needs, psychological support, students with disabilities, policies and procedures governing the educational process, non-operational schools, methods and measures to prevent COVID-19, as well as priorities and recommendations. The report was issued in **Arabic** and **English**.



Schools in Northern Syria Camps for the Academic Year 2021-2022

The IMU of ACU issued the 5th edition of the report focused on the situation of the schools in northern Syria camps published on an annual basis. The report aims to obtain comprehensive information on the reality of education and the changes, developments, and challenges facing the educational process that arise due to the ongoing war. Data for this report were collected through interviews with various key informants and perception surveys with students, parents, teachers, and school principals to reflect the educational situation from different perspectives.

The IMU enumerators visited 1,407 camps in Idleb and Aleppo governorates in northwest Syria for this study. The study found that only 189 camps have schools, with the number of schools there reaching 202 schools, most of which suffer from a shortage of supplies and school equipment. The report was released in August 2022 in Arabic and English.



Winterization Needs in NWS Camps

The sixth edition of the report provides insights into the situation of displacement camps in Northwest Syria, focusing on the number of IDPs and their age groups, the types of shelters they are residing in, the difficulties faced by camp residents last winter, their critical needs for the upcoming winter, and the top priority requirements.

In addition, the study puts forth recommendations for humanitarian actors, outlining the most urgent and life-saving responses to be provided based on the study's findings.

For this edition, the report covers 680 camps across 30 sub-districts in Aleppo and Idlib governorates, offering a comprehensive understanding of the conditions and challenges IDPs face in these regions. The report was released in October 2021 in Arabic and English.



Substance Abuse and Addiction in Northern Syria

Before the war, Syria served as a transit route for narcotic substances from Afghanistan, Iran, and Lebanon to the Arab Gulf countries. Post-2011, the use of Captagon pills among fighters increased, providing courage and ecstasy on battlefronts. However, the primary involvement in narcotic production and trade lies with the Syrian regime and its loyal militias, controlling cultivation and manufacturing areas and exporting substances through regime-controlled ports and borders. Reports indicate that shipments seized worldwide originated from Syria with legal cover from regime authorities. The regime benefits by forming cells in areas beyond its control, gathering military intelligence through drug-affiliated networks.

To finance its militias, the regime turns a blind eye to their illicit activities, expanding narcotic cultivation, manufacturing, and trade. On October 7, 2021, Interpol reintegrated the Syrian Regime Government into its system, enabling information exchange suspended since 2012.



Housing Complexes in Northwestern Syria

Since the urgent shelter process provides only the minimum amount of roofed space and the necessary material aid, the stricken family often has to look for alternative means to increase or improve the roofed area available to them, which prompted many IDPs to try to improve the displacement environment by converting their tents into cement rooms. Additionally, some humanitarian organizations and donors built several housing complexes. Considering that these complexes began to turn into new cities and towns, it was necessary to conduct a study clarifying the nature of these complexes in terms of location, construction, law, and population. Through this report, ACU wanted to spotlight these complexes and show how those buildings have been built, their legal aspect, the quality and quantity of services delivered there, the demographic information, and more.

The study found 117 new housing complexes in northwestern Syria, with the number of new buildings exceeding 40 buildings. 79% (93 complexes) in Idlib province and 21% (24 complexes) in Aleppo province. The report was released in April 2022 in Arabic and English.



English



Arabic



The City Profile reports

ACU generated two city/area profile reports presenting multi-sectoral information in two areas in NS.

1. Eastern Deir Ez-Zor Governorate:

This report focuses on the eastern Deir ez-Zor governorate, shedding light on the areas outside the regime’s control currently governed by the Syrian Democratic Forces (SDF). The report examines Deir ez-Zor governorate from three distinct levels. At the first level, it provides comprehensive information about the entire governorate, which serves as the foundation for the sections covering the clans, the oil and gas wells, and the campaigns for spreading Shiism. The second level concentrates on the eastern regions of Deir ez-Zor governorate that are outside the regime’s control. This section encompasses demographic information, economic reality, and existing job opportunities. It also examines the provision of essential services within these areas, including medical care, civil defense, and bakeries. The report presents neighborhood-specific information for six major cities within the governorate at the third level. The report was released in August 2022 in Arabic and English.



2. Northern Ar-Arraqa and Al-Hasakeh governorates:

This report focuses on the area controlled by the National Army, comprising Ras Al-Ain, Tell Abiad, and Suluk sub-districts. It presents data on two levels: 1) Information on the entire area, covering demographics, tribes, basic services, governance, and economic realities. 2) Detailed information on the centers of the three main sub-districts, aiming to monitor residents’ access to available service facilities. ACU aims to draw attention to this region, urging donors and actors to assist its inhabitants. The report was released in August 2022 in Arabic and English.



Field Development Reports (Weekly Reports)

These reports offer a comprehensive overview of the situation on the ground, encompassing incident reports occurring within camps and communities, changes in controlling forces, ongoing conflicts, violations, casualties, and breach locations of the ceasefire. The information is presented in an infographic format, combining narratives, charts, and maps to convey security-related details effectively.

To further enrich the reporting experience, efforts are underway to develop an interactive report. This interactive format aims to provide cumulative updates in a more engaging and compelling manner, enhancing the accessibility and understanding of the security-related information presented. These reports are released on a weekly basis in Arabic and English.



English



Arabic



ONLINE INTERACTIVE STUDIES

The Market Price Index (MPI) in Syria

The Market Price Index (MPI) is an online PowerBI interactive monthly study issued by the IMU. This study serves as a crucial tool for monitoring the availability and price fluctuations of essential market items in areas outside the regime’s control in Syria over a 12-month period, presented in both USD and Syrian Pounds. Data for this study is collected from six governates, providing comprehensive coverage.

The MPI tracks more than 46 critical commodities, including basic food items, fuel, construction materials, solar systems, house rentals, water, and electricity, among others, in the key markets of NS (non-regime controlled areas). This study has been consistently issued since January 2017 and is publicly accessible on the ACU website. Additionally, it is periodically shared with relevant stakeholders involved in humanitarian efforts. The MPI report plays a vital role in enabling informed decision-making and facilitating efficient resource allocation in humanitarian endeavors. By closely monitoring market dynamics, it empowers humanitarian organizations to respond effectively to the evolving needs of the population in these areas. The study is released in Arabic and English.



English



Arabic

IDP CAMPS Monitoring DASHBOARD

This is an online PowerBI interactive study produced monthly by the IMU to monitor the humanitarian situation in camps in Idlib and Aleppo governorates. Its primary focus is to shed light on the needs of IDPs and the range of services provided within the camps. Various sectors, including Health, WASH, Nutrition, Education, Shelter, sources of income, and demographic information, are covered in-depth, along with a detailed analysis of the priority needs of IDPs.

Moreover, the study incorporates essential statistics on the influx and outflow of individuals within the camps, as well as notable incidents that occurred during the data collection period. This IDP Camps Monitoring Dashboard has been continuously produced since January 2016 and is publicly accessible on the ACU website. Additionally, it is periodically shared with relevant parties involved in humanitarian efforts. The study serves as a critical tool, providing valuable insights to inform and guide humanitarian response strategies. It plays a significant role in promoting coordination among stakeholders, ensuring that assistance is efficiently delivered to those in dire need. The study is produced in Arabic and English.



English



Arabic

Population Movement in Northern Syria

This study provides regular monthly updates on the population of numerous cities, towns, and over 744 camps situated outside the control of the regime in Syria. The IMU enumerators diligently monitor the population in these communities and camps, as well as the influx of new IDPs arriving and the returnees departing from these locations. The study encompasses various vital aspects, including the total population size and gender ratio, the count of both longstanding and recently displaced IDPs, along with details about their types of shelters. Additionally, it documents the number of individuals who have left these communities and the reasons for their departure. Furthermore, the study highlights the statistics on returnees from the previous month and their most pressing needs.

Moreover, the study offers valuable insights into the availability and evaluation of basic services in these areas. It identifies key decision-makers and primary service providers who play pivotal roles in delivering essential assistance to the affected population. The study can be accessed by referring to the following links, Arabic and English.



English



Arabic



ONLINE INTERACTIVE MAPS

Schools in Syria 7th Edition Interactive Map for the Academic Year 2021-2022

The IMU designed this interactive map as an annex to the 7th edition of the Schools in Syria Report. While the narrative report presents information at the district level, the interactive map displays information at the community level through several interactive maps that cover general information, teachers and students, school priorities, and recommendations.

The study for the seventh edition of the report included 3,902 schools located in 72 sub-districts. Among these schools, 3,598 were operational, and 394 were non-operational. The 7th edition of the map was released in Arabic and English.

Schools in Syria Camps 5th Edition Interactive Map for the Academic Year 2021-2022

The IMU designed this interactive map as an annex to the 7th edition of the Schools in Syria Report. While the narrative report presents information at the district level, the interactive map displays information at the community level through several interactive maps that cover general information, teachers and students, school priorities, and recommendations.

The study for the seventh edition of the report included 3,902 schools located in 72 sub-districts. Among these schools, 3,598 were operational, and 394 were non-operational. The 7th edition of the map was released in Arabic and English.



English



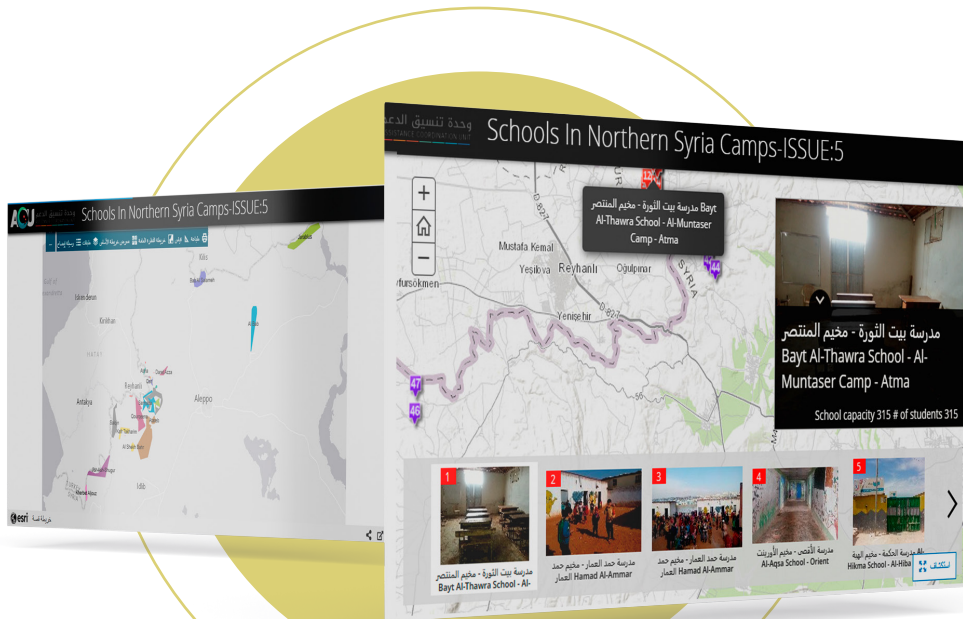
Arabic



English



Arabic



Video Reports

Schools in Syria

The video summarizes the 7th edition of "Schools in Syria Report." The video presents the report's most important findings and recommendations in four minutes. The video was produced in July 2022 in English with Arabic subtitles.



Schools in Camps

The video presents a brief of the findings related to all themes of the 5th edition of the "Schools in Camps" report and the study's recommendations. The video was released in August 2022 in English with Arabic subtitles.



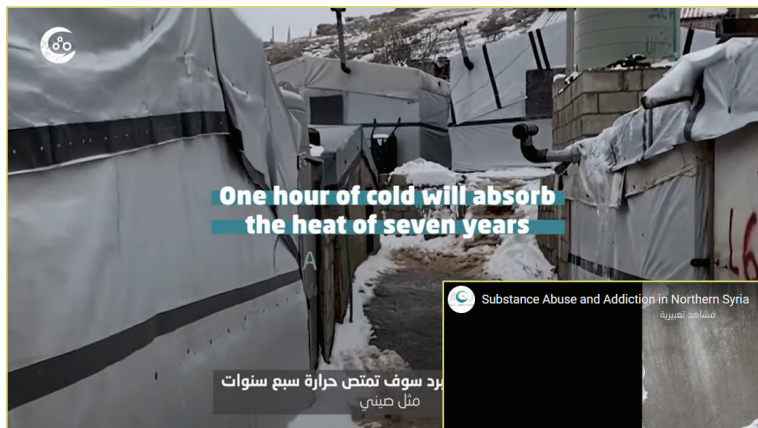
Winterization Needs in NWS Camps

The video briefly presents the findings of the 6th edition of the "Schools in Camps" report and the study's recommendations. The video was released in October 2021 in English with Arabic subtitles.



Substance Abuse and Addiction in Northern Syria

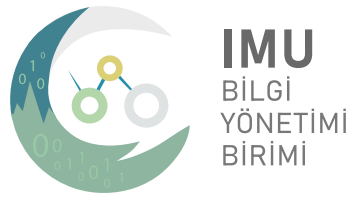
This video presents a brief on the findings of the report. It is worth mentioning that ACU, Midad, Hope Revival, and the interior ministry at the Syrian Interim Government have launched a campaign of anti-drug after the release of this report. The video was released in April 2022 in Arabic and with English subtitles.



A black and white photograph of children in a refugee camp. In the foreground, several children are visible, some making peace signs. The background shows a row of simple, rectangular buildings, likely temporary housing. The sky is bright with a single cloud. The overall tone is somber but hopeful.

WE WORK FOR A
DECENT LIFE FOR
ALL SYRIANS





ANNUAL REPORT 2022 -2021

THE PRODUCTS OF THE INFORMATION
MANAGEMENT UNIT (IMU)



ANNUAL REPORT 2022 -2021

THE PRODUCTS OF THE INFORMATION
MANAGEMENT UNIT (IMU)



A report by the Information Management Unit (IMU)
at Assistance Coordination Unit (ACU)

