

April, 2022

## IDP's Camps Monitoring Study

The IDPs camps monitoring interactive study includes information about the situation of IDPs in northern Syria camps, with regard to sources of income, the sectors of Health, WASH, Nutrition, Education, Shelter, in addition to some demographic information.

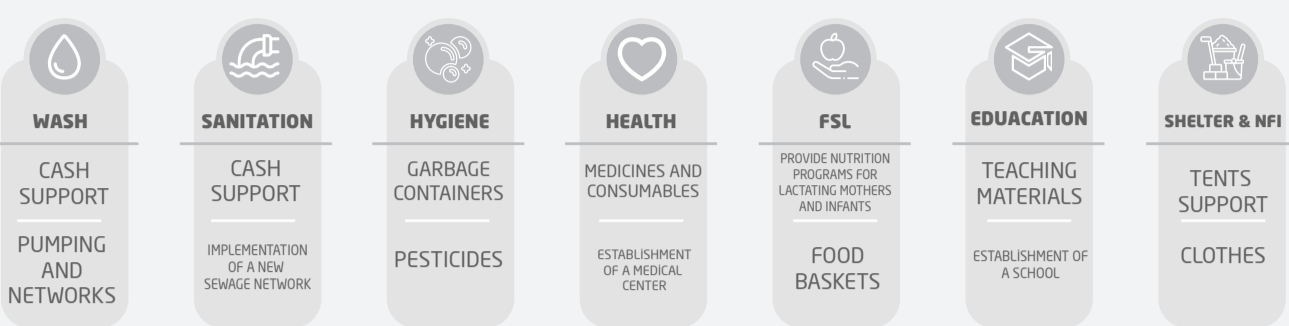
Individuals per cluster

**826,207**

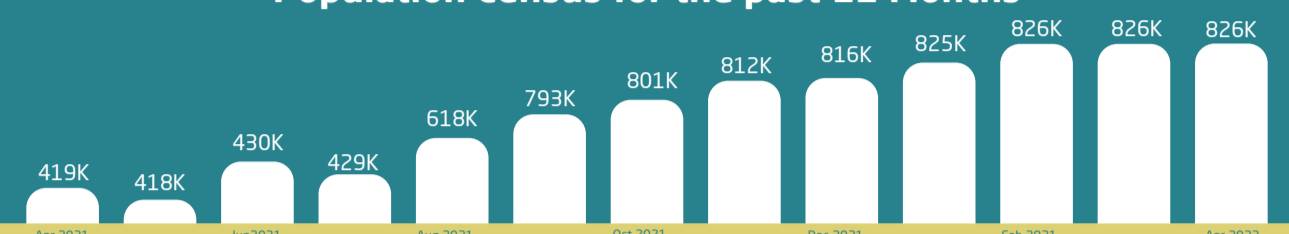
Camps per cluster

**598**

### Camps Priorities for The Month of April 2022



### Population Census for the past 12 Months



### Population by Gender



### Population by Region



### Do IDPs pay fees to live in the camp?



**825**

Families left without shelter in the assessed camp

## Health

### Medical staff in the camps

**39**

Midwives

**139**

Nurses

**112**

Doctors

### Is there a medical point inside the camp?

#572

#26

No Yes

### Assessing health services during the past month

**4%**

Good

**70%**

Average

**26%**

Bad

### Diseases by month

**363**

Acute diarrhea

**116**

Leishmaniasis

**2,439**

Chronic respiratory diseases

**1,706**

Hypertension

**2,755**

Diabetes

## WASH

### The mechanisms of water delivery



Tankers

**115,568**



Water Network

**50,313**

### The average share of drinking water



#451

More than 20 liters per day



#81

Between 15-20 liters per day

### The sewage system in tents, caravans, and build rooms

**73,160**

Regular sewage system

**78,869**

Cesspools

**13,950**

None/ Out in the open

### Water sterilization

Yes **#514**

NO **#84**

### Regular Garbage Removal



Yes

**#557**

No

**#41**

### Disposal mechanism of domestic waste after removal its transport outside the camp

**16**

None

**17**

Sanitary landfill

**149**

Outside the sub-district

**408**

Burning

### Reasons for public bathrooms' non-functionality

#57

The cabin was damaged

#27

Failures in piping

#18

Failures in watertaps

#16

Water not available

#7

Waste accumulation

## FSL

### People provided with meals

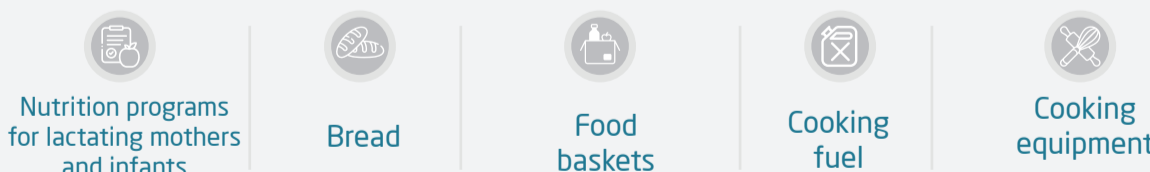
Bab Al Salameh: **23,199**

### Need for food baskets vs. distributor

Baskets the camp needs: **153,167**

Baskets distributed monthly: **129,980**

### Priorities



## Education

### Teachers by Gender

Female **48.78%**

Male **51.22%**

### Formal and volunteer teachers in camps

Formal Teachers: **#2,089**

Volunteer Teachers: **#304**

### Students who attend schools

Inside the Camp

Primary

**46,398**

Lower Secondary

**6,373**

Upper Secondary

**590**

Outside the Camp

**37,590**

**17,777**

**6,441**

## Shelter & NFI

Tents that need rain insulators: **7,754**

Tents that need insulators: **2,810**

Tents that need repairs: **3,092**

**57,422** Built Rooms

**9,899** Caravans

**99,240** Tents

