

March, 2022

IDP's Camps Monitoring Study

The IDPs camps monitoring interactive study includes information about the situation of IDPs in northern Syria camps, with regard to sources of income, the sectors of Health, WASH, Nutrition, Education, Shelter, in addition to some demographic information.

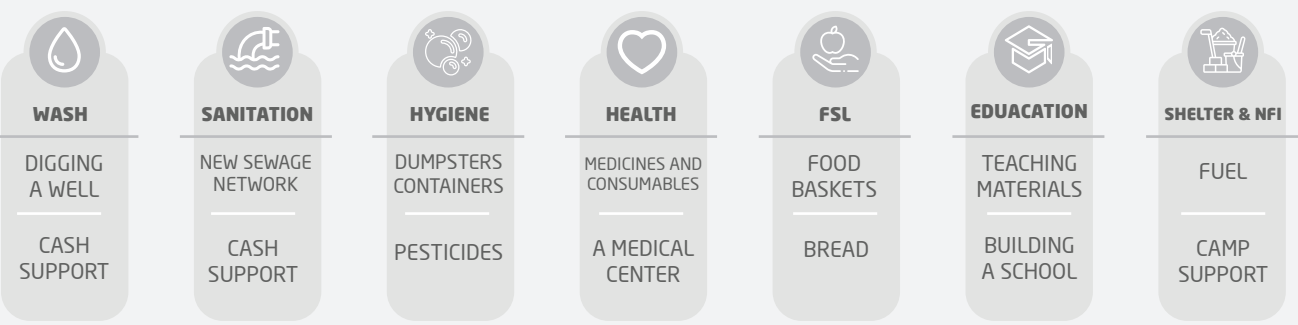
Individuals per cluster

825,876

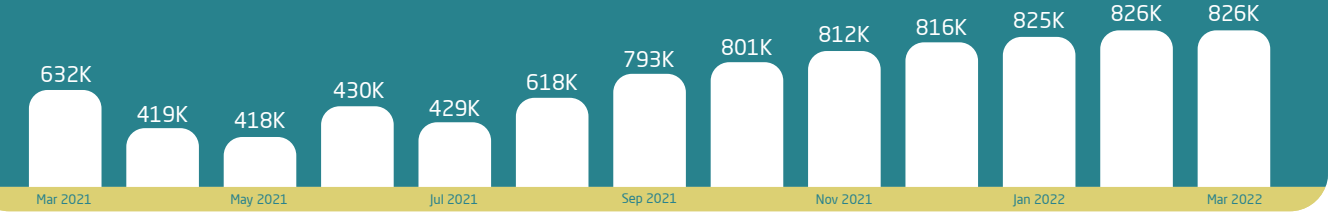
Camps per cluster

598

Camps Priorities for The Month of March 2022



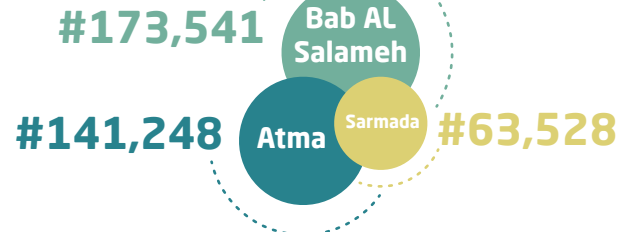
Population Census for the past 12 Months



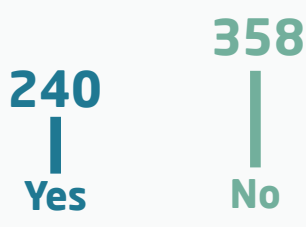
Population by Gender



Population by Region



Do IDPs pay fees to live in the camp?



869

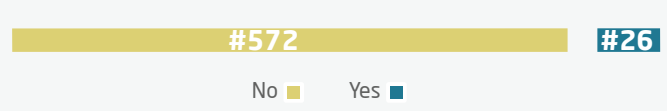
Families left without shelter in the assessed camp

Health

Medical staff in the camps



Is there a medical point inside the camp?



Assessing health services during the past month

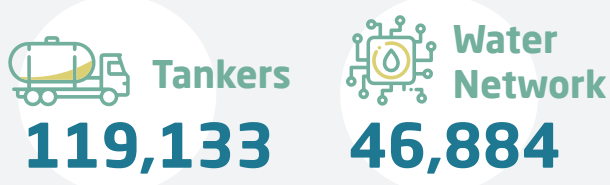


Diseases by month

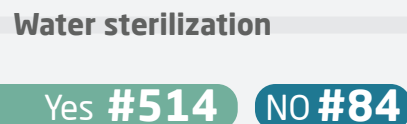
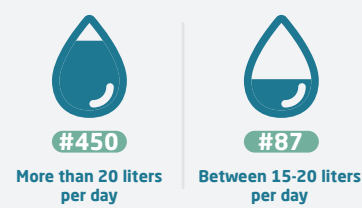


WASH

The mechanisms of water delivery



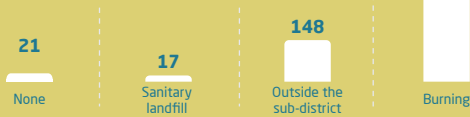
The average share of drinking water



Regular Garbage Removal



Disposal mechanism of domestic waste after removal its transport outside the camp



Reasons for public bathrooms' non-functionality



FSL

People provided with meals

Bab Al Salameh: 1,808

Need for food baskets vs. distributor

Baskets the camp needs: 148,763

Baskets distributed monthly: 117,857

Priorities



Education

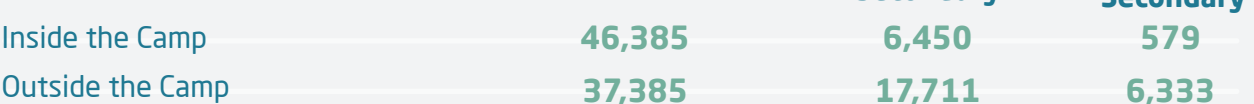
Teachers by Gender



Formal and volunteer teachers in camps



Students who attend schools



Shelter & NFI

