

May, 2022

## IDP's Camps Monitoring Study

The IDPs camps monitoring interactive study includes information about the situation of IDPs in northern Syria camps, with regard to sources of income, the sectors of Health, WASH, Nutrition, Education, Shelter, in addition to some demographic information.

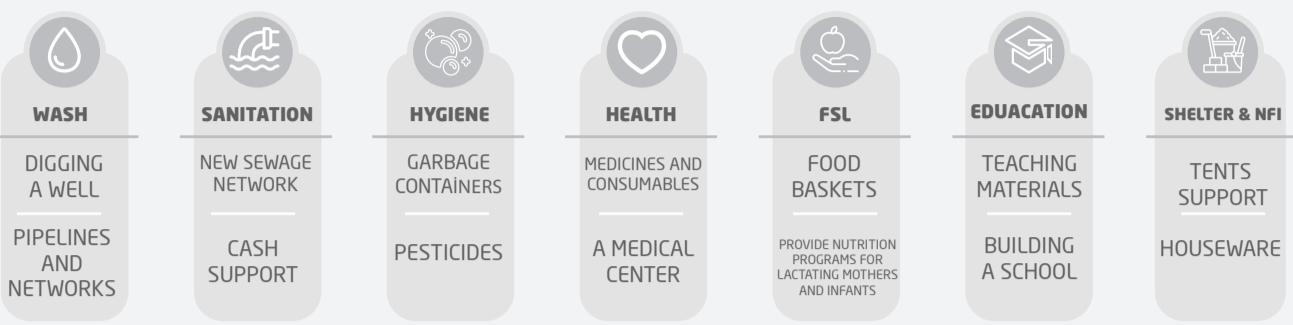
Individuals per cluster

**828,849**

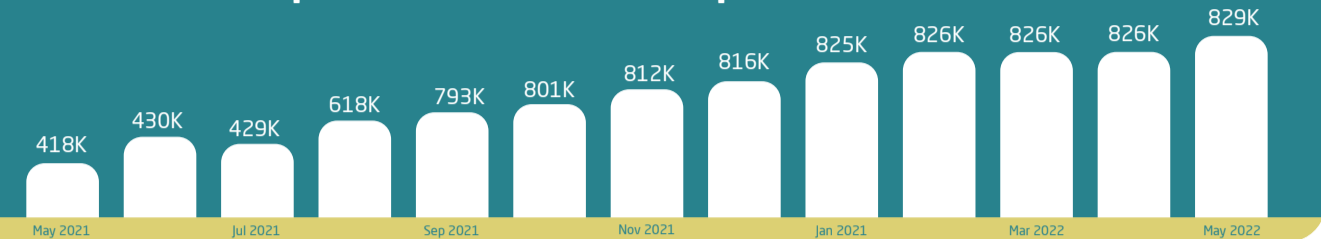
Camps per cluster

**598**

### Camps Priorities for The Month of May 2022



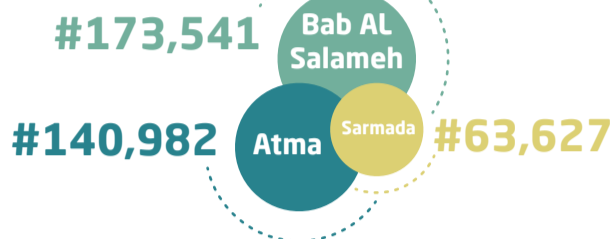
### Population Census for the past 12 Months



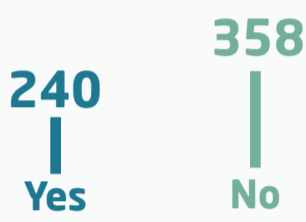
### Population by Gender



### Population by Region



### Do IDPs pay fees to live in the camp?

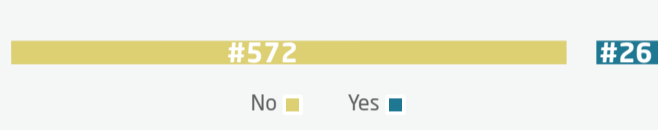


## Health

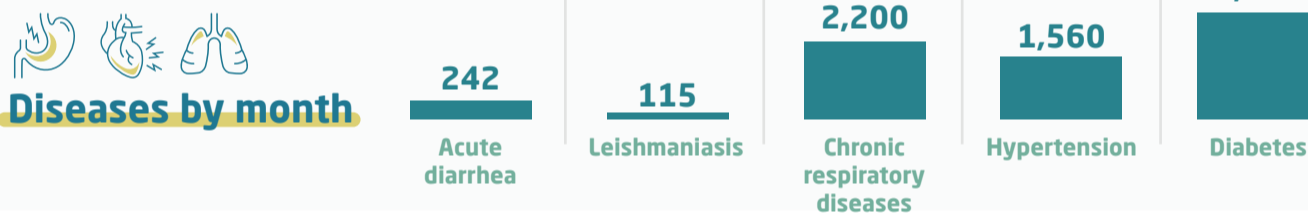
### Medical staff in the camps



### Is there a medical point inside the camp?



### Assessing health services during the past month

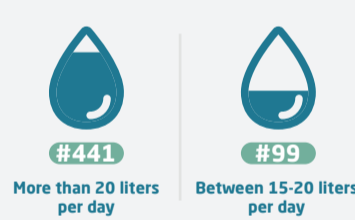


## WASH

### The mechanisms of water delivery



### The average share of drinking water



### Water sterilization



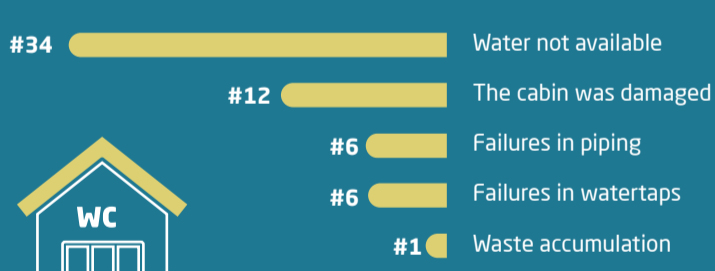
### Regular Garbage Removal



### Disposal mechanism of domestic waste after removal its transport outside the camp

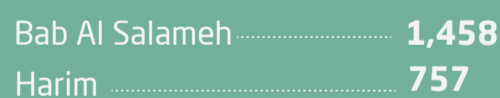


### Reasons for public bathrooms' non-functionality

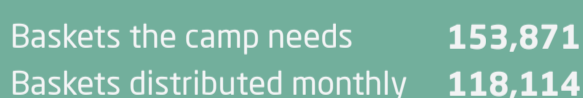


## FSL

### People provided with meals



### Need for food baskets vs. distributor



### Priorities



## Education

### Teachers by Gender



### Formal and volunteer teachers in camps



Students who attend schools	Primary	Lower Secondary	Upper Secondary
Inside the Camp	45,531	6,188	590
Outside the Camp	36,581	17,422	6,242

## Shelter & NFI

