

## WASH Biweekly Bulletin - Syria Early Warning Alert and Response Network

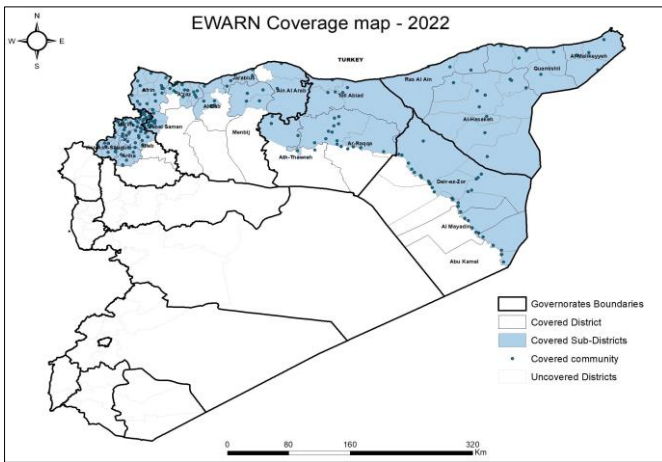
Date: 19 Jun - 2 Jul 2022

Week No. 25-26

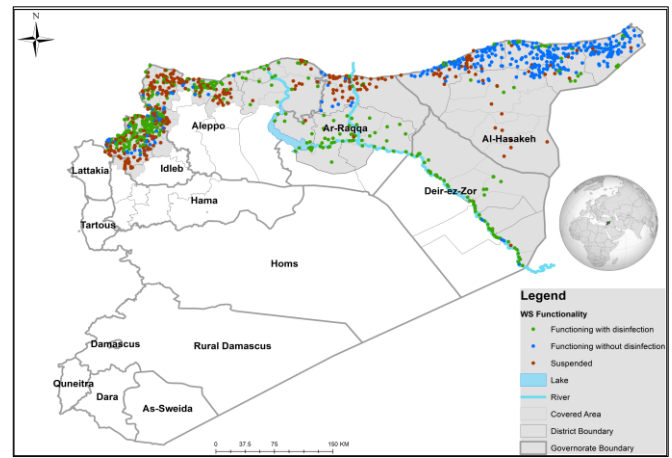
### Highlights

- This report covers 1282 public drinking water stations monitored in 6 governorates, 1098 community-based, and 184 camp-based water stations. The percentages in this report represent only the sources monitored.
- Of the monitored drinking water stations, a percentage of 69% (879/1282) were functioning.
- The percentage of the suspended stations due to the lack of operational costs is 22%, and the percentage of the suspended stations due to the need for total-scale maintenance is 22%, of the total suspended water stations.
- Of the water stations, 37% depend on the grid and 36% depend on generators as a source of electric power.
- In the areas that their stations are suspended, private agricultural wells are used as an alternative water source, and tankers are used in water transportation.
- The percentage of disinfected water sources was 56% (488/879).
- Of the functioning water stations, percentage of 88% (770/879) delivered water using a piping network, percentage of 08% (68/879) delivered water using tankering and percentage of 04% (36/879) delivered water using both, and 00% (5/879) delivered water using manhal.
- 53 water quality tests were conducted, 11 of them were contaminated.

### EWARN Coverage

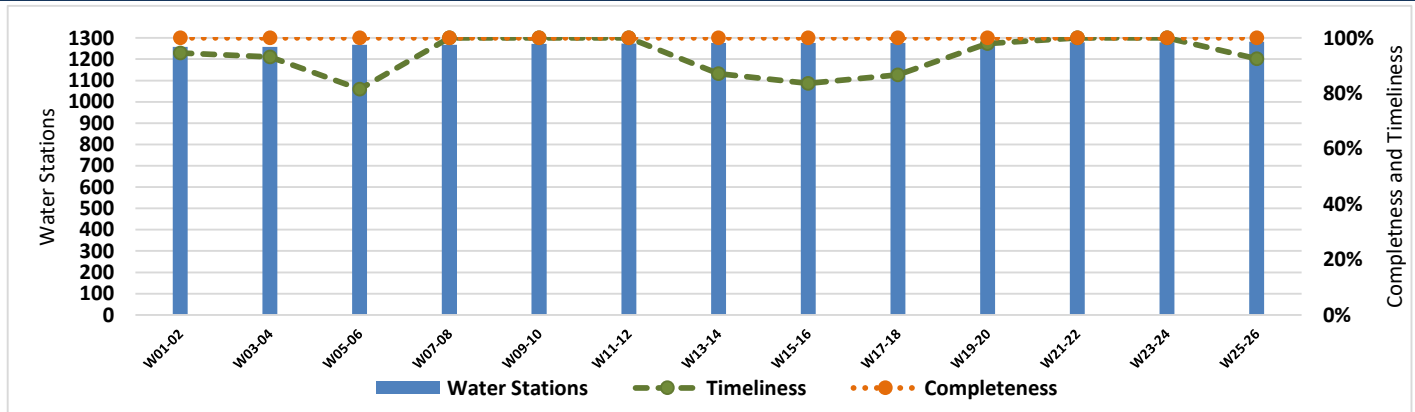


### WASH Coverage by EWARN



WASH covers **77** sub-districts, **23** districts in 6 governorates

### Completeness and Timeliness of Biweekly Reports



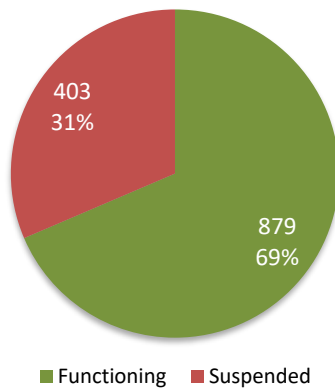
## Drinking Water Stations Status in Each Governorate

Governorate	Drinking Water Stations Status		
	Total	Functioning	Percentage
Aleppo (Non-camps)	257	124	48%
Aleppo (Camps)	44	14	32%
Idleb (Non-camps)	226	142	63%
Idleb (Camps)	140	96	69%
Hama	8	0	0%
Ar-raqqqa	120	74	62%
Deir-ez-Zor	61	59	97%
Al-Hasakeh	426	370	87%
<b>Total</b>	<b>1282</b>	<b>879</b>	<b>69%</b>

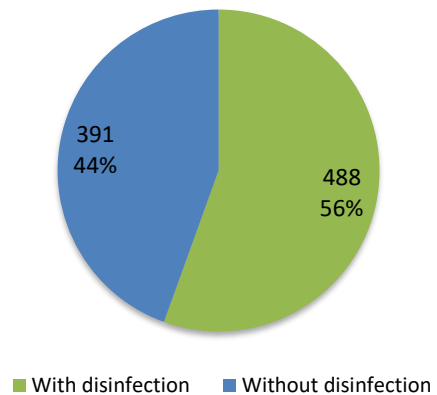
Governorate	Functioning DWS Chlorination Status		
	Total	With disinfection	Percentage
Aleppo (Non-camps)	124	109	88%
Aleppo (Camps)	14	5	36%
Idleb (Non-camps)	142	118	83%
Idleb (Camps)	96	54	56%
Hama	0	0	0%
Ar-raqqqa	74	62	84%
Deir-ez-Zor	59	55	93%
Al-Hasakeh	370	85	23%
<b>Total</b>	<b>879</b>	<b>488</b>	<b>56%</b>

## Drinking Water Stations Status

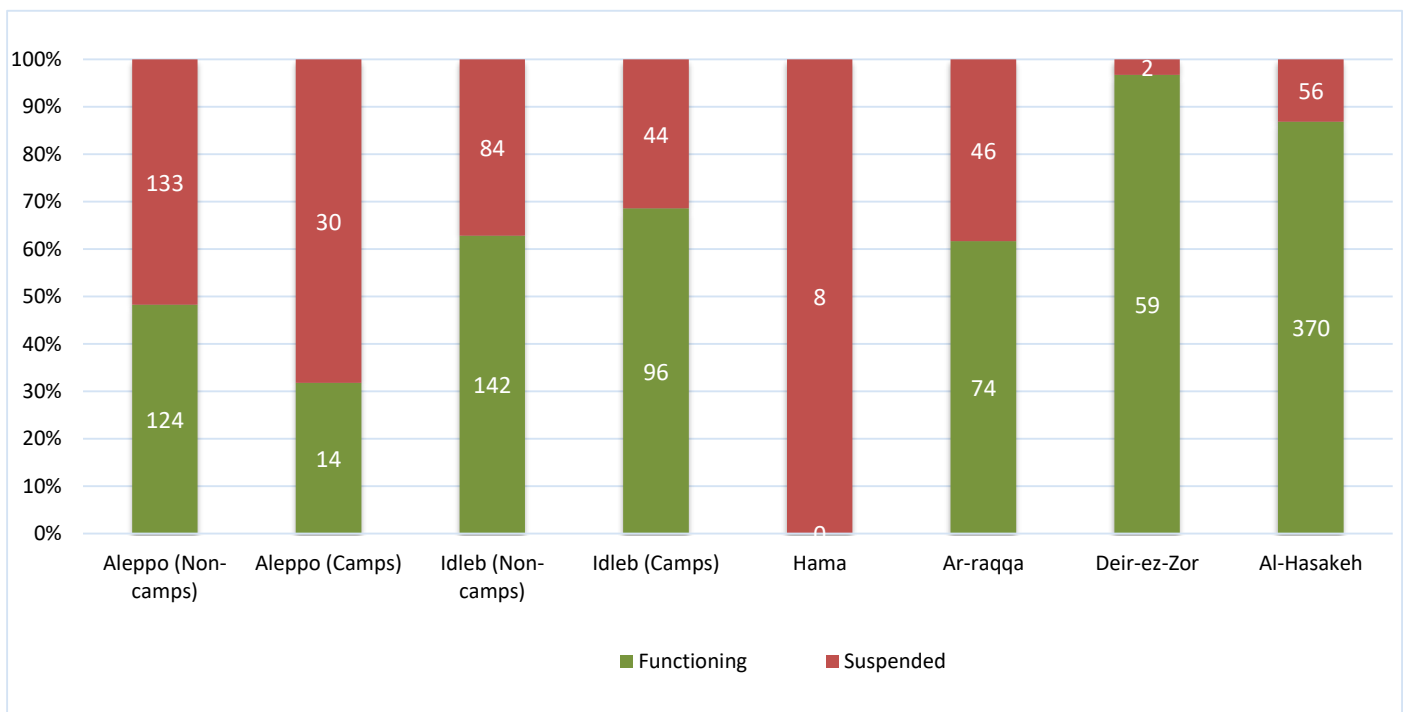
Drinking Water Stations Status



Functioning DWS Chlorination Status

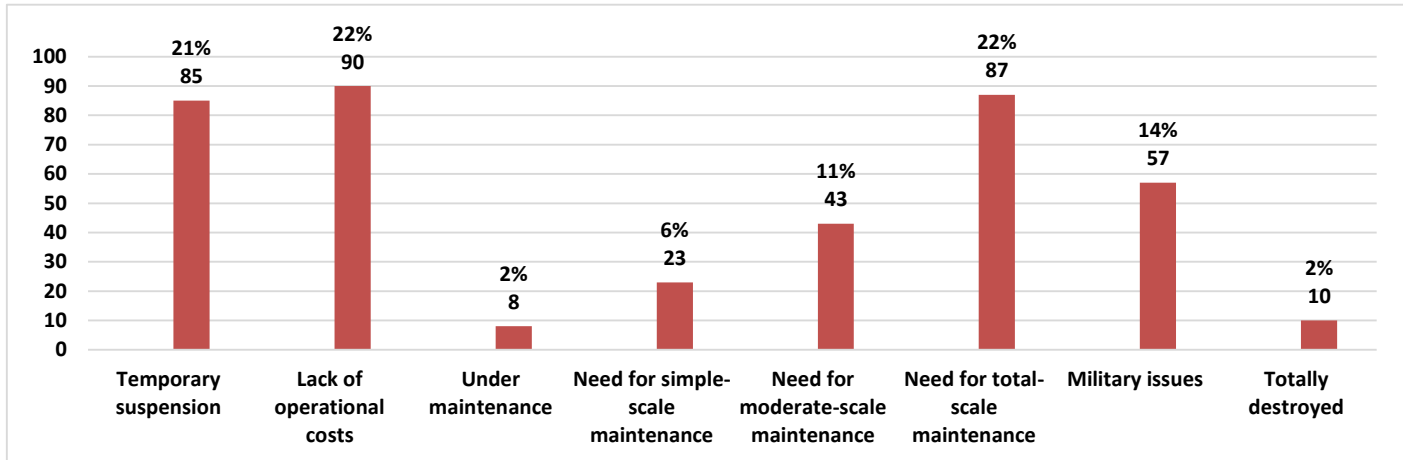


## Drinking Water Stations Status in Governorates



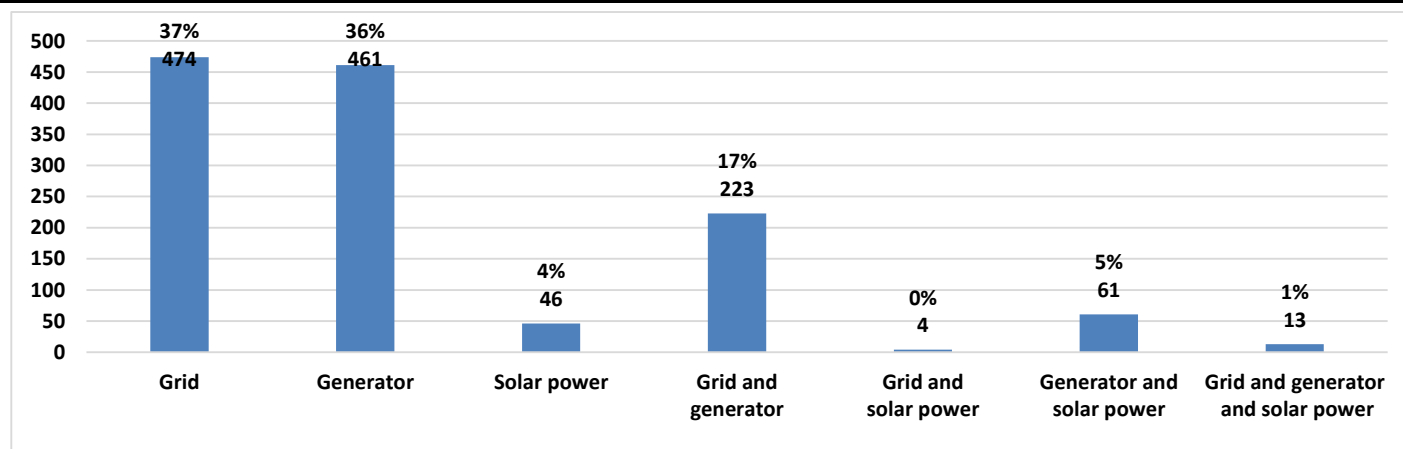
## The Reason for Suspension

Governorate	Temporary suspension	Lack of operational costs	Under maintenance	Need for simple-scale maintenance	Need for moderate-scale maintenance	Need for total-scale maintenance	Military issues	Totally destroyed
Aleppo	35	42	2	8	24	39	8	5
Idleb	12	43	1	10	12	36	11	3
Hama	0	0	0	0	0	0	8	0
Ar-raqqqa	28	0	0	2	6	2	8	0
Deir-ez-Zor	0	0	2	0	0	0	0	0
Al-Hasakeh	10	5	3	3	1	10	22	2
<b>Total</b>	<b>85</b>	<b>90</b>	<b>8</b>	<b>23</b>	<b>43</b>	<b>87</b>	<b>57</b>	<b>10</b>

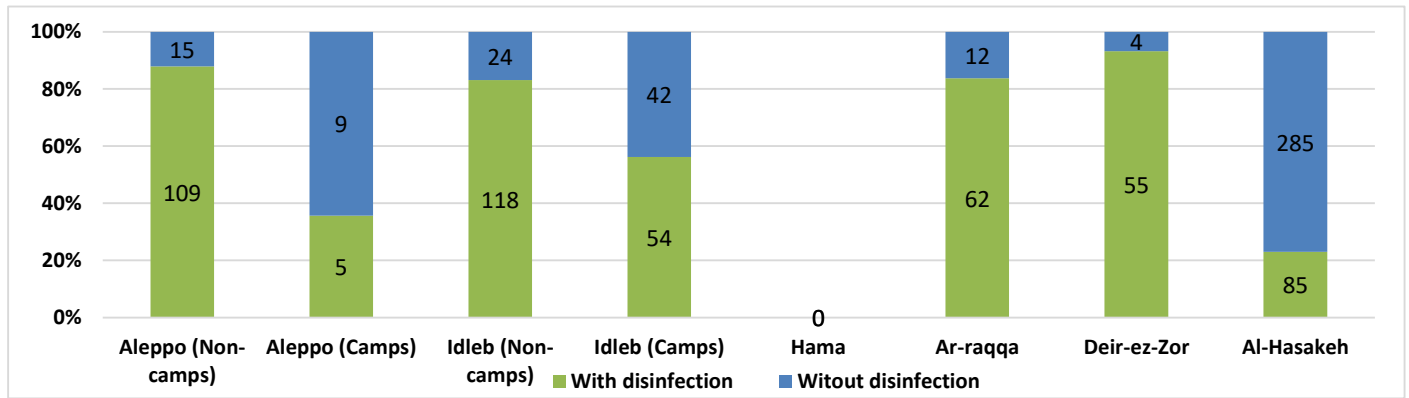


## Source of the Electric Power

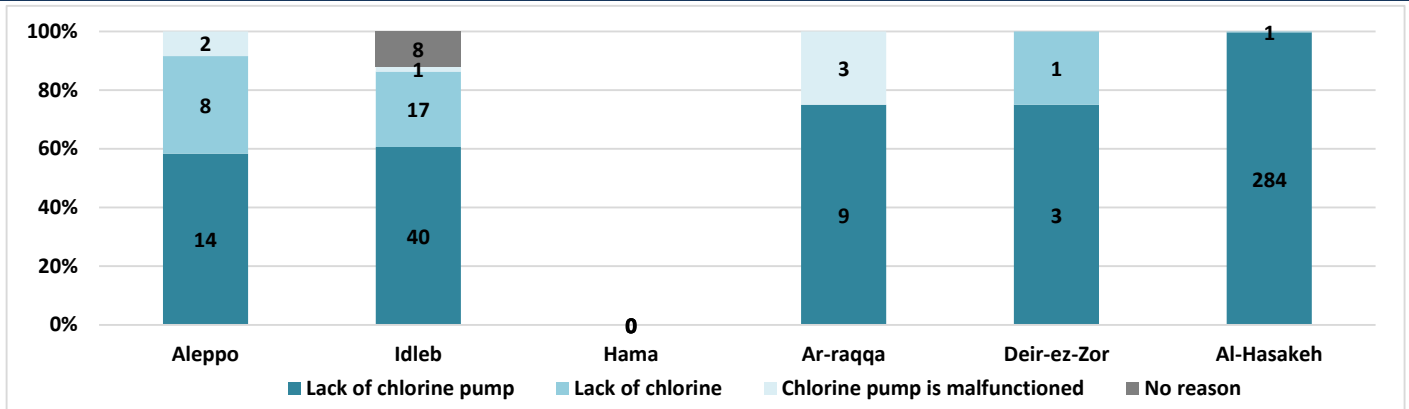
Governorate	Grid	Generator	Solar power	Grid and generator	Grid and solar power	Generator and solar power	Grid and generator and solar power
Aleppo	22	182	13	47	0	26	11
Idleb	13	255	33	25	4	35	1
Hama	0	8	0	0	0	0	0
Ar-raqqqa	81	2	0	37	0	0	0
Deir-ez-Zor	0	12	0	49	0	0	0
Al-Hasakeh	358	2	0	65	0	0	1
<b>Total</b>	<b>474</b>	<b>461</b>	<b>46</b>	<b>223</b>	<b>4</b>	<b>61</b>	<b>13</b>



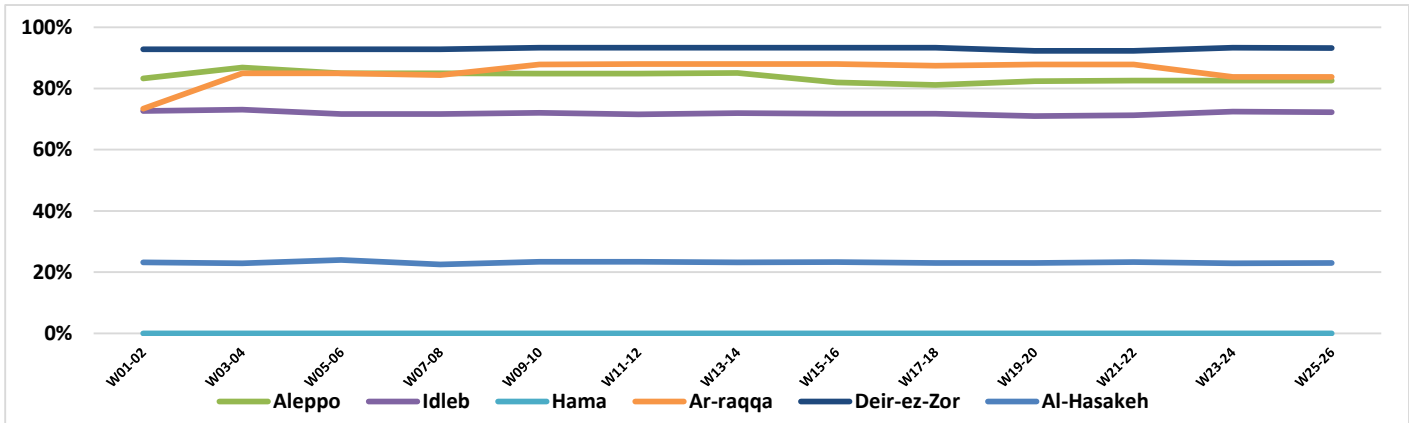
## Functioning Drinking Water Stations Chlorination Status



## The Reason for not Chlorination

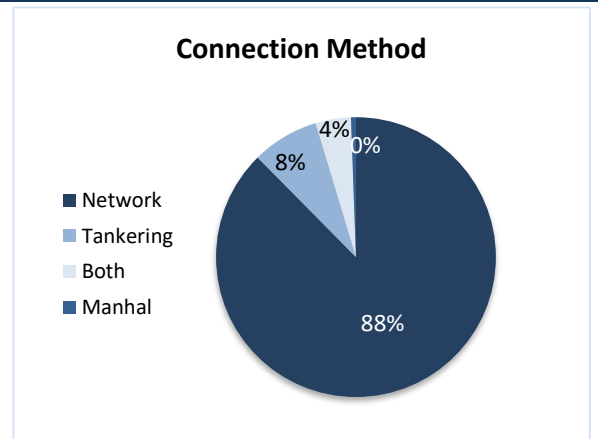


## Chlorination Status Over Weeks

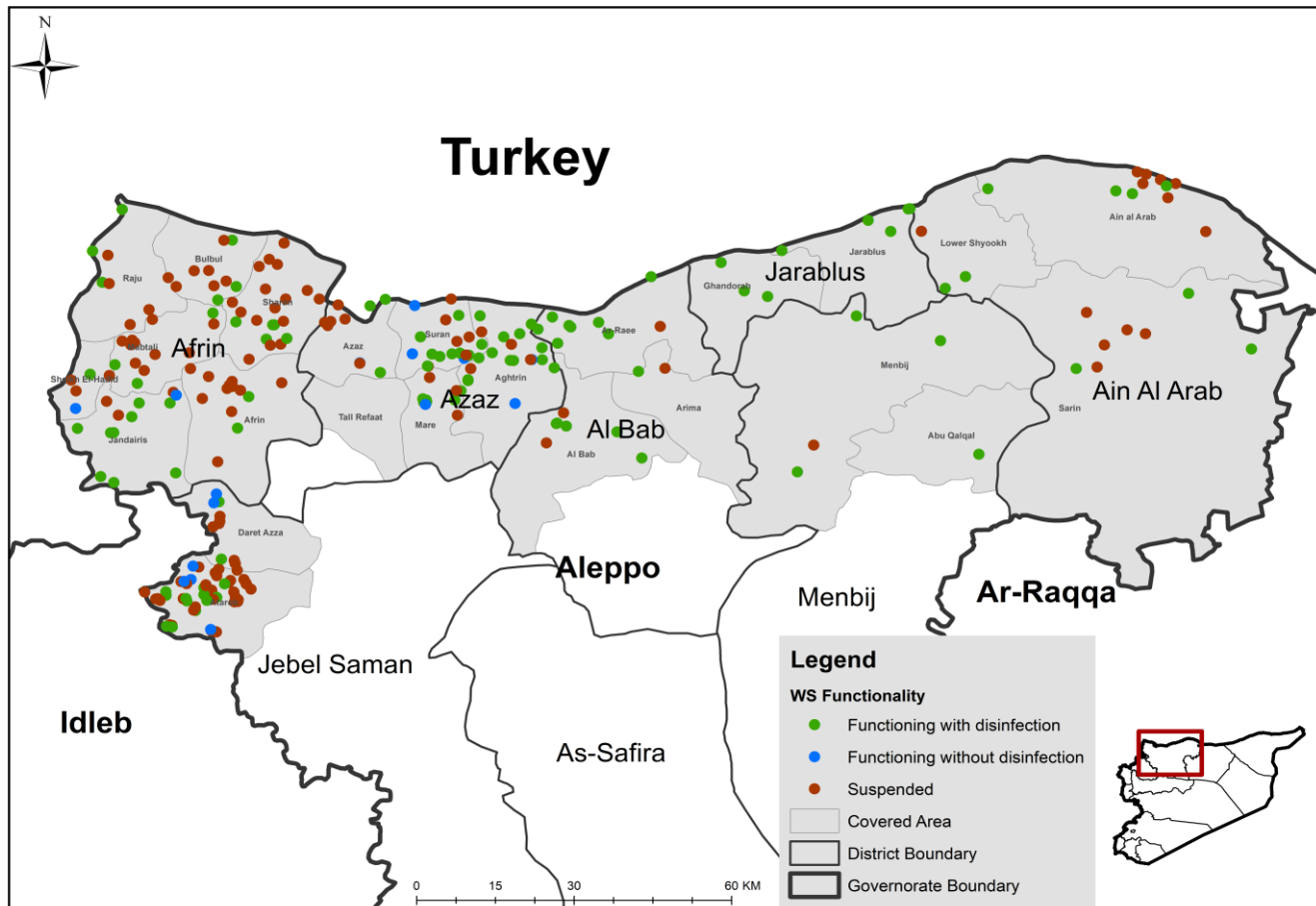


## Connection Method

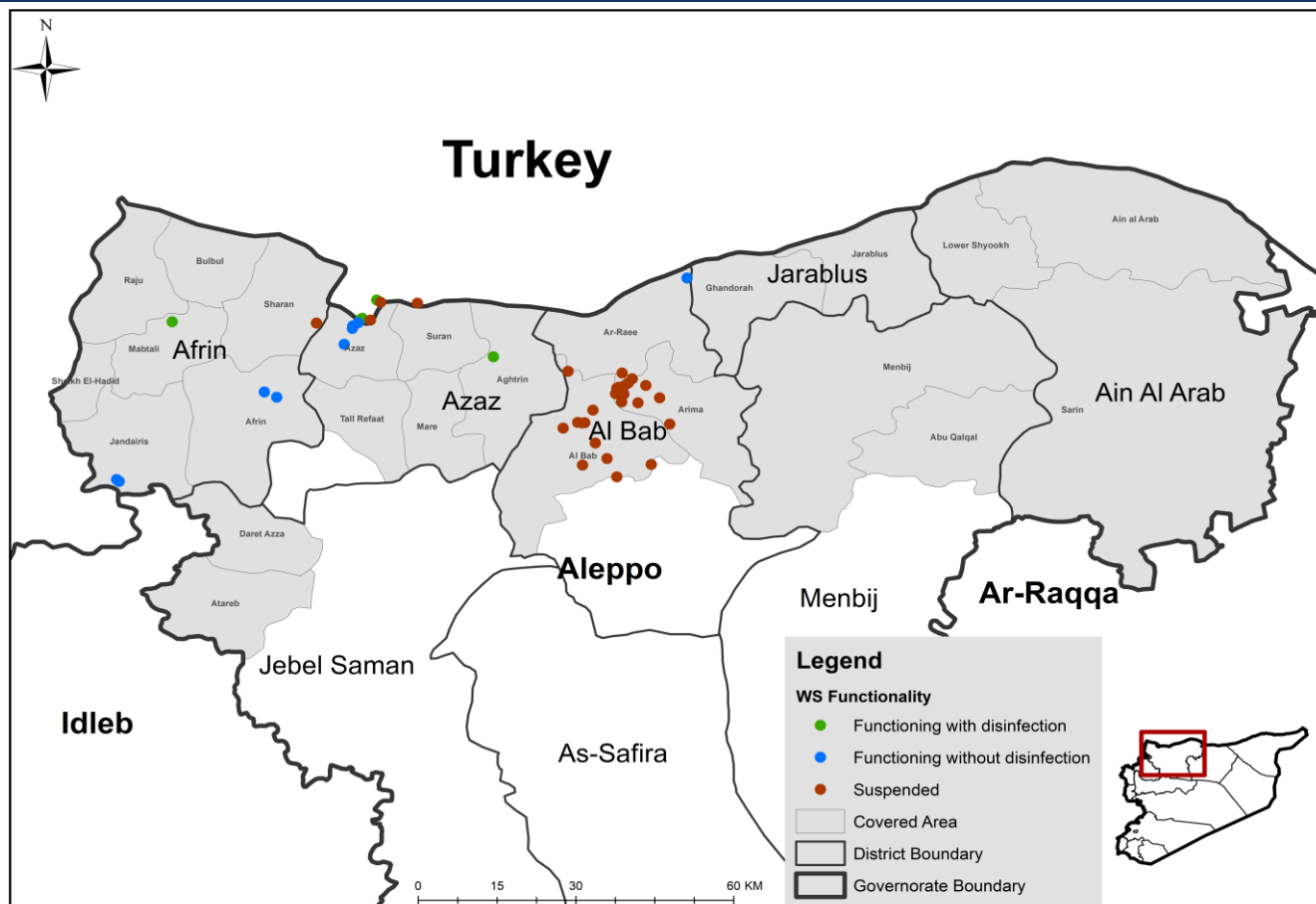
Governorate	Functioning DWS	Method			
		Network	Tankering	Both	Manhal
Aleppo	138	116	5	12	5
Idleb	238	160	57	21	0
Hama	0	0	0	0	0
Ar-raqqa	74	71	2	1	0
Deir-ez-Zor	59	55	4	0	0
Al-Hasakeh	370	368	0	2	0
<b>Total</b>	<b>879</b>	<b>770</b>	<b>68</b>	<b>36</b>	<b>5</b>



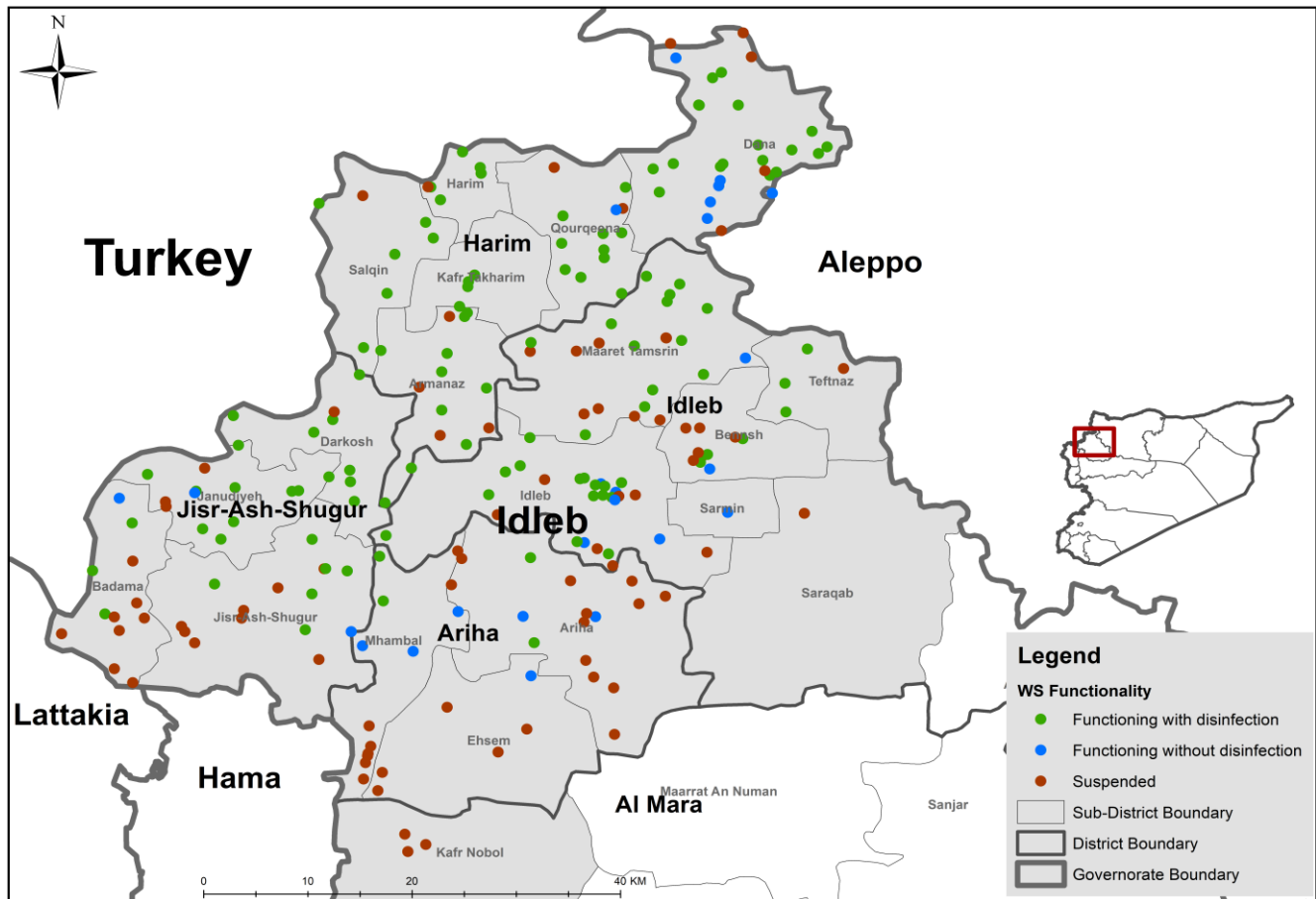
## Drinking Water Stations Distribution in Aleppo (Non-camps Water Stations)



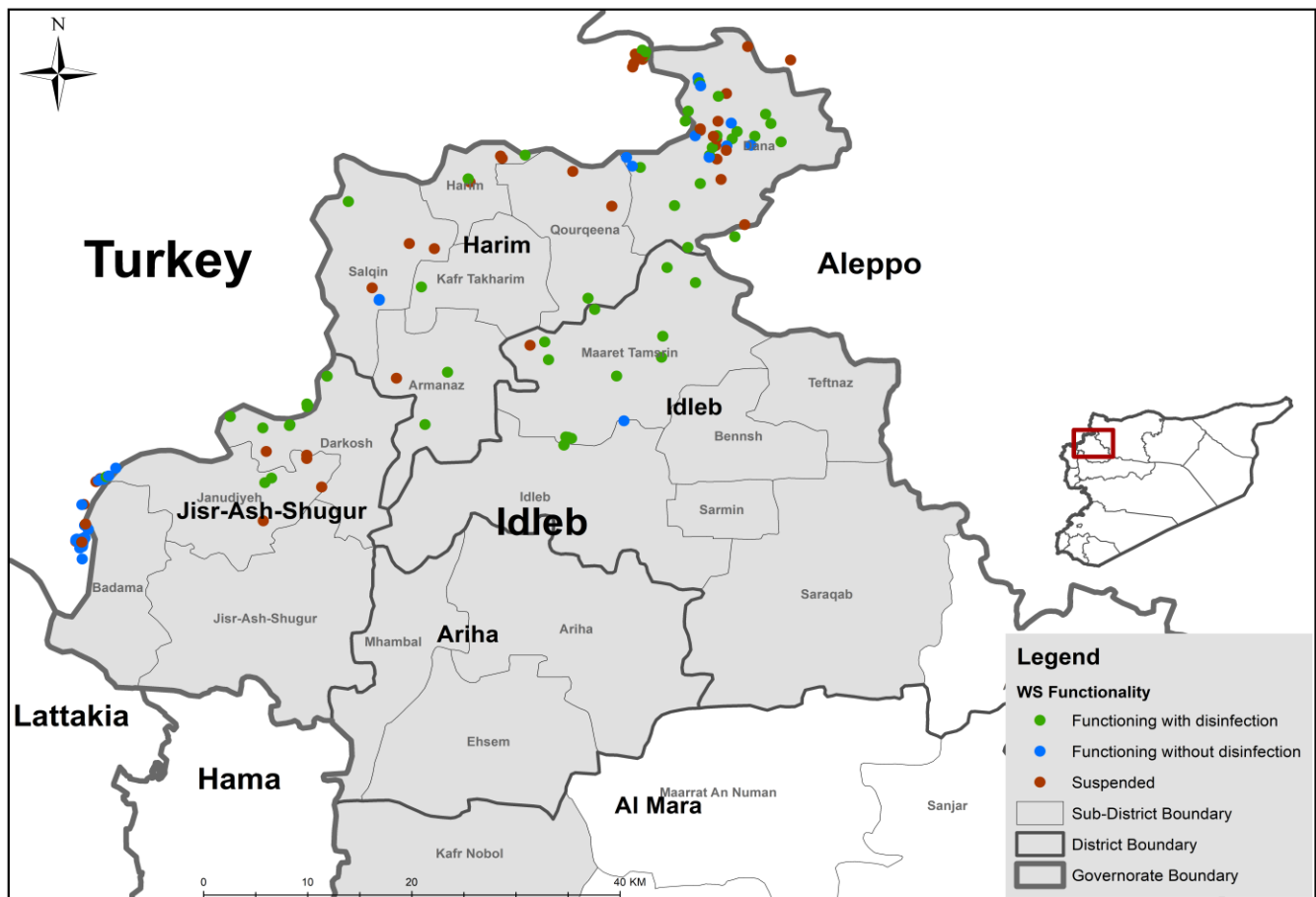
## Drinking Water Stations Distribution in Aleppo (Camps Water Stations)



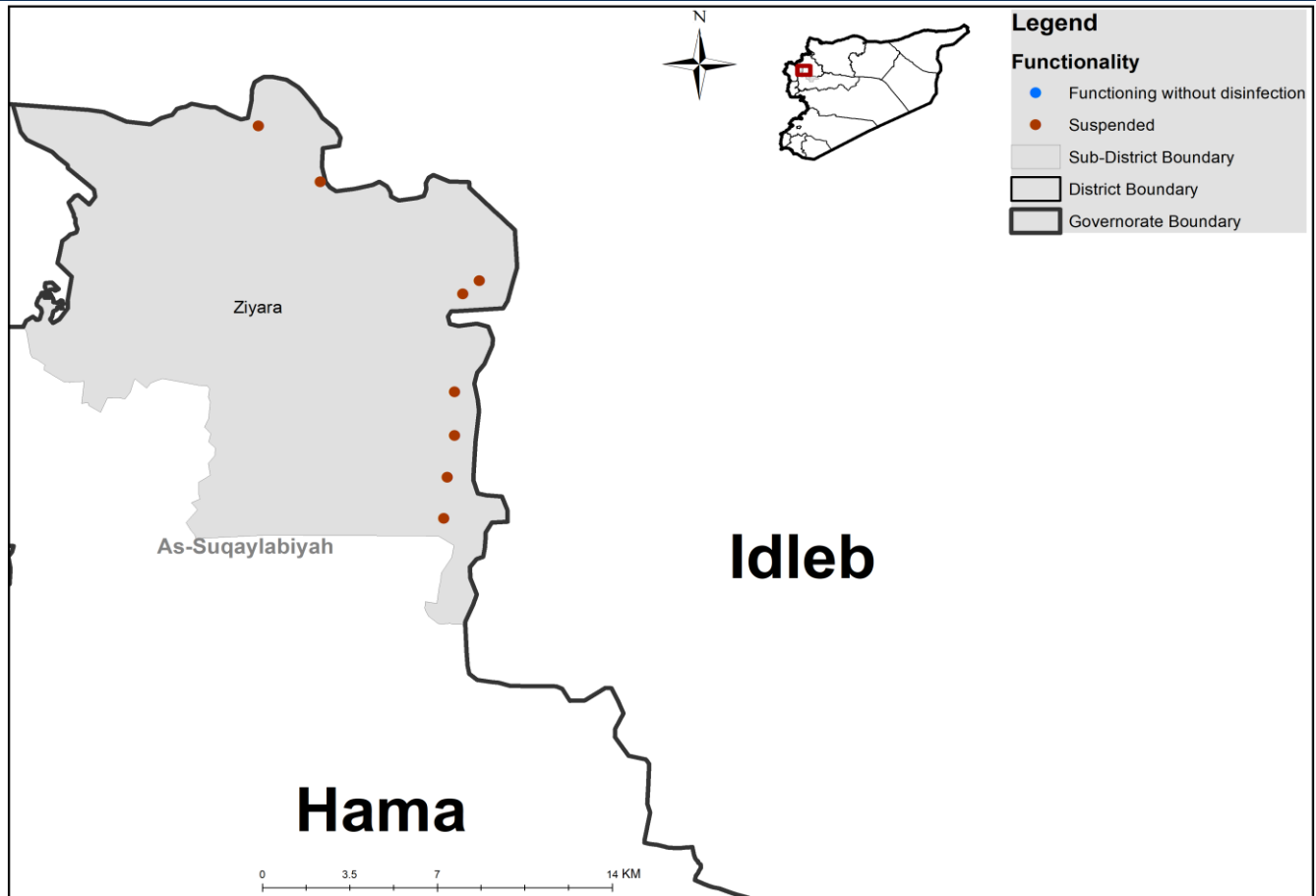
## Drinking Water Stations Distribution in Idleb (Non-camps Water Stations)



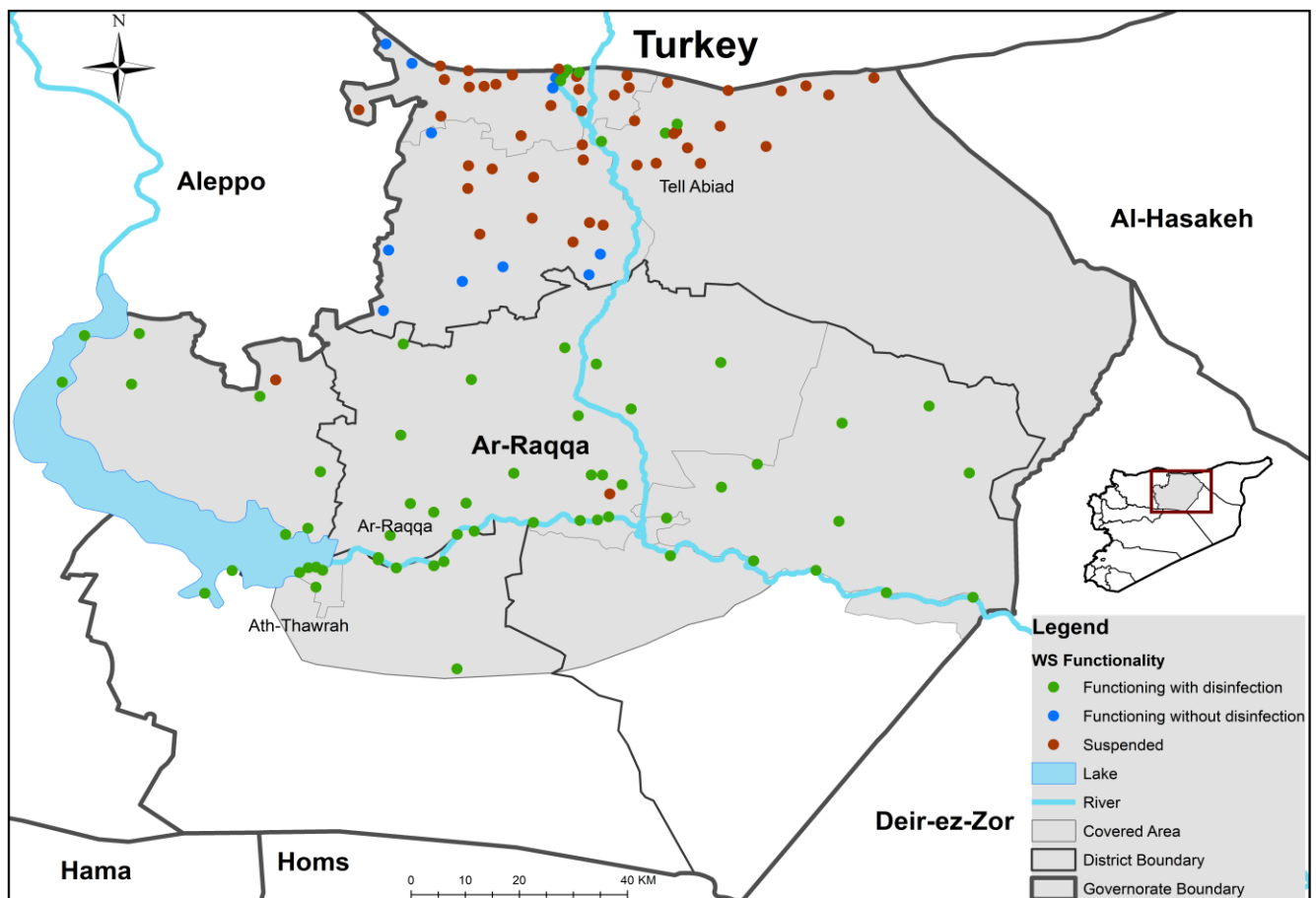
## Drinking Water Stations Distribution in Idleb (Camps Water Stations)



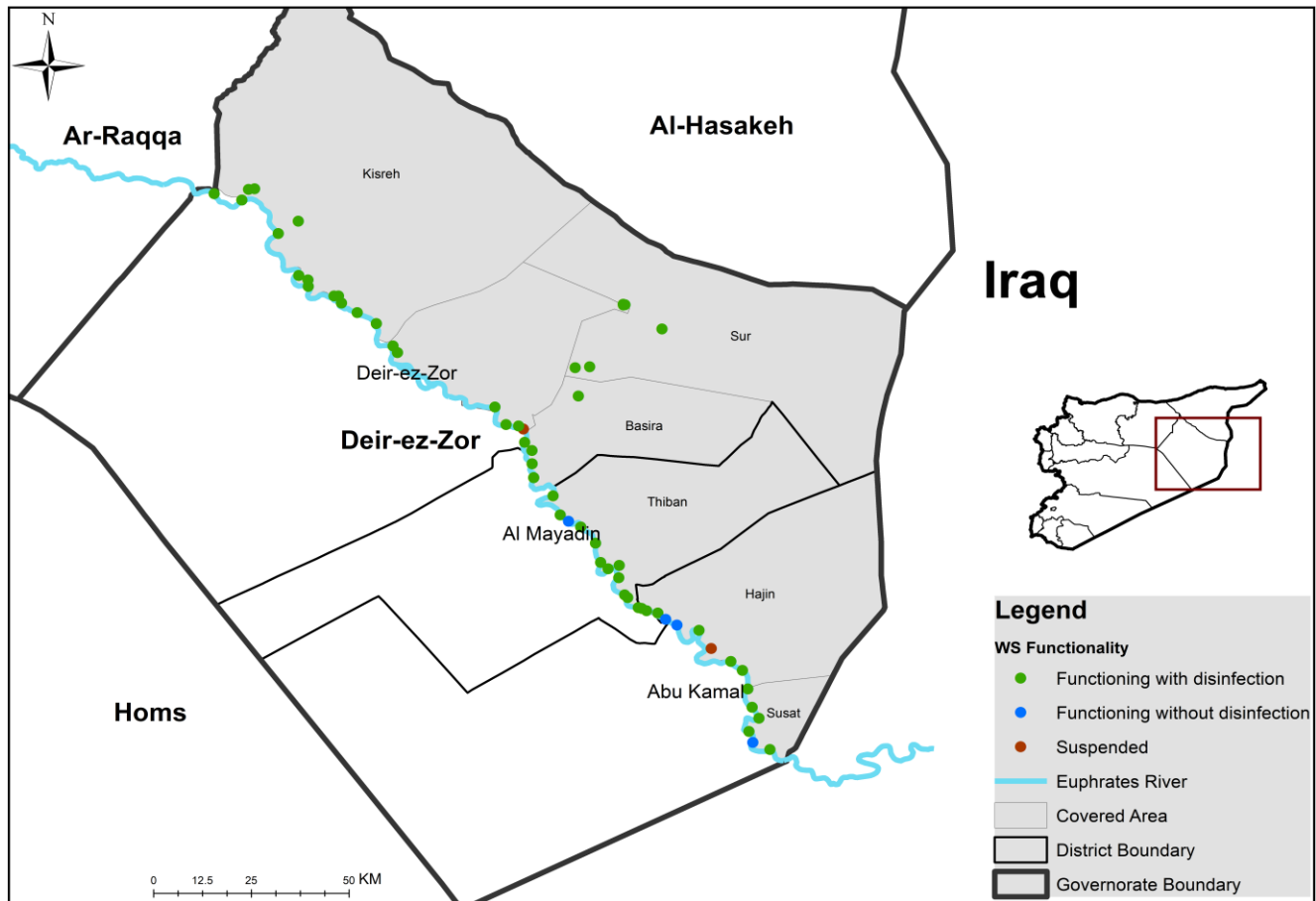
## Drinking Water Stations Distribution in Hama



## Drinking Water Stations Distribution in Ar-raqqa



## Drinking Water Stations Distribution in Deir-ez-Zor



## Drinking Water Stations Distribution in Al-Hasakeh

