

June, 2022

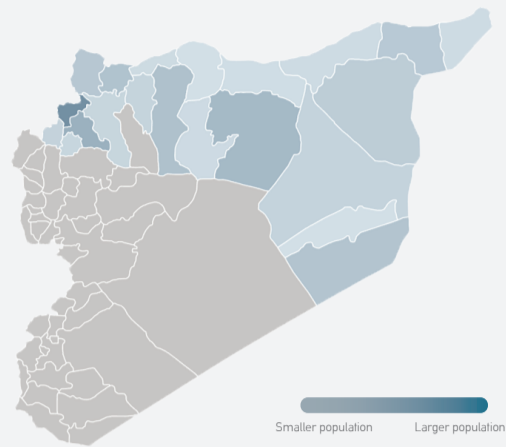
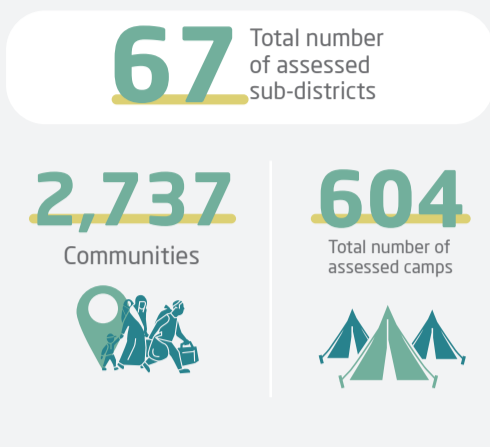
## Study of Population Displacement & Return Movements

### INTRODUCTION

Despite the deteriorating conditions in Syria, some refugees and IDPs return to their original places. This infographic presents information on these populations in areas outside the regime control. ACU's enumerators constantly track these populations, along with movements of displacement and return.

This study presents the total number of populations and gender ratio, the total number of old and new IDPs and their types of shelters, the number of those who left and the reasons for leaving, and the number of returnees last month with their most critical needs.

The study also presents information on local councils in the return areas last month, availability and evaluation of basic services, decision-makers and primary service providers, and sources of income for returnees.



### TOTAL STATISTICS



### TOP DISTRICTS WITH THE LARGEST NUMBER OF IDPS

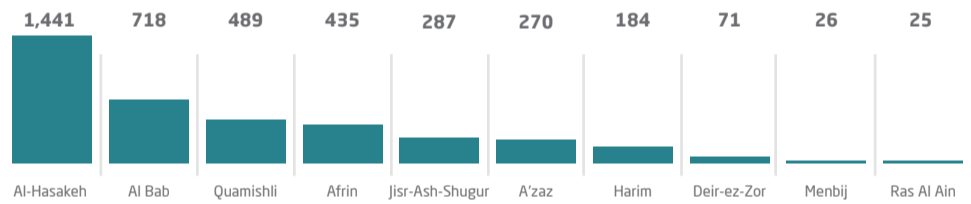


### GENDER



### DEPARTURES

**3,946**  
TOTAL NUMBER OF DEPARTURES



### Reasons for Departing

- 1 Their towns are not serviced
- 2 Humaintarian assistance is not provided in their towns
- 3 The lack of job opportunities in their towns
- 4 Because the camp they were living in closed

### Camps

- 44.93%
- 34.78%
- 18.84%
- 1.45%

### SHELTER TYPES FOR IDPs



### SERVICES

