

WASH Biweekly Bulletin - Syria Early Warning Alert and Response Network

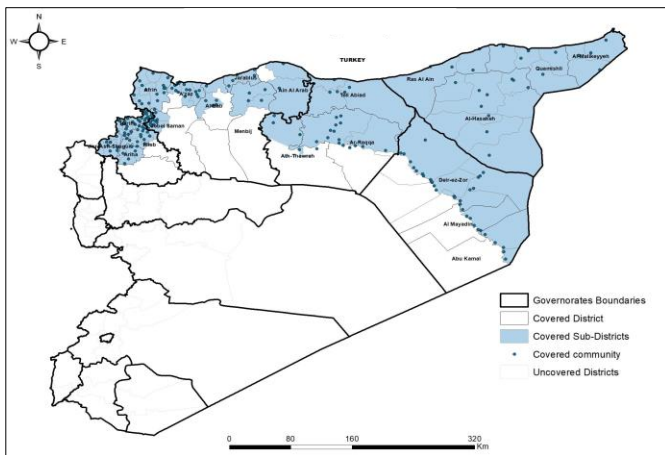
Date: 10 Mar - 23 Mar 2024

Week No. 11-12

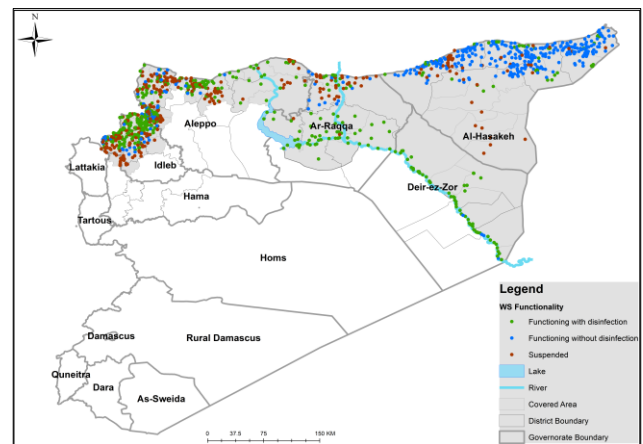
Highlights

- This report covers 1333 public drinking water stations monitored in 6 governorates, 1112 community-based, and 221 camp-based water stations. The percentages in this report represent only the sources monitored.
- Of the monitored drinking water stations, a percentage of 68% (904/1333) were functioning, while 32% (429/1333) of the station were non-functional
- The percentage of the suspended stations due to the lack of operational costs is 20%, and the percentage of the suspended stations due to the need for total-scale maintenance is 20%, of the total suspended water stations.
- Of the water stations, 32% depend on the grid and 30% depend on generators as a electric power, while the rest of the stations depend on other sources (more details below).
- In the areas that their stations are suspended, private agricultural wells are used as an alternative water source, and tankers are used in water transportation.
- The percentage of disinfected water sources was 65% (588/904).
- Of the functioning water stations, percentage of 88% (772/904) delivered water using a piping network, percentage of 08% (62/904) delivered water using water trucking and percentage of 04% (65/904) delivered water using both, and 01% (5/904) delivered water using manhal.
- 5 water quality tests were conducted, 0 of them were contaminated.

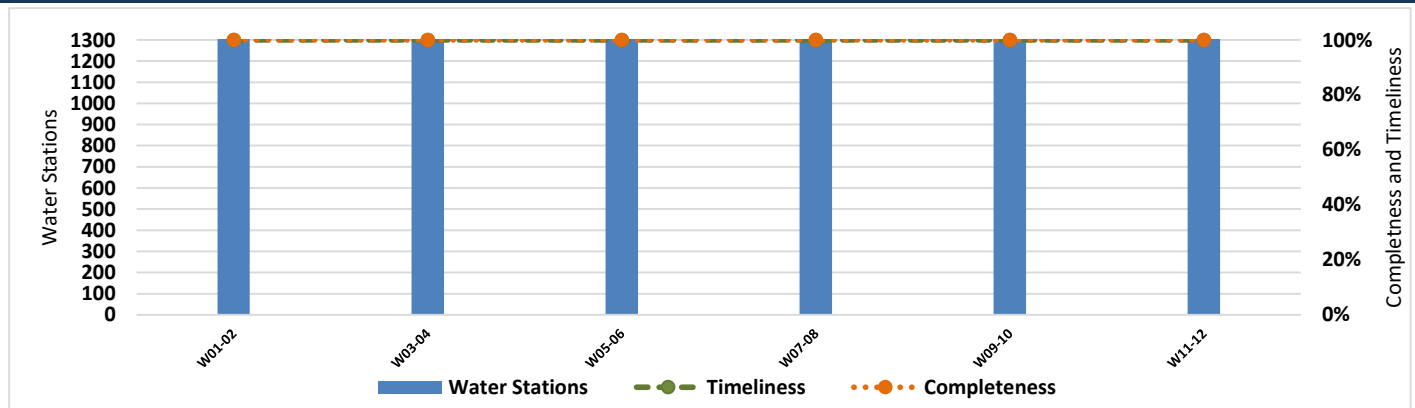
EWARN Coverage



WASH Coverage by EWARN



Completeness and Timeliness of Biweekly Reports



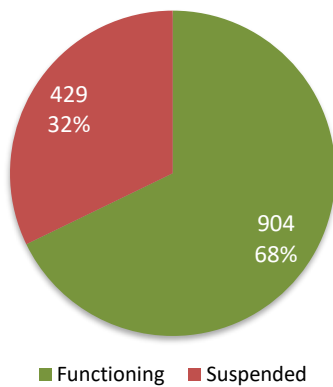
Drinking Water Stations Status in Each Governorate

Governorate	Drinking Water Stations Status		
	Total	Functioning	Percentage
Aleppo (Communities)	262	147	56%
Aleppo (Camps)	51	21	41%
Idleb (Communities)	232	156	67%
Idleb (Camps)	170	121	71%
Hama	8	0	0%
Ar-raqqa	122	92	75%
Deir-ez-Zor	61	59	97%
Al-Hasakeh	427	308	72%
Total	1333	904	68%

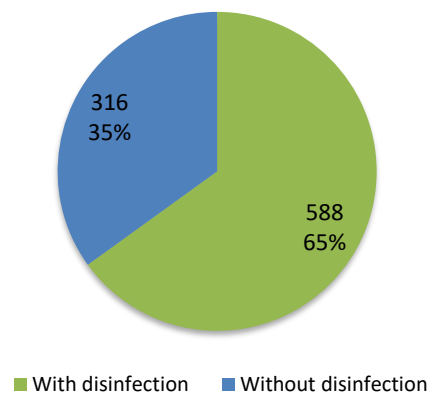
Governorate	Functioning DWS Chlorination Status		
	Total	With disinfection	Percentage
Aleppo (Communities)	147	130	88%
Aleppo (Camps)	21	16	76%
Idleb (Communities)	156	130	83%
Idleb (Camps)	121	84	69%
Hama	0	0	0%
Ar-raqqa	92	75	82%
Deir-ez-Zor	59	56	95%
Al-Hasakeh	308	97	31%
Total	904	588	65%

Drinking Water Stations Status

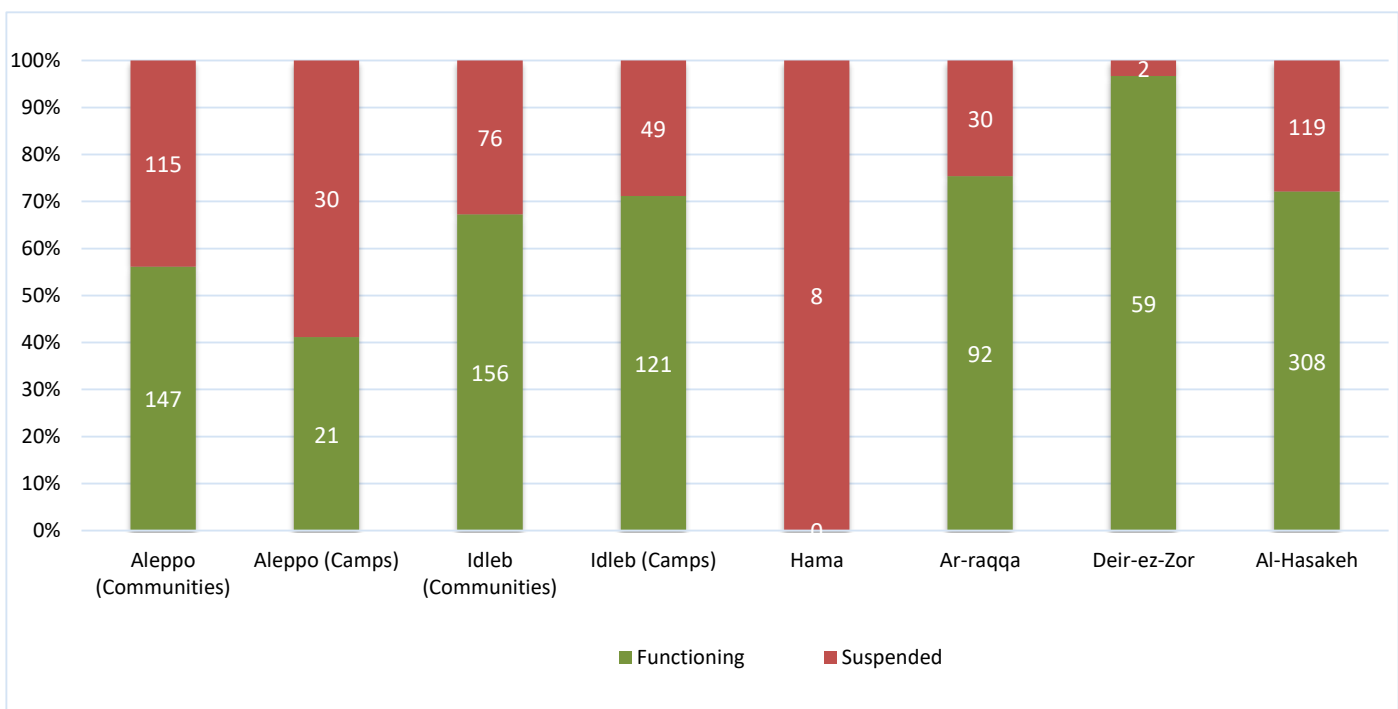
Drinking Water Stations Status



Functioning DWS Chlorination Status

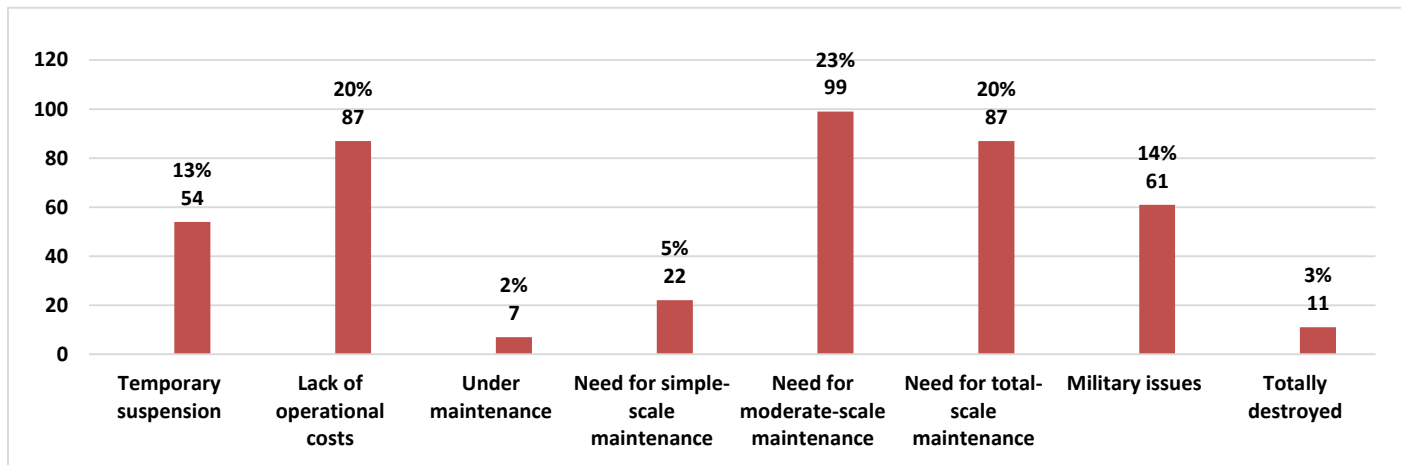


Drinking Water Stations Status in Governorates



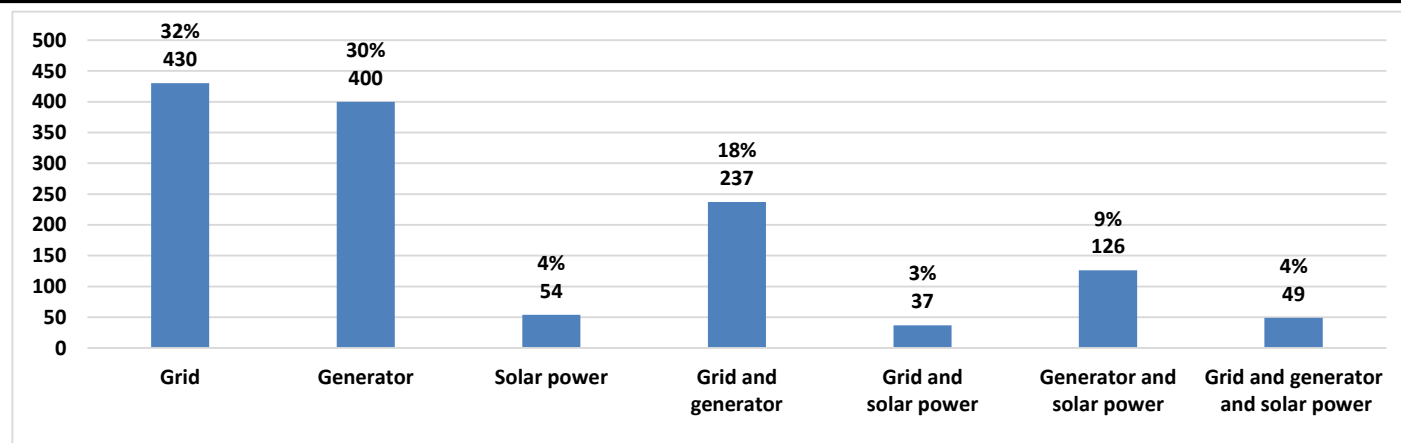
The Reason for Suspension

Governorate	Temporary suspension	Lack of operational costs	Under maintenance	Need for simple-scale maintenance	Need for moderate-scale maintenance	Need for total-scale maintenance	Military issues	Totally destroyed
Aleppo	25	33	3	5	22	41	9	6
Idleb	9	40	4	11	10	37	11	3
Hama	0	0	0	0	0	0	8	0
Ar-raqqqa	2	6	0	4	5	4	9	0
Deir-ez-Zor	0	0	0	0	0	1	1	0
Al-Hasakeh	18	8	0	2	62	4	23	2
Total	54	87	7	22	99	87	61	11

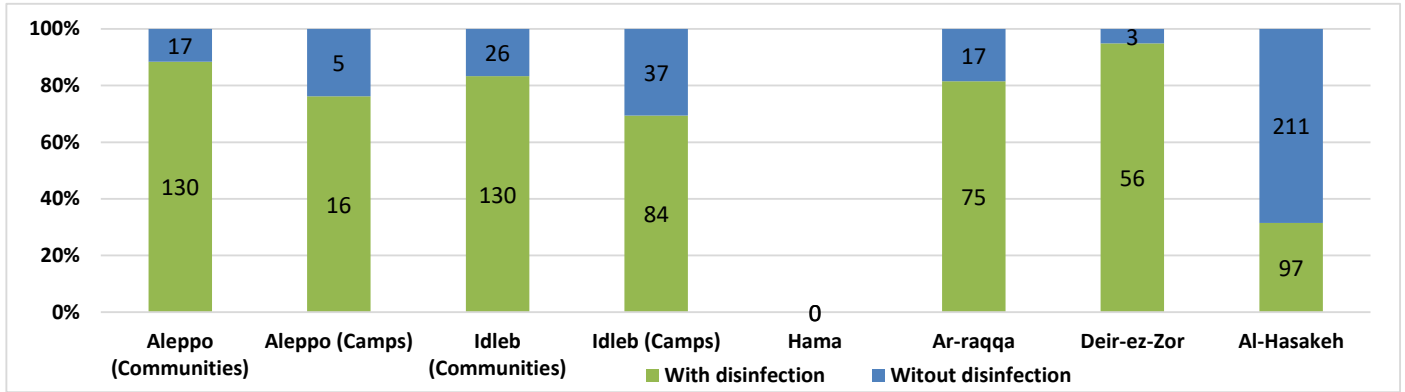


Source of the Electric Power

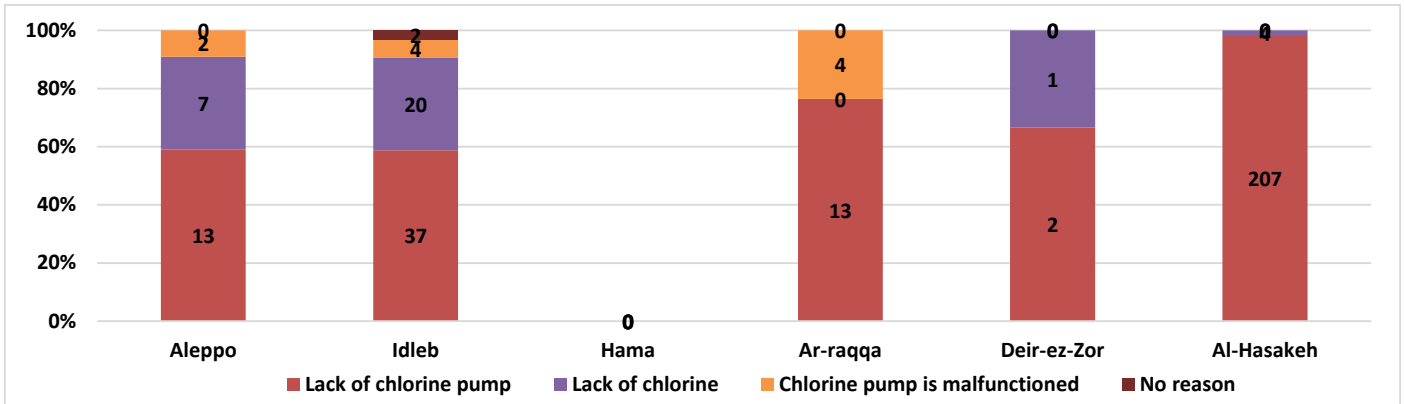
Governorate	Grid	Generator	Solar power	Grid and generator	Grid and solar power	Generator and solar power	Grid and generator and solar power
Aleppo	21	163	15	44	4	45	21
Idleb	9	208	34	54	6	74	17
Hama	0	8	0	0	0	0	0
Ar-raqqqa	75	2	5	27	5	6	2
Deir-ez-Zor	0	12	0	49	0	0	0
Al-Hasakeh	325	7	0	63	22	1	9
Total	430	400	54	237	37	126	49



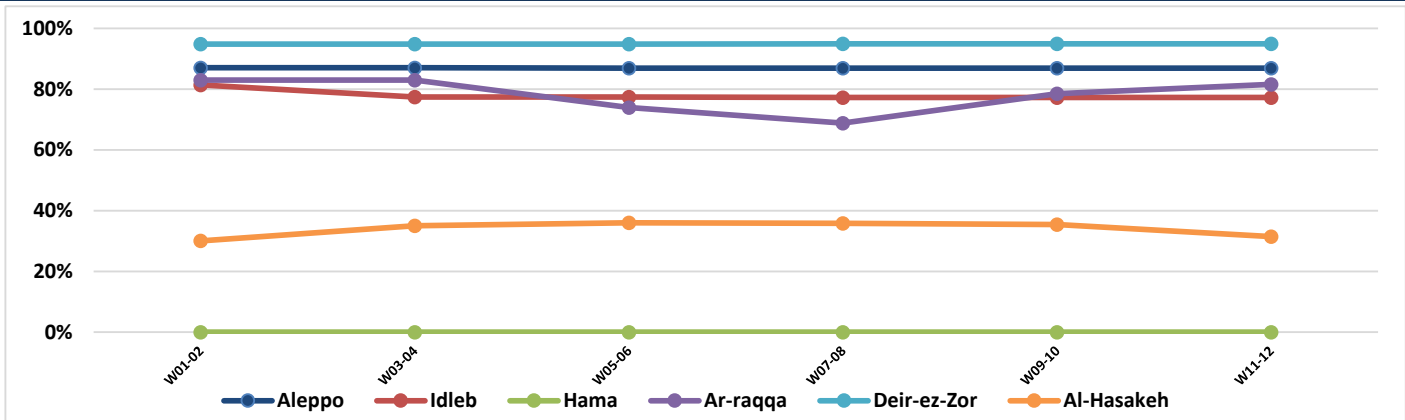
Functioning Drinking Water Stations Chlorination Status



The Reason for not Chlorination

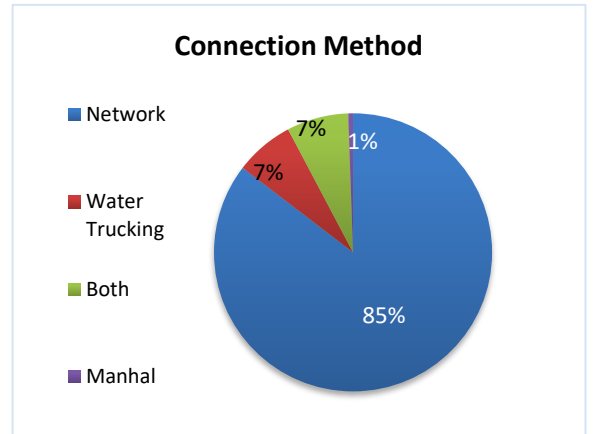


Chlorination Status Over Weeks

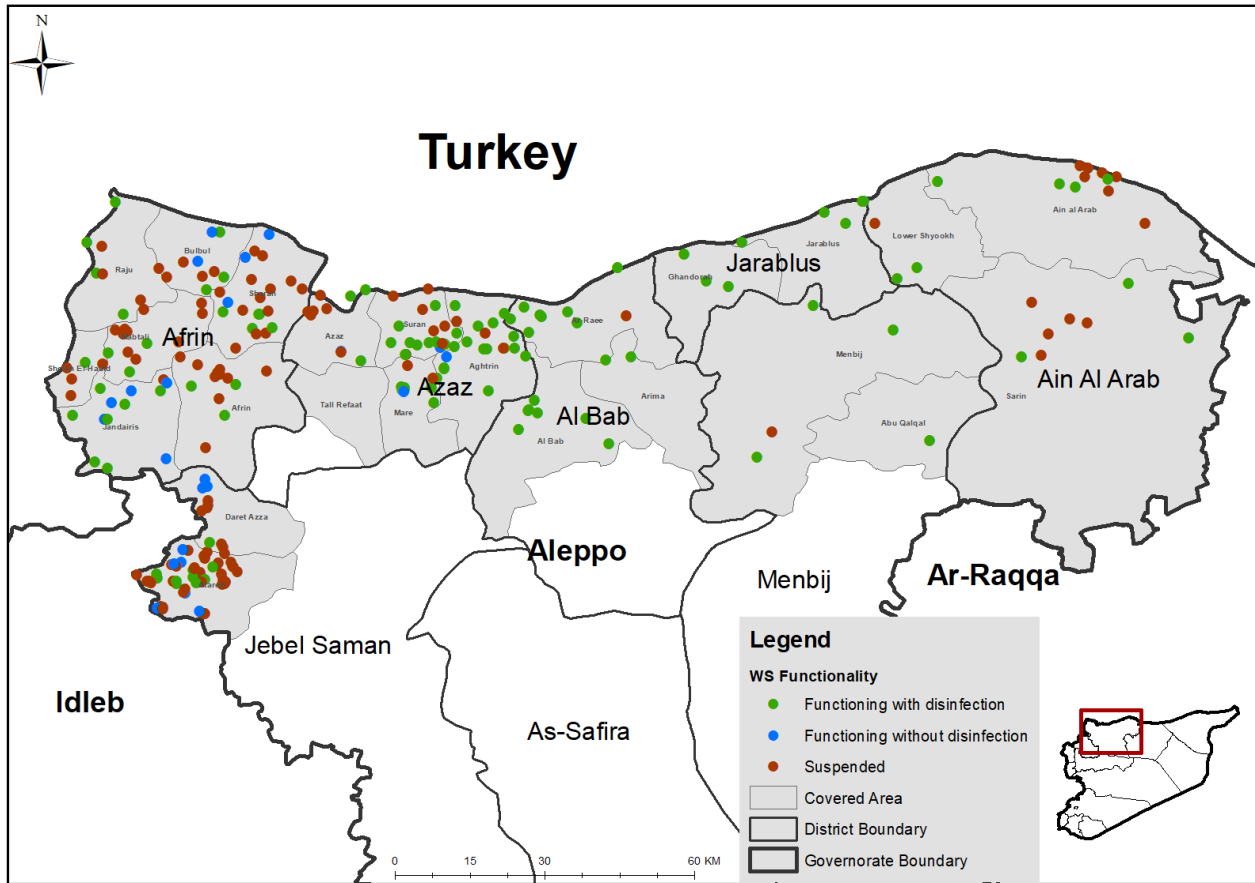


Connection Method

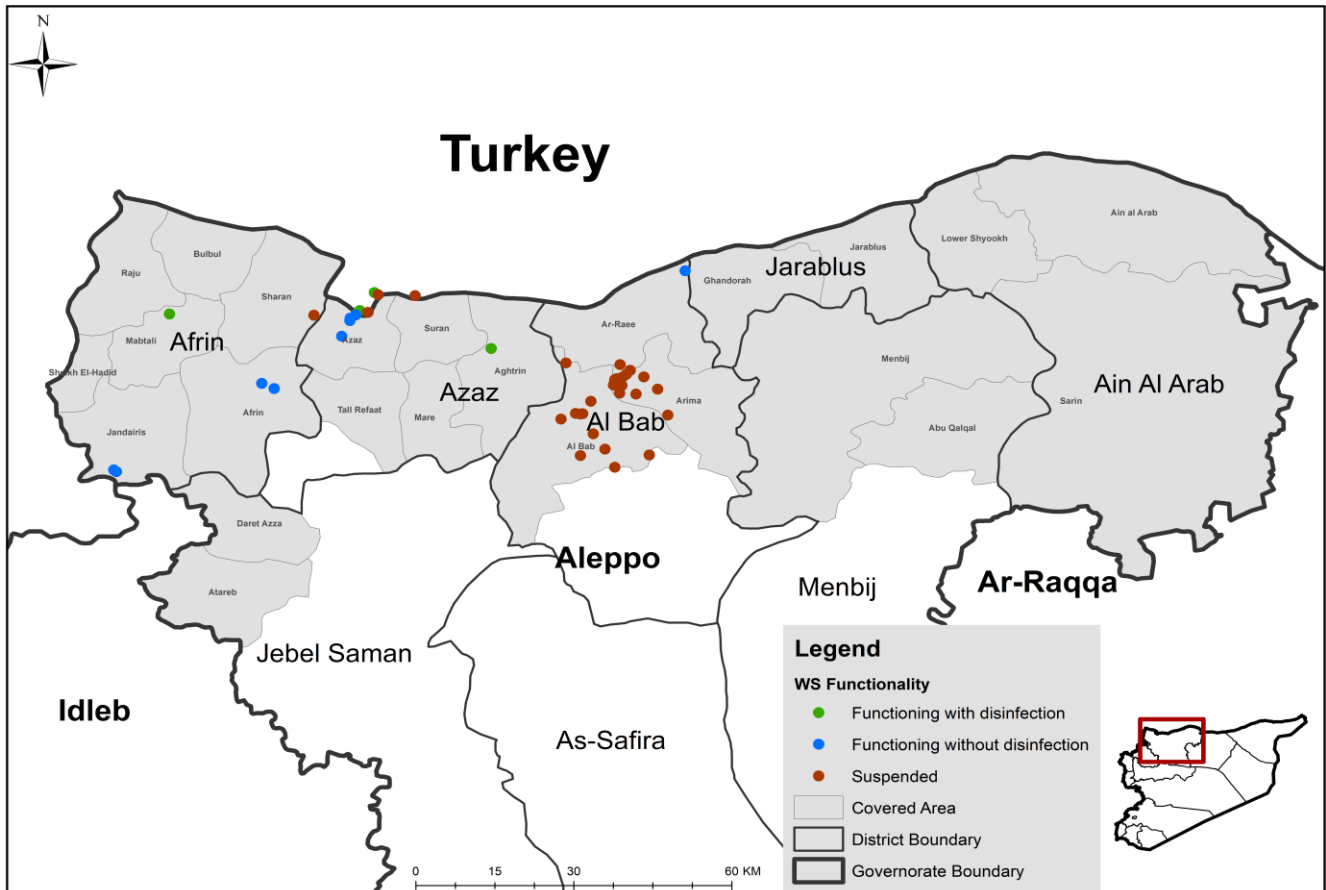
Governorate	Functioning DWS	Method			
		Network	Water Trucking	Both	Manhal
Aleppo	168	147	2	14	5
Idleb	277	175	53	49	0
Hama	0	0	0	0	0
Ar-raqqa	92	89	2	1	0
Deir-ez-Zor	59	55	4	0	0
Al-Hasakeh	308	306	1	1	0
Total	904	772	62	65	5



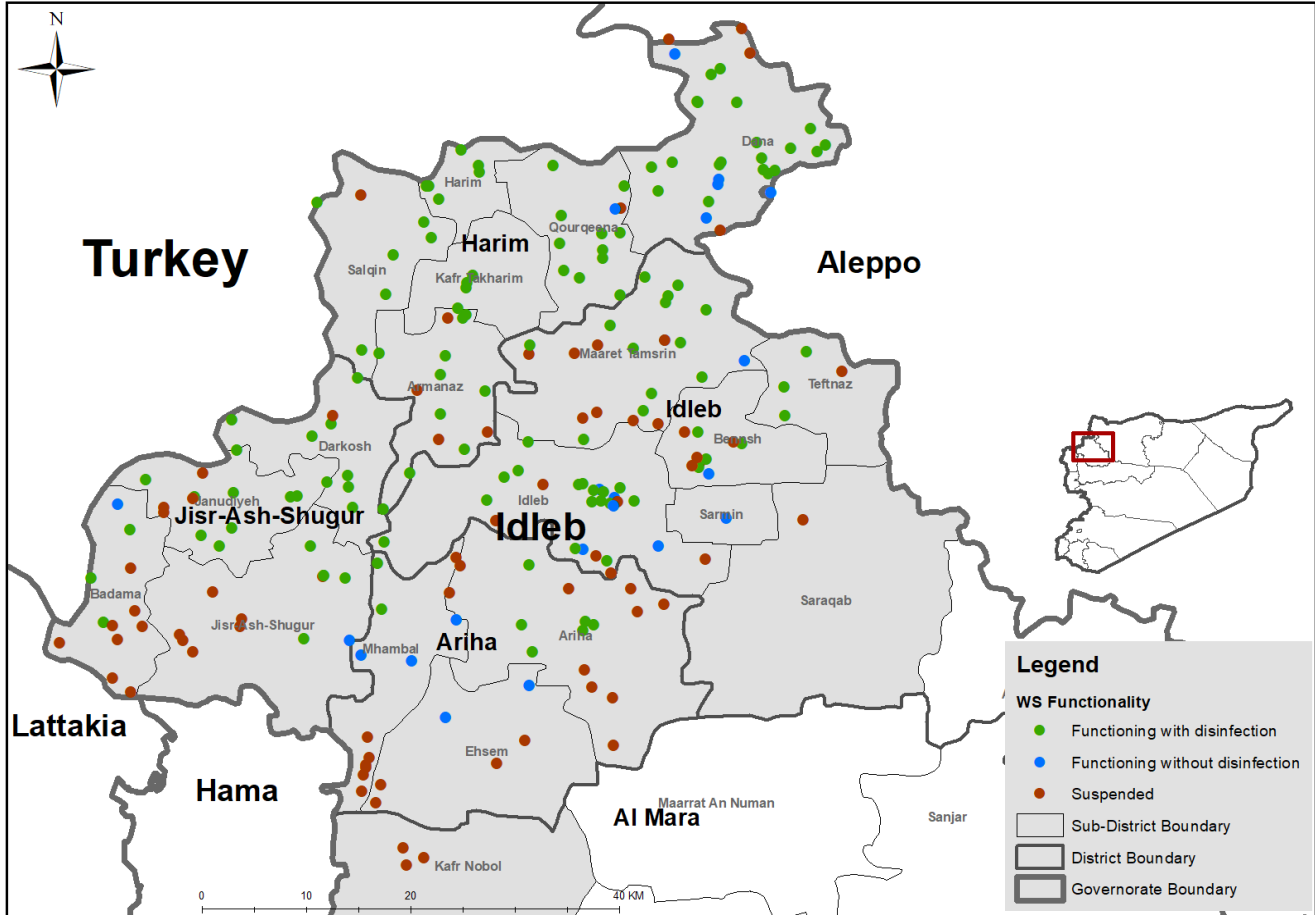
Drinking Water Stations Distribution in Aleppo (Communities Water Stations)



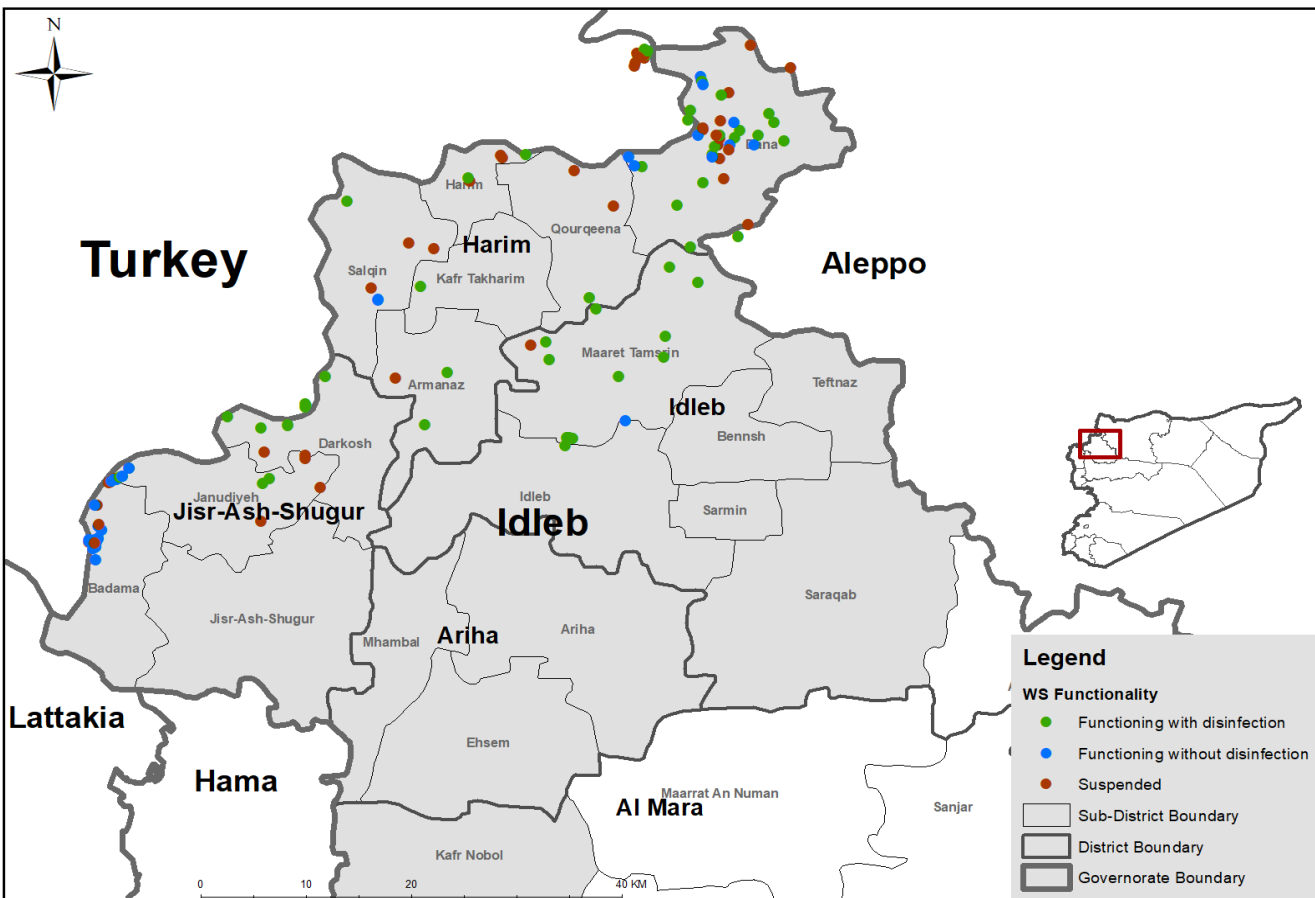
Drinking Water Stations Distribution in Aleppo (Camps Water Stations)



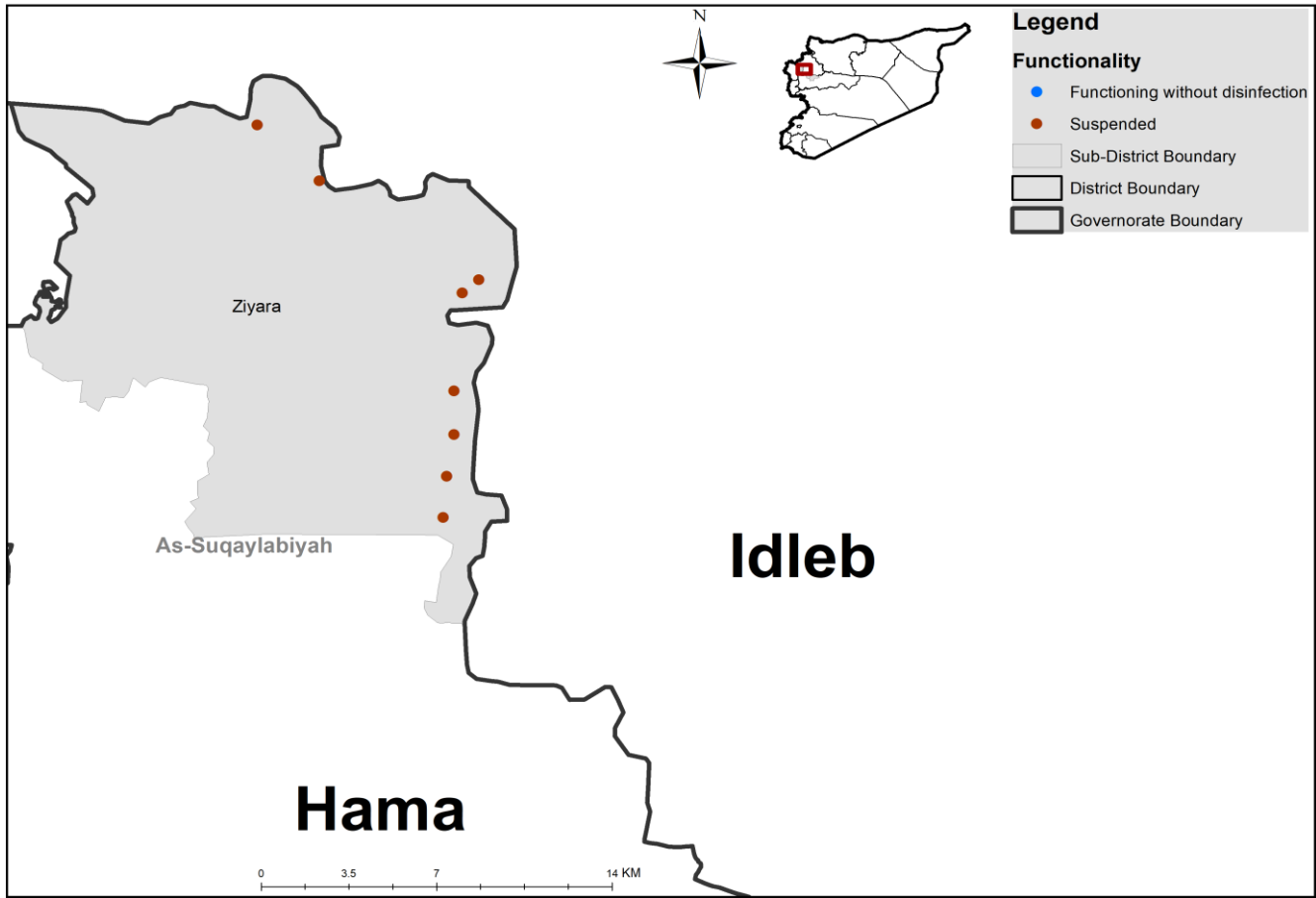
Drinking Water Stations Distribution in Idleb (Communities Water Stations)



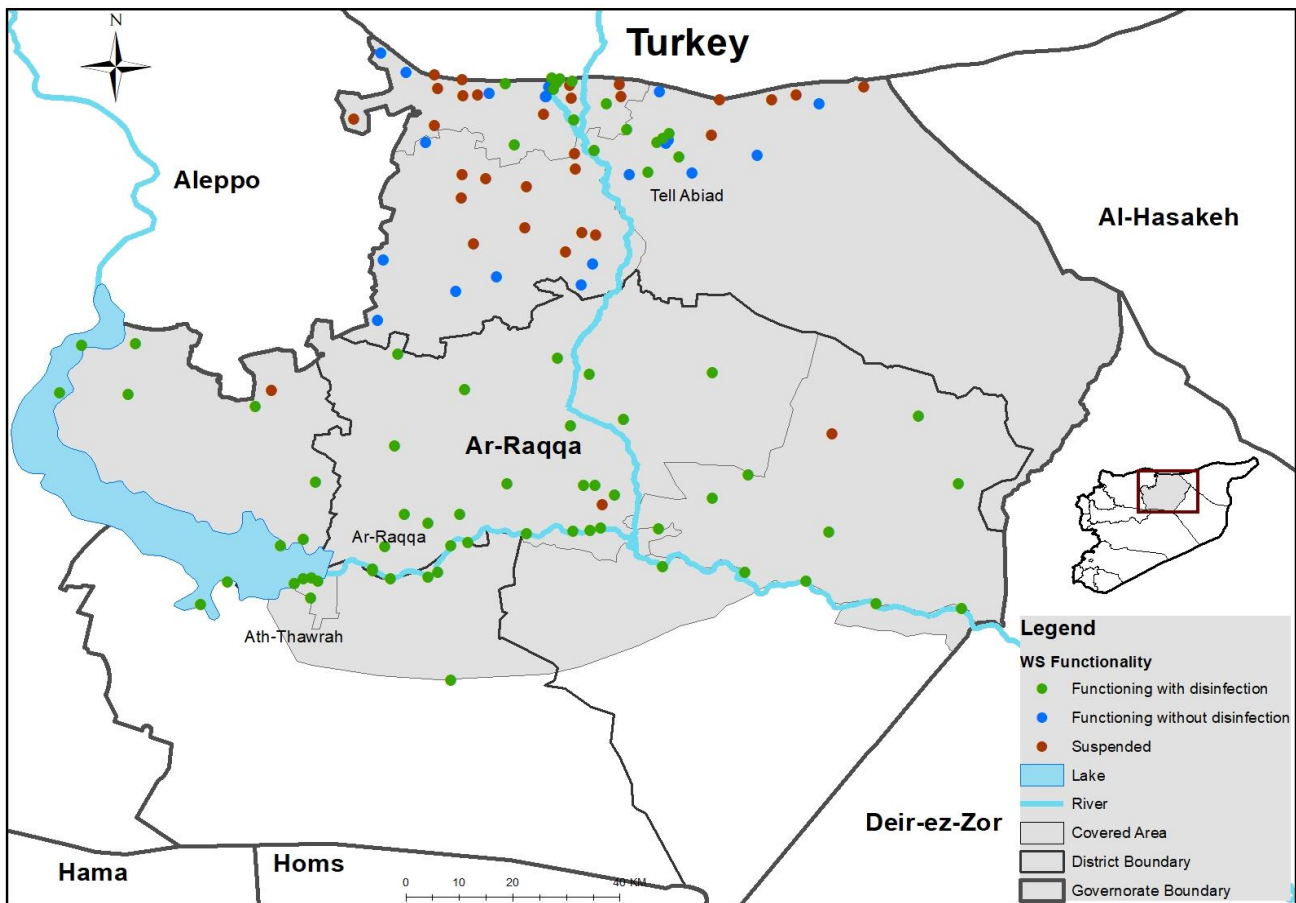
Drinking Water Stations Distribution in Idleb (Camps Water Stations)



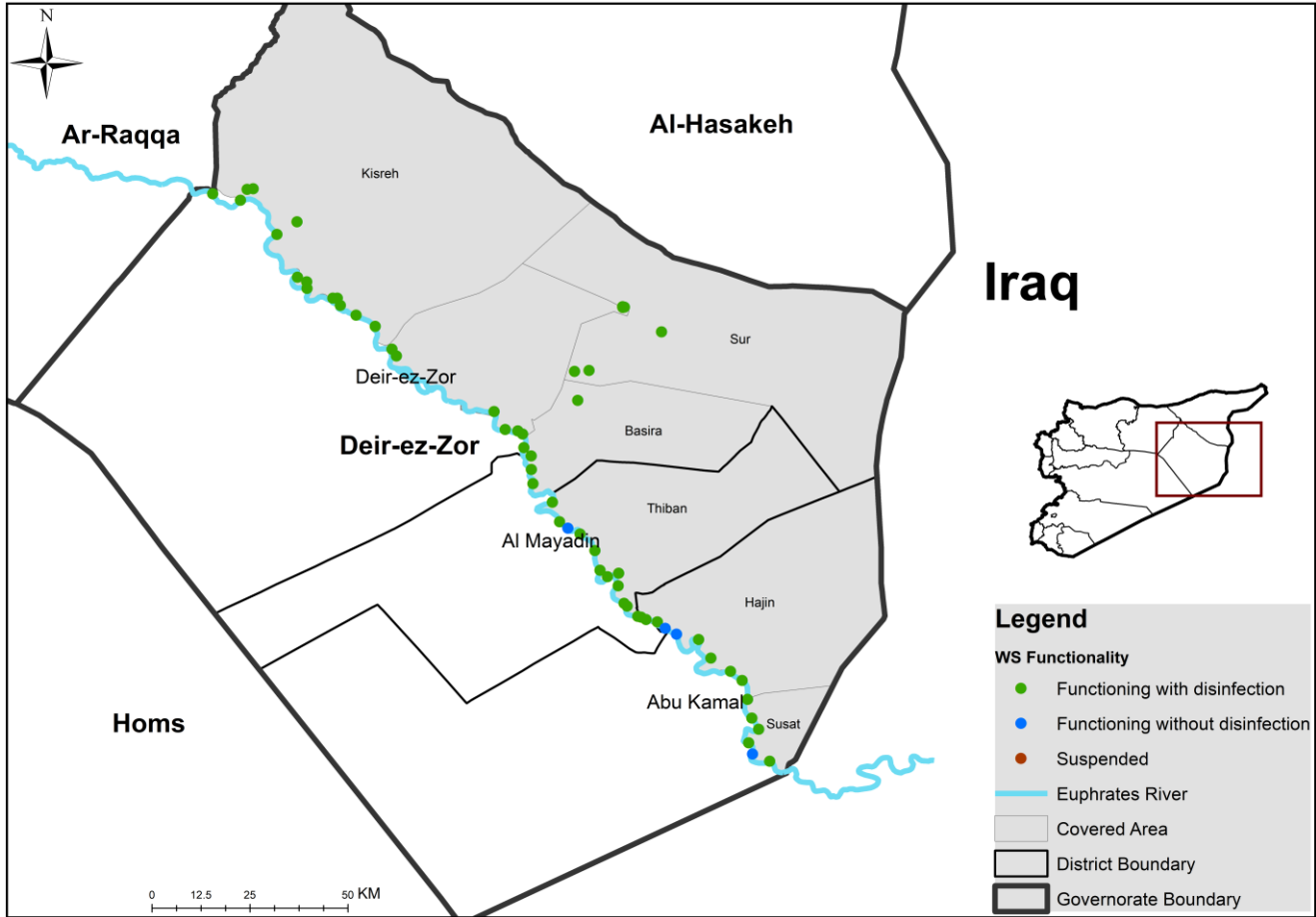
Drinking Water Stations Distribution in Hama



Drinking Water Stations Distribution in Ar-raqqa



Drinking Water Stations Distribution in Deir-ez-Zor



Drinking Water Stations Distribution in Al-Hasakeh

