

WASH Biweekly Bulletin - Syria Early Warning Alert and Response Network

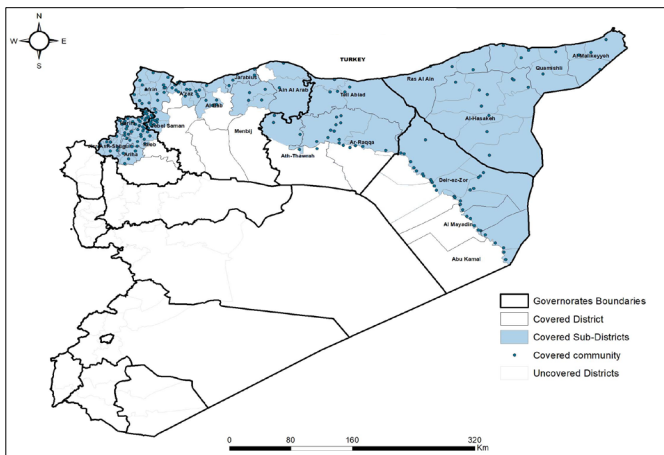
Date: 30 Jun - 13 Jul 2024

Week No. 27-28

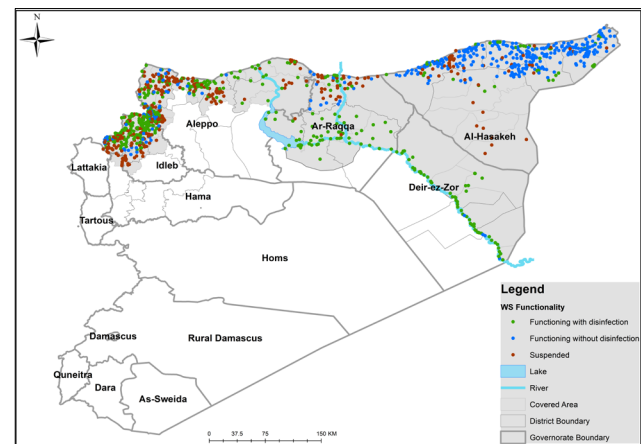
Highlights

- This report covers 1343 public drinking water stations monitored in 6 governorates, 1120 community-based, and 223 camp-based water stations. The percentages in this report represent only the sources monitored.
- Of the monitored drinking water stations, a percentage of 70% (946/1343) were functioning, while 30% (397/1343) of the station were non-functional
- The percentage of the suspended stations due to the lack of operational costs is 21%, and the percentage of the suspended stations due to the need for total-scale maintenance is 21%, of the total suspended water stations.
- Of the water stations, 31% depend on the grid and 30% depend on generators as a electric power, while the rest of the stations depend on other sources (more details below).
- In the areas that their stations are suspended, private agricultural wells are used as an alternative water source, and tankers are used in water transportation.
- The percentage of disinfected water sources was 63% (595/946).
- Of the functioning water stations, percentage of 88% (817/946) delivered water using a piping network, percentage of 08% (64/946) delivered water using water trucking and percentage of 04% (63/946) delivered water using both, and 00% (2/946) delivered water using manhal.
- 12 water quality tests were conducted, 2 of them were contaminated.

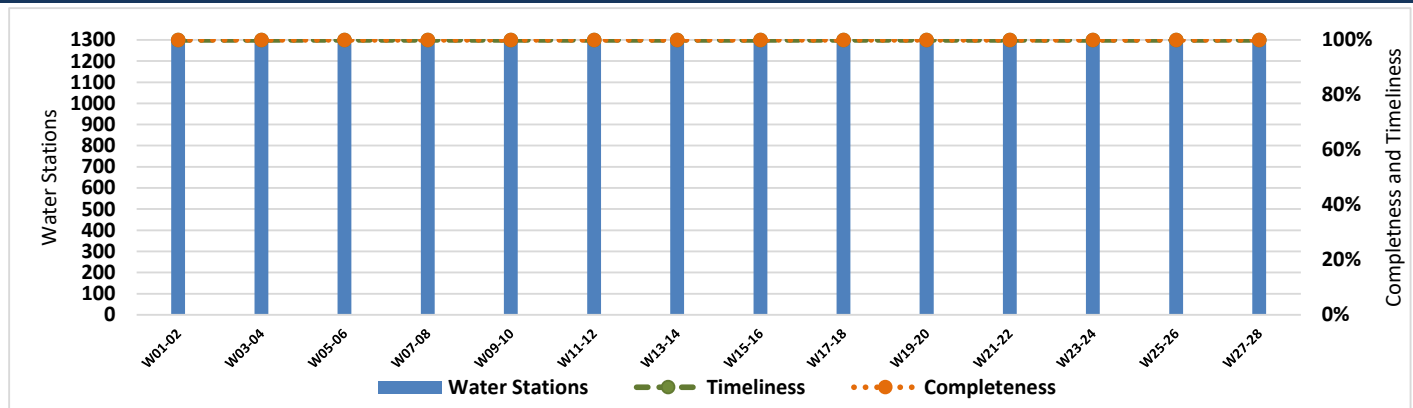
EWARN Coverage



WASH Coverage by EWARN



Completeness and Timeliness of Biweekly Reports



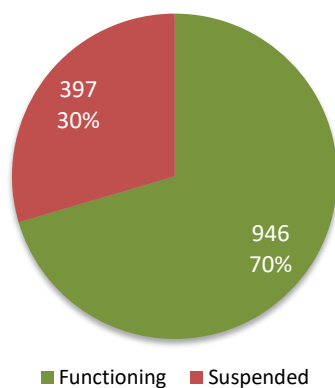
Drinking Water Stations Status in Each Governorate

Governorate	Drinking Water Stations Status		
	Total	Functioning	Percentage
Aleppo (Communities)	262	148	56%
Aleppo (Camps)	51	18	35%
Idleb (Communities)	240	159	66%
Idleb (Camps)	172	124	72%
Hama	8	0	0%
Ar-raqqa	122	94	77%
Deir-ez-Zor	61	60	98%
Al-Hasakeh	427	343	80%
Total	1343	946	70%

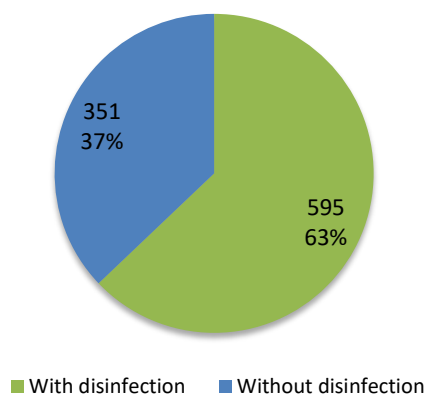
Governorate	Functioning DWS Chlorination Status		
	Total	With disinfection	Percentage
Aleppo (Communities)	148	126	85%
Aleppo (Camps)	18	16	89%
Idleb (Communities)	159	133	84%
Idleb (Camps)	124	85	69%
Hama	0	0	0%
Ar-raqqa	94	83	88%
Deir-ez-Zor	60	49	82%
Al-Hasakeh	343	103	30%
Total	946	595	63%

Drinking Water Stations Status

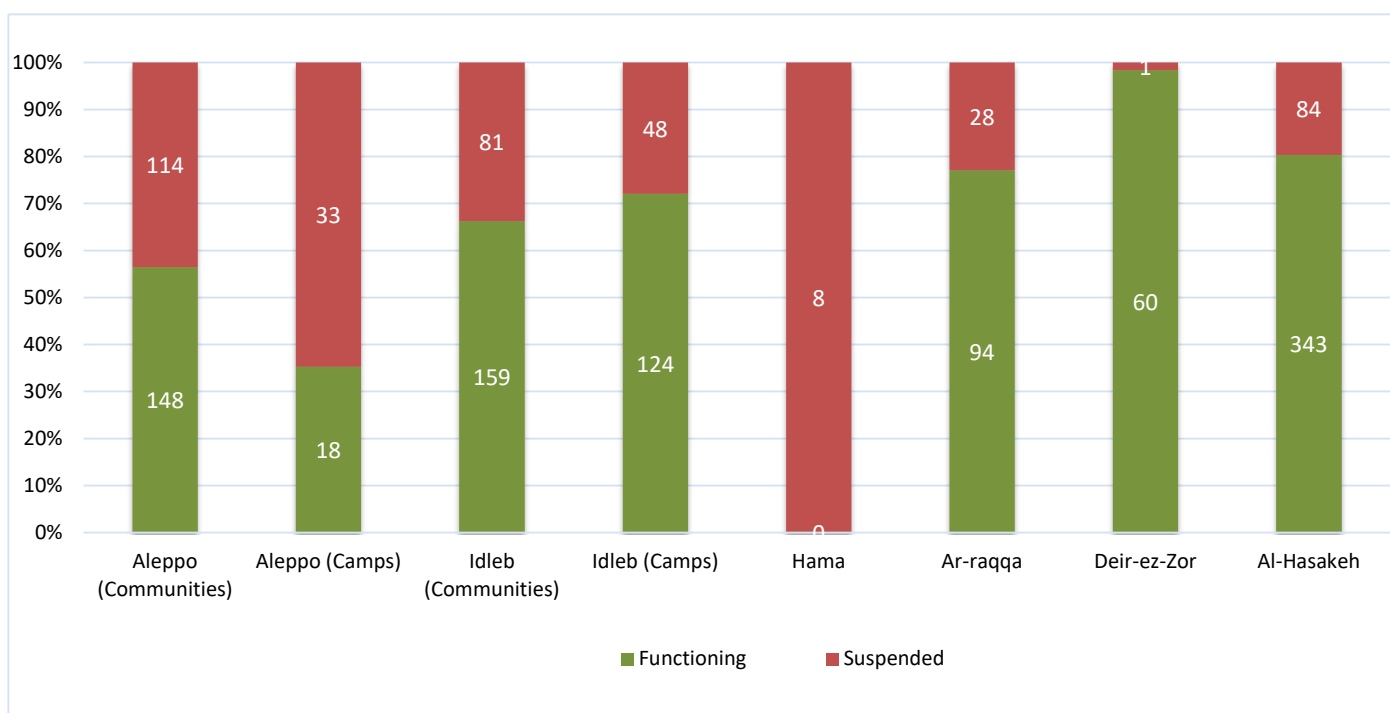
Drinking Water Stations Status



Functioning DWS Chlorination Status

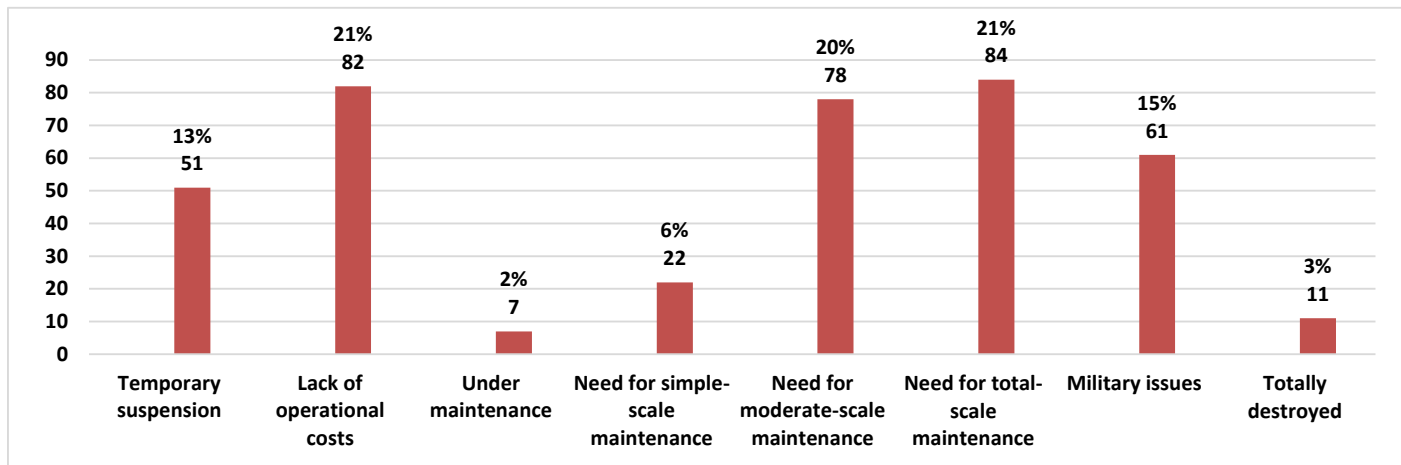


Drinking Water Stations Status in Governorates



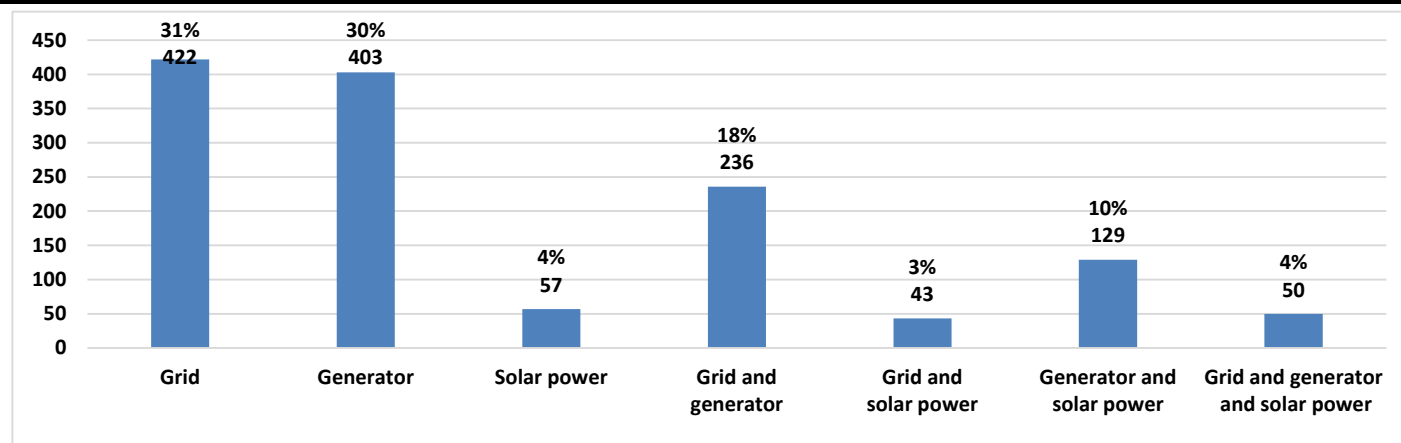
The Reason for Suspension

Governorate	Temporary suspension	Lack of operational costs	Under maintenance	Need for simple-scale maintenance	Need for moderate-scale maintenance	Need for total-scale maintenance	Military issues	Totally destroyed
Aleppo	26	32	3	5	26	39	9	6
Idleb	9	42	4	11	10	39	11	3
Hama	0	0	0	0	0	0	8	0
Ar-raqqqa	2	6	0	3	5	3	9	0
Deir-ez-Zor	0	0	0	0	0	0	1	0
Al-Hasakeh	14	2	0	3	37	3	23	2
Total	51	82	7	22	78	84	61	11

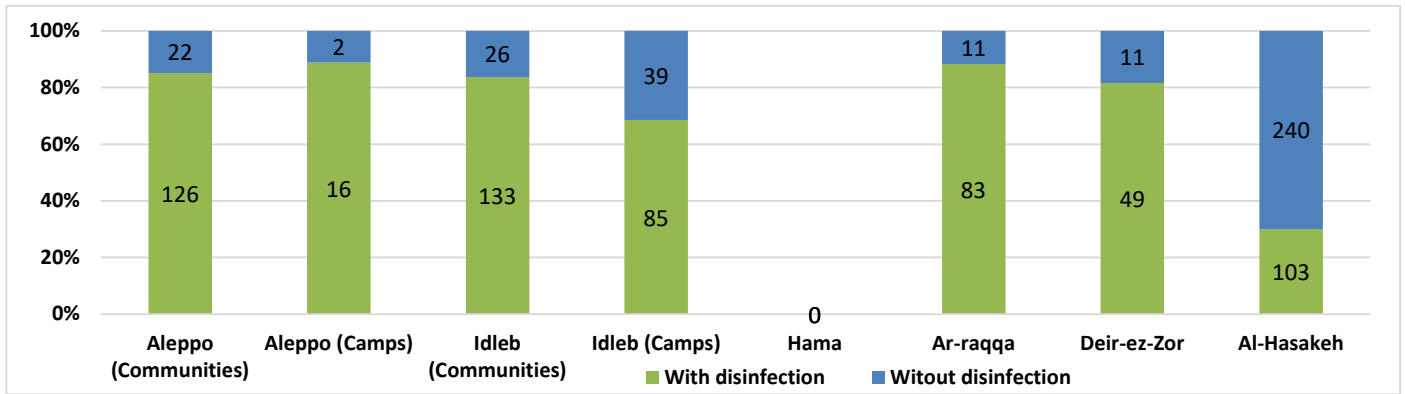


Source of the Electric Power

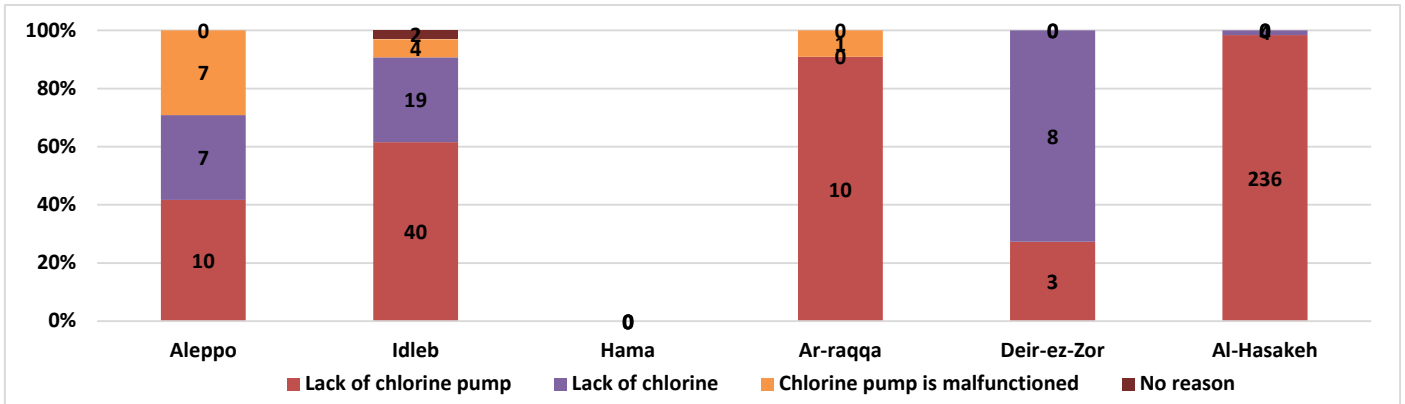
Governorate	Grid	Generator	Solar power	Grid and generator	Grid and solar power	Generator and solar power	Grid and generator and solar power
Aleppo	21	163	15	44	4	45	21
Idleb	9	211	35	54	6	76	18
Hama	0	8	0	0	0	0	0
Ar-raqqqa	74	2	5	28	5	6	2
Deir-ez-Zor	0	12	0	49	0	0	0
Al-Hasakeh	318	7	2	61	28	2	9
Total	422	403	57	236	43	129	50



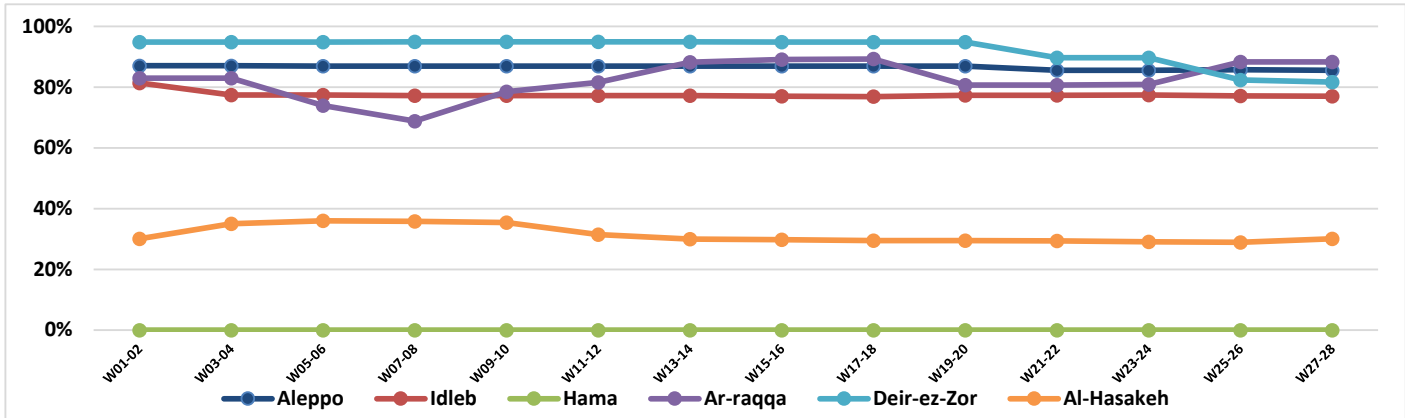
Functioning Drinking Water Stations Chlorination Status



The Reason for not Chlorination

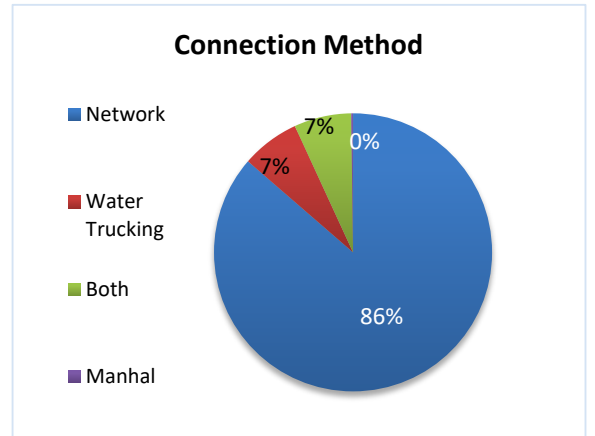


Chlorination Status Over Weeks

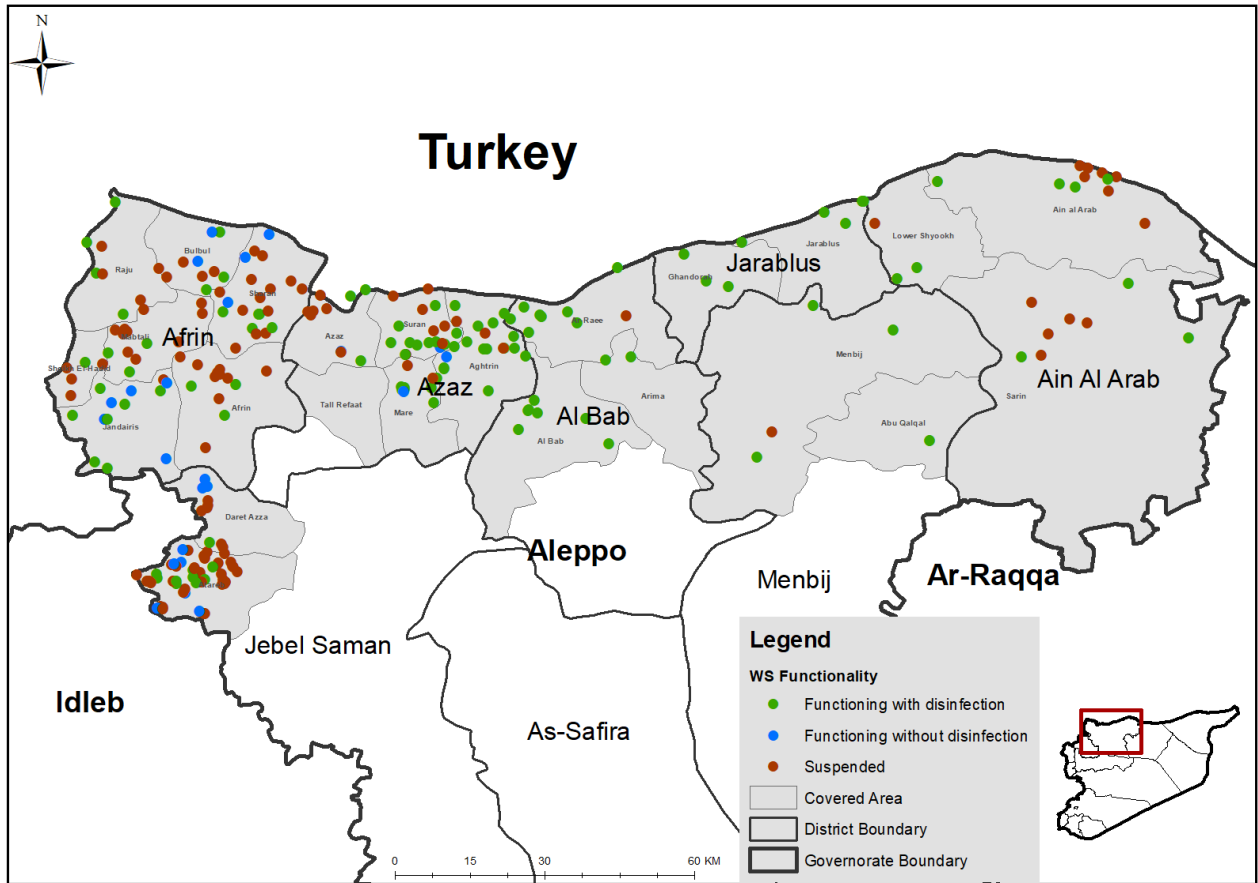


Connection Method

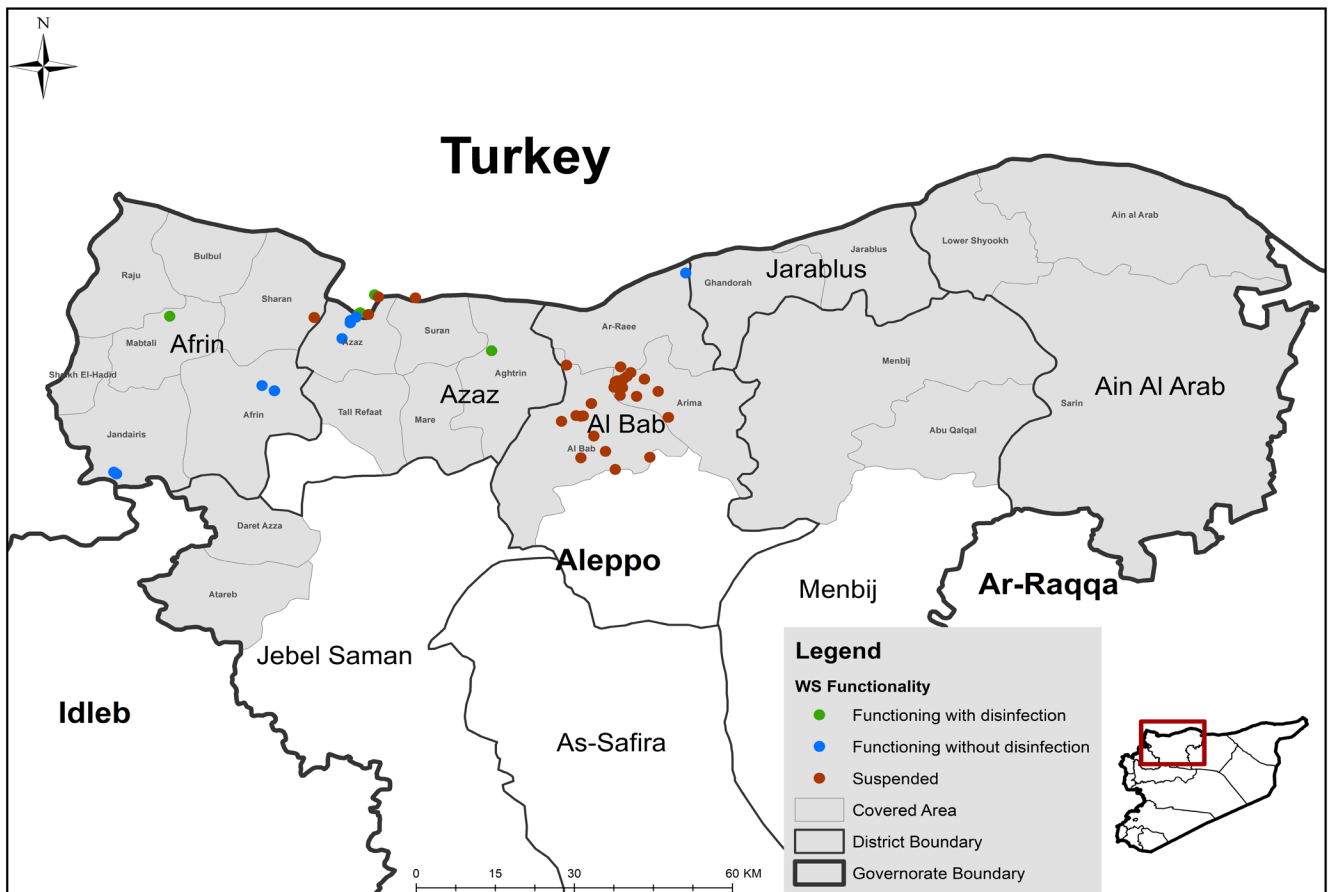
Governorate	Functioning DWS	Method			
		Network	Water Trucking	Both	Manhal
Aleppo	166	147	3	14	2
Idleb	283	182	54	47	0
Hama	0	0	0	0	0
Ar-raqqa	94	91	2	1	0
Deir-ez-Zor	60	56	4	0	0
Al-Hasakeh	343	341	1	1	0
Total	946	817	64	63	2



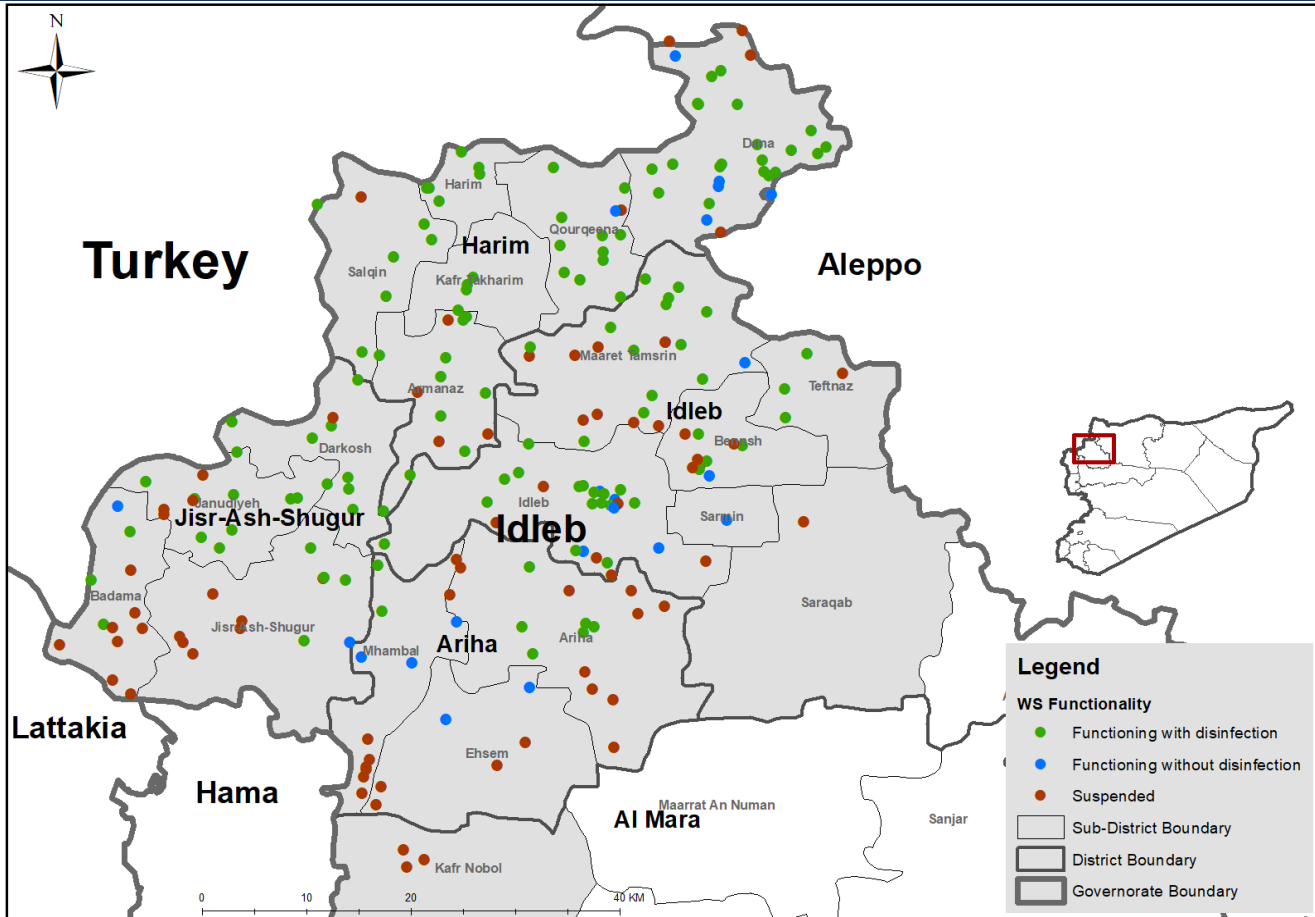
Drinking Water Stations Distribution in Aleppo (Communities Water Stations)



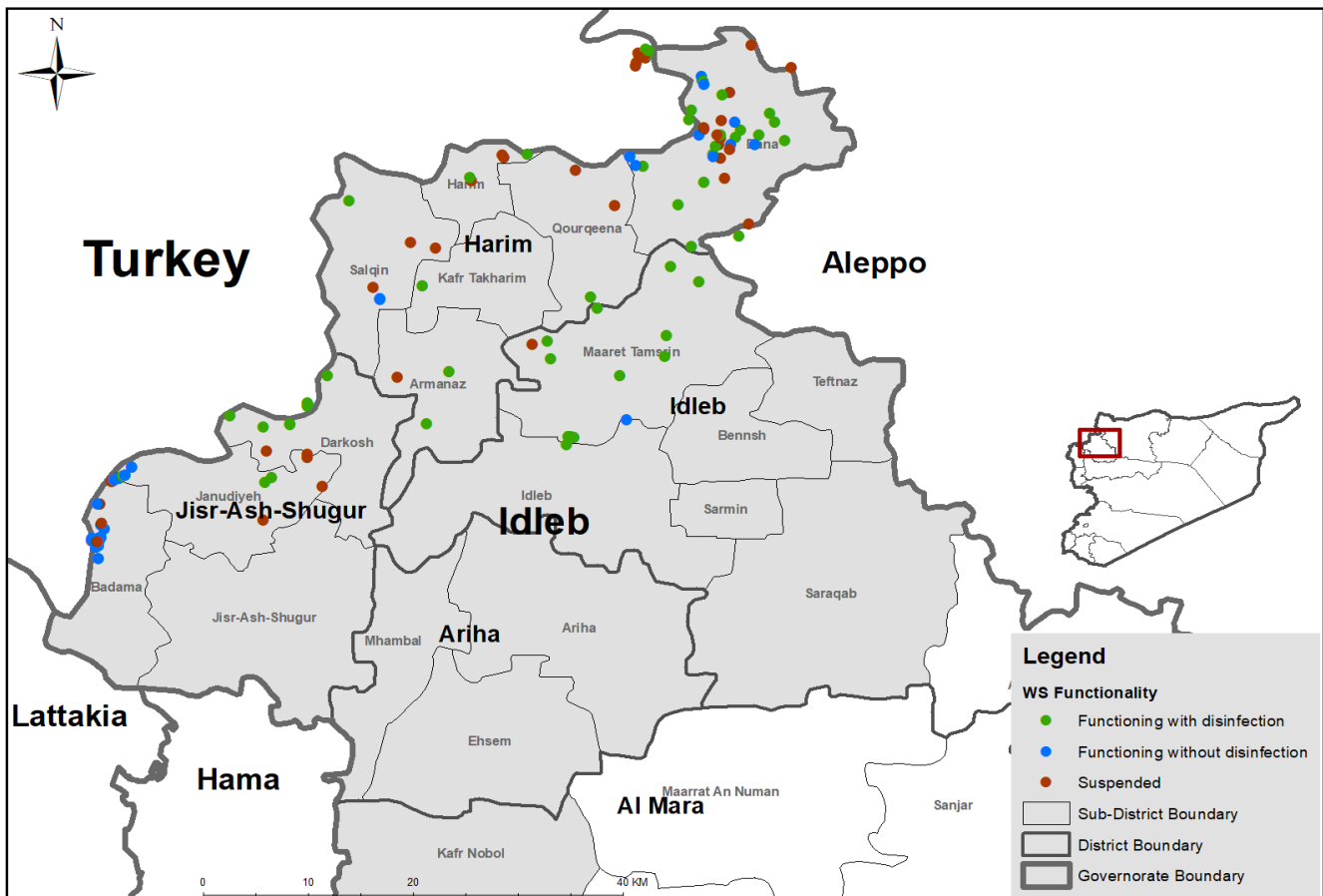
Drinking Water Stations Distribution in Aleppo (Camps Water Stations)



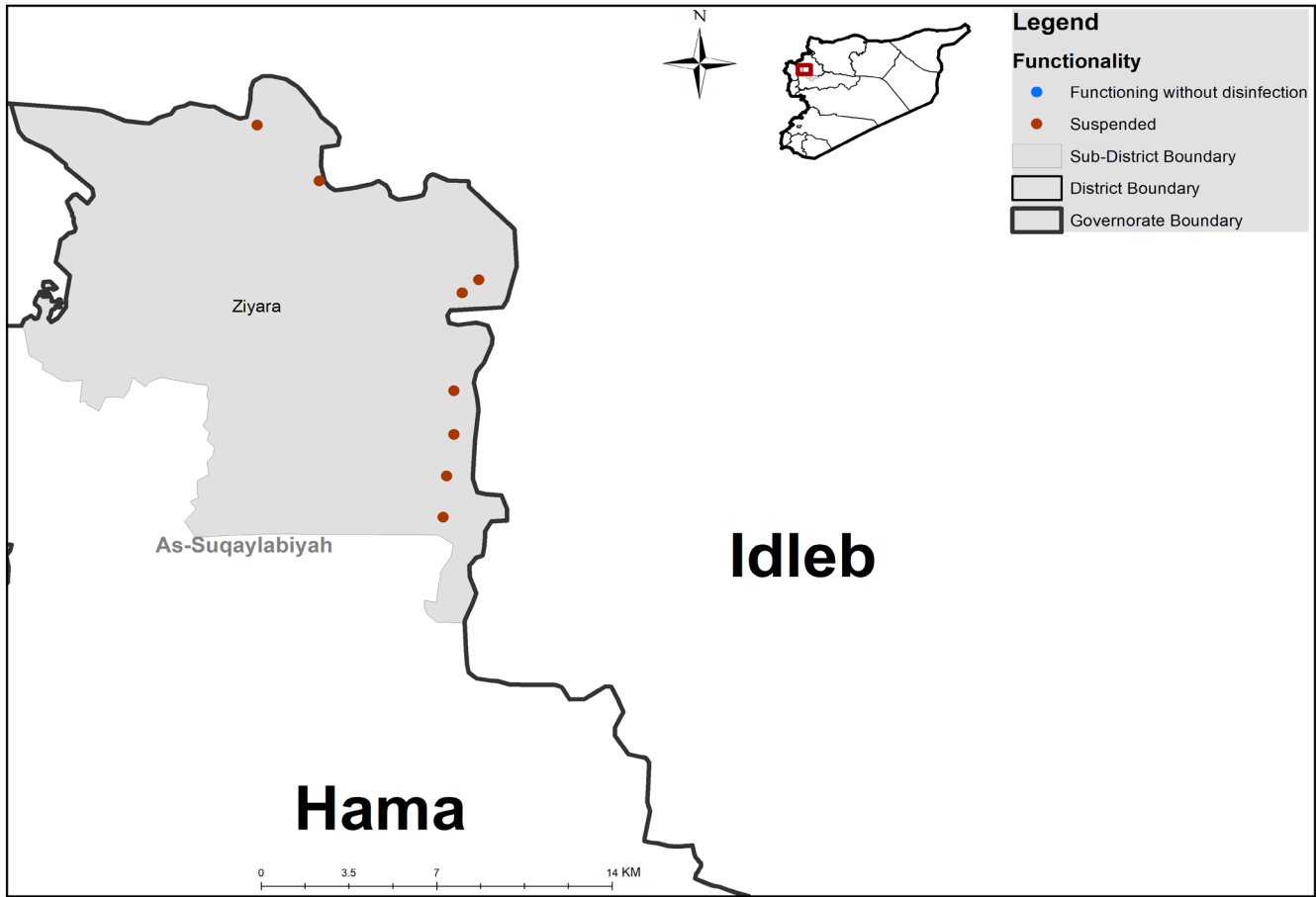
Drinking Water Stations Distribution in Idleb (Communities Water Stations)



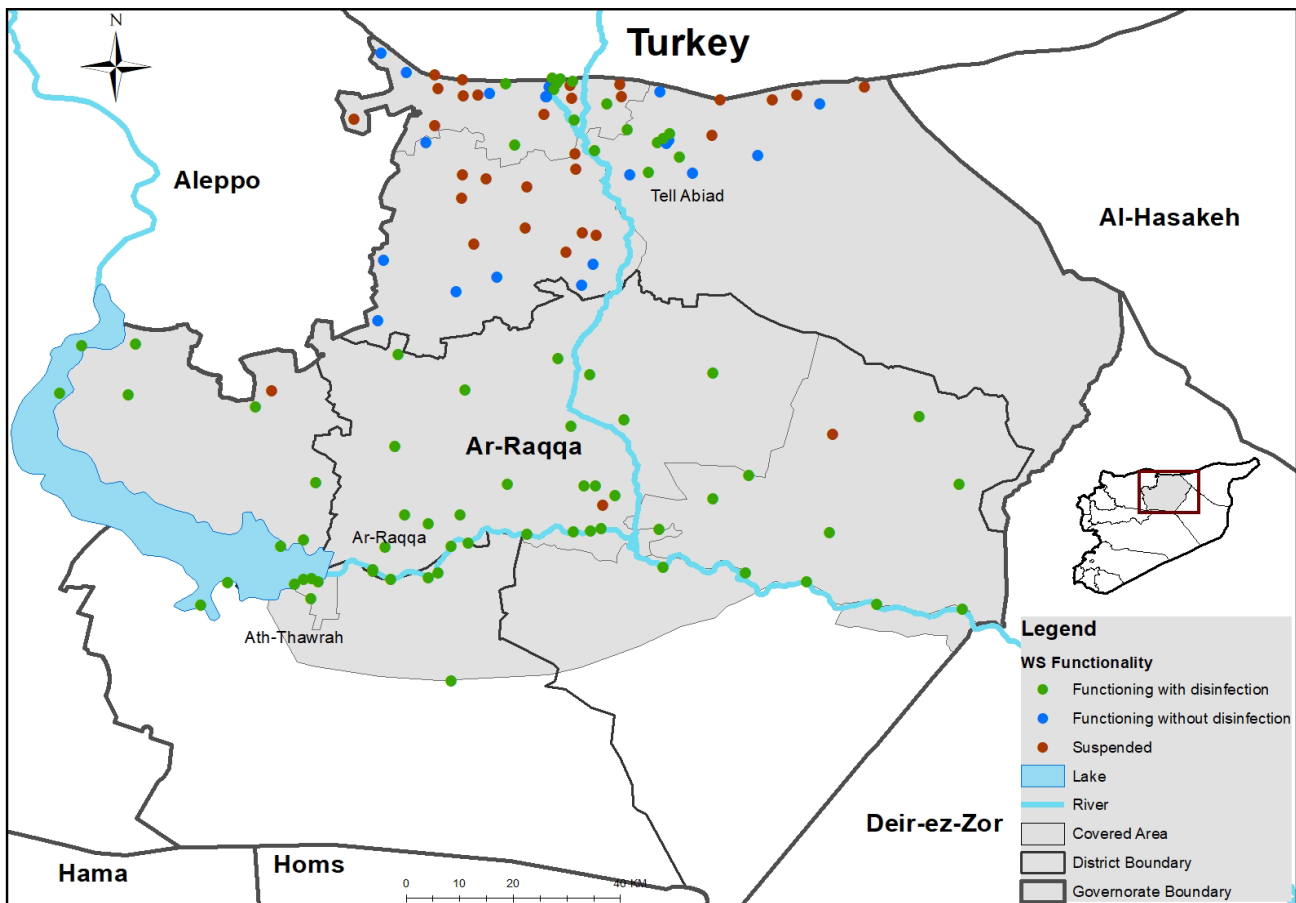
Drinking Water Stations Distribution in Idleb (Camps Water Stations)



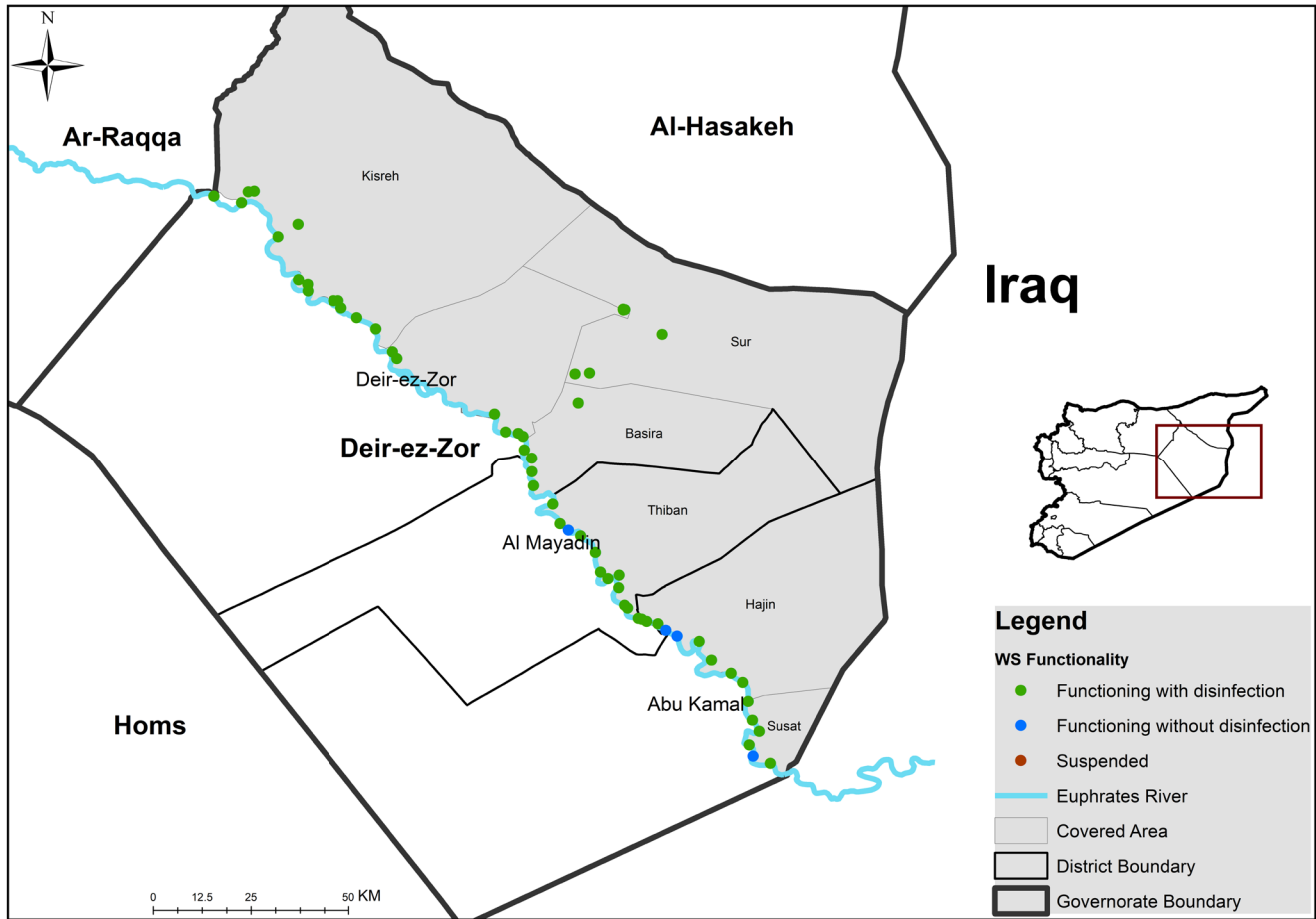
Drinking Water Stations Distribution in Hama



Drinking Water Stations Distribution in Ar-raqqa



Drinking Water Stations Distribution in Deir-ez-Zor



Drinking Water Stations Distribution in Al-Hasakeh

