

## WASH Biweekly Bulletin - Syria

### Early Warning Alert and Response Network

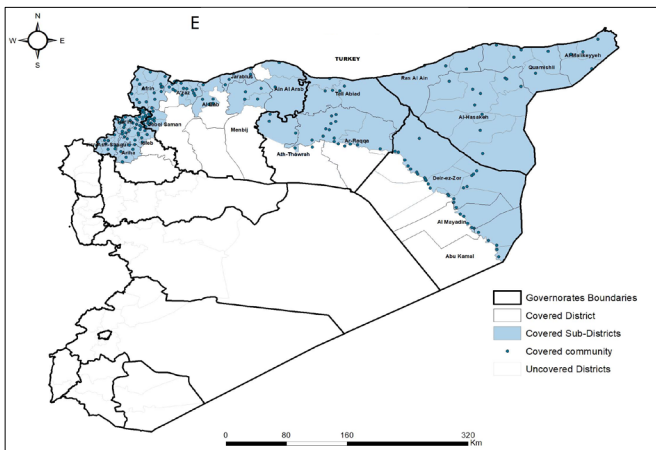
Date: 29 Dec - 11 Jan 2025

Week No. 01-02

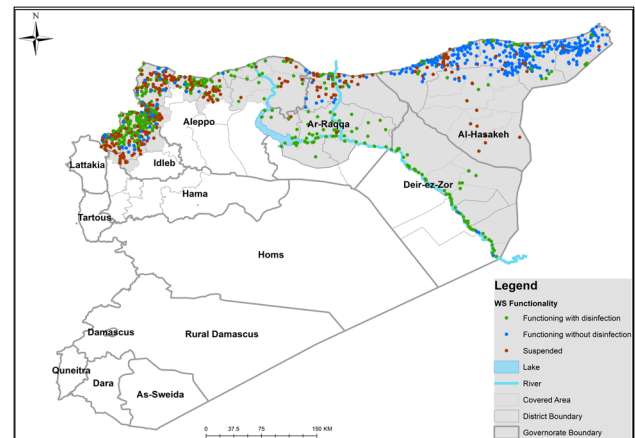
#### Highlights

- This report covers 1437 public drinking water stations monitored in 6 governorates, 1205 community-based, and 232 camp-based water stations. The percentages in this report represent only the sources monitored.
- Of the monitored drinking water stations, a percentage of 67% (967/1437) were functioning, while 33% (470/1437) of the station were non-functional
- The percentage of the suspended stations due to the lack of operational costs is 14%, and the percentage of the suspended stations due to the need for total-scale maintenance is 35%, of the total suspended water stations.
- Of the water stations, 29% depend on the grid and 33% depend on generators as a electric power, while the rest of the stations depend on other sources (more details below).
- In the areas that their stations are suspended, private agricultural wells are used as an alternative water source, and tankers are used in water transportation.
- The percentage of disinfected water sources was 62% (598/967).
- Of the functioning water stations, percentage of 88% (843/967) delivered water using a piping network, percentage of 08% (62/967) delivered water using water trucking and percentage of 04% (60/967) delivered water using both, and 00% (2/967) delivered water using manhal.
- 7 water quality tests were conducted, 2 of them were contaminated.

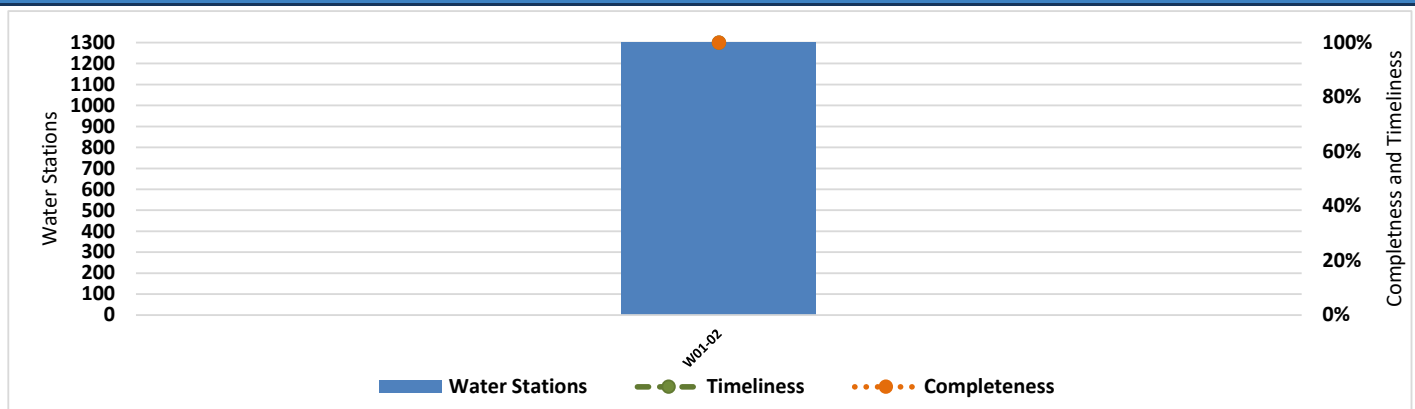
#### EWARN Coverage



#### WASH Coverage by EWARN



#### Completeness and Timeliness of Biweekly Reports



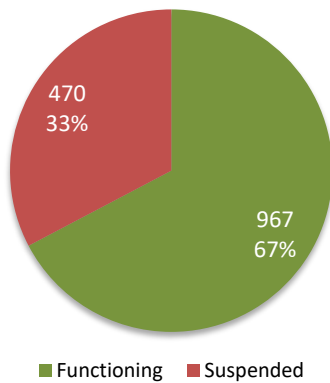
## Drinking Water Stations Status in Each Governorate

Governorate	Drinking Water Stations Status		
	Total	Functioning	Percentage
Aleppo (Communities)	269	155	58%
Aleppo (Camps)	53	15	28%
Idleb (Communities)	318	160	50%
Idleb (Camps)	179	127	71%
Hama	8	0	0%
Ar-raqqa	122	105	86%
Deir-ez-Zor	61	60	98%
Al-Hasakeh	427	345	81%
<b>Total</b>	<b>1437</b>	<b>967</b>	<b>67%</b>

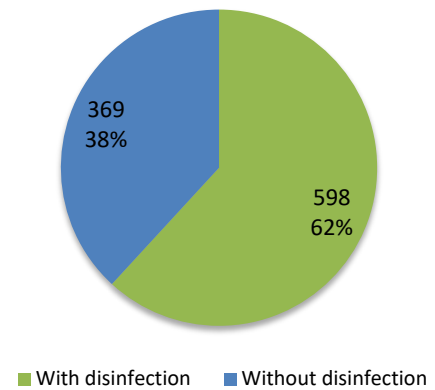
Governorate	Functioning DWS Chlorination Status		
	Total	With disinfection	Percentage
Aleppo (Communities)	155	129	83%
Aleppo (Camps)	15	11	73%
Idleb (Communities)	160	135	84%
Idleb (Camps)	127	85	67%
Hama	0	0	0%
Ar-raqqa	105	78	74%
Deir-ez-Zor	60	57	95%
Al-Hasakeh	345	103	30%
<b>Total</b>	<b>967</b>	<b>598</b>	<b>62%</b>

## Drinking Water Stations Status

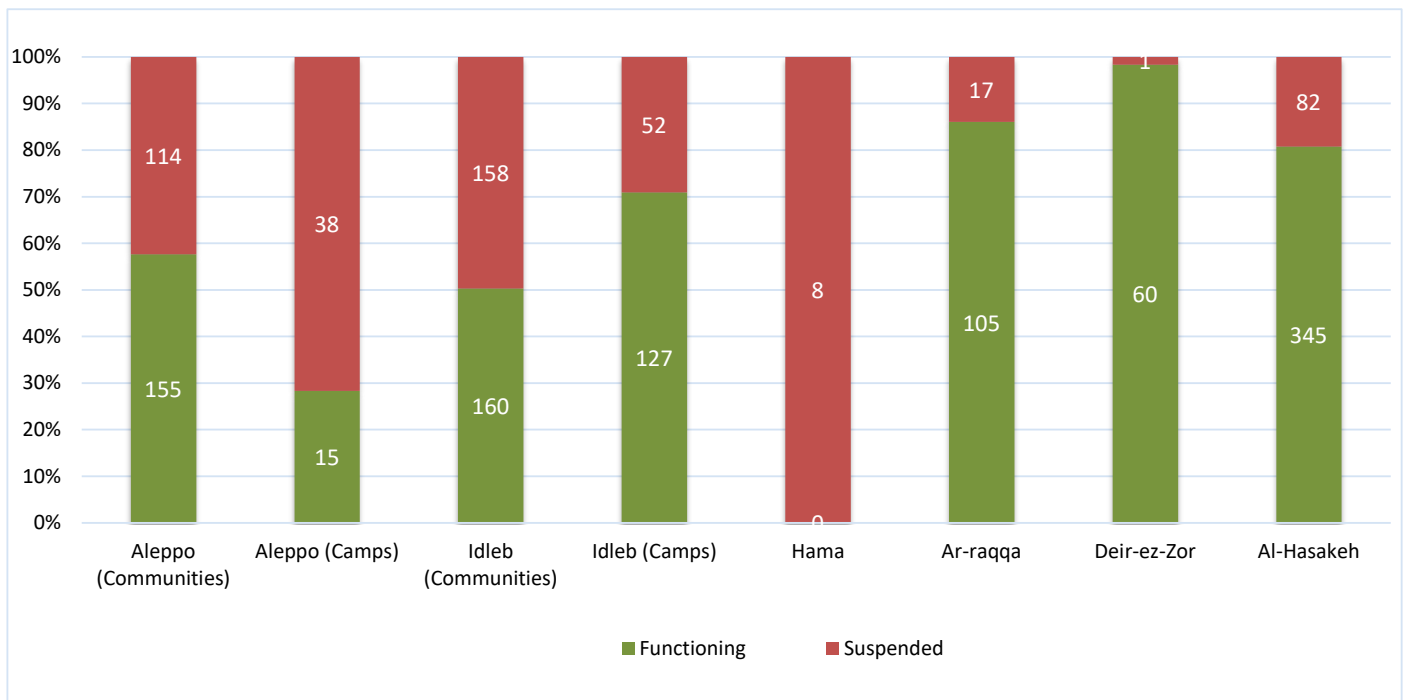
Drinking Water Stations Status



Functioning DWS Chlorination Status

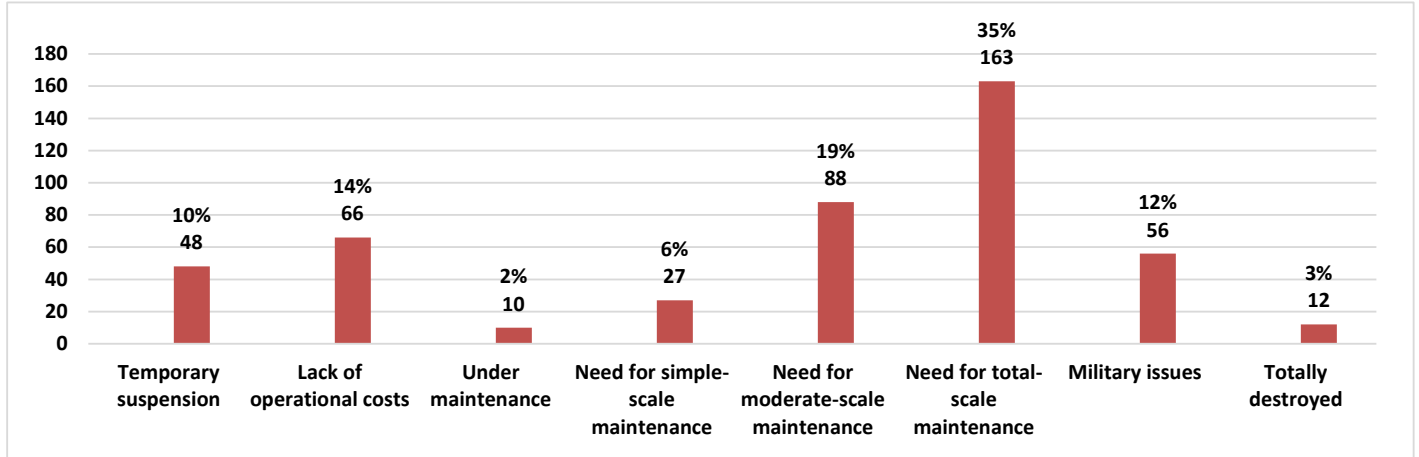


## Drinking Water Stations Status in Governorates



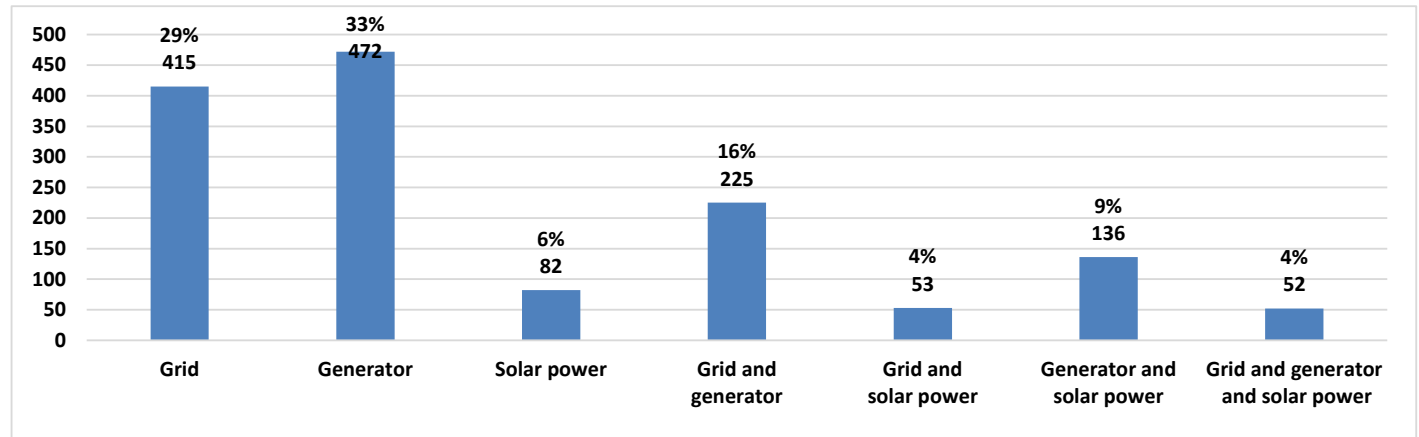
## The Reason for Suspension

Governorate	Temporary suspension	Lack of operational costs	Under maintenance	Need for simple-scale maintenance	Need for moderate-scale maintenance	Need for total-scale maintenance	Military issues	Totally destroyed
Aleppo	24	22	4	10	37	39	9	7
Idleb	8	43	6	10	13	119	8	3
Hama	0	0	0	0	0	0	8	0
Ar-raqqa	2	0	0	2	4	2	7	0
Deir-ez-Zor	0	0	0	0	0	0	1	0
Al-Hasakeh	14	1	0	5	34	3	23	2
<b>Total</b>	<b>48</b>	<b>66</b>	<b>10</b>	<b>27</b>	<b>88</b>	<b>163</b>	<b>56</b>	<b>12</b>

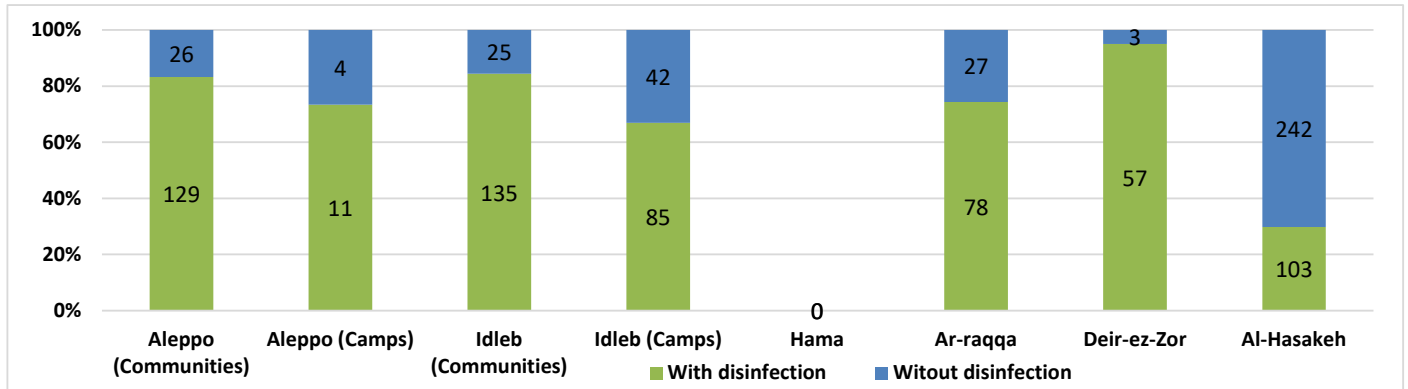


## Source of the Electric Power

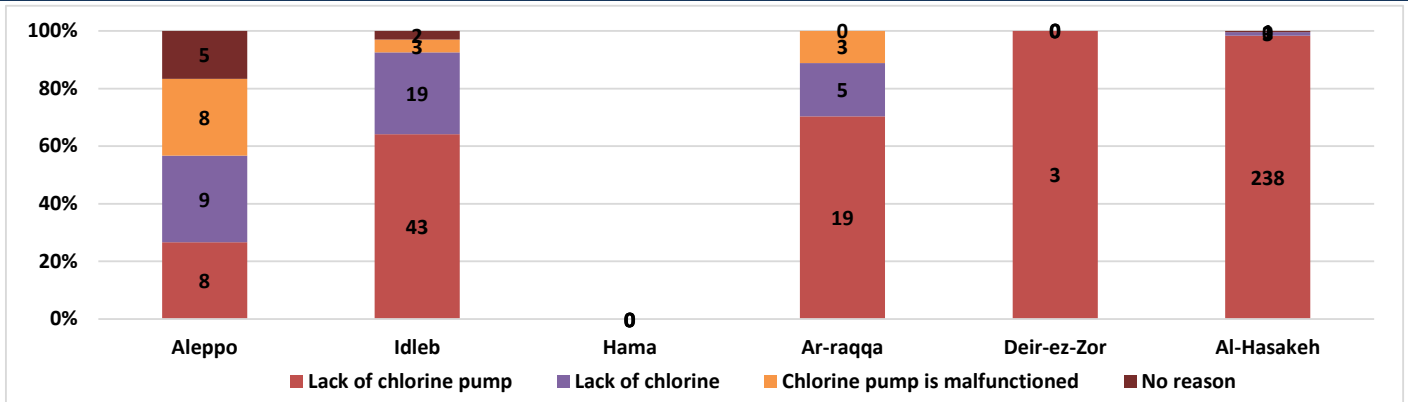
Governorate	Grid	Generator	Solar power	Grid and generator	Grid and solar power	Generator and solar power	Grid and generator and solar power
Aleppo	23	158	20	44	8	48	21
Idleb	11	286	39	54	7	79	19
Hama	0	8	0	0	0	0	0
Ar-raqqa	66	1	21	18	6	7	3
Deir-ez-Zor	0	12	0	49	0	0	0
Al-Hasakeh	315	7	2	60	32	2	9
<b>Total</b>	<b>415</b>	<b>472</b>	<b>82</b>	<b>225</b>	<b>53</b>	<b>136</b>	<b>52</b>



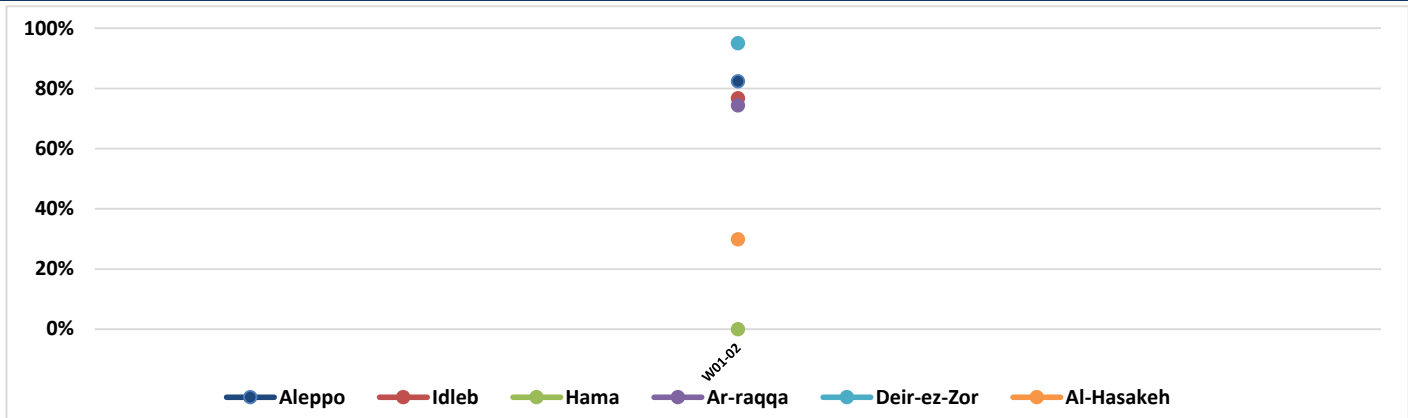
## Functioning Drinking Water Stations Chlorination Status



## The Reason for not Chlorination

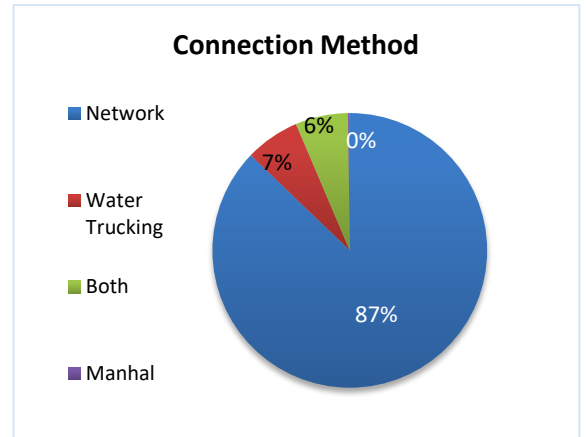


## Chlorination Status Over Weeks

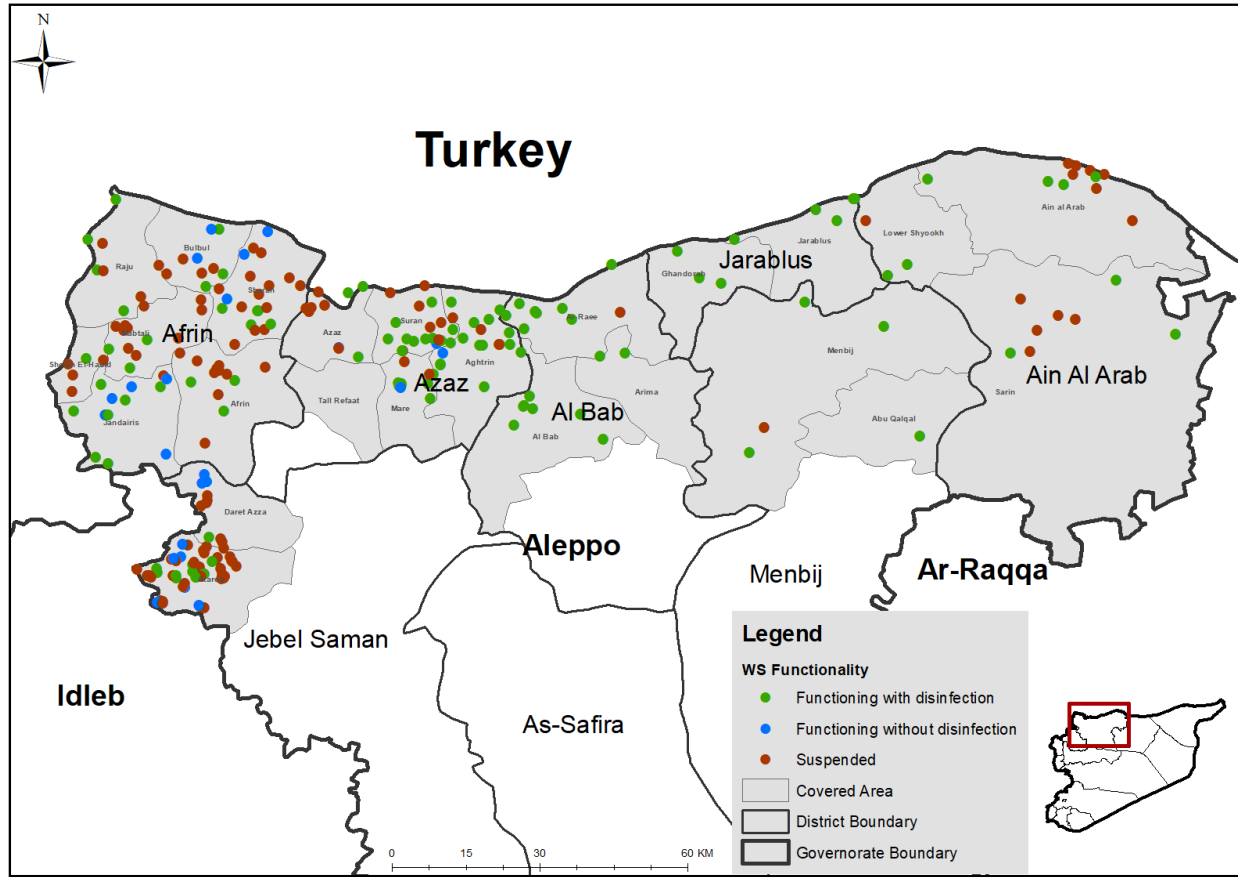


## Connection Method

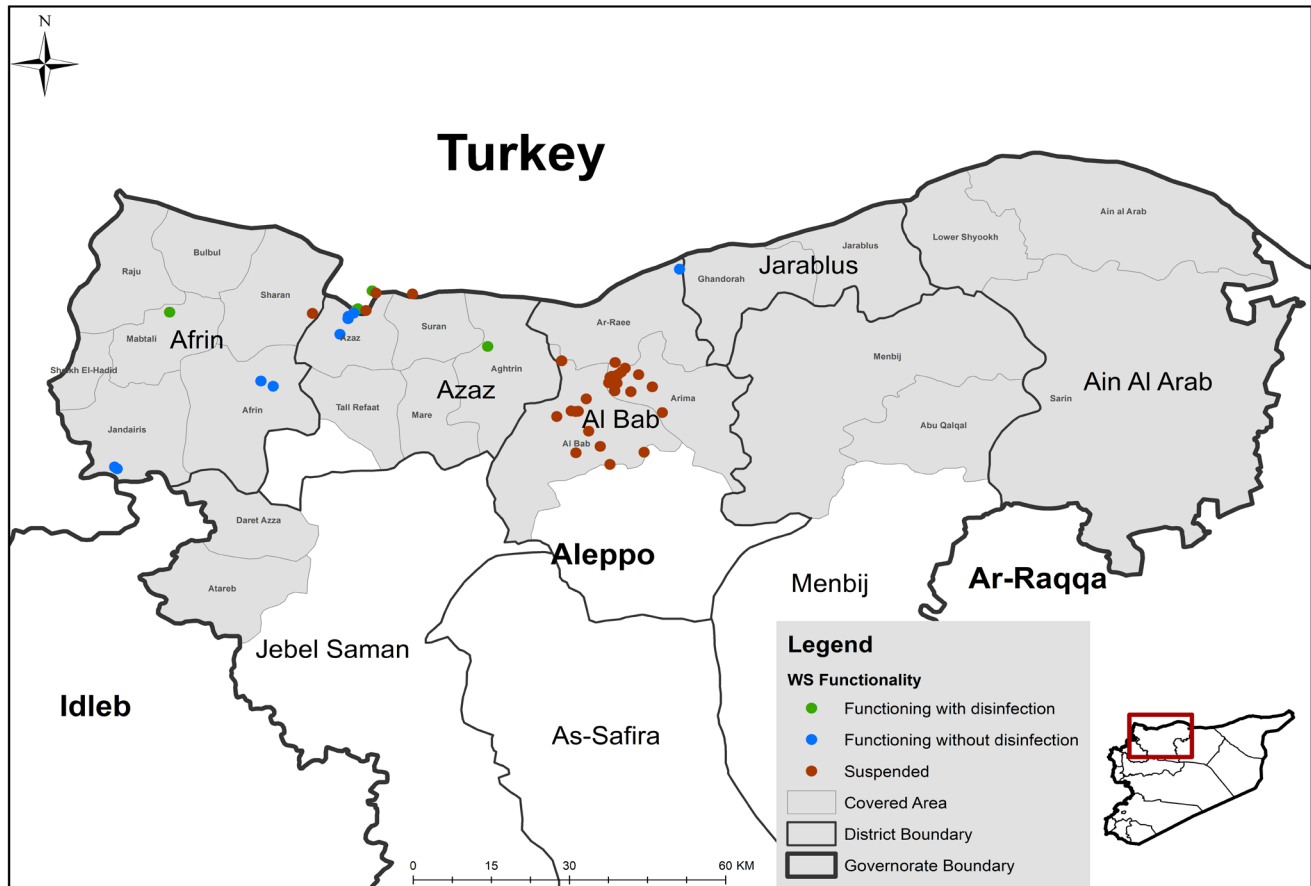
Governorate	Functioning DWS	Method			
		Network	Water Trucking	Both	Manhal
Aleppo	170	155	2	11	2
Idleb	287	187	53	47	0
Hama	0	0	0	0	0
Ar-raqqa	105	102	2	1	0
Deir-ez-Zor	60	56	4	0	0
Al-Hasakeh	345	343	1	1	0
<b>Total</b>	<b>967</b>	<b>843</b>	<b>62</b>	<b>60</b>	<b>2</b>



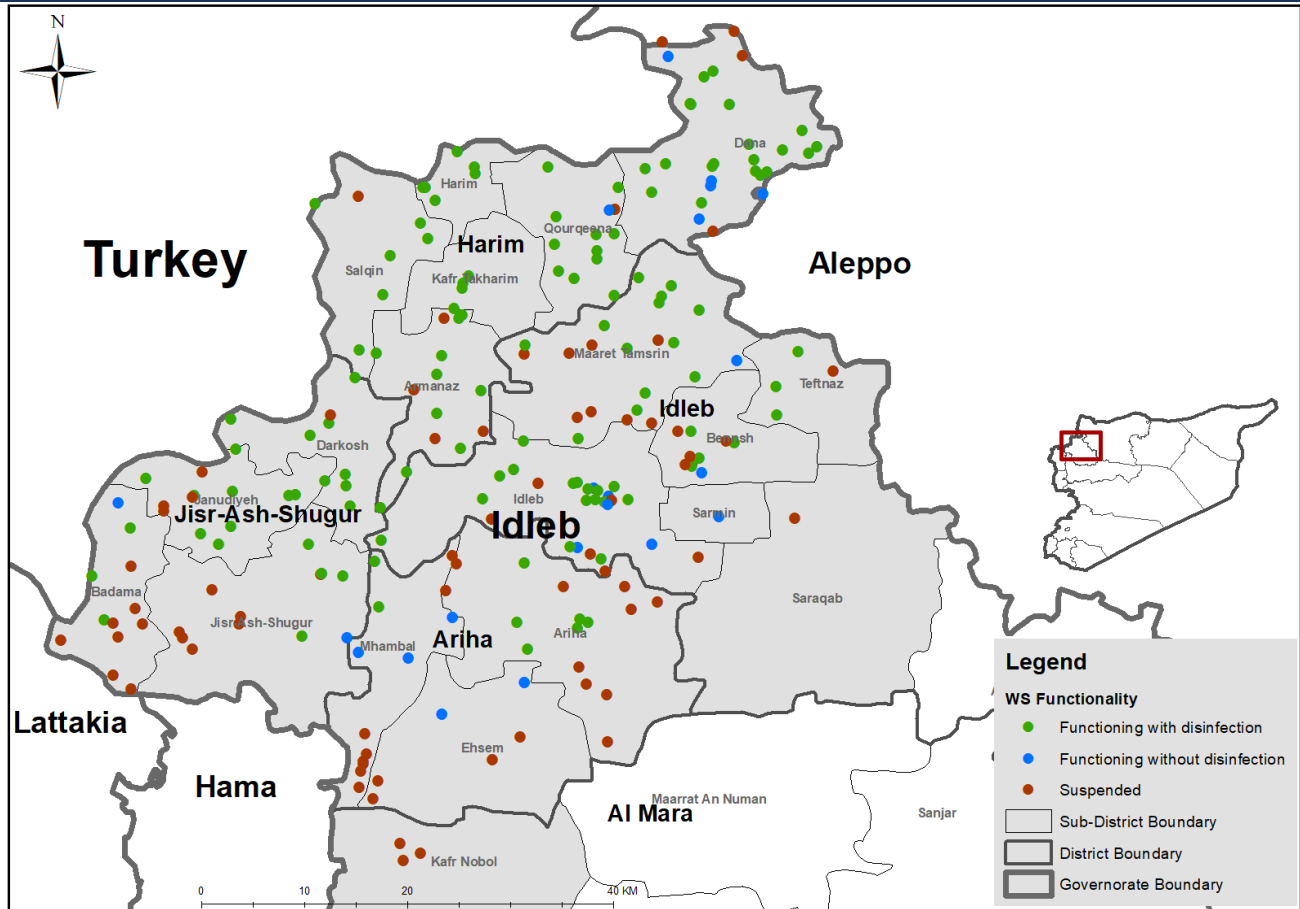
## Drinking Water Stations Distribution in Aleppo (Communities Water Stations)



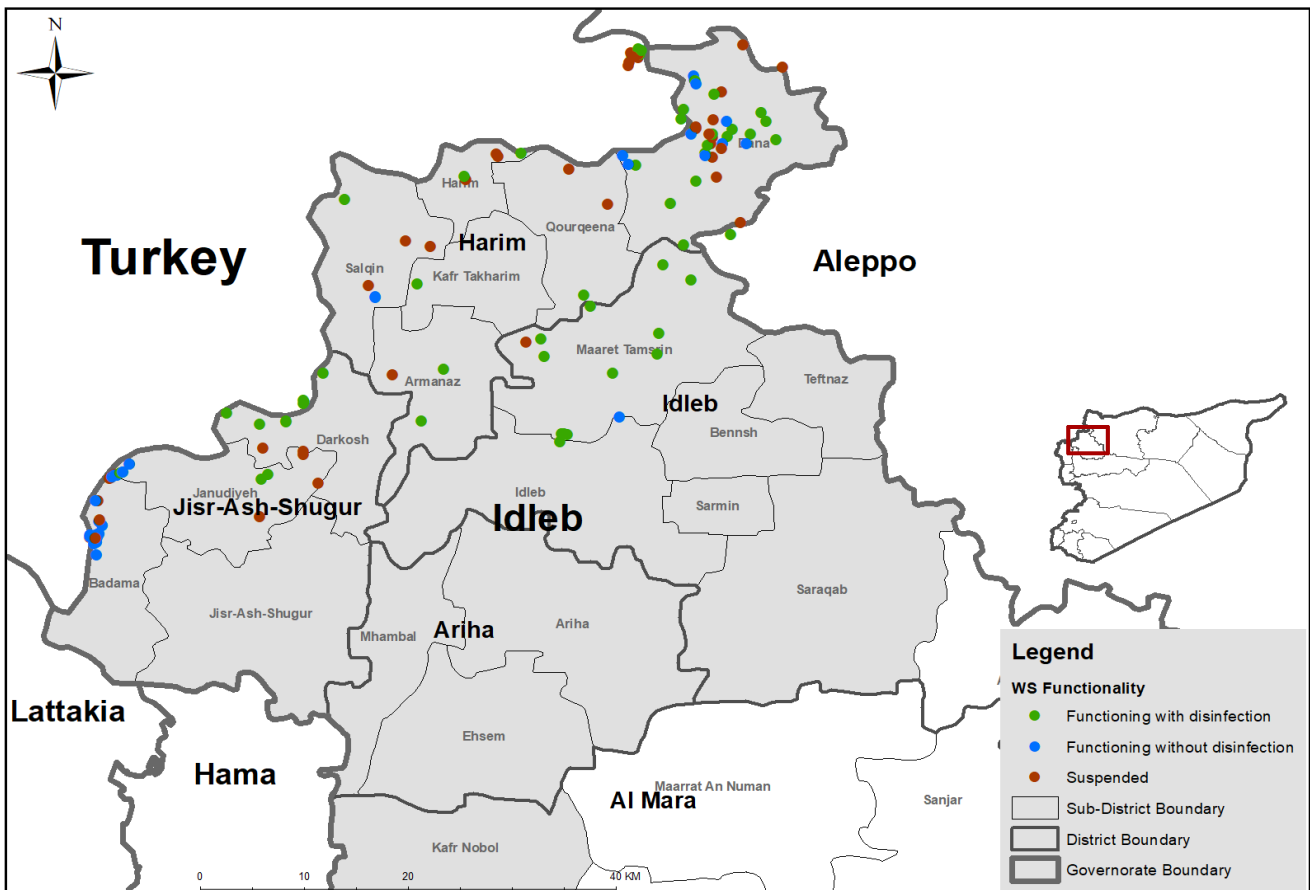
## Drinking Water Stations Distribution in Aleppo (Camps Water Stations)



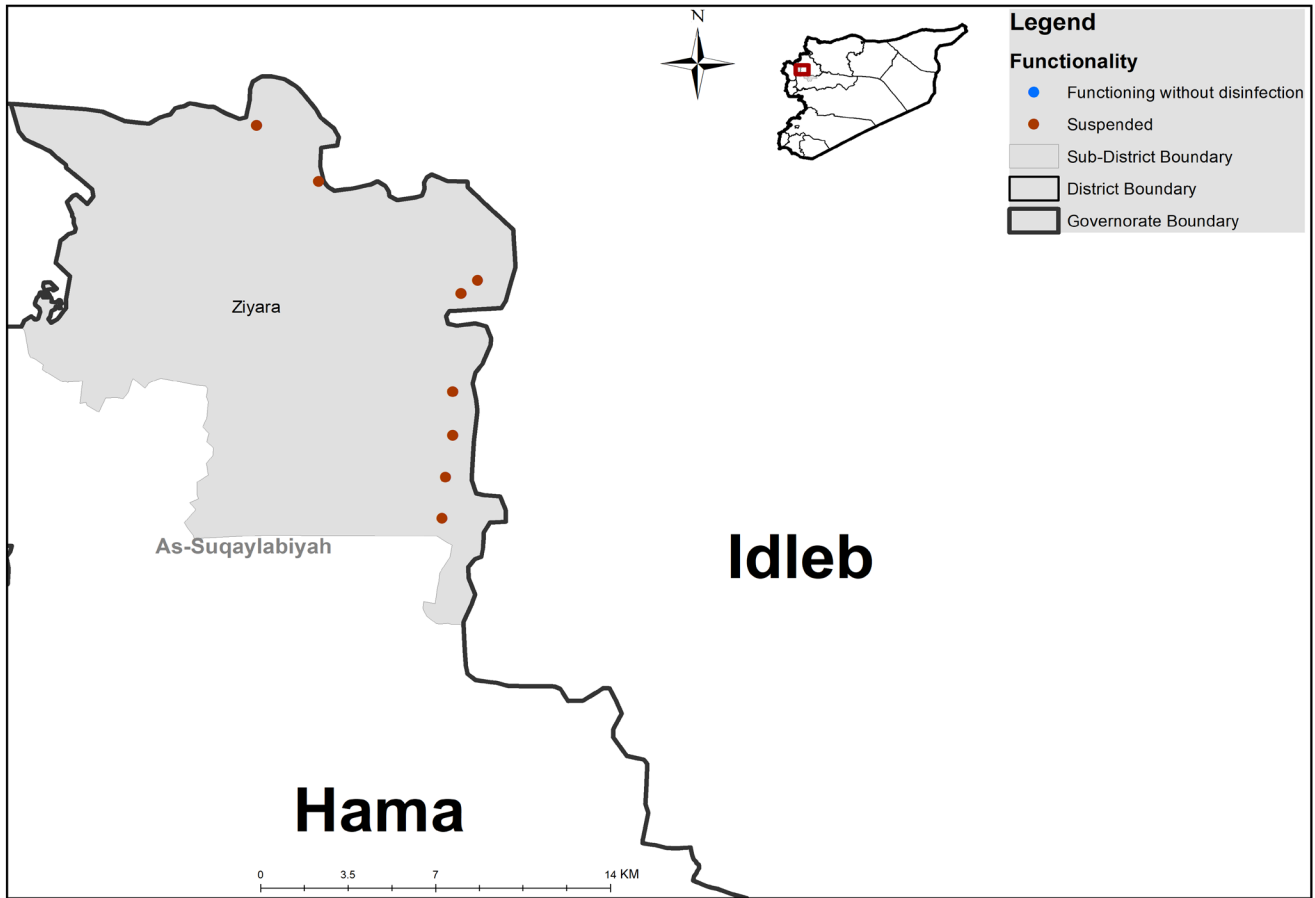
## Drinking Water Stations Distribution in Idleb (Communities Water Stations)



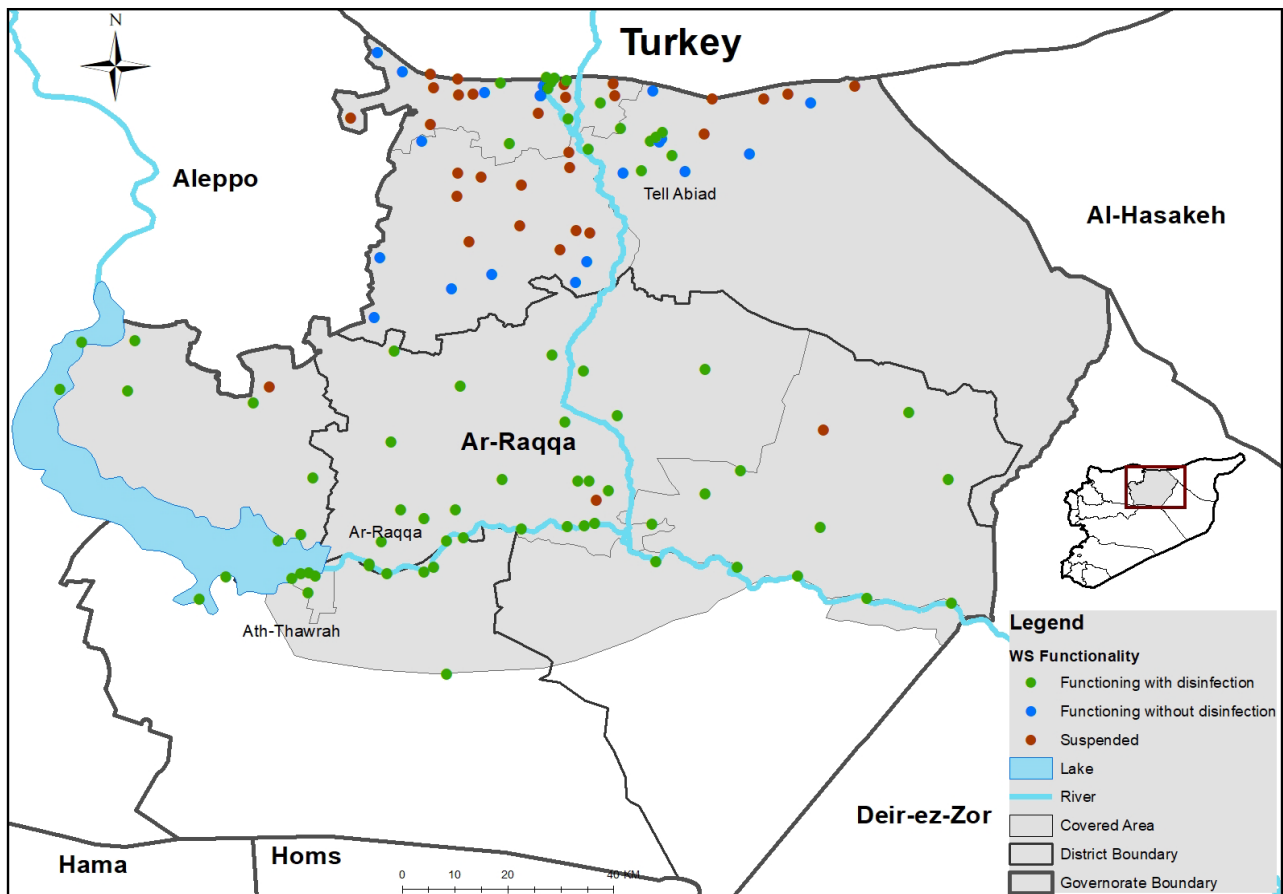
## Drinking Water Stations Distribution in Idleb (Camps Water Stations)



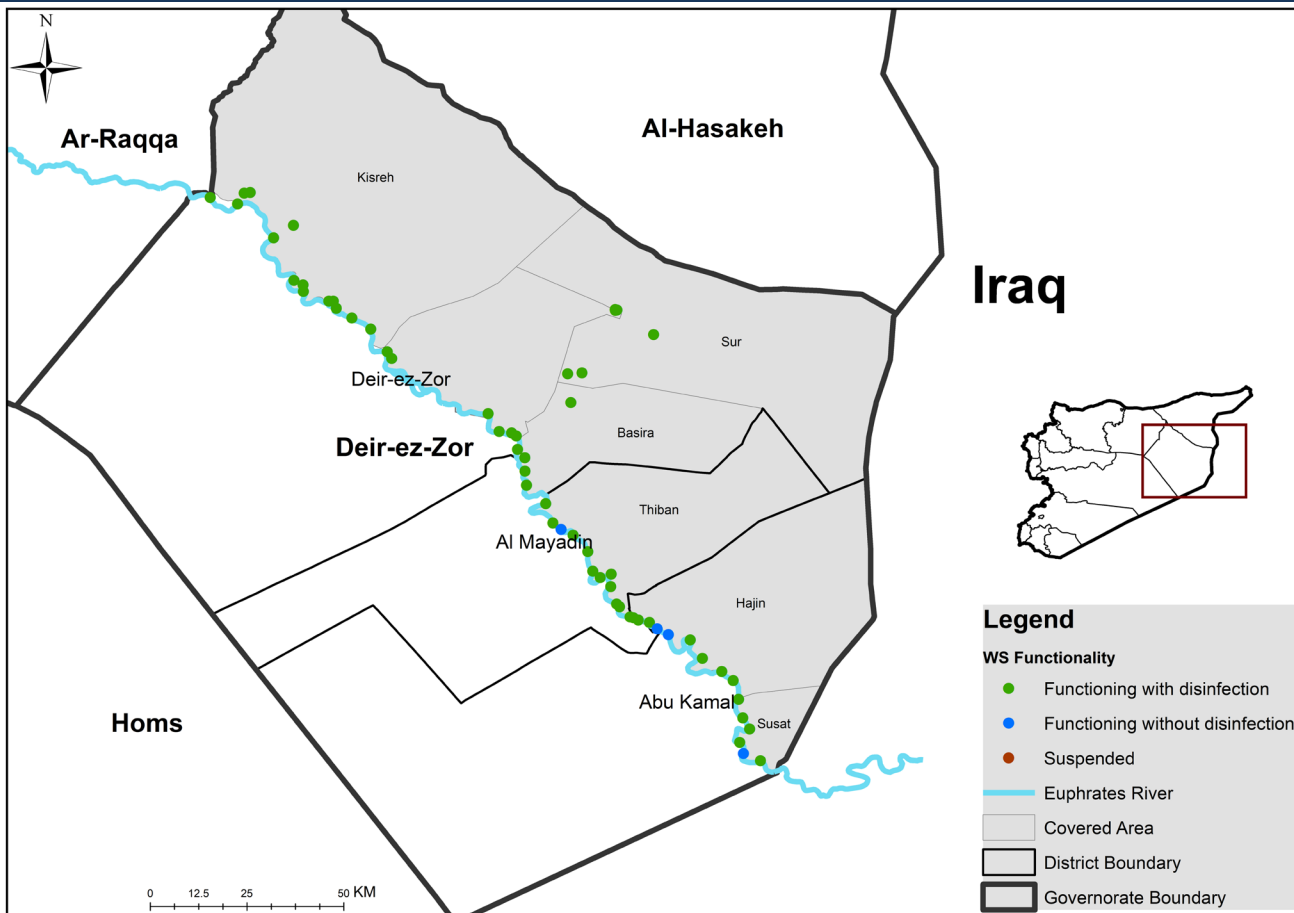
## Drinking Water Stations Distribution in Hama



## Drinking Water Stations Distribution in Ar-raqqa



## Drinking Water Stations Distribution in Deir-ez-Zor



## Drinking Water Stations Distribution in Al-Hasakeh

